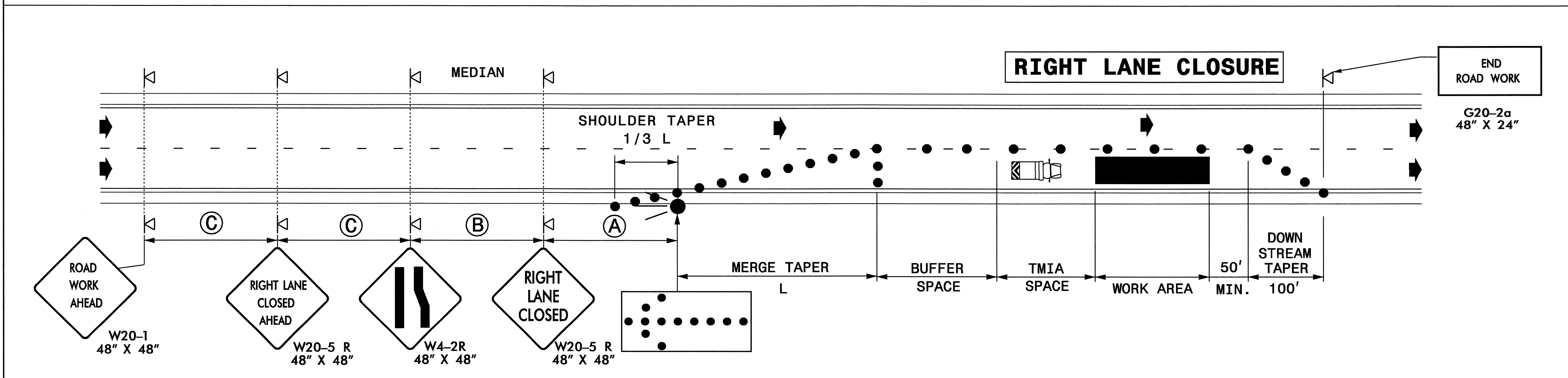
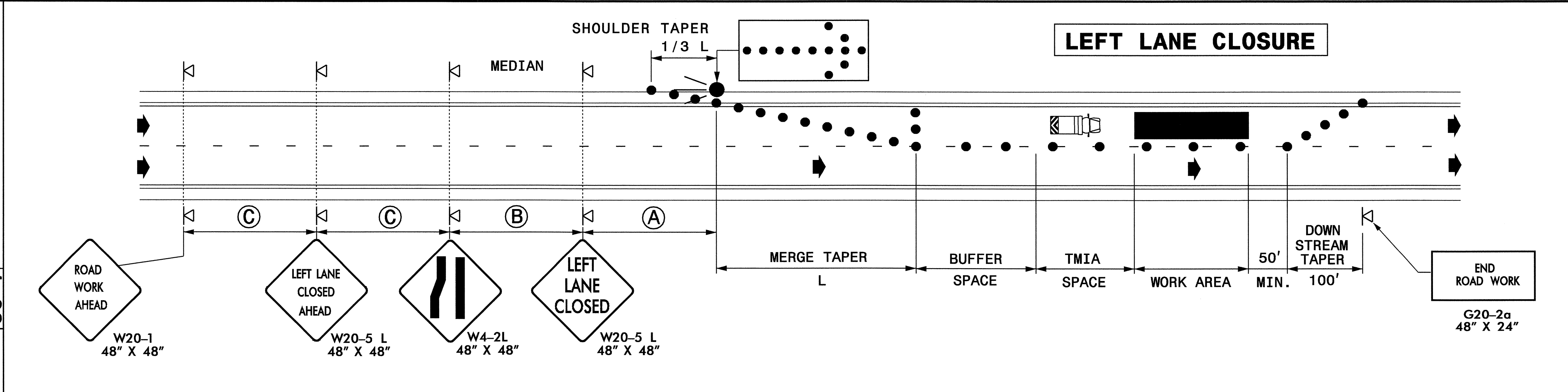


STATE OF NORTH CAROLINA
DEPT. OF TRANSPORTATION
DIVISION OF HIGHWAYS
RALEIGH, N.C.

ENGLISH STANDARD DRAWING FOR
TEMPORARY LANE CLOSURES
DIVIDED MULTI-LANE ROADWAY-1 LANE CLOSED

SHEET 3 OF 7
1101.02



GENERAL NOTES

- IF NECESSARY USE THIS STD FOR ONE-WAY CITY TYPE STREETS WHERE SIGNS MAY BE MOUNTED ON BOTH SIDES OF THE ROADWAY.
- PLACE ARROW PANELS ON THE SHOULDER (PAVED OR UNPAVED). PLACE ARROW PANELS WITHIN THE TAPER IF SHOULDERS DO NOT EXIST. MEET THE REQUIREMENTS FOR STOPPING SIGHT DISTANCE AT THE LOCATION OF THE ARROW PANEL. IF NEEDED, EXTEND LANE CLOSURES AT THE BUFFER SPACE, SUCH THAT STOPPING SIGHT DISTANCE TO THE ARROW PANEL IS MET. (SEE STD. 1101.11 -SHEET 2)
- PLACE DRUMS IN TAPERS AT THE MAXIMUM SPACING EQUAL IN FEET TO THE POSTED SPEED LIMIT. PLACE DRUMS ALONG THE BUFFER SPACE AND WORK AREA AT THE MAXIMUM SPACING EQUAL IN FEET TO 2 TIMES THE POSTED SPEED LIMIT.
- REFER TO STD. 1101.11 -SHEETS 1 & 4, FOR "L" DISTANCE AND SIGN SPACING.
- REFER TO SHEETS 6 AND 7 FOR TREATMENT OF LANE CLOSURES THRU INTERCHANGES.
- PORTRAY A SPEED 10 MPH LESS THAN THE POSTED SPEED LIMIT ON ADVISORY SPEED PANELS (XX MPH, SIGN W13-1), UNLESS A LOWER SPEED IS DETERMINED NECESSARY BY THE ENGINEER.
- INSTALL LANE CLOSURES WITH THE TRAFFIC FLOW, BEGINNING WITH DEVICES ON THE UPSTREAM SIDE OF TRAFFIC. REMOVE LANE CLOSURES AGAINST THE TRAFFIC FLOW, BEGINNING WITH DEVICES ON THE DOWNSTREAM SIDE OF TRAFFIC.
- TMIA'S ARE REQUIRED ONLY WHEN A BUFFER SPACE CANNOT BE ATTAINED, OR WHEN DIRECTED BY THE ENGINEER OR THE PLANS. WHEN USED, POSITION THE TMIA TO MAINTAIN A ROLL-AHEAD DISTANCE AS RECOMMENDED BY THEIR MANUFACTURER.

LEGEND

	FLASHING ARROW PANEL (TYPE C)
	TRUCK MOUNTED IMPACT ATTENUATOR(TMIA)
	DRUM
	PORTABLE SIGN
	TYPE B WARNING LIGHT (FOR NIGHT USE)
	DIRECTION OF TRAFFIC FLOW

STATE OF NORTH CAROLINA
DEPT. OF TRANSPORTATION
DIVISION OF HIGHWAYS
RALEIGH, N.C.

ENGLISH STANDARD DRAWING FOR
TEMPORARY LANE CLOSURES
DIVIDED MULTI-LANE ROADWAY-1 LANE CLOSED

SHEET 3 OF 7
1101.02

03-JAN-2005 11:06
\\ehs-cctf50\N\4404\TCP\NR-4404-TCP.dgn
scatton AT TETCB2274

APPROVED: *Betsy L. Watson* DATE: 1-3-05

TEMPORARY LANE CLOSURES

SCALE: NONE
DATE: 12/16/04
DWG. BY: SPC
DESIGN BY: SPC
REVIEWED BY: BLW

SEAL:

REVISIONS

CADD FILE