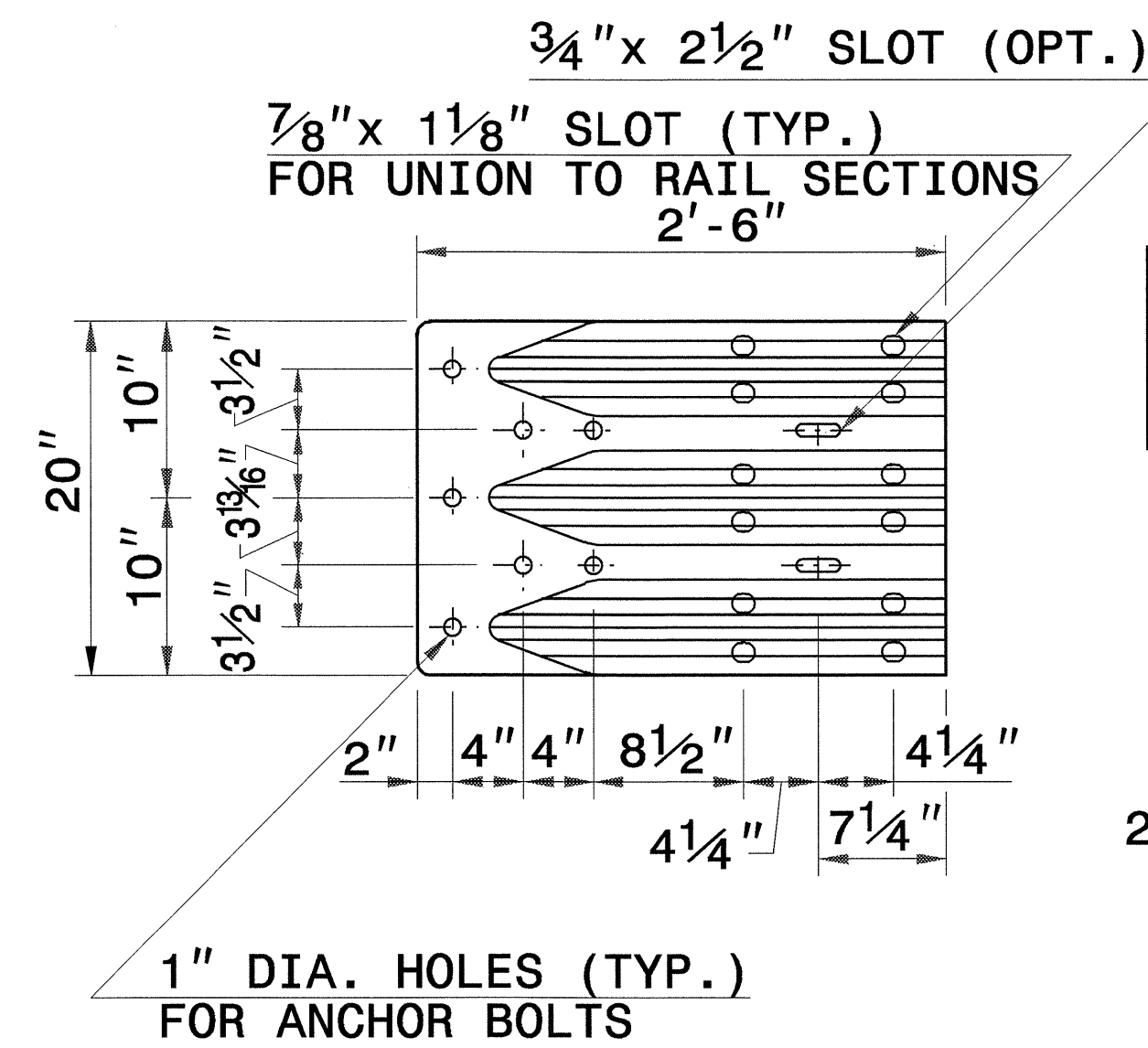
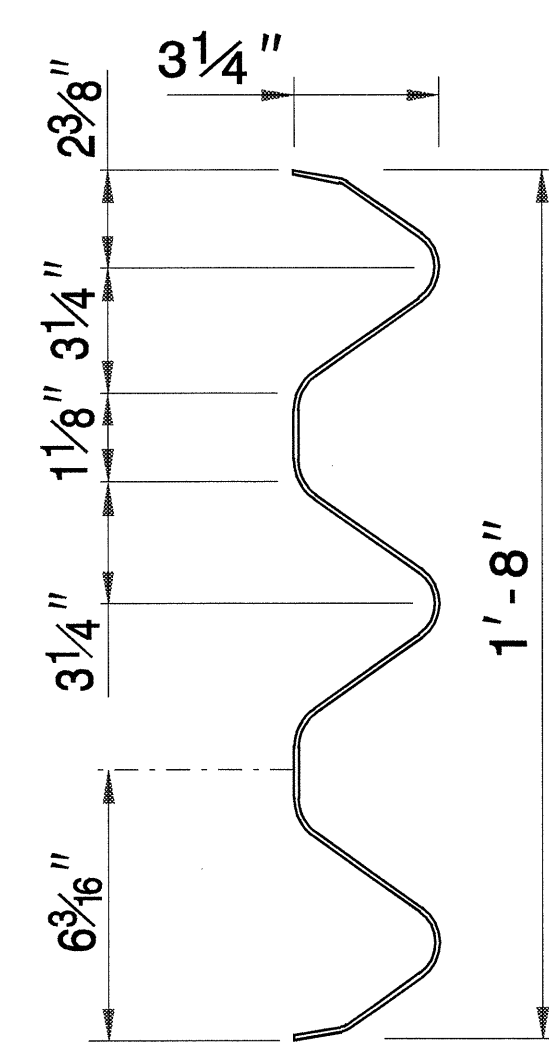
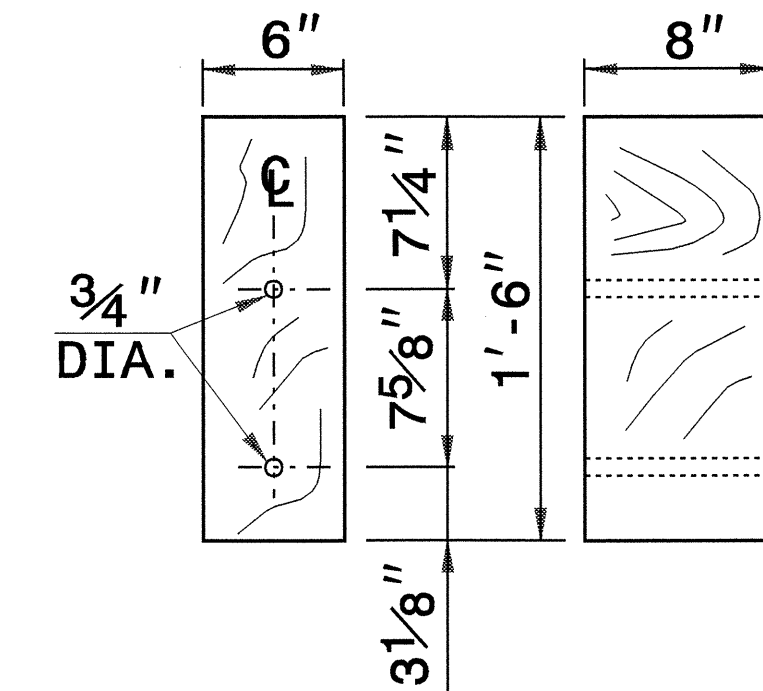
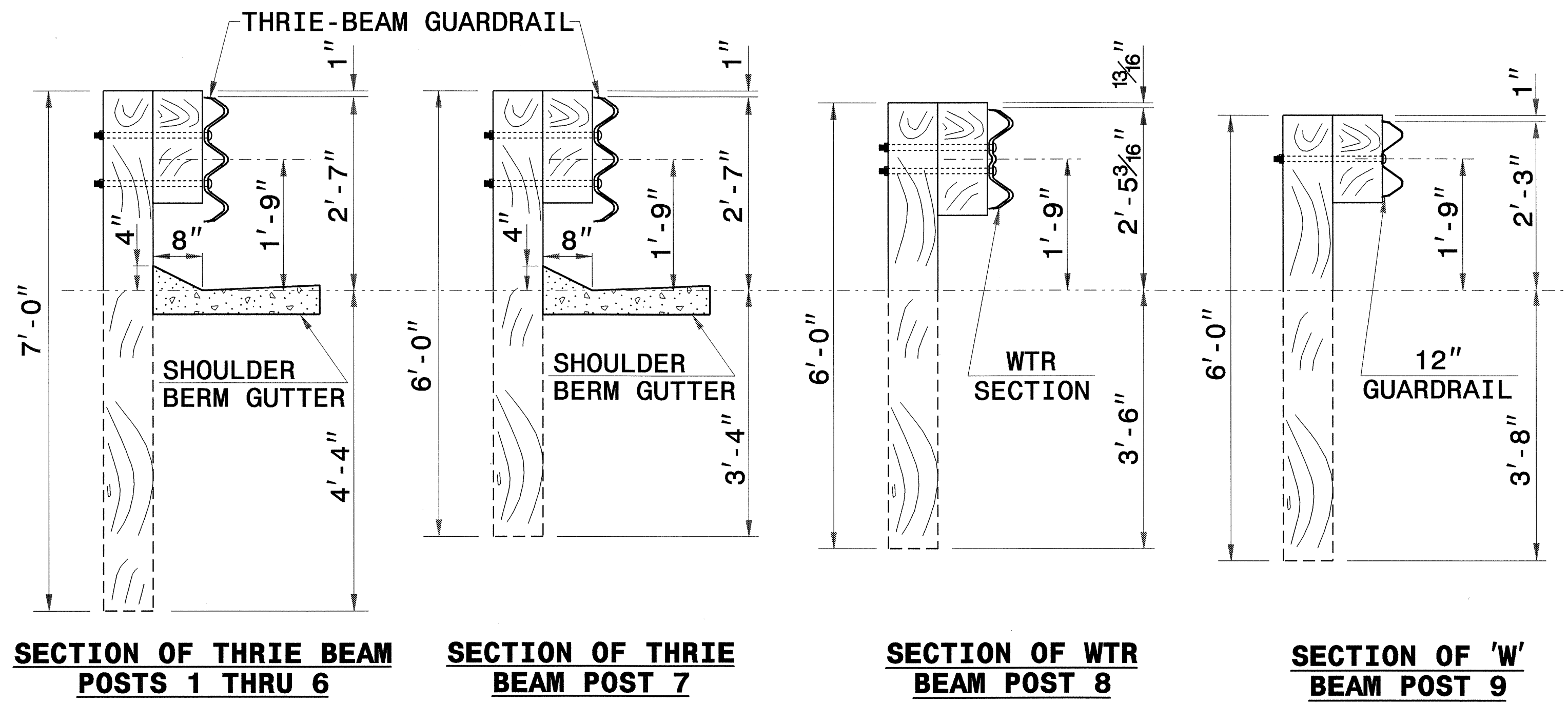


5/14/99

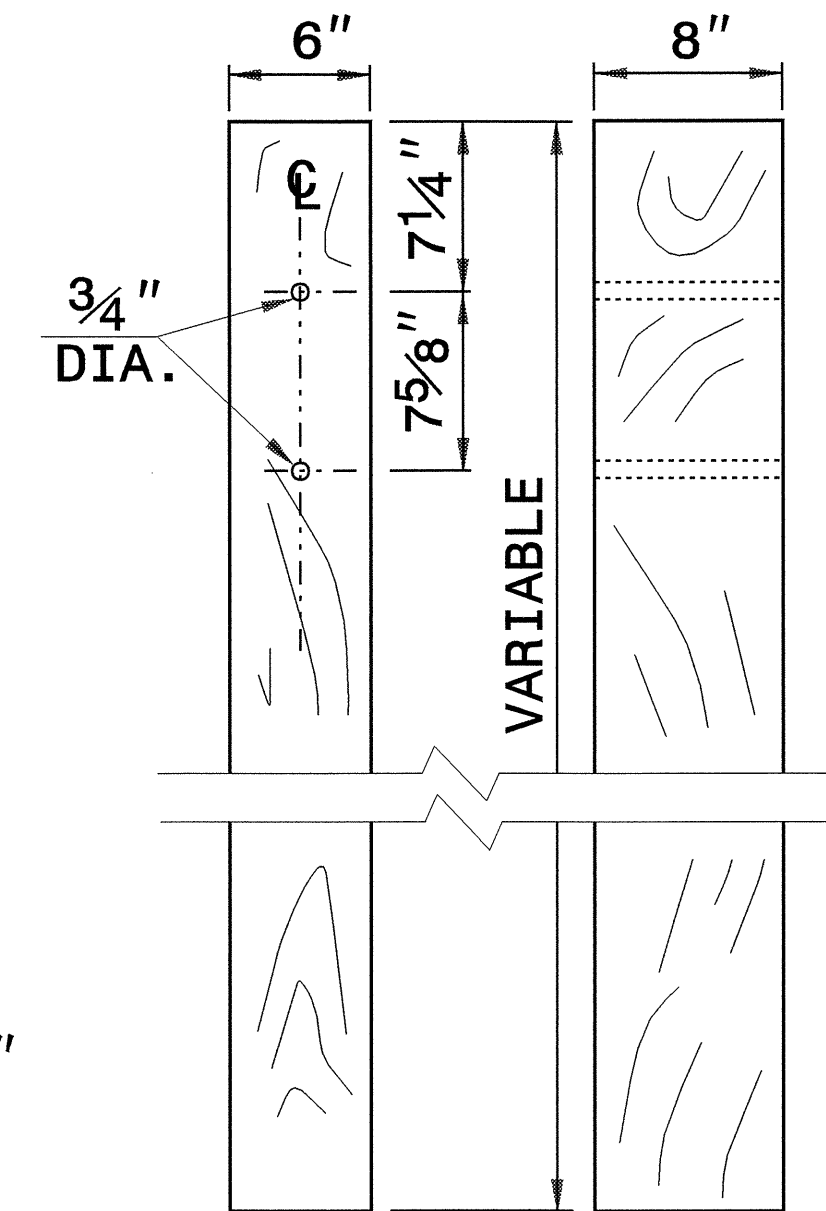
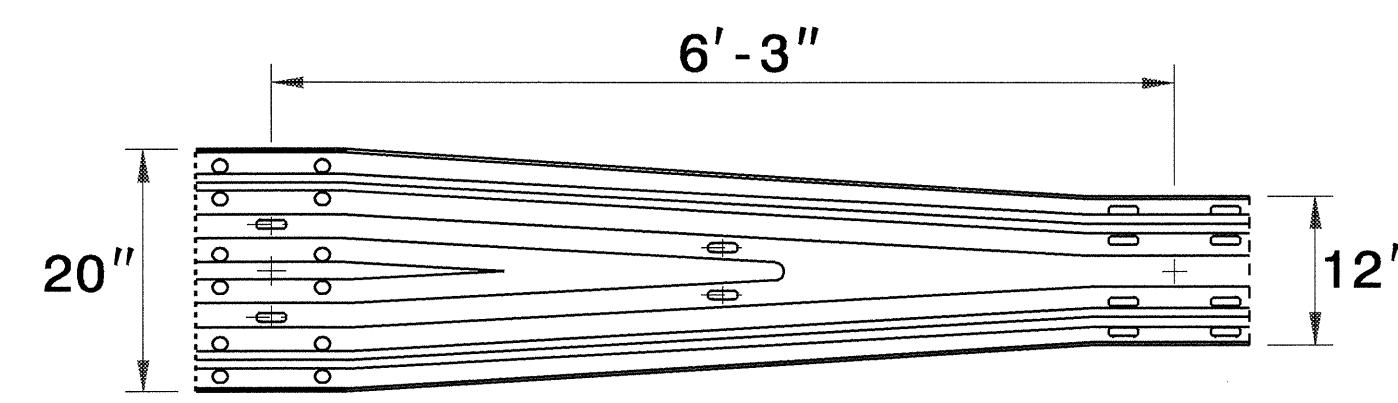
STATE OF  
NORTH CAROLINA  
DEPT. OF TRANSPORTATION  
DIVISION OF HIGHWAYS  
RALEIGH, N.C.

ENGLISH DETAIL DRAWING FOR  
**STRUCTURE ANCHOR UNITS**

SHEET OF



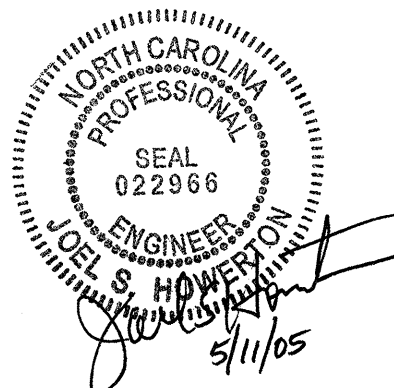
NOTE: THE THRIE BEAM RAIL WTR SECTION WILL REQUIRE SPECIAL OFFSET BLOCK AND LINE POST.



STATE OF  
NORTH CAROLINA  
DEPT. OF TRANSPORTATION  
DIVISION OF HIGHWAYS  
RALEIGH, N.C.

ENGLISH DETAIL DRAWING FOR  
**STRUCTURE ANCHOR UNITS**

SHEET OF



DESIGN SERVICES UNIT  
STANDARDS AND SPECIAL DESIGN  
Office 919-250-4128 FAX 919-250-4119

**DETAIL OF GUARDRAIL ANCHOR UNIT TYPE BP III**

ORIGINAL BY: C.O. CUEVAS DATE: 12-00  
 MODIFIED BY: nbritt DATE: 02-18-04  
 CHECKED BY: C.O. CUEVAS DATE: 2/19/04  
 FILE SPEC.: details/nbritt/english/r4404gdrailanchorbp.dgn