

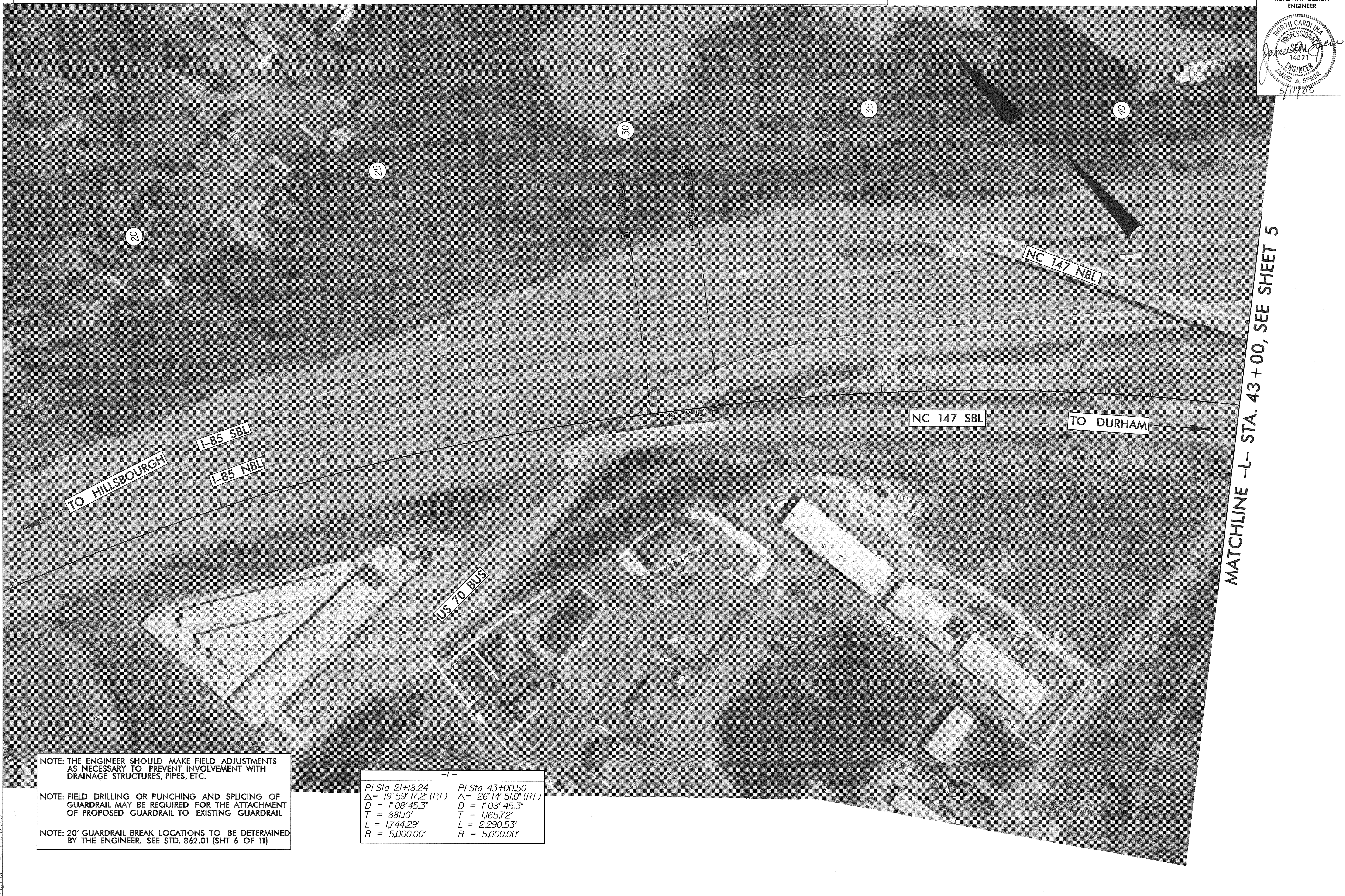
5/14/99

# SEGMENT A: NC 147 FROM I-85 TO TW ALEXANDER DRIVE SOUTH OF I-40

|                                 |                |
|---------------------------------|----------------|
| PROJECT REFERENCE NO.<br>R-4404 | SHEET NO.<br>4 |
| RW SHEET NO.                    |                |

ROADWAY DESIGN  
ENGINEER

NORTH CAROLINA  
PROFESSIONAL  
ENGINEER  
SEAL  
14571  
5/11/05



MATCHLINE -L- STA. 43 + 00, SEE SHEET 5

NOTE: THE ENGINEER SHOULD MAKE FIELD ADJUSTMENTS AS NECESSARY TO PREVENT INVOLVEMENT WITH DRAINAGE STRUCTURES, PIPES, ETC.

NOTE: FIELD DRILLING OR PUNCHING AND SPLICING OF GUARDRAIL MAY BE REQUIRED FOR THE ATTACHMENT OF PROPOSED GUARDRAIL TO EXISTING GUARDRAIL

NOTE: 20' GUARDRAIL BREAK LOCATIONS TO BE DETERMINED BY THE ENGINEER. SEE STD. 862.01 (SHT 6 OF 11)

| -L-                                  |                                      |
|--------------------------------------|--------------------------------------|
| PI Sta 21+18.24                      | PI Sta 43+00.50                      |
| $\Delta = 19^{\circ} 59' 17.2" (RT)$ | $\Delta = 26^{\circ} 14' 51.0" (RT)$ |
| $D = 1' 08' 45.3"$                   | $D = 1' 08' 45.3"$                   |
| $T = 881.10'$                        | $T = 1,165.72'$                      |
| $L = 1,744.29'$                      | $L = 2,290.53'$                      |
| $R = 5,000.00'$                      | $R = 5,000.00'$                      |

R:\AN-2005\08:00\_R4404\rdy\_psh4.dgn  
EADouglas