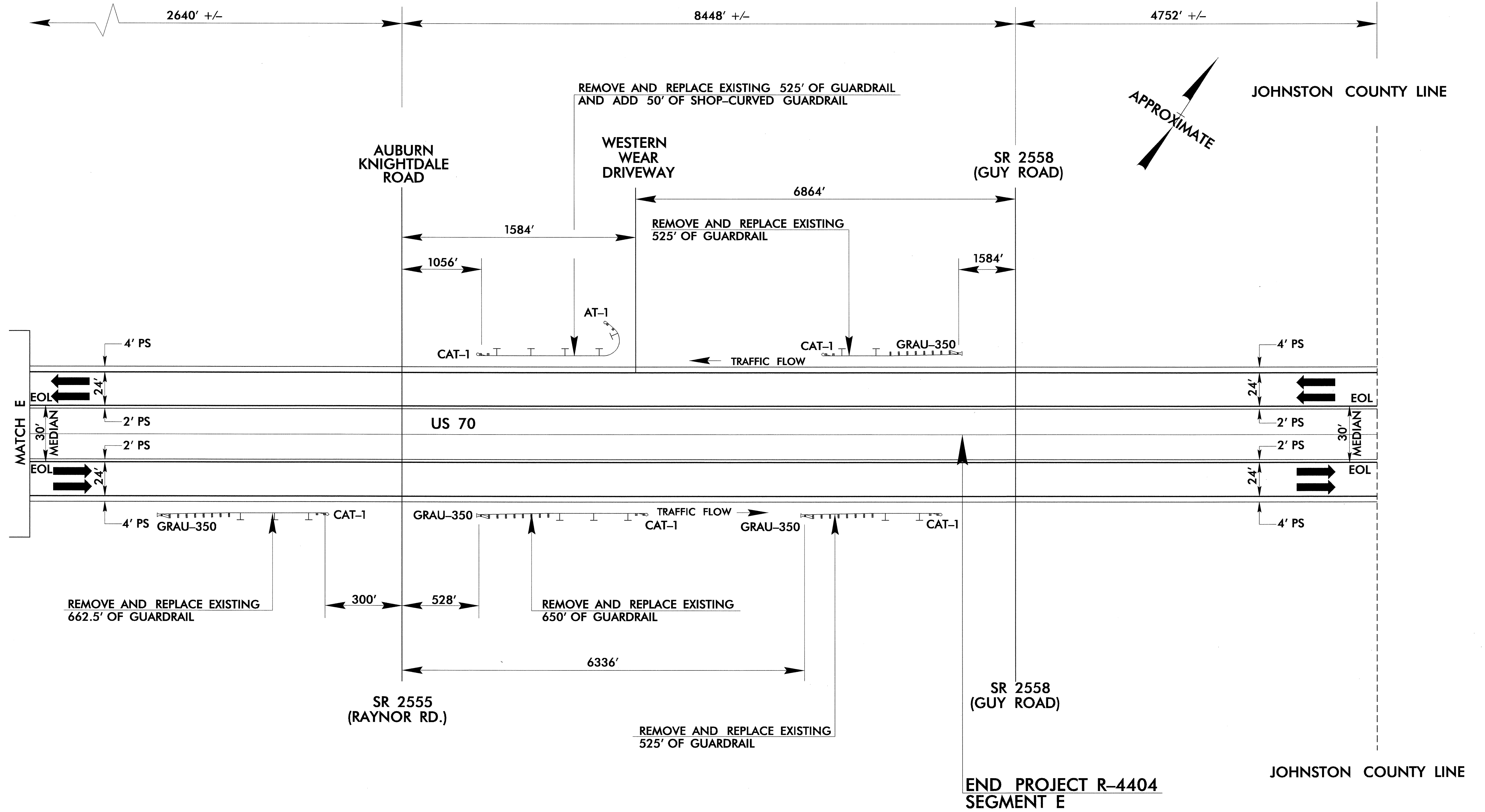


SEGMENT E: US 70 (VANDORA SPRINGS ROAD INTERCHANGE TO JOHNSTON COUNTY LINE)

PROJECT REFERENCE NO. R-4404	SHEET NO. 41
RW SHEET NO.	



NOTE: THE ENGINEER SHOULD MAKE FIELD ADJUSTMENTS AS NECESSARY TO PREVENT INVOLVEMENT WITH DRAINAGE STRUCTURES, PIPES, ETC.

NOTE: FIELD DRILLING OR PUNCHING AND SPLICING OF GUARDRAIL MAY BE REQUIRED FOR THE ATTACHMENT OF PROPOSED GUARDRAIL TO EXISTING GUARDRAIL

NOT TO SCALE

5/14/99
18 MAR 2005 09:14 R4404.RDY_DSIN2.DGN
DWG Gardner