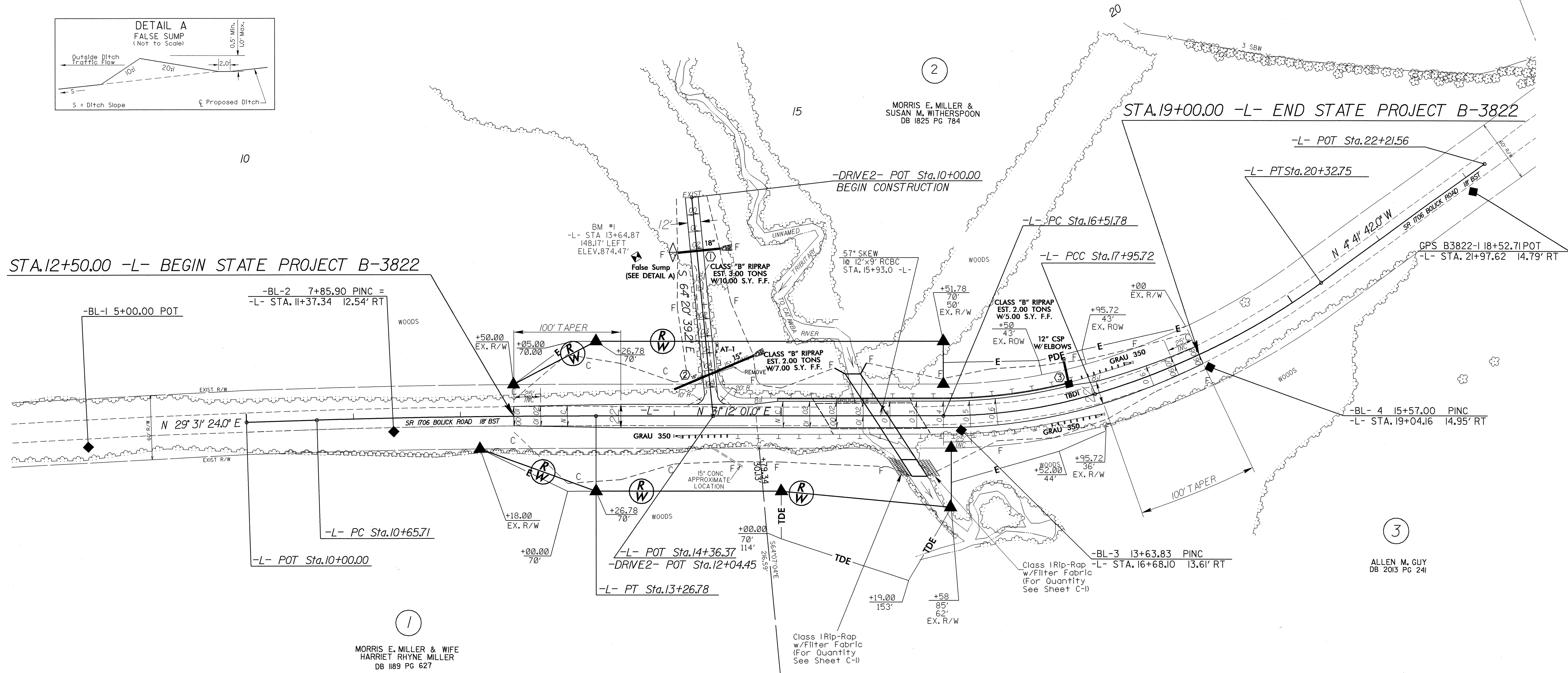
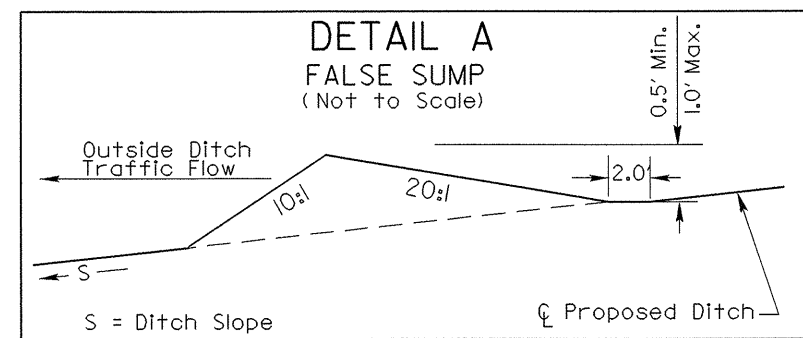


DESIGN EXCEPTION REQUIRED FOR THE DESIGN SPEED FROM 60 MPH TO 30 MPH.

DATUM DESCRIPTION

THE LOCALIZED COORDINATE SYSTEM DEVELOPED FOR THIS PROJECT IS BASED ON THE STATE PLANE COORDINATES ESTABLISHED BY NCDOT FOR MONUMENT "B3822-1"
 WITH NAD 1983/95 STATE PLANE GRID COORDINATES OF NORTHING: 742168.0892(1) EASTING: 1370626.264(1)
 THE AVERAGE COMBINED GRID FACTOR USED ON THIS PROJECT (GROUND TO GRID) IS: 0.99985619
 THE N.C. LAMBERT GRID BEARING AND LOCALIZED HORIZONTAL GROUND DISTANCE FROM "B3822-1" TO -L- STATION 10+00.00 IS S 20° 34' 56.88" W AND 1167.57'
 ALL LINEAR DIMENSIONS ARE LOCALIZED HORIZONTAL DISTANCES
 VERTICAL DATUM USED IS NAVD 88

PI Sta 11+96.26	PI Sta 17+24.25	PI Sta 19+15.38
$\Delta = 1' 40' 37.0"$ (RT)	$\Delta = 16' 29' 39.0"$ (LT)	$\Delta = 19' 24' 04.0"$ (LT)
$D = 0' 38' 32.4"$	$D = 11' 27' 33.0"$	$D = 8' 11' 06.4"$
$L = 261.07'$	$L = 143.94'$	$L = 237.03'$
$T = 130.55'$	$T = 72.47'$	$T = 119.66'$
$R = 8,920.00'$	$R = 500.00'$	$R = 700.00'$
$RO = 150'$	$RO = 150'$	$RO = 150'$
$SE = NC$	$SE = 06$	$SE = 06$
	$V = 40$ MPH	$V = 46$ MPH



SHOULDER BERM GUTTER
 -L- STA. 14+97.00 TO 17+74.00 LT.

- NOTES
1. FOR -L- & -DRIVE2- PROFILES, SEE SHEET 5
 2. FOR CULVERT PLANS, SEE SHEETS C-1 THRU C-4

REVISIONS

8/17/99

17-JUN-2005 15:09
 4444444444444444