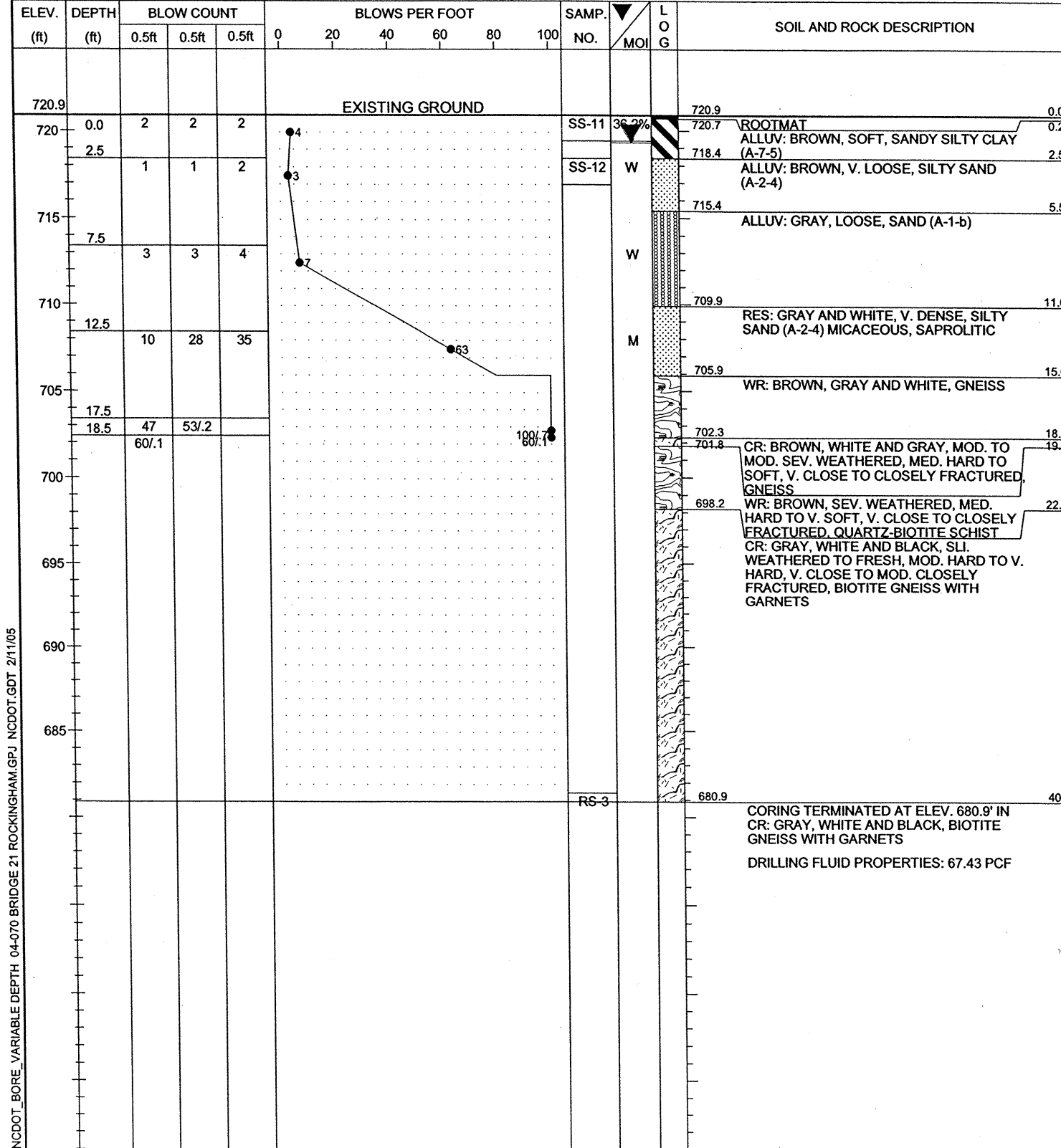


2736 ROWLAND ROAD
 RALEIGH, NORTH CAROLINA 27615
 Phone (919) 871-0800 Fax (919) 871-0803

N.C.D.O.T. GEOTECHNICAL UNIT
 BORING LOG

SHEET 1 OF 1

PROJECT NO. 33335.1.1	ID. B-3899	COUNTY ROCKINGHAM	GEOLOGIST C. BRUINSMA
SITE DESCRIPTION BRIDGE #21 ON SR 1001 (WOOLEN STORE RD.) OVER TROUBLESOME CREEK			GROUND WATER (ft)
BORING NO. B2B	BORING LOCATION 24+40	OFFSET 10' RT.	ALIGNMENT -L-
COLLAR ELEV. 720.9 ft	NORTHING 929,193.5	EASTING 1,770,697.5	0 HR. 1.6
TOTAL DEPTH 40.0 ft	DRILL MACHINE D-50	DRILL METHOD MUD ROTARY	HAMMER TYPE AUTO
DATE STARTED 1-05-05	COMPLETED 1-05-05	SURFACE WATER DEPTH N/A	



CORE BORING REPORT

DATE: 1/05/05

PROJECT: 33335.1.1 I.D. NO.: B-3899 BORING NO: B2B GEOLOGIST: C. BRUINSMA

DESCRIPTION: BRIDGE #21 ON SR 1001 (WOOLEN STORE RD.) OVER TROUBLESOME CREEK

COUNTY: ROCKINGHAM COLLAR ELEV.: 720.9 FT TOTAL DEPTH: 40.0 FT

ELEV. (FT)	DEPTH (FT)	DRILL RATE MIN/FT	RUN (FT)	REC FT %	RQD FT %	SAMP #	FIELD CLASSIFICATION AND REMARKS
702.3	18.6	0:30	1.4	1.4/1.4	0.3/1.4		18.6-19.1 CR: BROWN, WHITE AND GRAY, MOD. TO MOD. SEV. WEATHERED, MED. HARD TO SOFT, V. CLOSE TO CLOSELY FRACTURED, GNEISS
		0:30/4		100%	21.4%		STRATA REC = 100% STRATA RQD = 60%
700.9	20.0		5.0	4.0/5.0	1.9/5.0		19.1-22.7 WR: BROWN, SEV. WEATHERED, MED. HARD TO V. SOFT, V. CLOSE TO CLOSELY FRACTURED, QUARTZ-BIOTITE SCHIST
700.9	20.0	1:40		80%	38%		STRATA REC = 72% STRATA RQD = N/A
		1:30					
695.9	25.0	3:00	5.0	4.9/5.0	4.7/5.0		22.7-40.0 CR: GRAY, WHITE AND BLACK, SLI. WEATHERED TO FRESH, MOD. HARD TO V. HARD, V. CLOSE TO MOD. CLOSELY FRACTURED, BIOTITE GNEISS WITH GARNETS
695.9	25.0	1:50		98%	94%		
		2:00					
690.9	30.0	2:30	5.0	5.0/5.0	4.5/5.0		
690.9	30.0	3:15		100%	90%		
		3:20					
685.9	35.0	3:15	5.0	5.0/5.0	4.9/5.0	RS-3	
685.9	35.0	1:10		100%	98%		
		2:45					
680.9	40.0	2:30					STRATA REC = 99% STRATA RQD = 88%

CORING TERMINATED AT 40.0 FT
 ELEVATION: 680.9 FT

DRILLER: I.CRUZ CORE SIZE: HQ EQUIPMENT: D-50 TRACK

NCDOT_BORE_VARIABLE DEPTH 04-070 BRIDGE 21 ROCKINGHAM.GPJ NCDOT.GDT 2/11/05