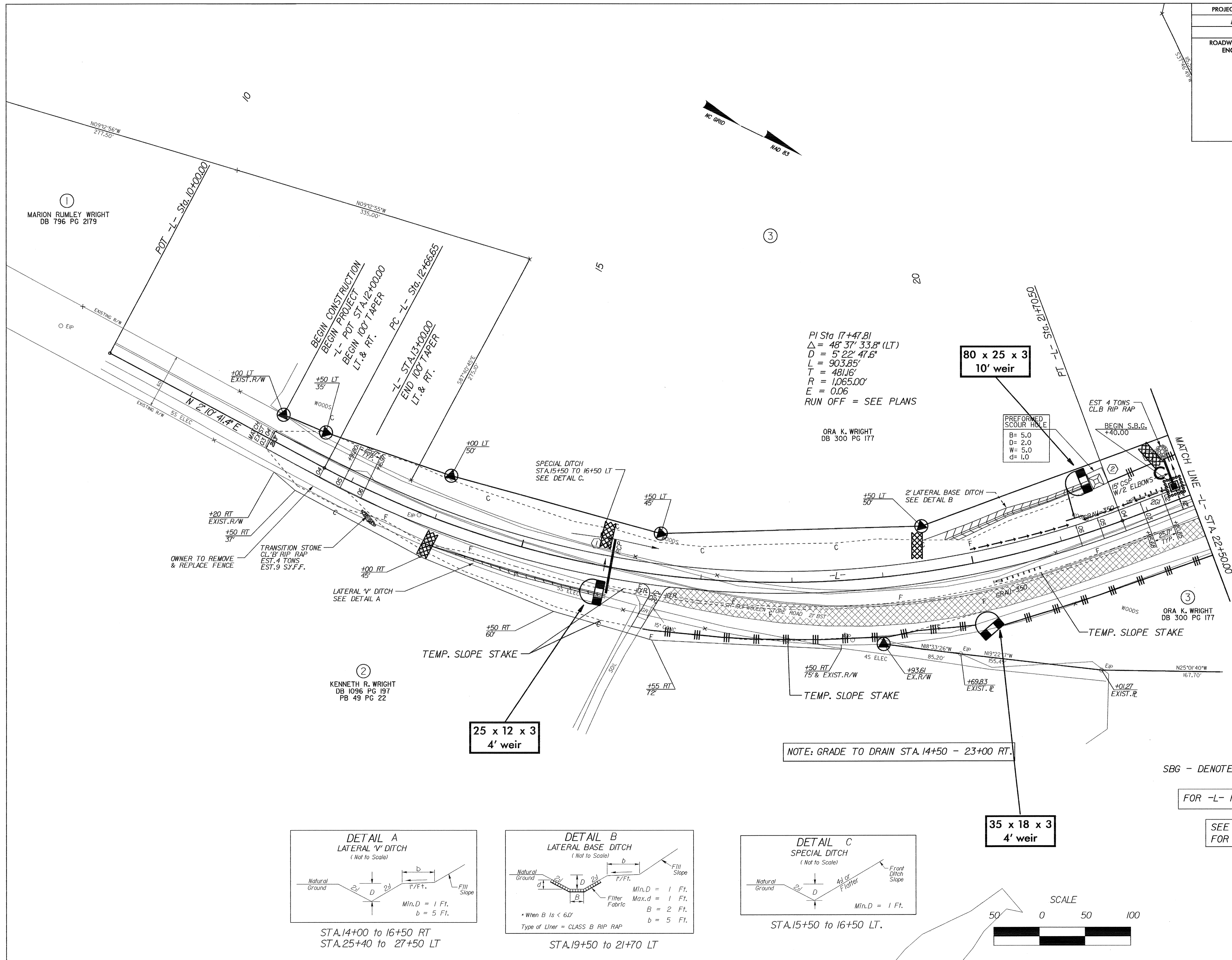


PROJECT REFERENCE NO.	SHEET NO.
B-3899	EC-6/CONST.4
RW SHEET NO.	
ROADWAY DESIGN ENGINEER	HYDRAULICS ENGINEER



PI Sta. 17+47.81  
 $\Delta = 48^{\circ} 37' 33.8''$  (LT)  
 $D = 5' 22'' 47.6''$   
 $L = 903.85'$   
 $T = 481.16'$   
 $R = 1,065.00'$   
 $E = 0.06$   
 RUN OFF = SEE PLANS

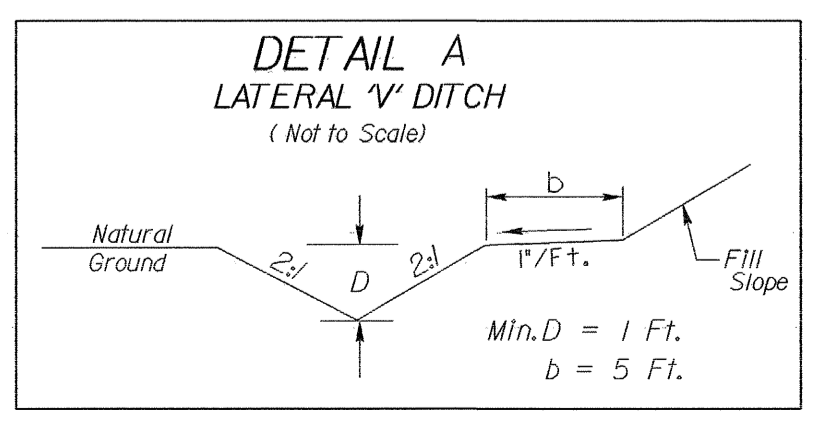
ORA K. WRIGHT  
DB 300 PG 177

②  
 KENNETH R. WRIGHT  
 DB 1096 PG 197  
 PB 49 PG 22

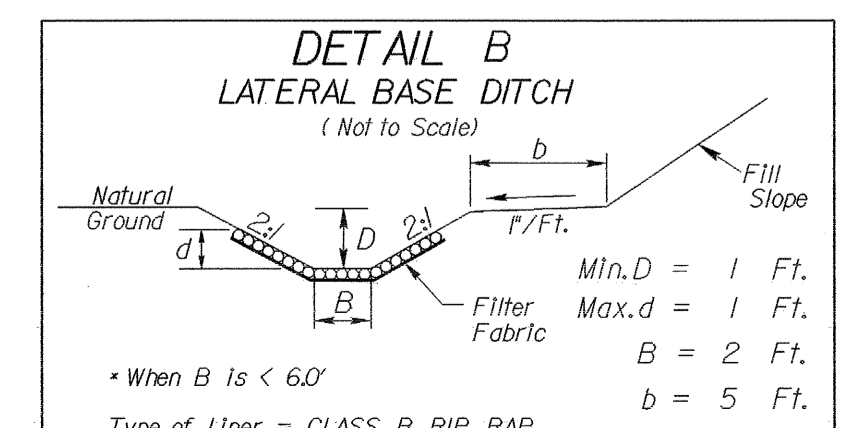
SBG - DENOTES SHOULDER BERM GUTTER

FOR -L- PROFILE SEE SHEET NO. 6

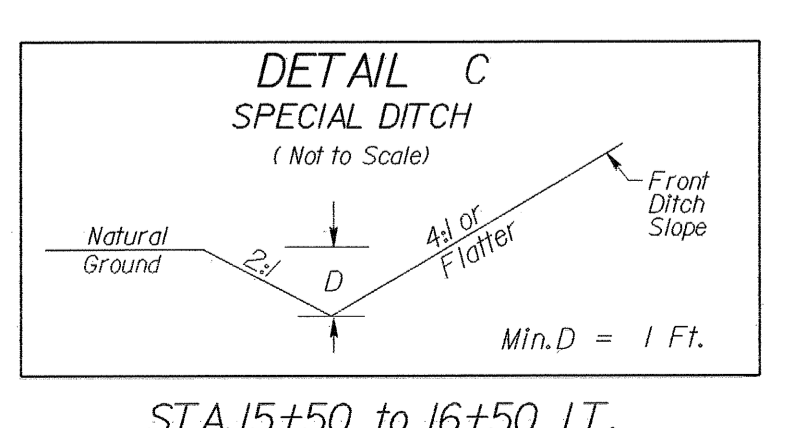
SEE SHEETS S-1THRU S-  
FOR STRUCTURE PLANS



STA. 14+00 to 16+50 RT  
STA. 25+40 to 27+50 LT



STA. 19+50 to 21+70 LT



STA. 15+50 to 16+50 LT.

35 x 18 x 3  
4' weir

NOTE: GRADE TO DRAIN STA. 14+50 - 23+00 RT.

