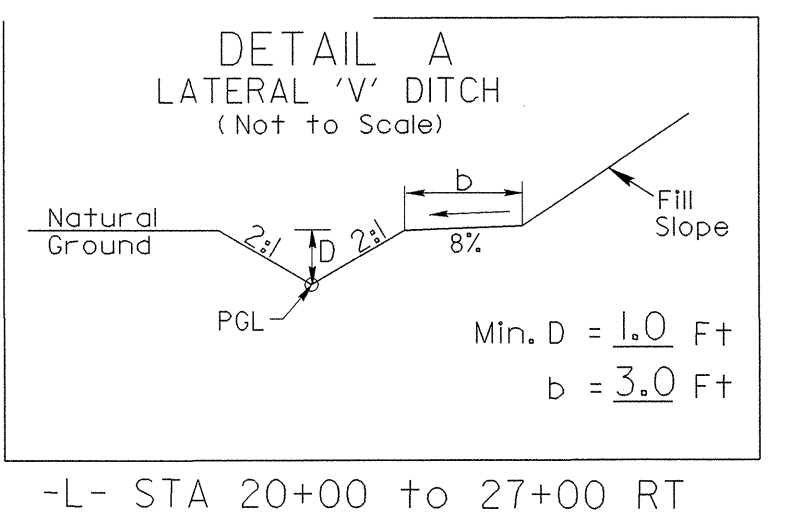
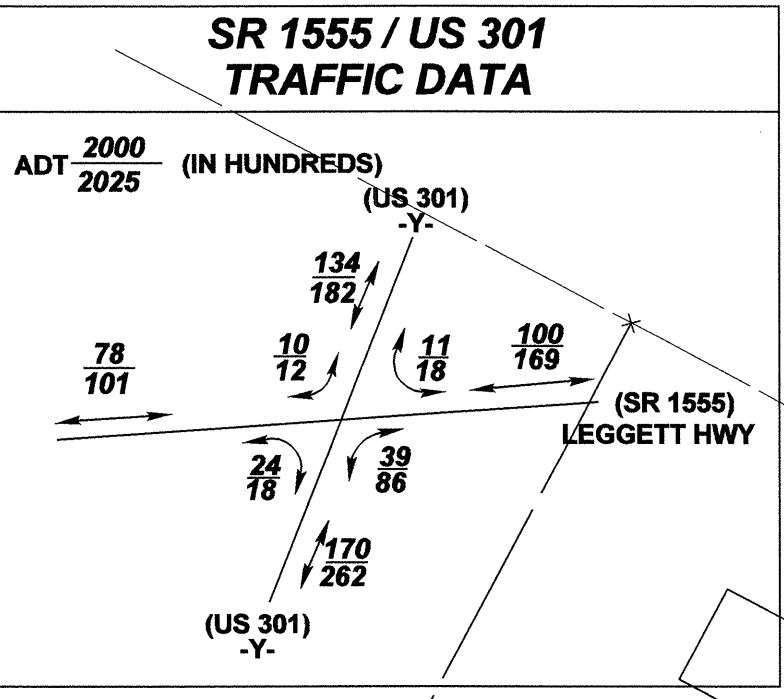


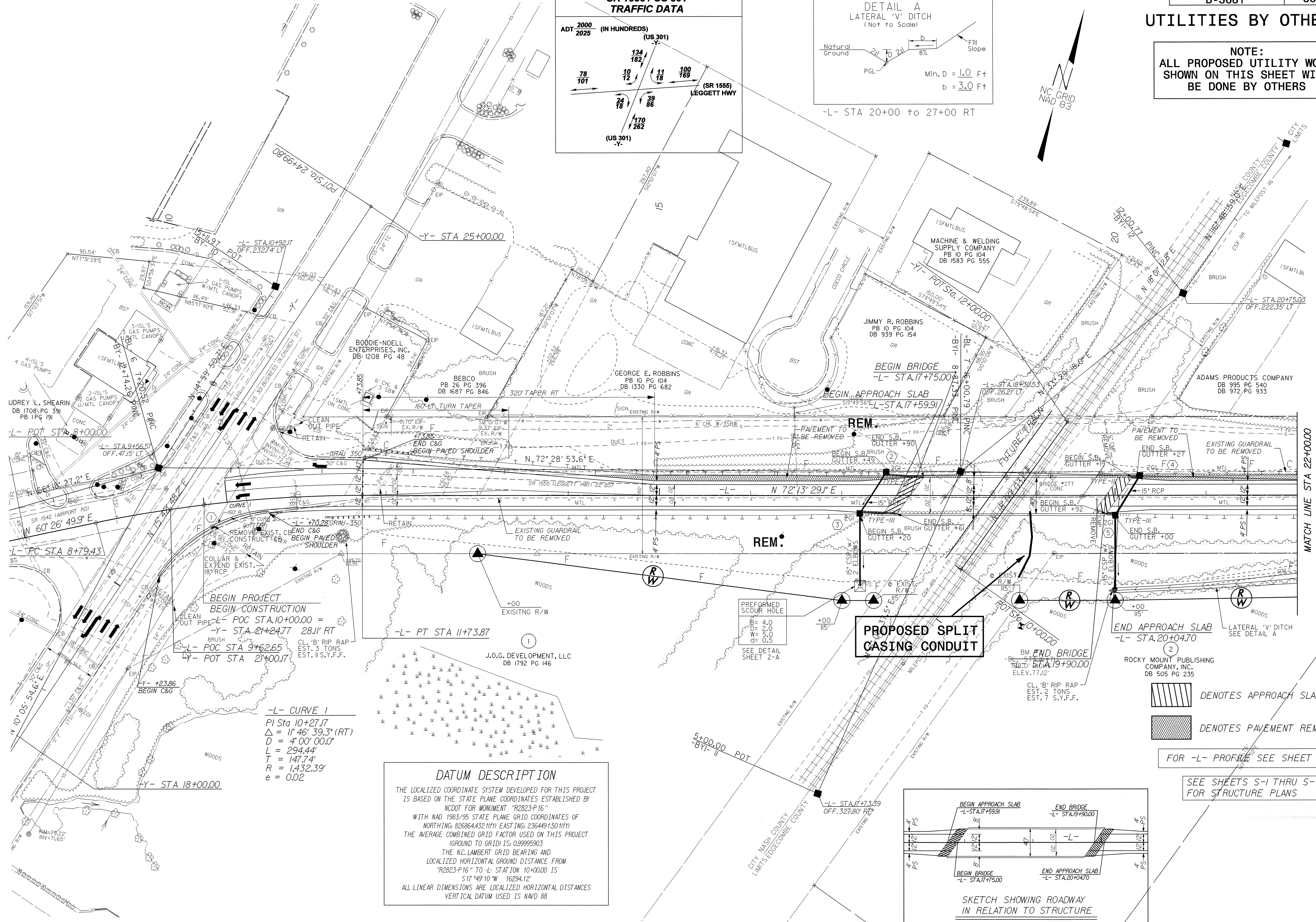
UTILITIES BY OTHERS

NOTE:  
ALL PROPOSED UTILITY WORK  
SHOWN ON THIS SHEET WILL  
BE DONE BY OTHERS



REVISIONS

10/26/08



BEGIN PROJECT  
BEGIN CONSTRUCTION  
L- POC STA 10+00.00 =  
Y- STA 21+24.77 28.11' RT  
L- POC STA 9+62.65  
Y- POT STA 21+00.17

-L- CURVE 1  
PI Sta 10+27.17  
Δ = 11° 46' 39.3" (RT)  
D = 4' 00' 00.0"  
L = 294.44'  
T = 147.74'  
R = 1,432.33'  
e = 0.02

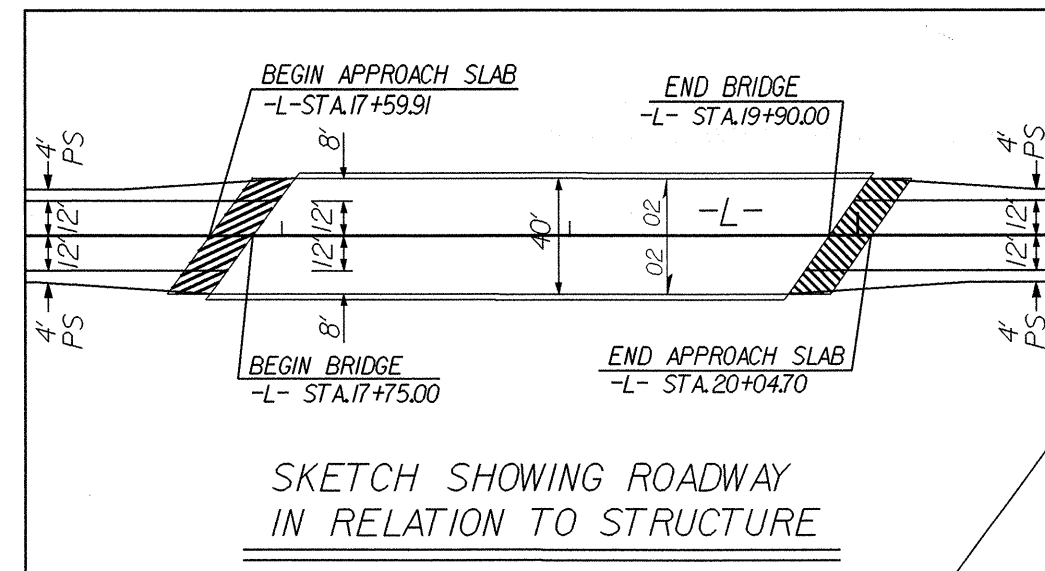
**DATUM DESCRIPTION**  
THE LOCALIZED COORDINATE SYSTEM DEVELOPED FOR THIS PROJECT IS BASED ON THE STATE PLANE COORDINATES ESTABLISHED BY NCDOT FOR MONUMENT "R2823-P16" WITH NAD 1983/95 STATE PLANE GRID COORDINATES OF NORTHING: 826864.432(11F) EASTING: 236449.150(11F) THE AVERAGE COMBINED GRID FACTOR USED ON THIS PROJECT (GROUND TO GRID) IS: 0.99995903 THE N.C. LAMBERT GRID BEARING AND LOCALIZED HORIZONTAL GROUND DISTANCE FROM "R2823-P16" TO L- STATION 10+00.00 IS 517' 49" 10" W 16294.12' ALL LINEAR DIMENSIONS ARE LOCALIZED HORIZONTAL DISTANCES VERTICAL DATUM USED IS NAVD 88

**PROPOSED SPLIT CASING CONDUIT**

/// DENOTES APPROACH SLAB  
--- DENOTES PAVEMENT REMOVAL

FOR -L- PROFILE SEE SHEET NO.6

SEE SHEETS S-1 THRU S- FOR STRUCTURE PLANS



MATCH LINE STA 22+00.00