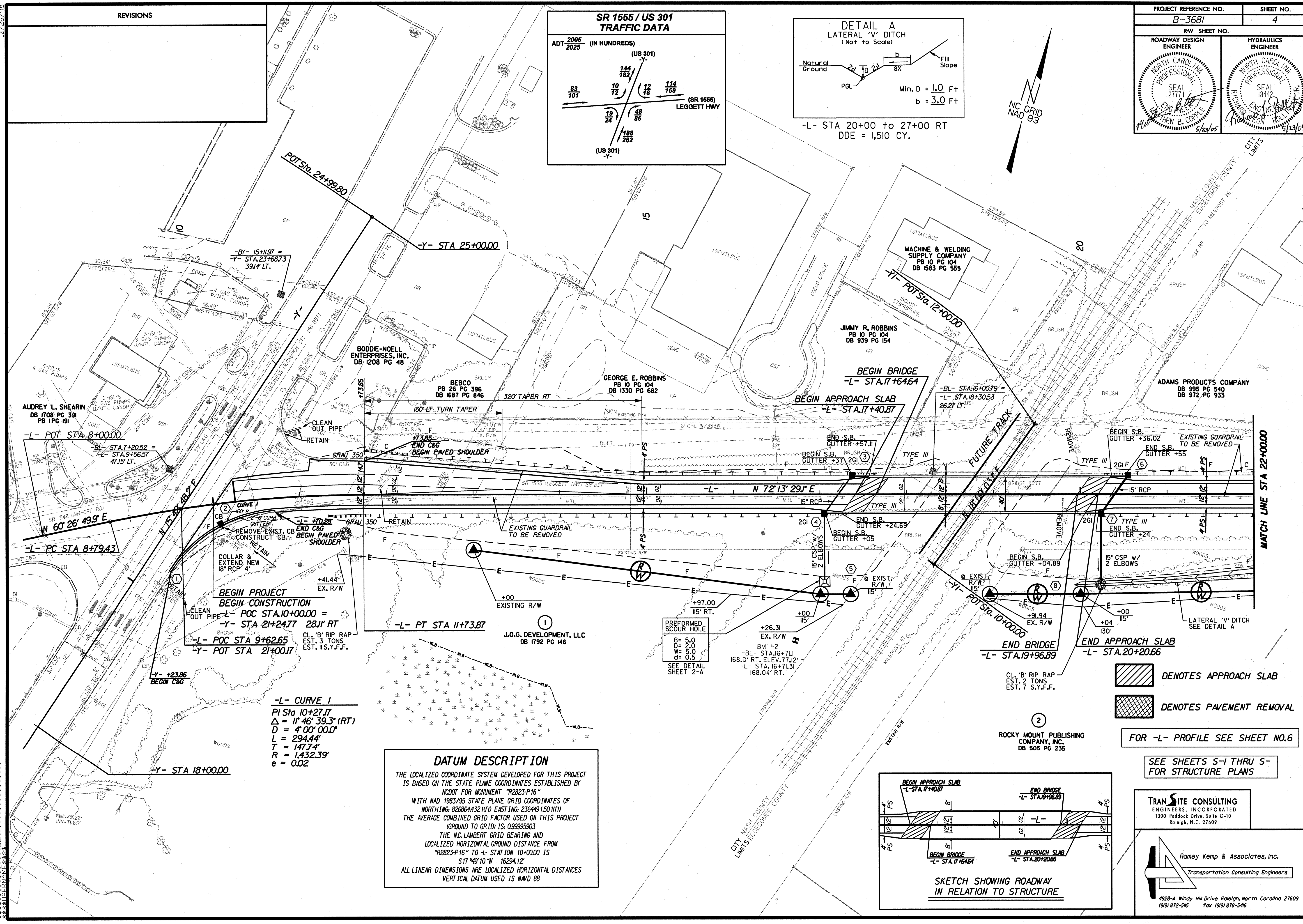
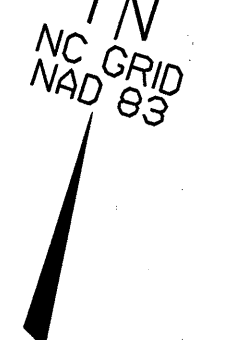


-L- STA 20+00 to 27+00 RT
DDE = 1,510 CY.



-BY- 15+11.97 =
-Y- STA 23+68.73
391'4" LT.

-L- POT STA 8+00.00
-BL- STA 7+20.52 =
-L- STA 9+56.57
471'5" LT.

-L- PC STA 8+79.43
N 60° 26' 49.9" E

BEGIN PROJECT
BEGIN CONSTRUCTION
-L- POC STA. 10+00.00 =
-Y- STA 21+24.77 2811' RT
-L- POC STA 9+62.65
-Y- POT STA 21+00.17

-L- CURVE 1
PI Sta 10+27.17
Δ = 11° 46' 39.3" (RT)
D = 4' 00" 00.0"
L = 294.44'
T = 147.74'
R = 1,432.39'
e = 0.02

DATUM DESCRIPTION

THE LOCALIZED COORDINATE SYSTEM DEVELOPED FOR THIS PROJECT IS BASED ON THE STATE PLANE COORDINATES ESTABLISHED BY NCDOT FOR MONUMENT "R2823-P16"

WITH NAD 1983/95 STATE PLANE GRID COORDINATES OF NORTHING: 826864.4321(11) EASTING: 236449.1501(11)

THE AVERAGE COMBINED GRID FACTOR USED ON THIS PROJECT (GROUND TO GRID) IS: 0.99999503

THE N.C. LAMBERT GRID BEARING AND LOCALIZED HORIZONTAL GROUND DISTANCE FROM "R2823-P16" TO -L- STATION 10+00.00 IS S17° 49' 10" W 16294.12'

ALL LINEAR DIMENSIONS ARE LOCALIZED HORIZONTAL DISTANCES VERTICAL DATUM USED IS NAD 88

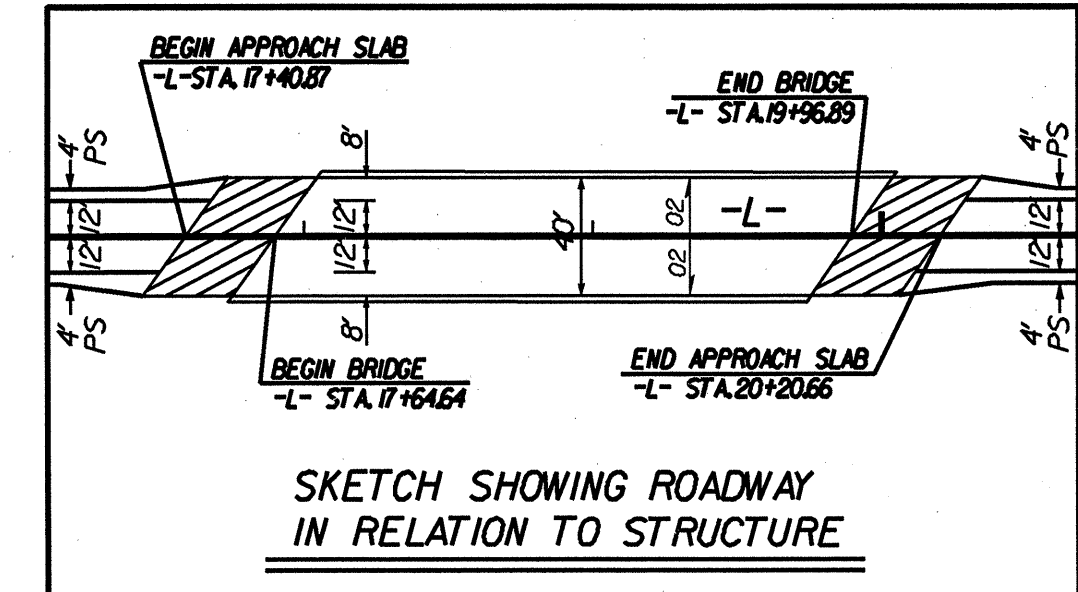
PREFORMED SCOUR HOLE
B = 5.0
D = 2.0
W = 5.0
d = 0.5
SEE DETAIL SHEET 2-A

CL 'B' RIP RAP EST. 2 TONS EST. 7 S.Y.F.F.

DENOTES APPROACH SLAB
 DENOTES PAVEMENT REMOVAL

FOR -L- PROFILE SEE SHEET NO.6

SEE SHEETS S-1 THRU S- FOR STRUCTURE PLANS



TRANSITE CONSULTING ENGINEERS, INCORPORATED
1300 Paddock Drive, Suite G-10
Raleigh, N.C. 27609

Ramey Kemp & Associates, Inc.
Transportation Consulting Engineers
4928-A Windy Hill Drive Raleigh, North Carolina 27609
(919) 872-5165 Fax (919) 878-5416

10/26/98