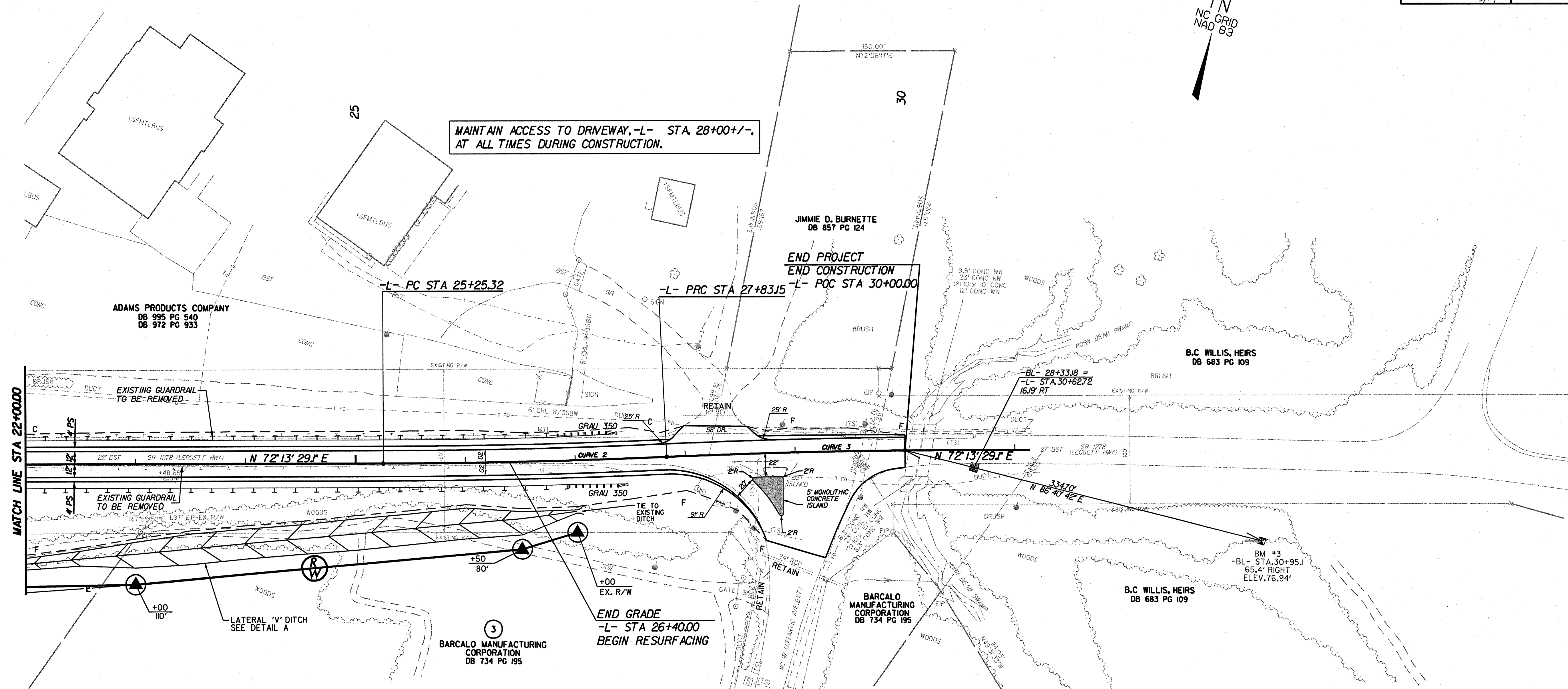




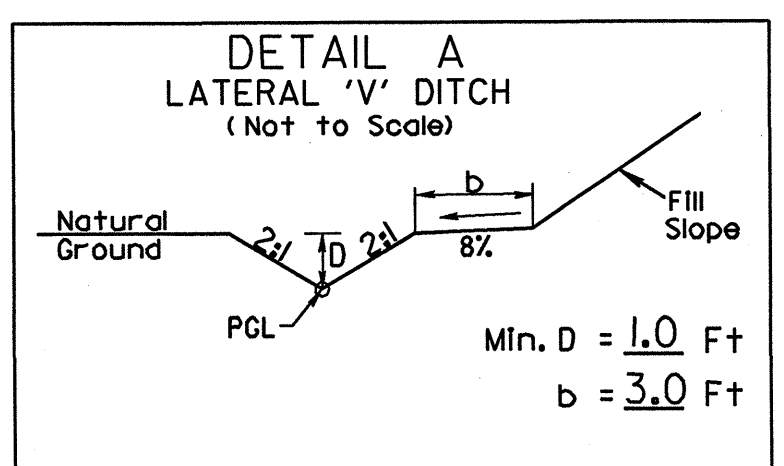
10/26/98



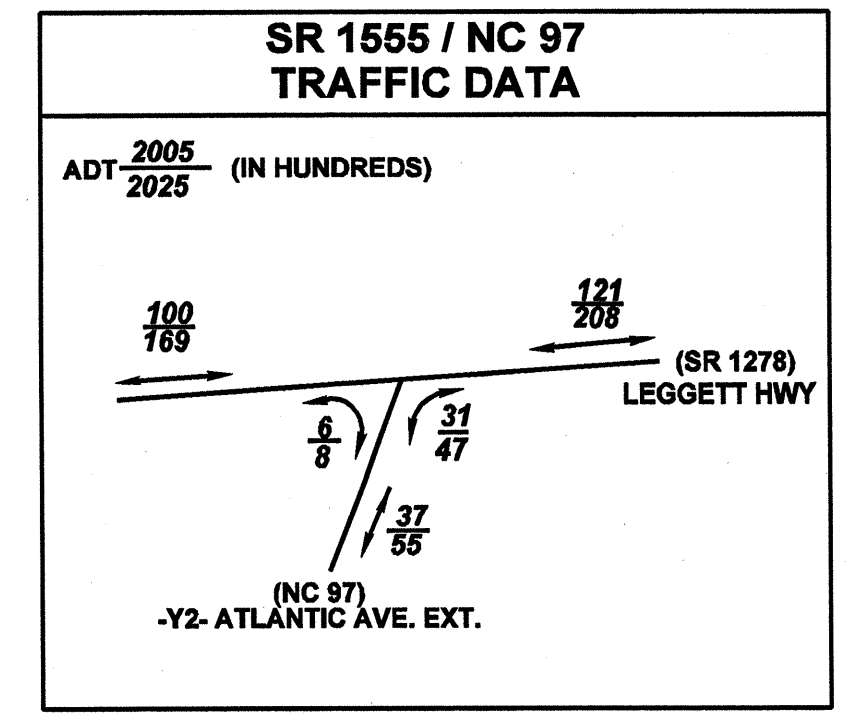
MATCH LINE STA 22+00.00

**-L- CURVE 2**  
 PI Sta 26+54.26  
 $\Delta = 2^\circ 34' 41.8"$  (LT)  
 $D = 100' 00.0"$   
 $L = 257.8283'$   
 $T = 128.9359'$   
 $R = 5,729.5780'$   
 $e = NC$

**-L- CURVE 3**  
 PI Sta 29+12.09  
 $\Delta = 2^\circ 34' 41.8"$  (RT)  
 $D = 100' 00.0"$   
 $L = 257.8280'$   
 $T = 128.9358'$   
 $R = 5,729.5780'$   
 $e = NC$

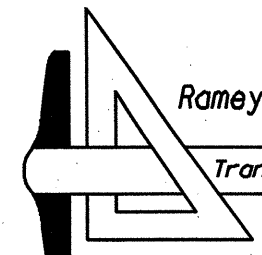


-L- STA 20+00 to 27+00 RT  
 DDE = 1,510 CY.



SEE SHEETS S-1 THRU S-4 FOR STRUCTURE PLANS

FOR -L- PROFILE SEE SHEET NO.7



Ramey Kemp & Associates, Inc.  
 Transportation Consulting Engineers  
 4928-A Windy Hill Drive Raleigh, North Carolina 27609  
 (919) 872-5165 Fax (919) 878-5416

TRAN SITE CONSULTING  
 ENGINEERS, INCORPORATED  
 1300 Paddock Drive, Suite G-10  
 Raleigh, N.C. 27609