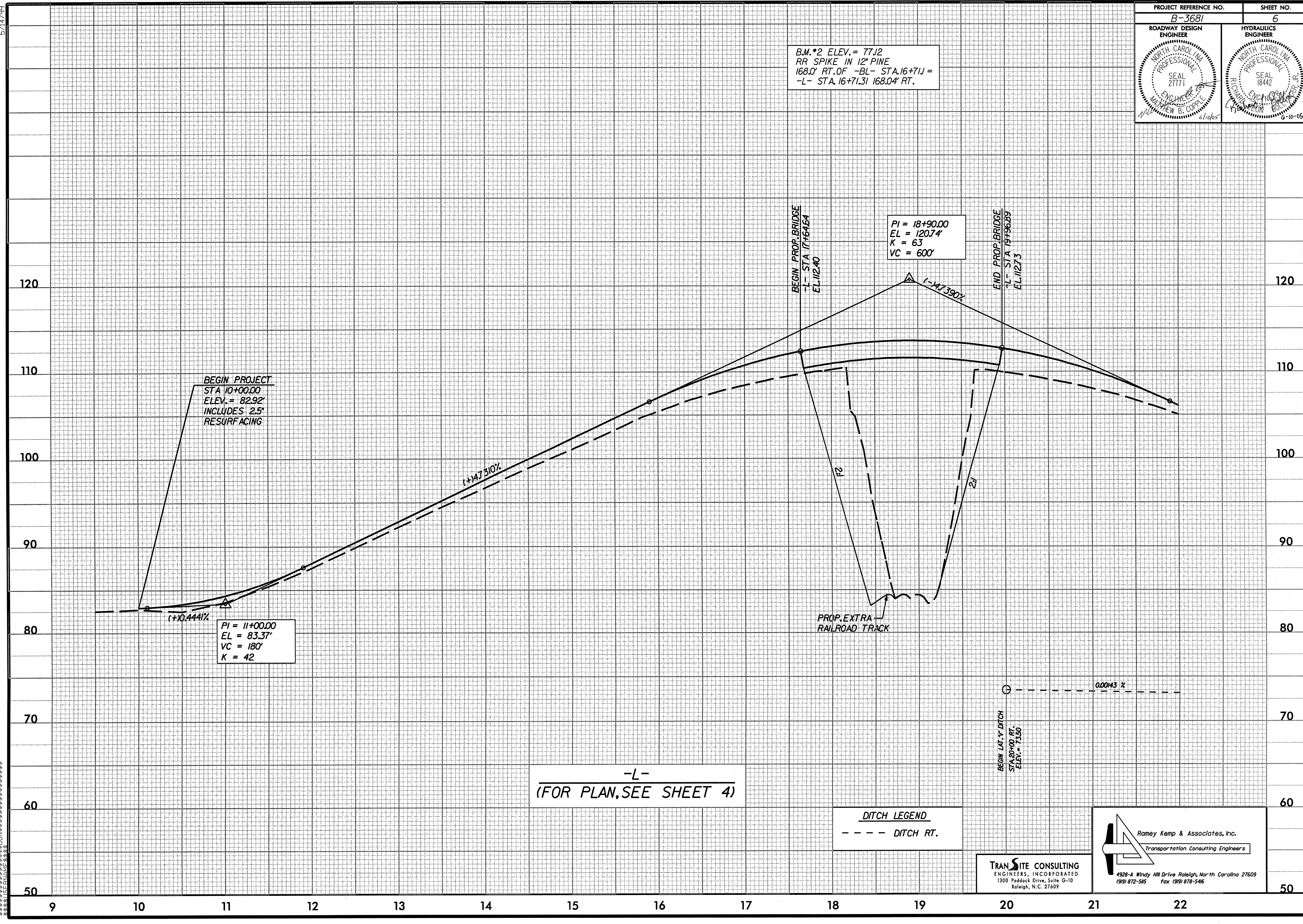


5/14/99

PROJECT REFERENCE NO. B-3681	SHEET NO. 6
ROADWAY DESIGN ENGINEER SEAL 27771 MATTHEW B. COPPLE 6/10/05	HYDRAULICS ENGINEER SEAL 18442 C. H. ... 6-10-05

B.M. *2 ELEV. = 77.12
RR SPIKE IN 12" PINE
168.0' RT. OF -BL- STA. 16+71.1 =
-L- STA. 16+71.31 168.04' RT.



BEGIN PROJECT
STA 10+00.00
ELEV. = 82.92'
INCLUDES 2.5'
RESURFACING

PI = 11+00.00
EL = 83.37'
VC = 180'
K = 42

PI = 18+90.00
EL = 120.74'
K = 63
VC = 600'

BEGIN PROP. BRIDGE
-L- STA 17+64.64
EL. 112.40

END PROP. BRIDGE
-L- STA 19+96.89
EL. 112.73

PROP. EXTRA
RAILROAD TRACK

BEGIN LAT. Y. DITCH
STA. 20+00 RT.
ELEV. = 73.50

-L-
(FOR PLAN, SEE SHEET 4)

DITCH LEGEND
- - - - DITCH RT.

TRAN SITE CONSULTING
ENGINEERS, INCORPORATED
1300 Paddock Drive, Suite G-10
Raleigh, N.C. 27609

Ramey Kemp & Associates, Inc.
Transportation Consulting Engineers
4928-A Windy Hill Drive Raleigh, North Carolina 27609
(919) 872-585 Fax (919) 878-5466

SYSTEMS DESIGN