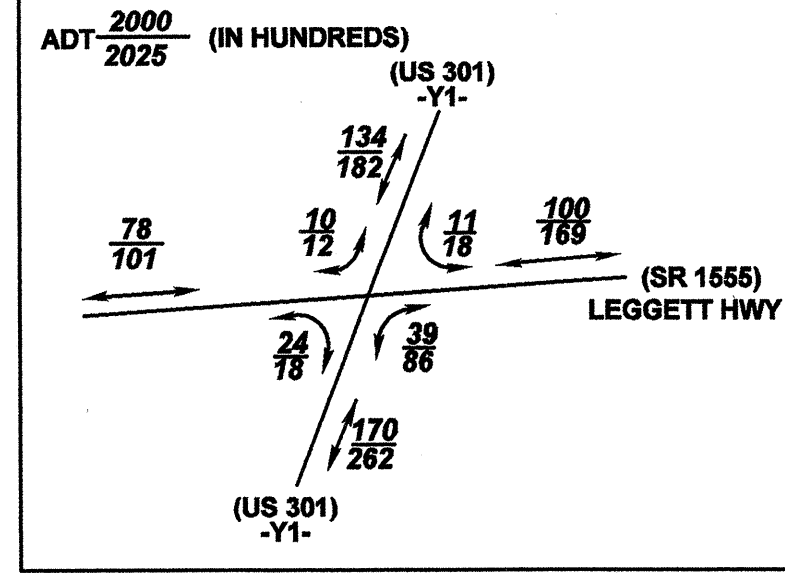


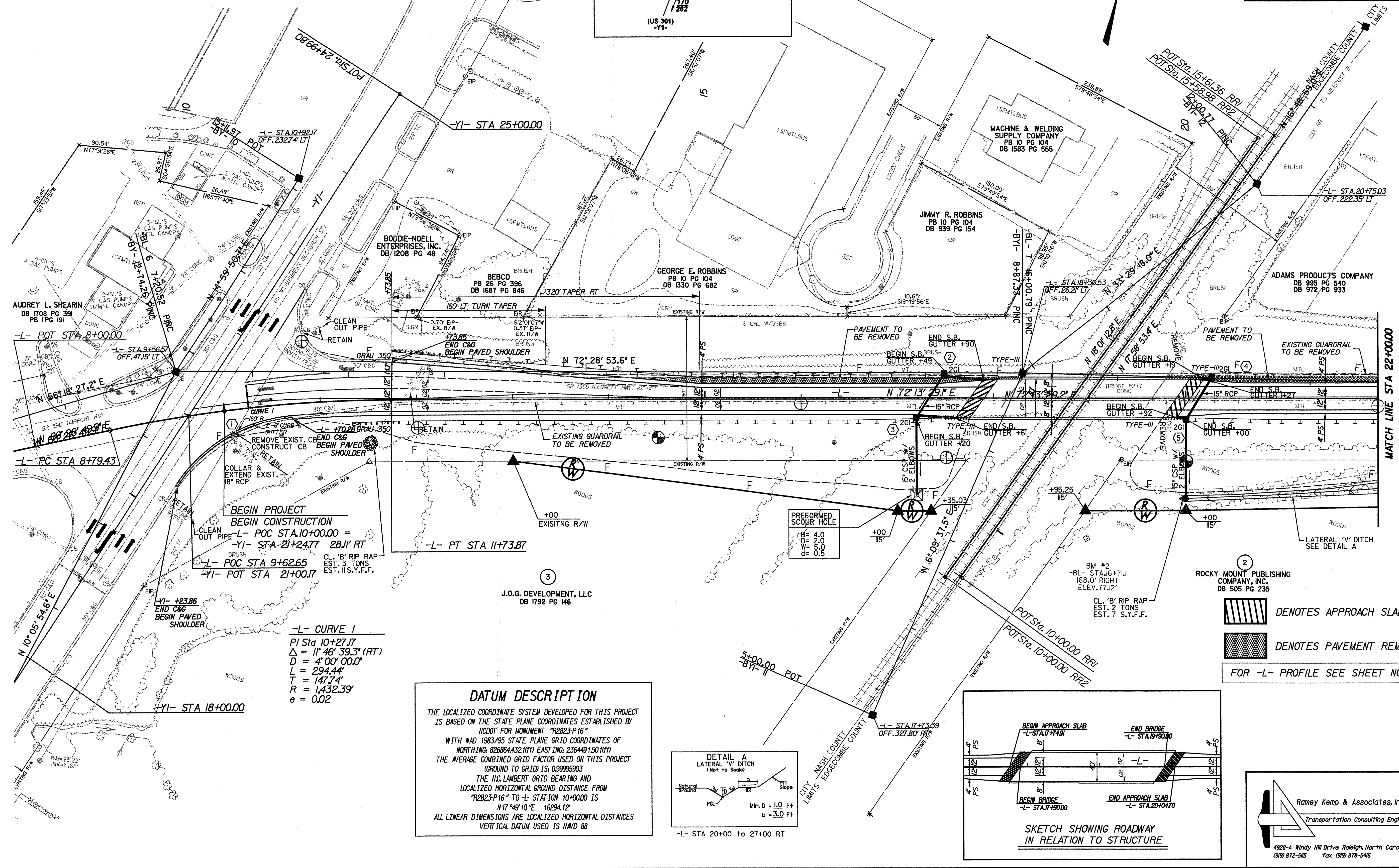
10/26/98

REVISIONS

**SR 1555 / US 301
TRAFFIC DATA**



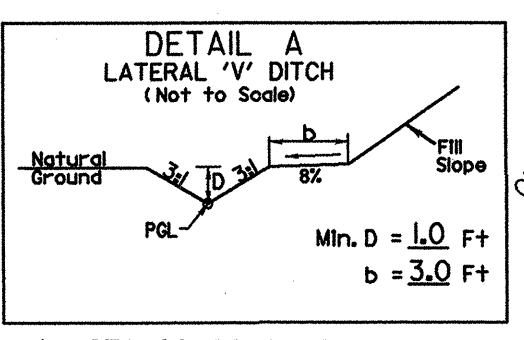
PROJECT REFERENCE NO. B-3681	SHEET NO. 4
RW SHEET NO.	
ROADWAY DESIGN ENGINEER	HYDRAULICS ENGINEER
INCOMPLETE PLANS DO NOT USE FOR R/W ACQUISITION PRELIMINARY PLANS DO NOT USE FOR CONSTRUCTION	



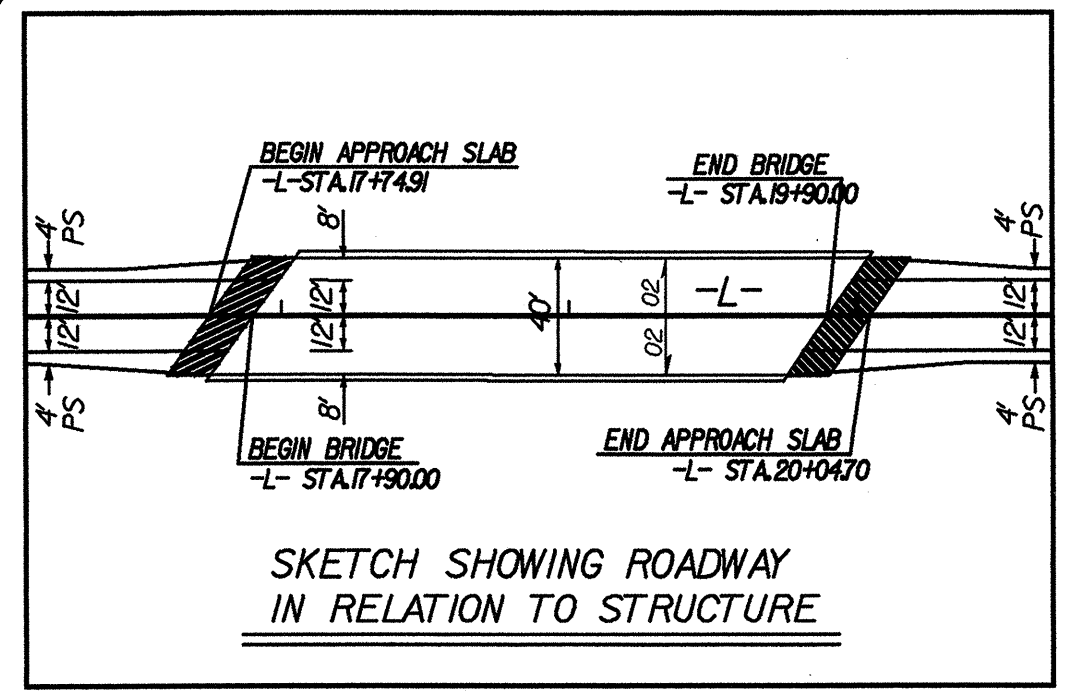
**BEGIN PROJECT
BEGIN CONSTRUCTION**
 -L- POC STA. 10+00.00 =
 -YI- STA. 21+24.77 28.11' RT
 -L- POC STA 9+62.65
 -YI- POT STA 21+00.17

-L- CURVE 1
 PI Sta 10+27.17
 $\Delta = 11^\circ 46' 39.3''$ (RT)
 $D = 4' 00'' 00.0''$
 $L = 294.44'$
 $T = 147.74'$
 $R = 1,432.39'$
 $e = 0.02$

DATUM DESCRIPTION
 THE LOCALIZED COORDINATE SYSTEM DEVELOPED FOR THIS PROJECT IS BASED ON THE STATE PLANE COORDINATES ESTABLISHED BY NCDOT FOR MONUMENT "R2823-P16" WITH NAD 1983/95 STATE PLANE GRID COORDINATES OF NORTHING: 826864.432(111) EASTING: 236449.150(111) THE AVERAGE COMBINED GRID FACTOR USED ON THIS PROJECT (GROUND TO GRID) IS: 0.99995903 THE N.C. LAMBERT GRID BEARING AND LOCALIZED HORIZONTAL GROUND DISTANCE FROM "R2823-P16" TO -L- STATION 10+00.00 IS N 17° 49' 10" E 16294.12' ALL LINEAR DIMENSIONS ARE LOCALIZED HORIZONTAL DISTANCES VERTICAL DATUM USED IS NAVD 88



-L- STA 20+00 to 27+00 RT



DENOTES APPROACH SLAB
 DENOTES PAVEMENT REMOVAL
 FOR -L- PROFILE SEE SHEET NO.6

Ramey Kemp & Associates, Inc.
 Transportation Consulting Engineers
 4928-A Windy Hill Drive Raleigh, North Carolina 27609
 (919) 872-585 Fax (919) 878-5416