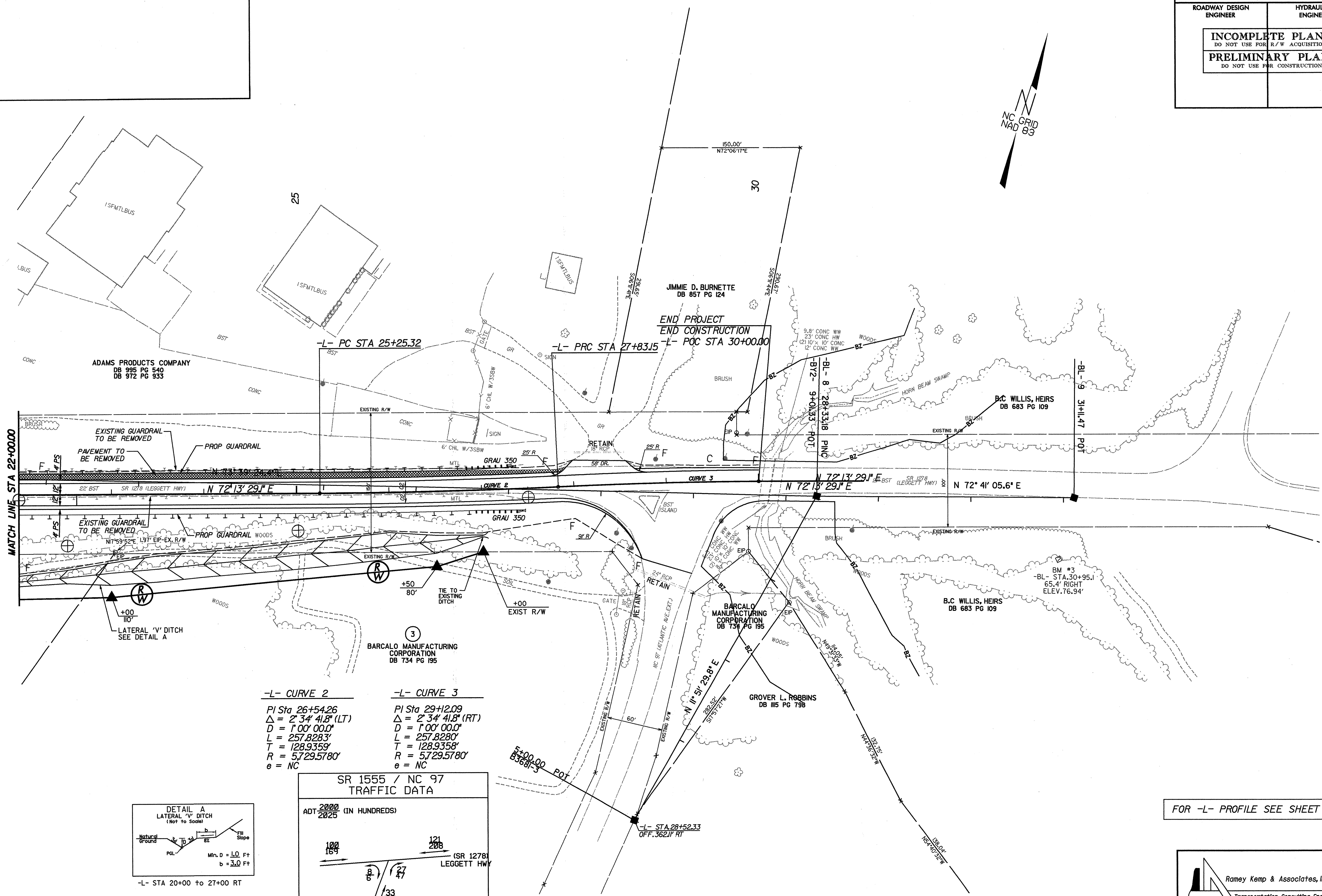
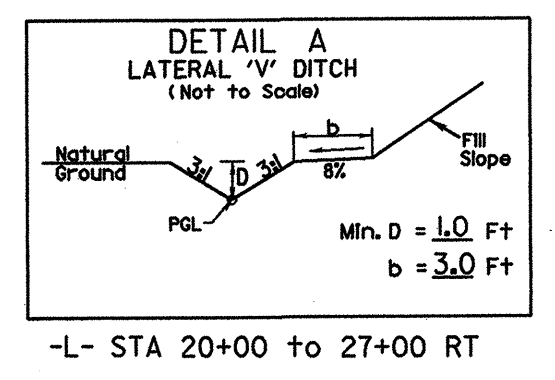


10/26/98

PROJECT REFERENCE NO. B-3681	SHEET NO. 5
RW SHEET NO.	
ROADWAY DESIGN ENGINEER	HYDRAULICS ENGINEER
INCOMPLETE PLANS DO NOT USE FOR R/W ACQUISITION PRELIMINARY PLANS DO NOT USE FOR CONSTRUCTION	



-L- CURVE 2	-L- CURVE 3
PI Sta 26+54.26	PI Sta 29+12.09
Δ = 2° 34' 41.8" (LT)	Δ = 2° 34' 41.8" (RT)
D = 1° 00' 00.0"	D = 1° 00' 00.0"
L = 257.8283'	L = 257.8280'
T = 128.9359'	T = 128.9358'
R = 5,729.5780'	R = 5,729.5780'
e = NC	e = NC



SR 1555 / NC 97 TRAFFIC DATA	
ADT 2000	(IN HUNDREDS)
2025	
100	121
169	208
8	27
6	47
33	55
(NC 97)	
-Y2- ATLANTIC AVE. EXT.	

FOR -L- PROFILE SEE SHEET NO.7


Ray Kemp & Associates, Inc.
 Transportation Consulting Engineers
 4928-A Windy Hill Drive Raleigh, North Carolina 27609
 (919) 872-585 Fax (919) 878-5416