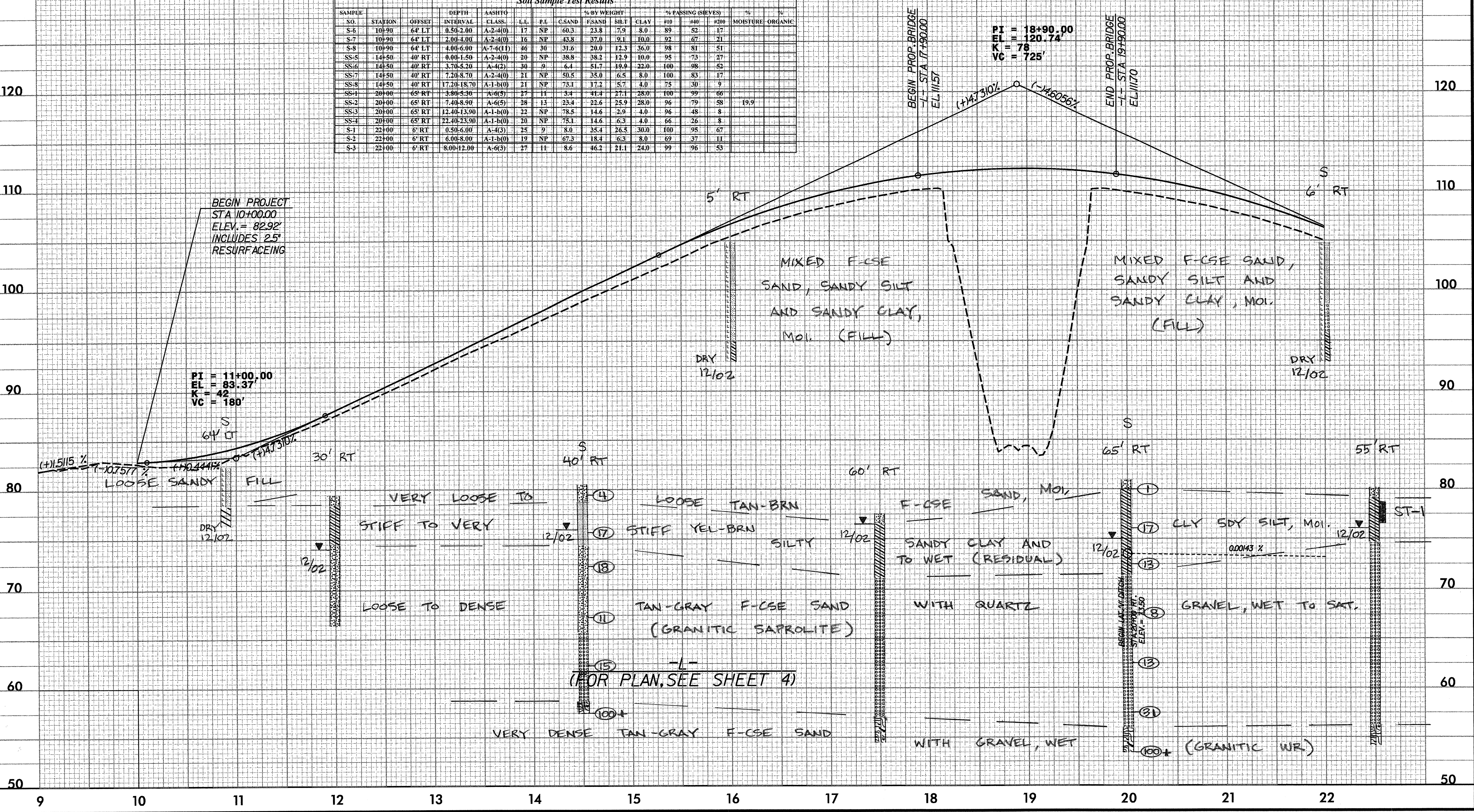


5/14/99

B.M. #2 ELEV. = 77.12
 RR SPIKE IN 12" PINE
 168.0' RT. OF -BL- STA. 16+71.1 =
 -L- STA. 19+00.21

Soil Sample Test Results															
SAMPLE NO.	STATION	OFFSET	DEPTH	AASHTO CLASS.	L.L.	P.I.	% BY WEIGHT				% PASSING (SIEVES)			MOISTURE	ORGANIC
							C.SAND	F.SAND	SILT	CLAY	#10	#40	#200		
S-6	10+90	64' LT	0.50-2.00	A-2-4(0)	17	NP	60.3	23.8	7.9	8.0	89	52	17		
S-7	10+90	64' LT	2.00-4.00	A-2-4(0)	16	NP	43.8	37.0	9.1	10.0	92	67	21		
S-8	10+90	64' LT	4.00-6.00	A-7-6(11)	46	30	31.6	20.0	12.3	36.0	98	81	51		
SS-5	14+50	40' RT	0.00-1.50	A-2-4(0)	20	NP	38.8	38.2	12.9	10.0	95	73	27		
SS-6	14+50	40' RT	3.70-5.20	A-4(2)	30	9	6.4	51.7	19.9	22.0	100	98	62		
SS-7	14+50	40' RT	7.20-8.70	A-2-4(0)	21	NP	50.5	35.0	6.5	8.0	100	83	17		
SS-8	14+50	40' RT	17.20-18.70	A-1-b(0)	21	NP	73.1	17.2	5.7	4.0	75	30	9		
SS-1	20+00	65' RT	3.80-5.30	A-6(5)	27	11	3.4	41.4	27.1	28.0	100	99	66		
SS-2	20+00	65' RT	7.40-8.90	A-6(5)	28	13	23.4	23.6	25.9	28.0	96	79	58	19.9	
SS-3	20+00	65' RT	12.40-13.90	A-1-b(0)	22	NP	78.5	14.6	2.9	4.0	96	48	8		
SS-4	20+00	65' RT	21.40-23.90	A-1-b(0)	20	NP	75.1	14.6	6.3	4.0	66	26	8		
S-1	22+00	8' RT	0.50-6.00	A-4(3)	25	9	8.0	35.4	26.5	30.0	100	95	67		
S-2	22+00	8' RT	6.00-8.00	A-1-b(0)	19	NP	67.3	18.4	6.3	8.0	69	37	11		
S-3	22+00	6' RT	8.00-12.00	A-6(3)	27	11	8.6	46.2	21.1	24.0	99	96	53		



5/14/99
 100
 90
 80
 70
 60
 50