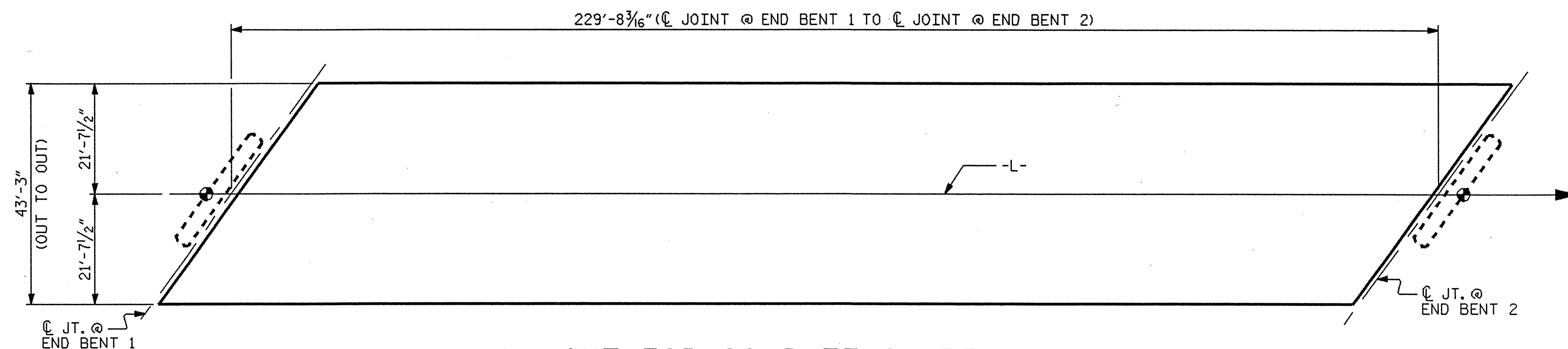


**CONCRETE DECK POUR DETAIL**

SEE TRANSVERSE CONSTRUCTION JOINT DETAIL

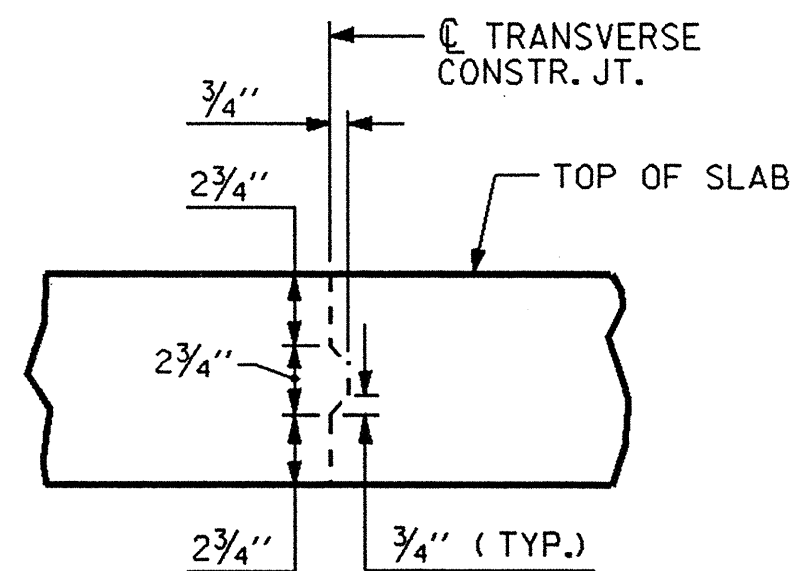


**LAYOUT FOR COMPUTING AREA OF REINFORCED CONCRETE DECK SLAB**

(SQ. FT. = 9934)

SUPERSTRUCTURE REINFORCING STEEL LENGTHS ARE BASED ON THE FOLLOWING MINIMUM SPLICE LENGTHS

BAR SIZE	SUPERSTRUCTURE EXCEPT APPROACH SLABS, PARAPET, AND BARRIER RAIL		APPROACH SLABS		PARAPET AND BARRIER RAIL
	EPOXY COATED	UNCOATED	EPOXY COATED	UNCOATED	
#4	2'-0"	1'-9"	2'-0"	1'-9"	2'-9"
#5	2'-6"	2'-2"	2'-6"	2'-2"	3'-5"
#6	3'-0"	2'-7"	3'-10"	2'-7"	4'-4"
#7	5'-3"	3'-6"			
#8	6'-10"	4'-7"			



**TRANSVERSE CONSTRUCTION JOINT DETAIL**

NOTE: REINFORCING STEEL IN SLAB NOT SHOWN. LONGITUDINAL REINFORCING STEEL SHALL BE CONTINUOUS THRU JOINT

**BILL OF MATERIAL**

BAR	NO.	SIZE	TYPE	LENGTH	WEIGHT
* A1	341	#5	STR	42'-11"	15264
A2	341	#5	STR	42'-11"	15264
* A3	6	#6	STR	15'-2"	137
* A101	6	#5	STR	40'-7"	254
* A102	6	#5	STR	38'-2"	239
* A103	6	#5	STR	35'-9"	224
* A104	6	#5	STR	33'-4"	209
* A105	6	#5	STR	30'-11"	194
* A106	6	#5	STR	28'-6"	178
* A107	6	#5	STR	26'-0"	163
* A108	6	#5	STR	23'-7"	148
* A109	6	#5	STR	21'-2"	133
* A110	6	#5	STR	18'-9"	117
* A111	6	#5	STR	16'-4"	102
* A112	6	#5	STR	13'-11"	87
* A113	6	#5	STR	11'-6"	72
* A114	6	#5	STR	9'-0"	56
* A115	6	#5	STR	6'-7"	41
* A116	6	#5	STR	4'-2"	26
A201	6	#5	STR	40'-7"	254
A202	6	#5	STR	38'-2"	239
A203	6	#5	STR	35'-9"	224
A204	6	#5	STR	33'-4"	209
A205	6	#5	STR	30'-11"	194
A206	6	#5	STR	28'-6"	178
A207	6	#5	STR	26'-0"	163
A208	6	#5	STR	23'-7"	148
A209	6	#5	STR	21'-2"	133
A210	6	#5	STR	18'-9"	117
A211	6	#5	STR	16'-4"	102
A212	6	#5	STR	13'-11"	87
A213	6	#5	STR	11'-6"	72
A214	6	#5	STR	9'-0"	56
A215	6	#5	STR	6'-7"	41
A216	6	#5	STR	4'-2"	26
* B1	208	#5	STR	51'-10"	11245
* B2	204	#5	STR	47'-9"	10160
* B3	58	#4	STR	16'-6"	639
B4	184	#5	STR	58'-11"	11307
* G1	2	#5	STR	52'-10"	110

REINFORCING STEEL	28814 LBS.
* EPOXY COATED REINFORCING STEEL	40586 LBS.

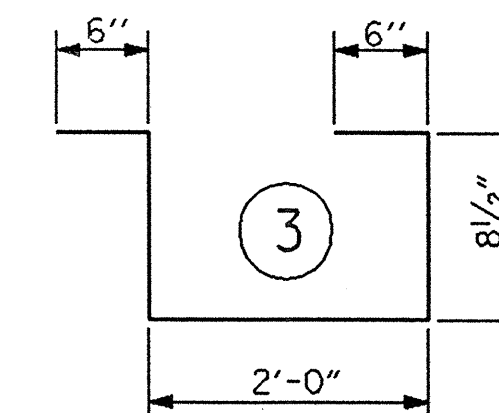
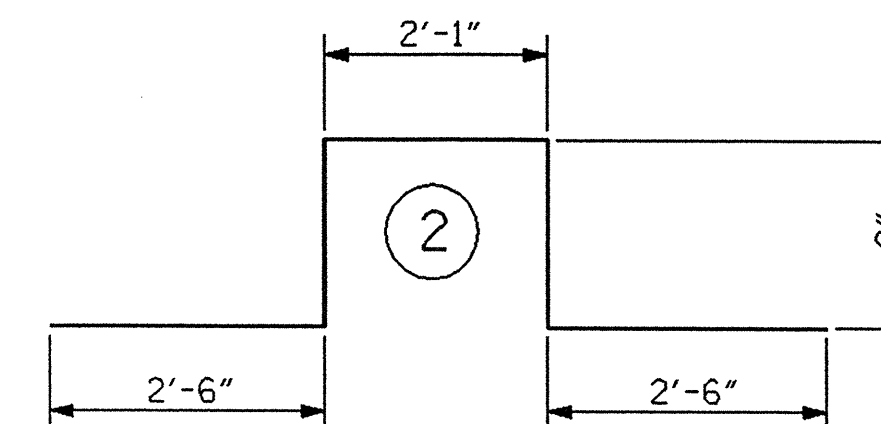
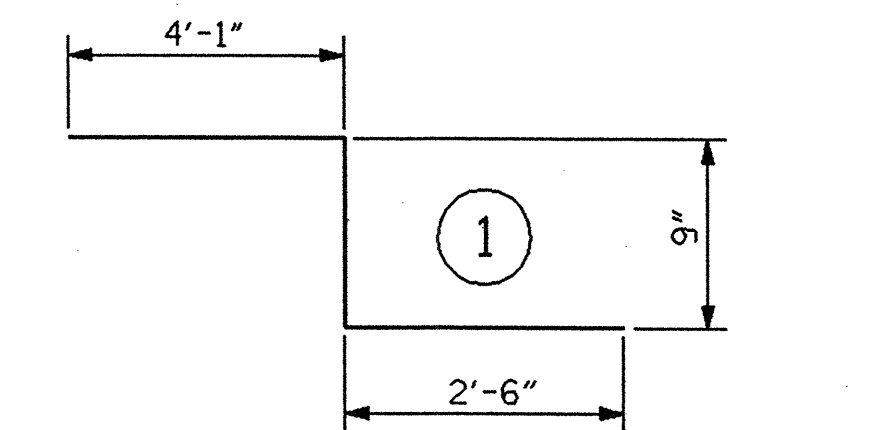
**GROOVING BRIDGE FLOORS**

APPROACH SLABS	1774	SQ.FT.
BRIDGE DECK	8479	SQ.FT.
TOTAL	10253	SQ.FT.

**CLASS AA CONCRETE BREAKDOWN**

	(cu. yds.)
POUR 1	31.4
POUR 2	158.8
POUR 3	111.0
TOTAL	301.2

**BAR TYPES**



ALL BAR DIMENSIONS ARE OUT TO OUT

**— SUPERSTRUCTURE BILL OF MATERIAL —**

	CLASS AA CONCRETE (CU.YDS.)	REINFORCING STEEL (LBS.)	EPOXY COATED REINFORCING STEEL (LBS.)
TOTALS**	301.2	28814	40586

\*QUANTITIES FOR BARRIER RAIL ARE NOT INCLUDED

PROJECT NO. B-3681  
NASH/EDGEcombe COUNTY  
 STATION: 18+89.64 -L-



STATE OF NORTH CAROLINA  
 DEPARTMENT OF TRANSPORTATION  
 RALEIGH

**SUPERSTRUCTURE BILL OF MATERIAL**

REVISIONS				SHEET NO.
NO.	BY:	DATE:	NO.	DATE:
1			3	
2			4	

TOTAL SHEETS: **36**

DRAWN BY: A.M.KEETER DATE: 11/23/04  
 CHECKED BY: K.M.McCAULEY DATE: 3/9/05