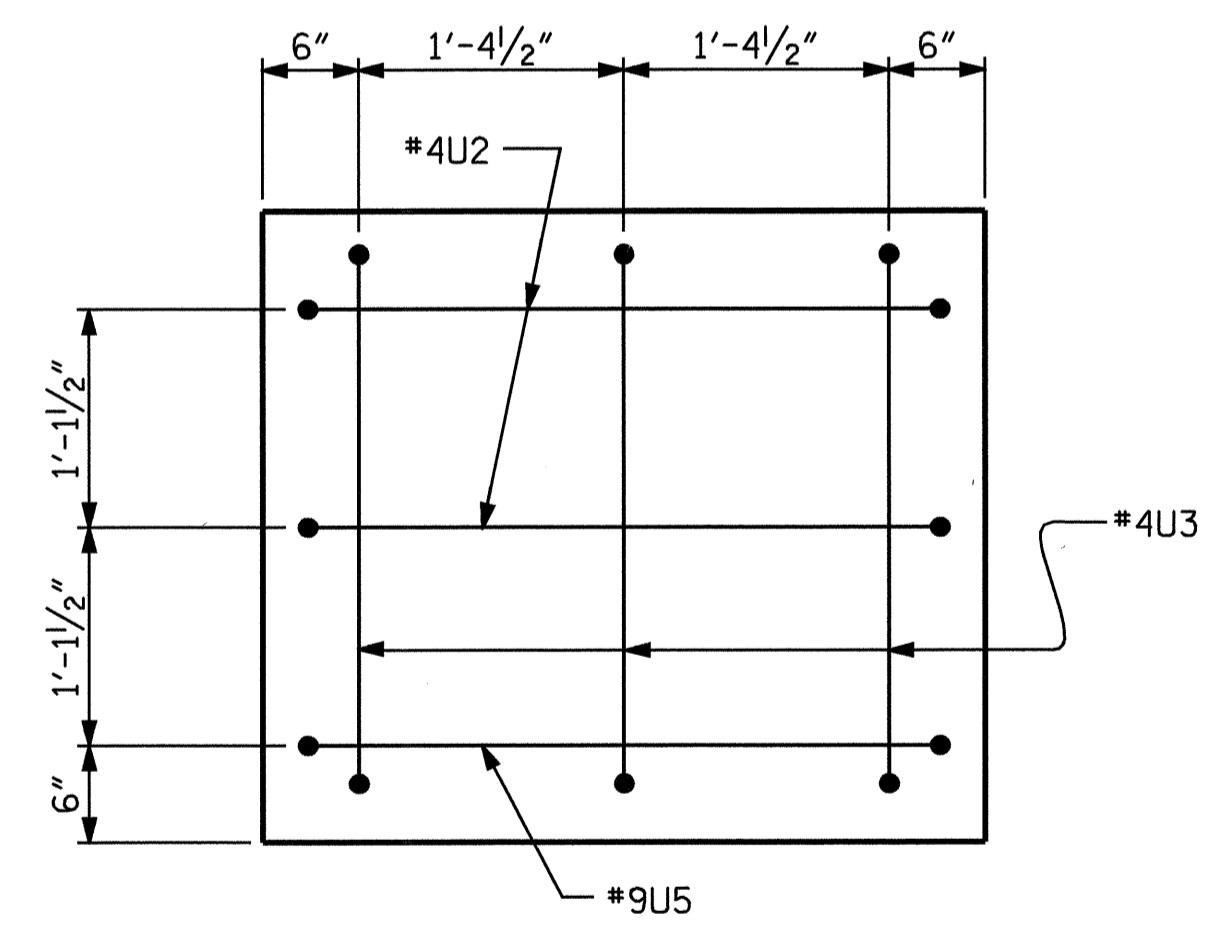
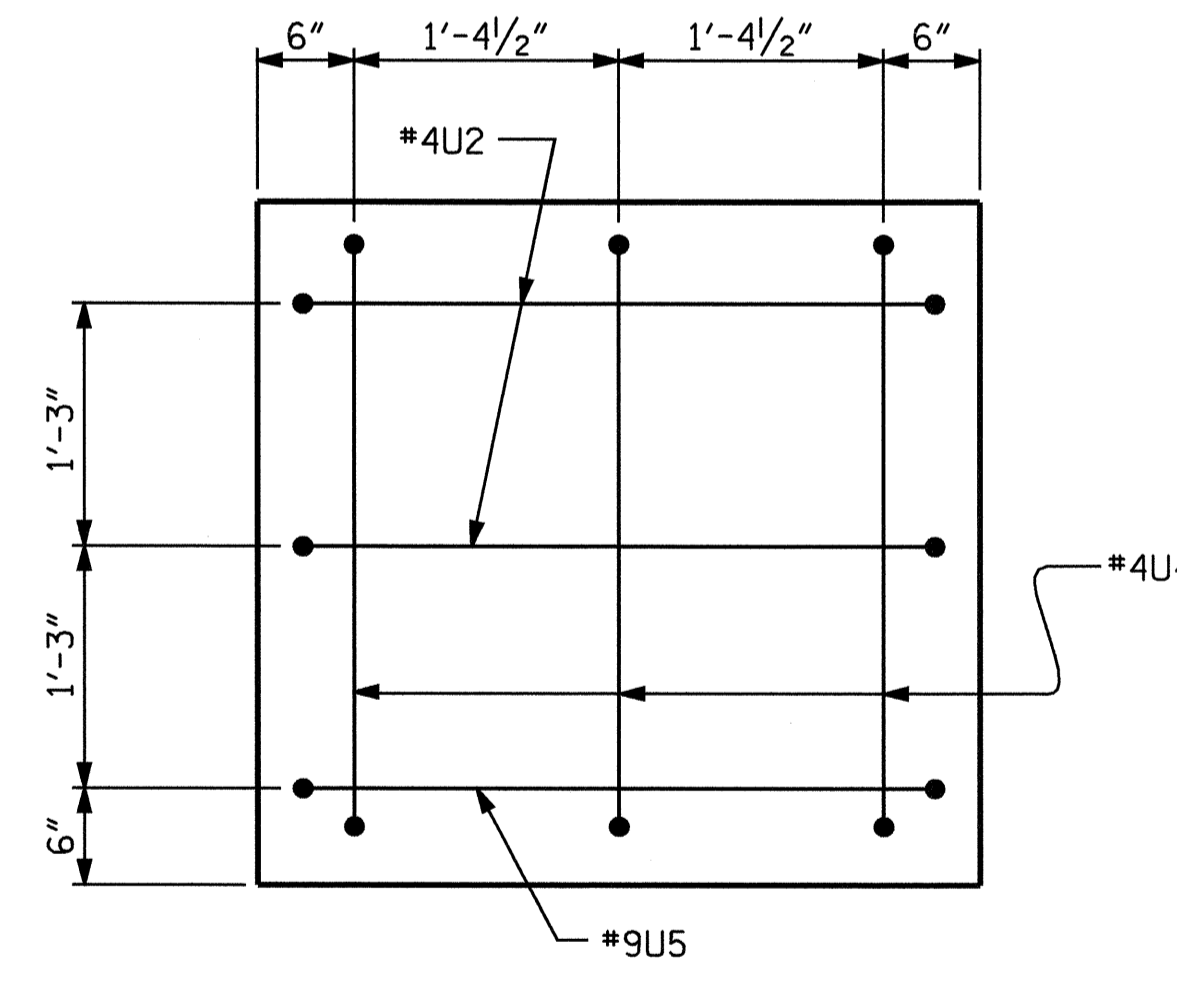


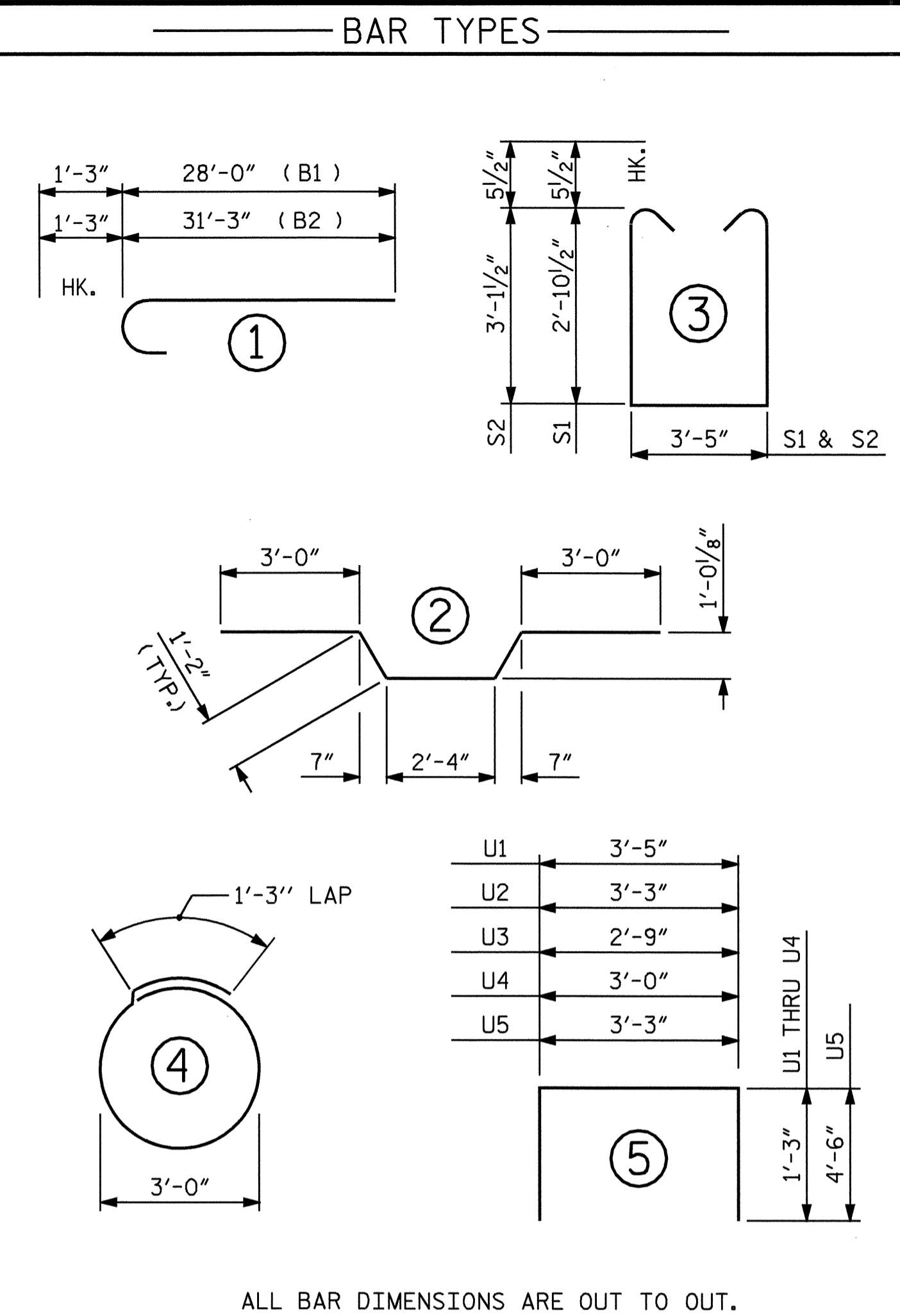
SECTION A-A



VIEW X-X



VIEW Y-Y

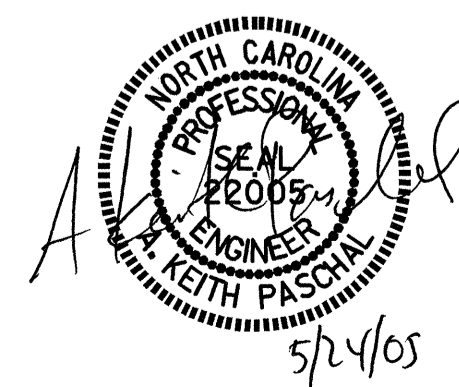


ALL BAR DIMENSIONS ARE OUT TO OUT.

BILL OF MATERIAL FOR BENT 1					
BAR NO	SIZE	TYPE	LENGTH	WEIGHT	
B1	5	9	1	29- 3	497
B2	5	9	1	32- 6	553
B3	4	10	STR	50- 6	869
B4	4	5	STR	50- 6	211
B5	12	4	STR	26- 6	212
B6	13	4	STR	3- 5	30
B7	7	5	2	10- 8	78
S1	17	5	3	10- 1	179
S2	30	5	3	10- 7	331
S3	16	4	4	10- 9	115
U1	36	4	5	5- 11	142
U2	4	4	5	5- 9	15
U3	3	4	5	5- 3	11
U4	3	4	5	5- 6	11
U5	2	9	5	12- 3	83
REINFORCING STEEL LBS.					3337
CLASS A CONCRETE :					
CAP TOTAL C.Y.					24.7
NOTE : THE CONCRETE DISPLACED BY THE PIPE PILES HAS BEEN DEDUCTED FROM CLASS A CONCRETE TOTAL.					
PP 24 X 0.500 STEEL PILES NO. 8					LIN FT. 440

PROJECT NO. B-3681  
 NASH/EDGECOMBE COUNTY  
 STATION: 18+89.64 -L-

SHEET 2 OF 2  
 STATE OF NORTH CAROLINA  
 DEPARTMENT OF TRANSPORTATION  
 RALEIGH  
 SUBSTRUCTURE  
 BENT 1



REVISIONS						SHEET NO.
NO.	BY:	DATE:	NO.	BY:	DATE:	S-25
1			3			TOTAL SHEETS
2			4			36

DRAWN BY : E. G. ALLEN DATE : 1-06-05  
 CHECKED BY : A. M. KEETER DATE : 1-29-05