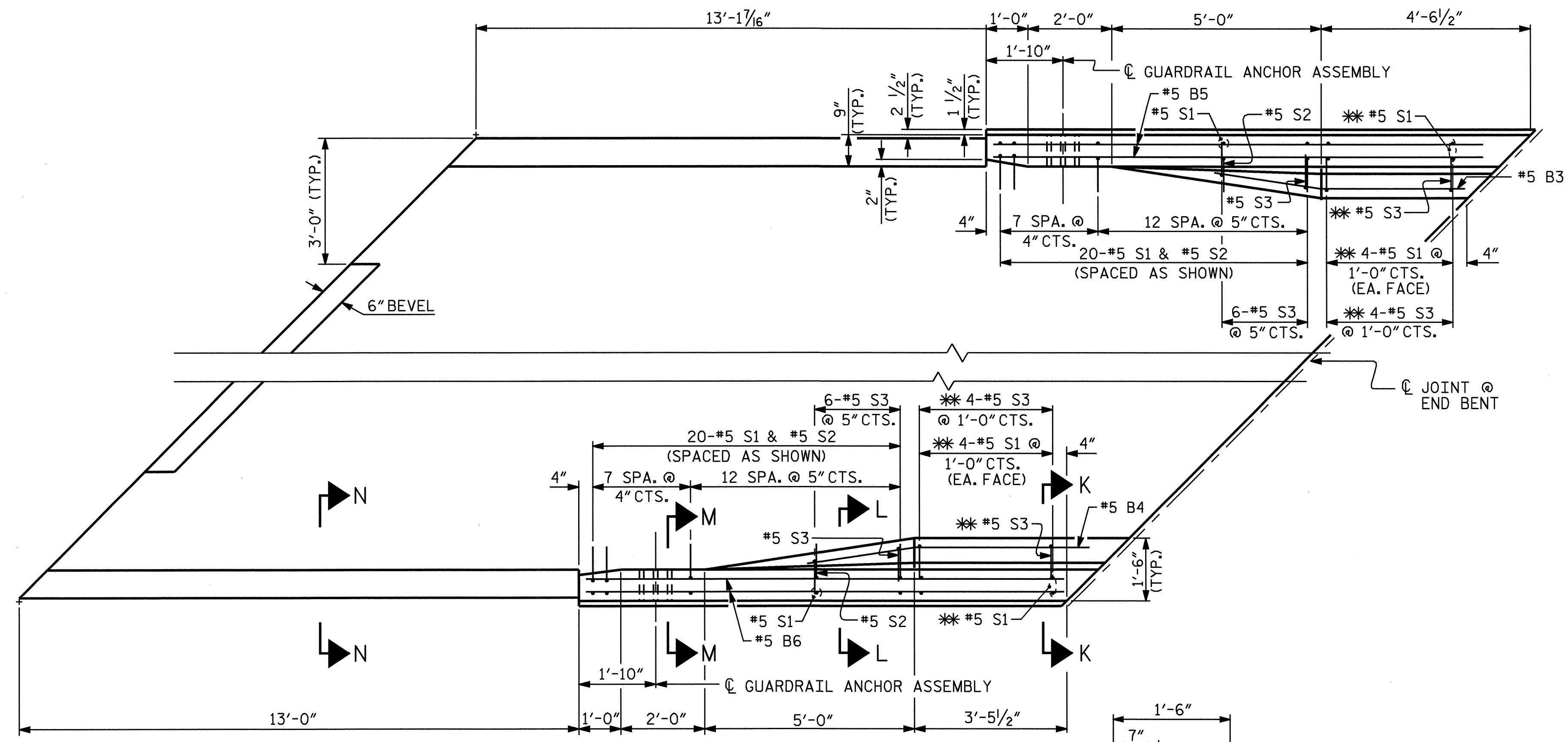
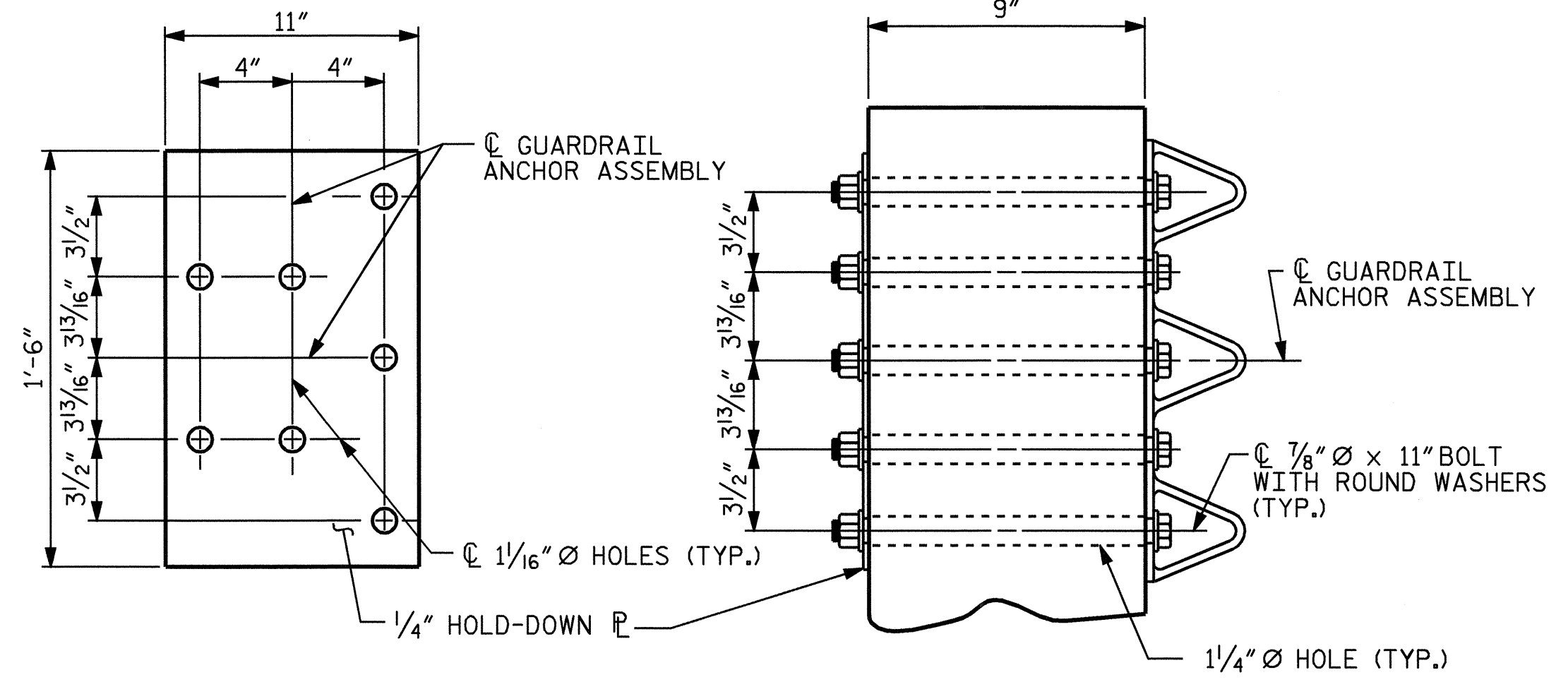


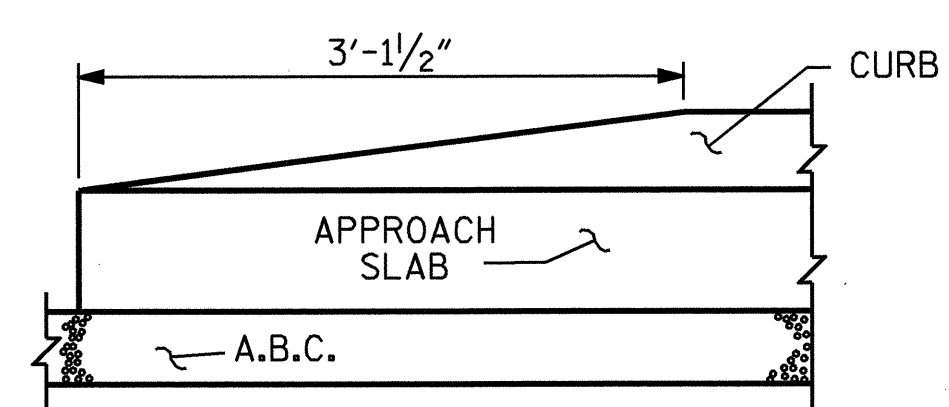
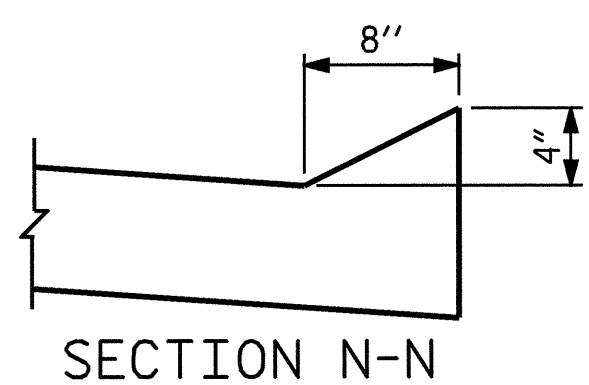
NOTE: THE #5 S1 AND #5 S3 BARS SHALL BE INSTALLED, WHERE NOTED ON THE PLANS. USING AN ADHESIVE ANCHORING SYSTEM AFTER SAWING THE JOINT. FOR ADHESIVELY ANCHORED ANCHOR BOLTS OR DOWELS, SEE SPECIAL PROVISIONS. THE YIELD LOAD FOR THE #5 S1 AND THE #5 S3 BARS IS 18.6 KIPS. FIELD TESTING FOR THE ADHESIVE BONDING SYSTEM IS NOT REQUIRED.



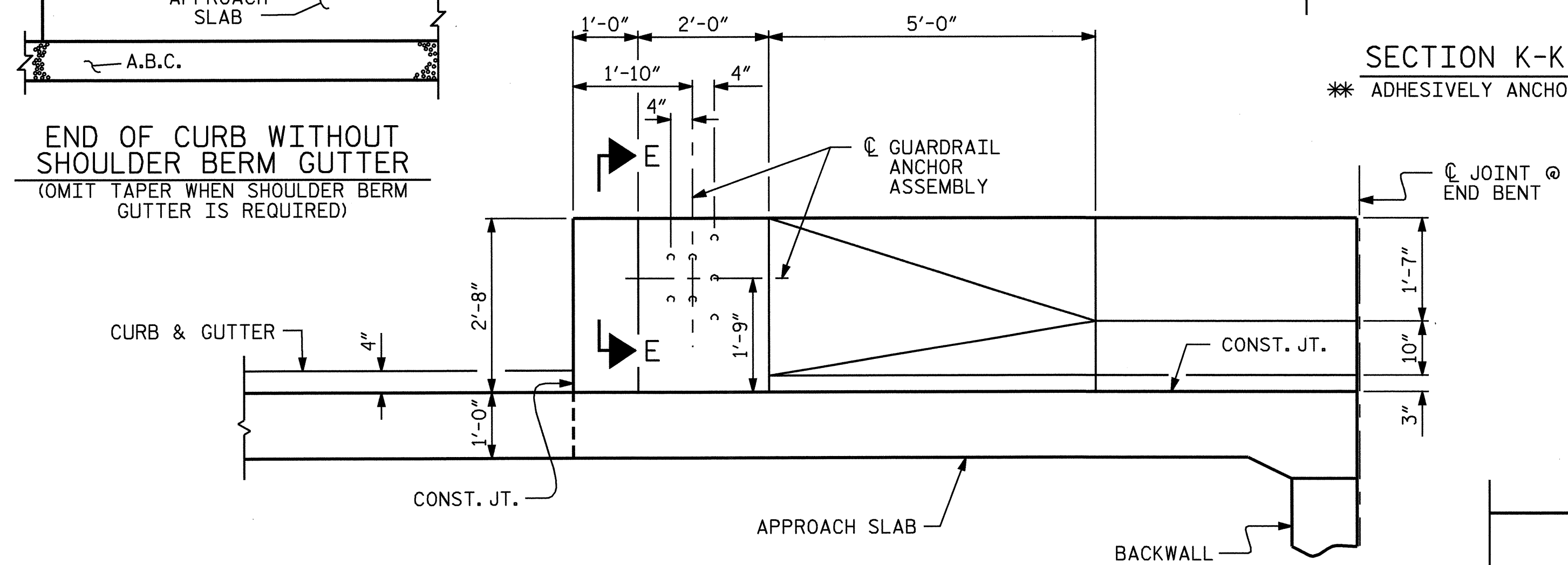
PLAN  
BEGIN APPROACH SLAB SHOWN,  
END APPROACH SLAB SIMILAR



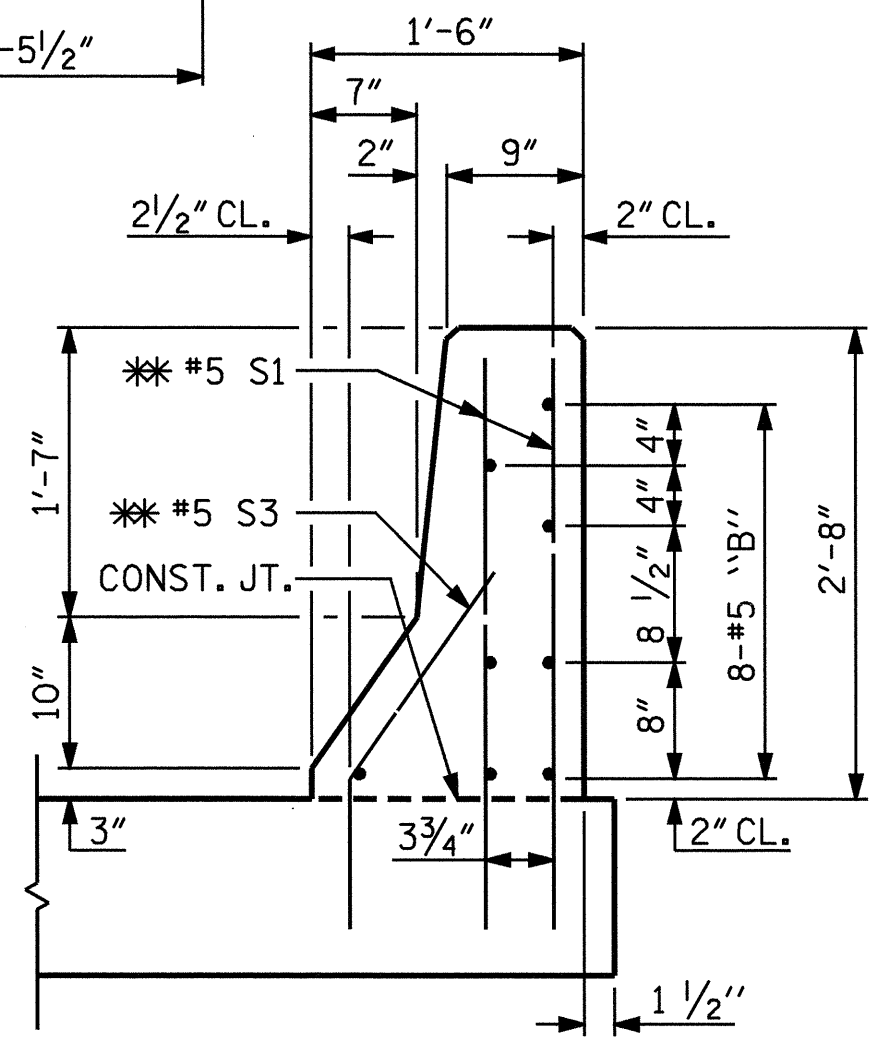
PLAN SECTION E-E  
GUARDRAIL ANCHOR ASSEMBLY DETAILS



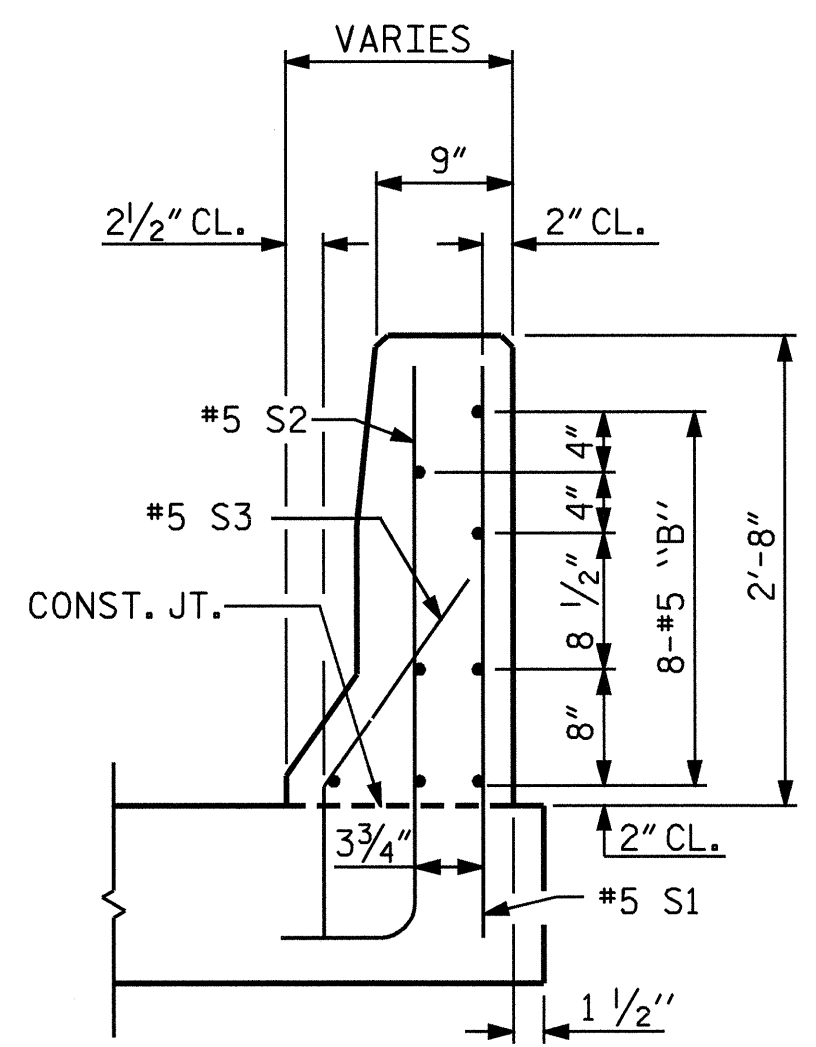
END OF CURB WITHOUT SHOULDER BERM GUTTER  
(OMIT TAPER WHEN SHOULDER BERM GUTTER IS REQUIRED)



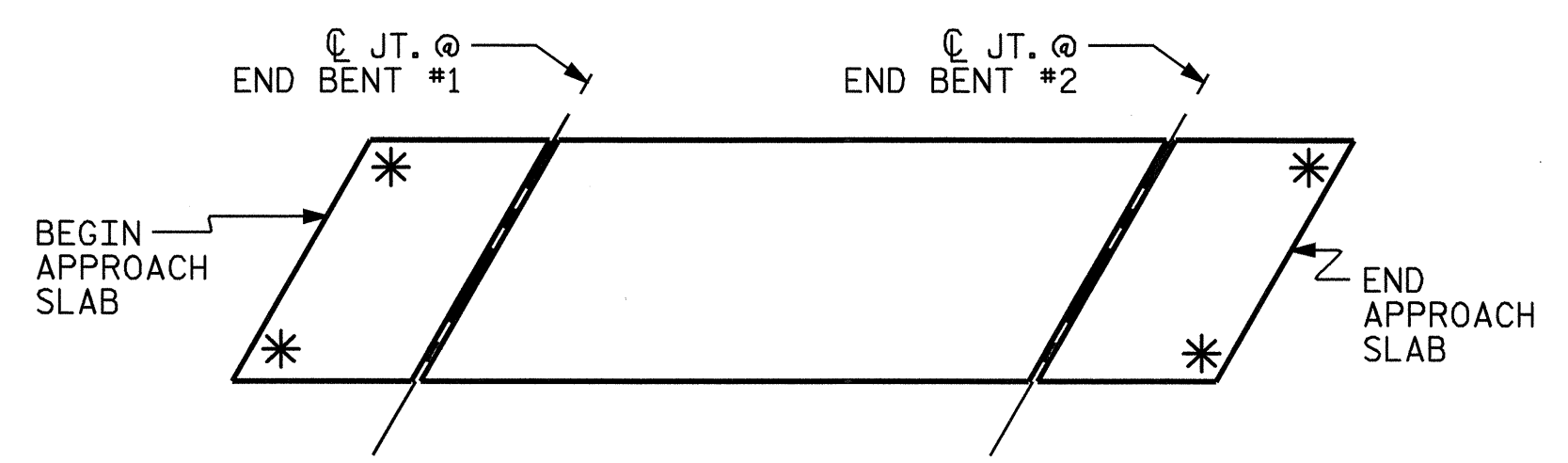
ELEVATION



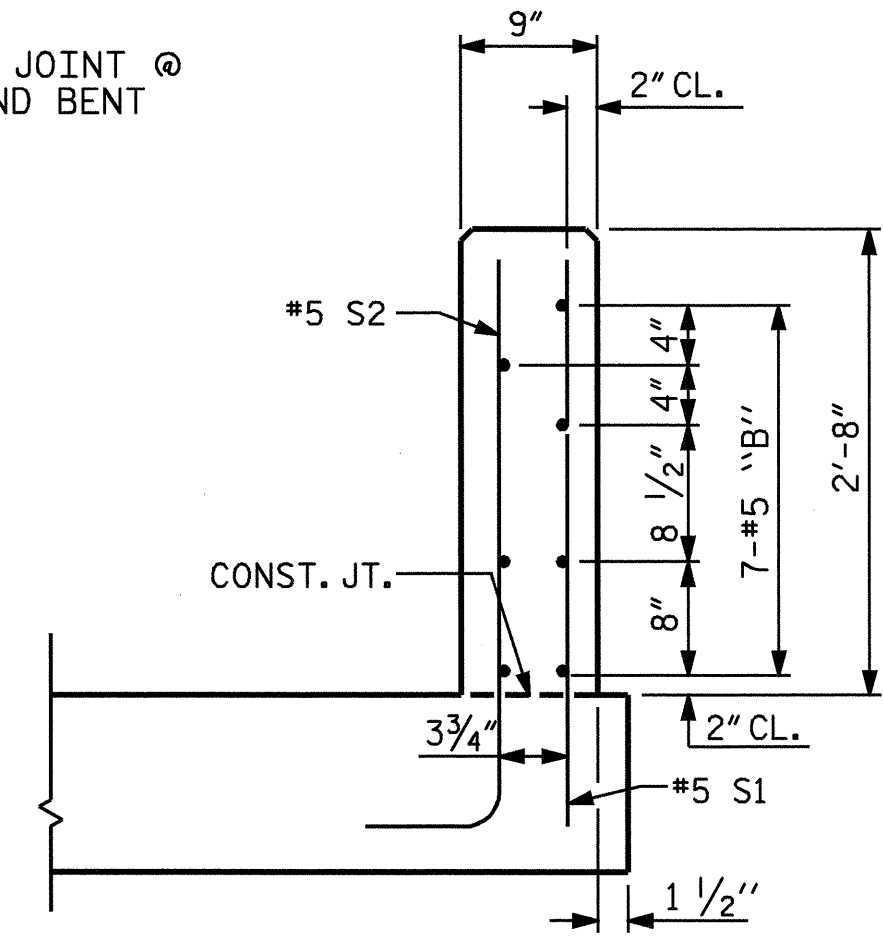
SECTION K-K  
\* ADHESIVELY ANCHORED



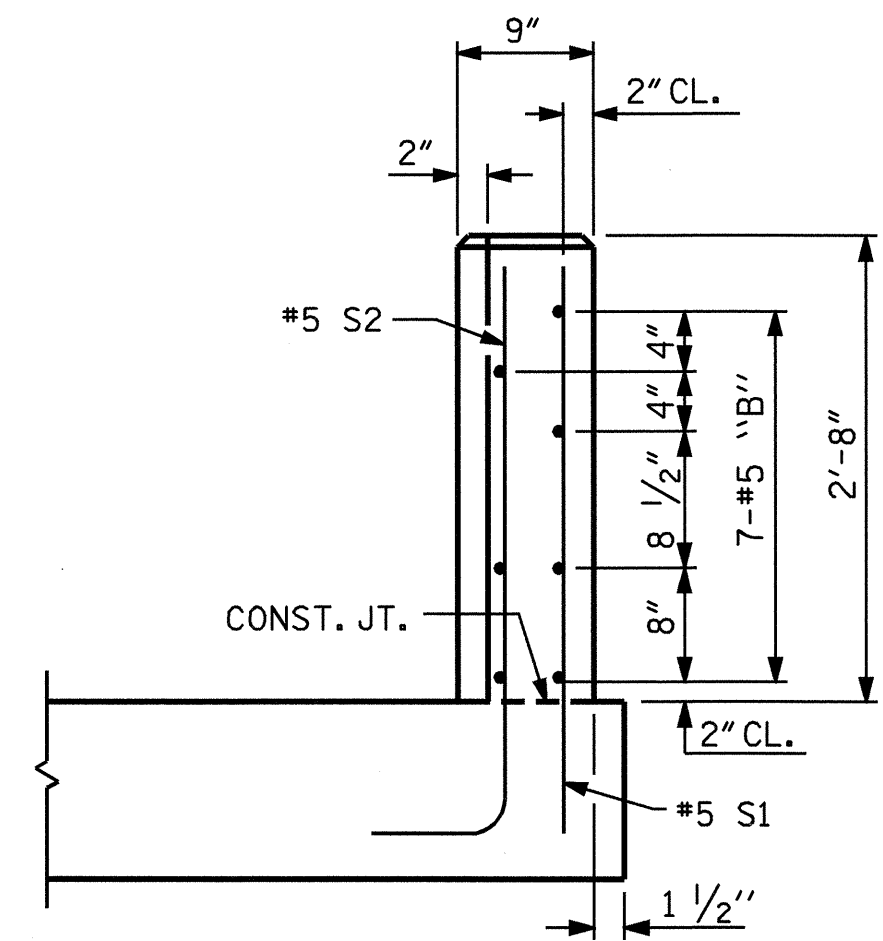
SECTION L-L



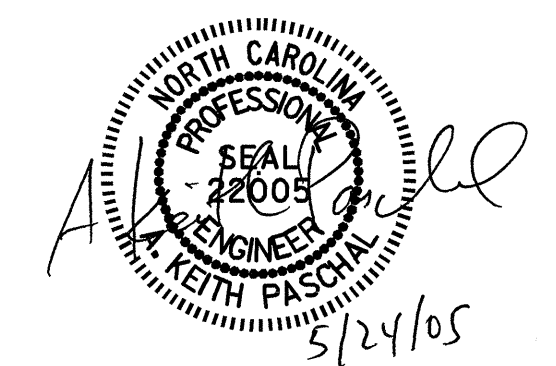
SKETCH SHOWING POINTS OF ATTACHMENT  
\* INDICATES POINTS OF ATTACHMENT



SECTION M-M



END VIEW



PROJECT NO. B-3681  
NASH/EDGEcombe COUNTY  
 STATION: 18+89.64 -L-

SHEET 3 OF 4

STATE OF NORTH CAROLINA DEPARTMENT OF TRANSPORTATION RALEIGH					
STANDARD					
BRIDGE APPROACH SLAB DETAILS FOR FLEXIBLE PAVEMENT WITH BARRIER RAIL					
REVISIONS					
NO.	BY:	DATE:	NO.	BY:	DATE:
1			3		
2			4		
SHEET NO.					S-35
TOTAL SHEETS					36

ASSEMBLED BY: A.M.KEETER DATE: 1/12/05  
 CHECKED BY: K.M.McCAULEY DATE: 3/15/05  
 DRAWN BY: LES 8/01 REV. 5/7/03R RWW/JTE  
 CHECKED BY: RDR 8/01