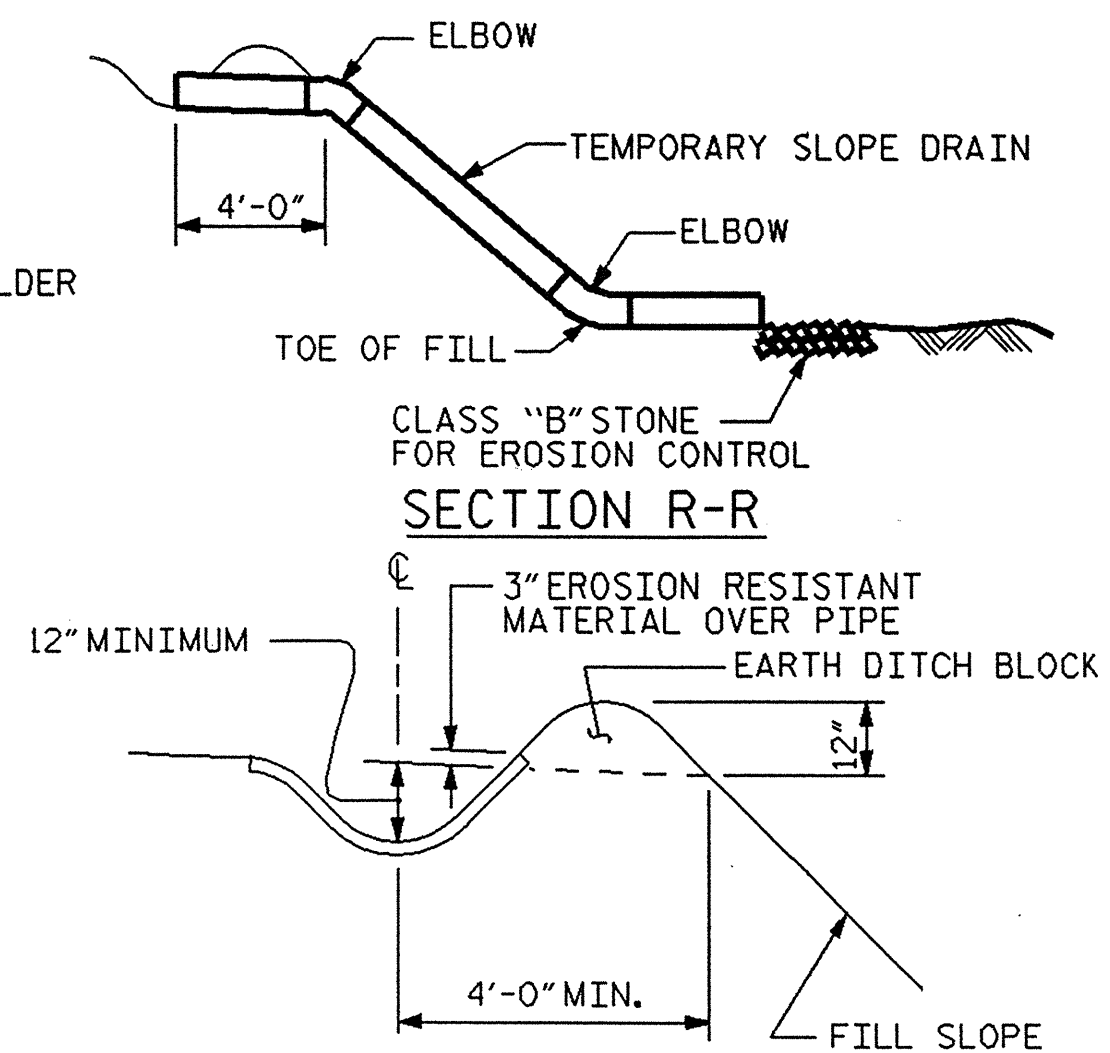
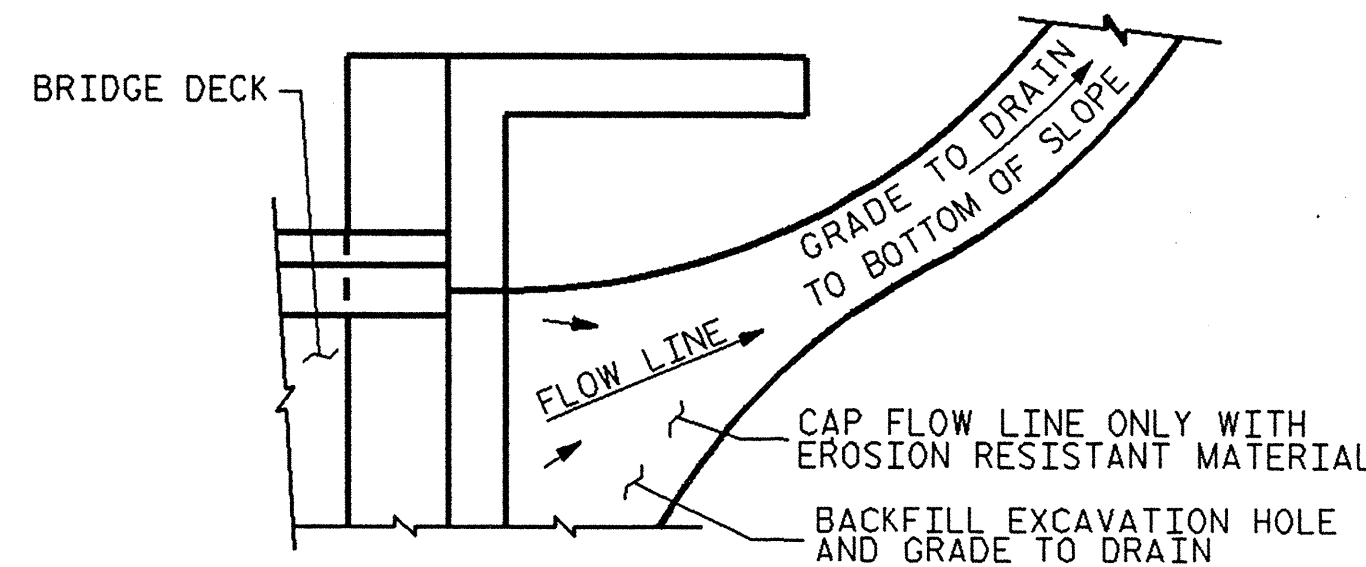


PLAN VIEW



SECTION S-S

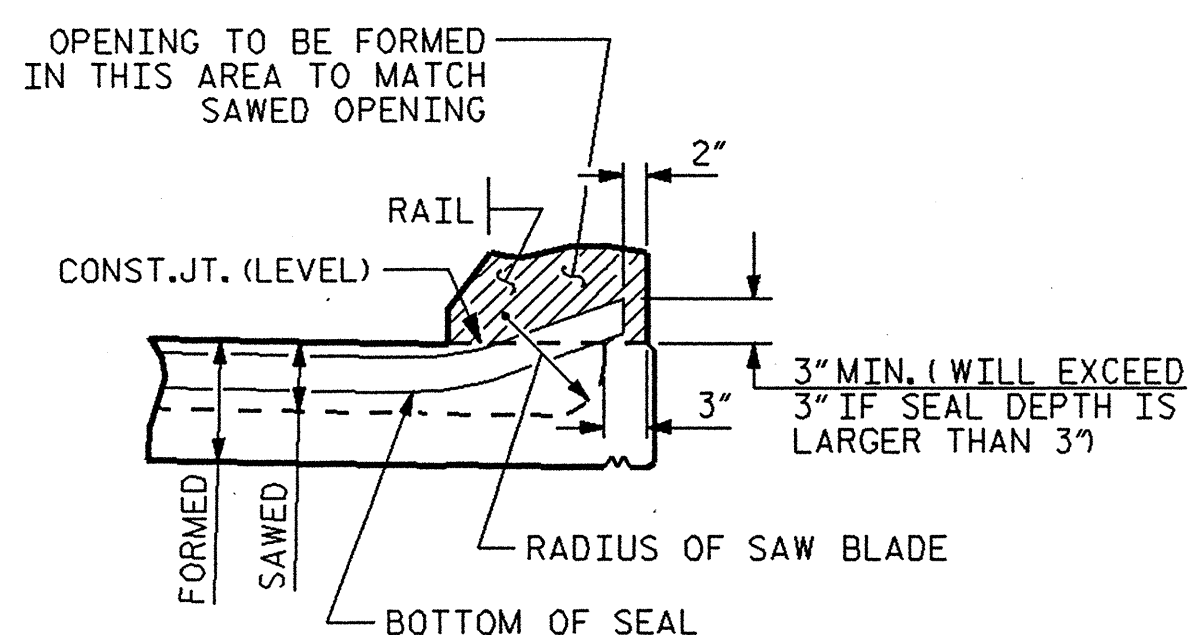


NOTE: IF THE APPROACH SLAB IS NOT CONSTRUCTED IMMEDIATELY AFTER THE BACKFILLING OF THE END BENT EXCAVATION, GRADE TO DRAIN TO THE BOTTOM OF THE SLOPE AND PROVIDE EROSION RESISTANT MATERIAL, SUCH AS FIBERGLASS ROVING OR AS DIRECTED BY THE ENGINEER TO PREVENT SOIL EROSION AND TO PROTECT THE AREA ADJACENT TO THE STRUCTURE. THE CONTRACTOR WILL BE REQUIRED TO REMOVE THESE MATERIALS PRIOR TO CONSTRUCTION OF THE APPROACH SLAB.

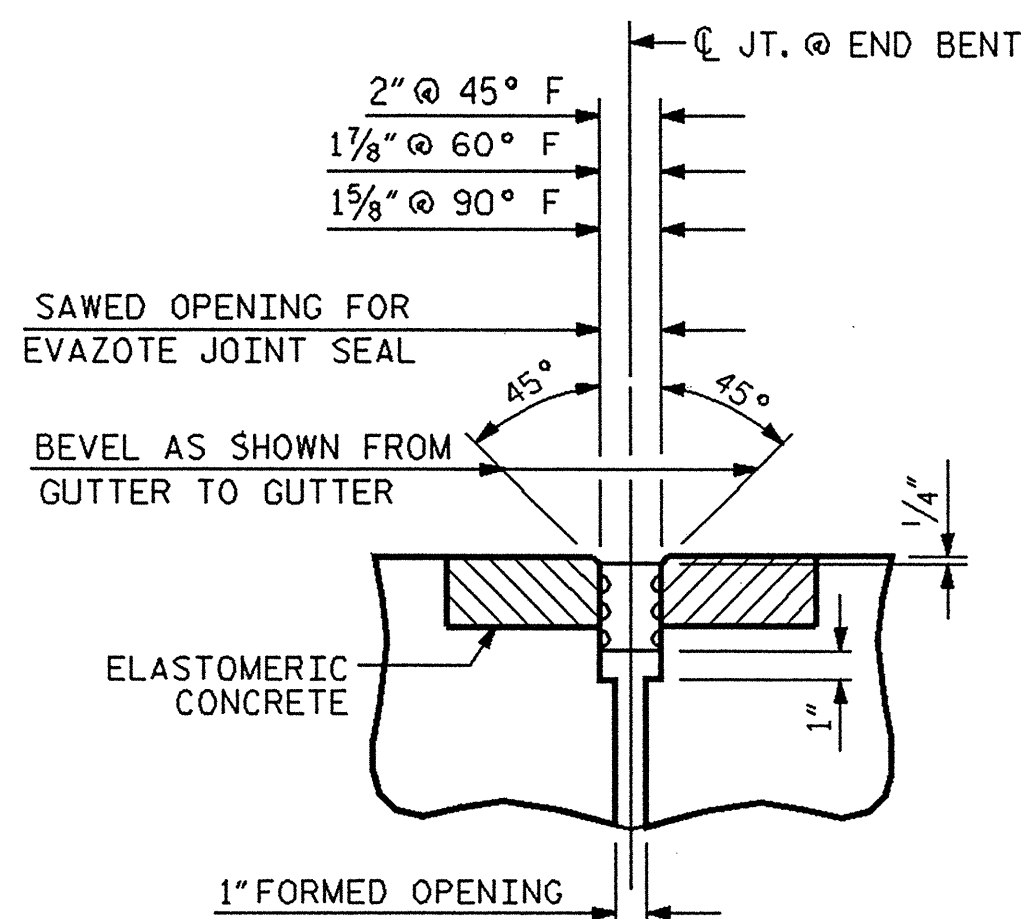
TEMPORARY DRAINAGE DETAIL

**TEMPORARY BERM AND SLOPE DRAIN DETAILS**

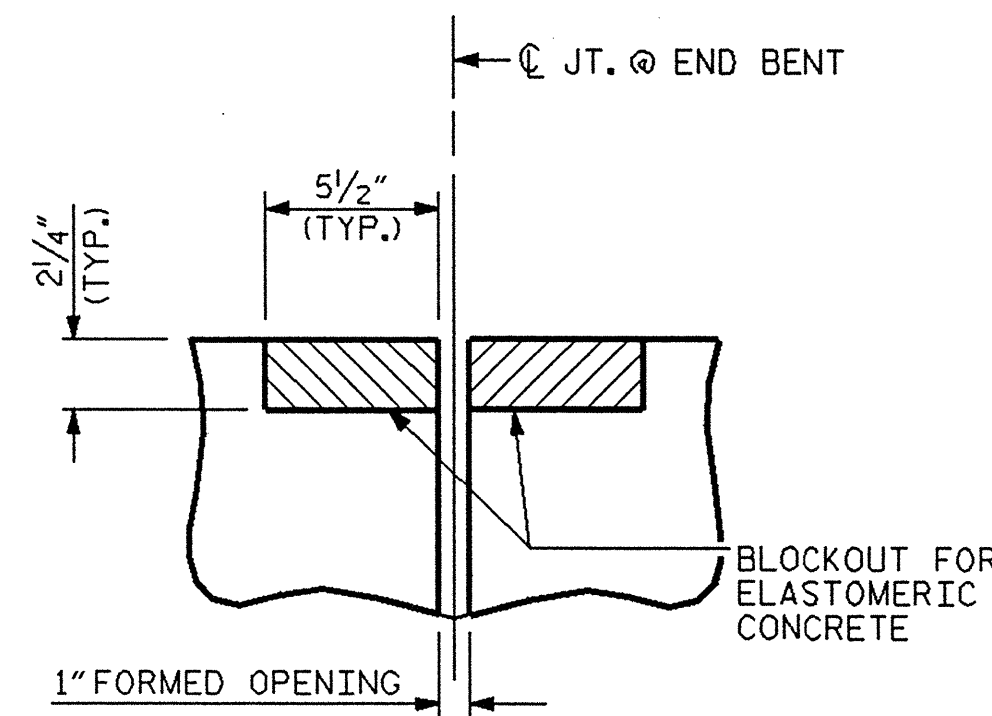
(TO BE USED WHEN SHOULDER BERM GUTTER IS REQUIRED)



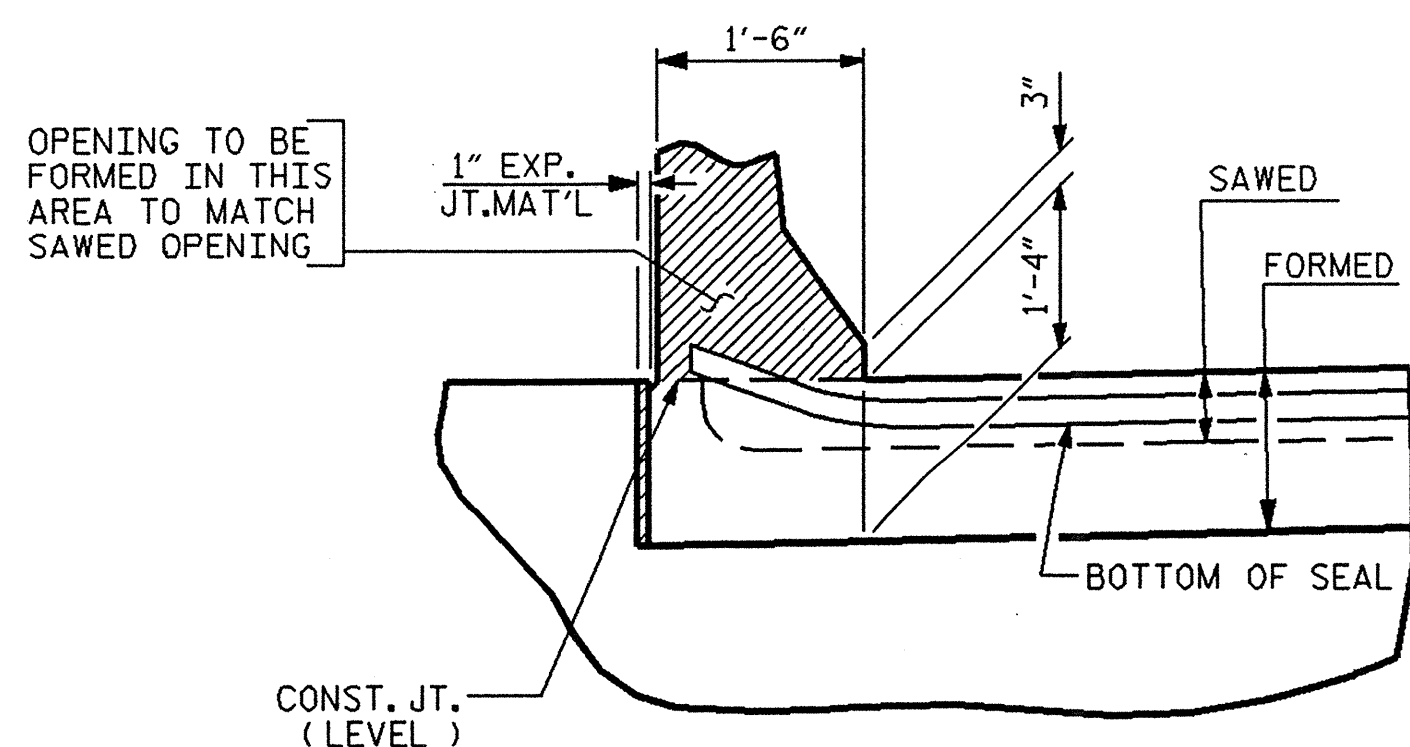
SECTION A-A



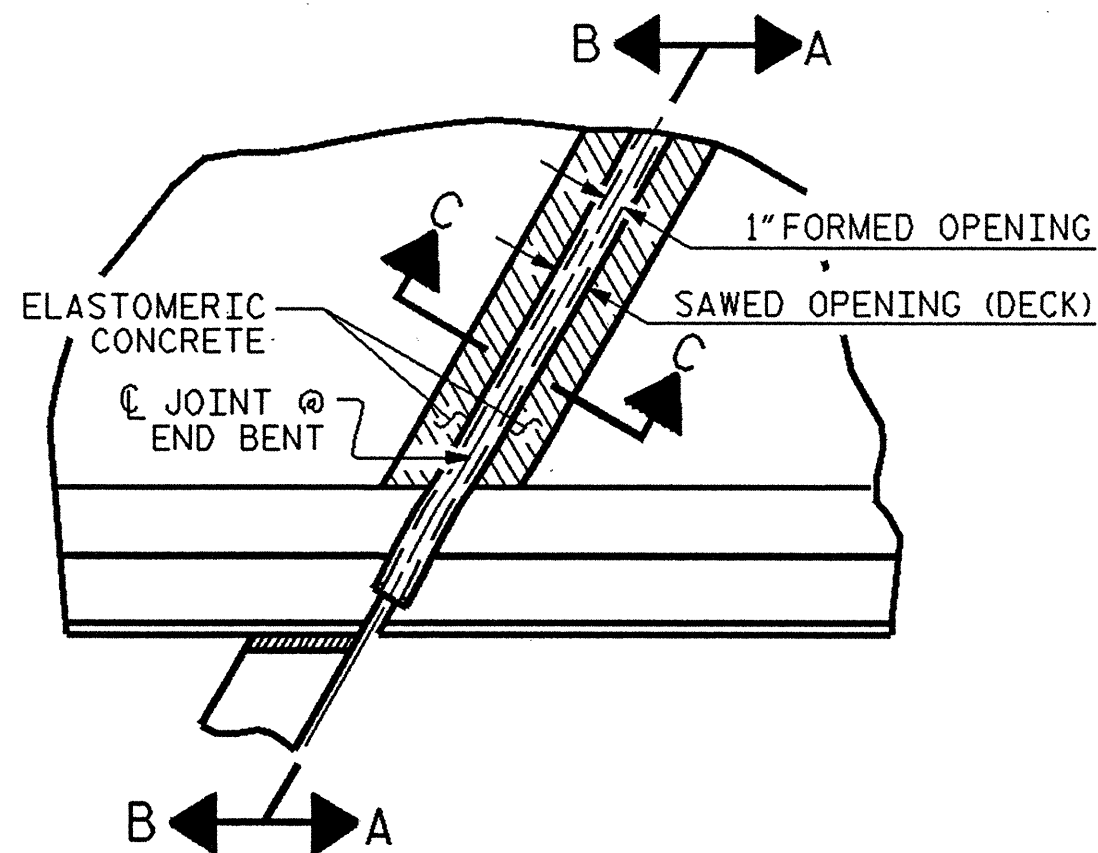
SECTION C-C  
EVAZOTE JOINT SEAL



SECTION C-C  
EVAZOTE JOINT SEAL  
(PRE-SAWED ELASTOMERIC CONCRETE DIMENSIONS)



SECTION B-B



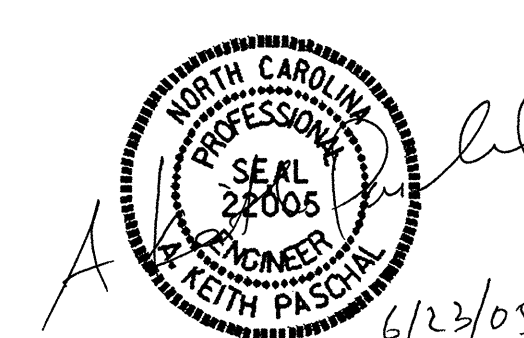
PLAN

**JOINT SEAL DETAILS @ END BENT**

PROJECT NO. B-3681  
NASH/EDGEcombe COUNTY  
STATION: 18+89.64 -L-

SHEET 4 OF 4

STATE OF NORTH CAROLINA  
DEPARTMENT OF TRANSPORTATION  
RALEIGH  
STANDARD  
BRIDGE APPROACH SLAB  
DETAILS FOR FLEXIBLE  
PAVEMENT WITH BARRIER RAIL



ASSEMBLED BY : A.M.KEETER	DATE : 1/12/05
CHECKED BY : K.M.McCAULEY	DATE : 3/15/05
DRAWN BY : FCJ 11/88	REV. 8/16/99 MAB/LES
CHECKED BY : ARB 11/88	REV. 10/17/00 RWW/LES
	REV. 5/7/03 RWW/JTE

1988					
SHEET NO. S-36					
TOTAL SHEETS 36					
REVISIONS					
NO.	BY:	DATE:	NO.	BY:	DATE:
1			3		
2			4		

STD. NO. BAS10