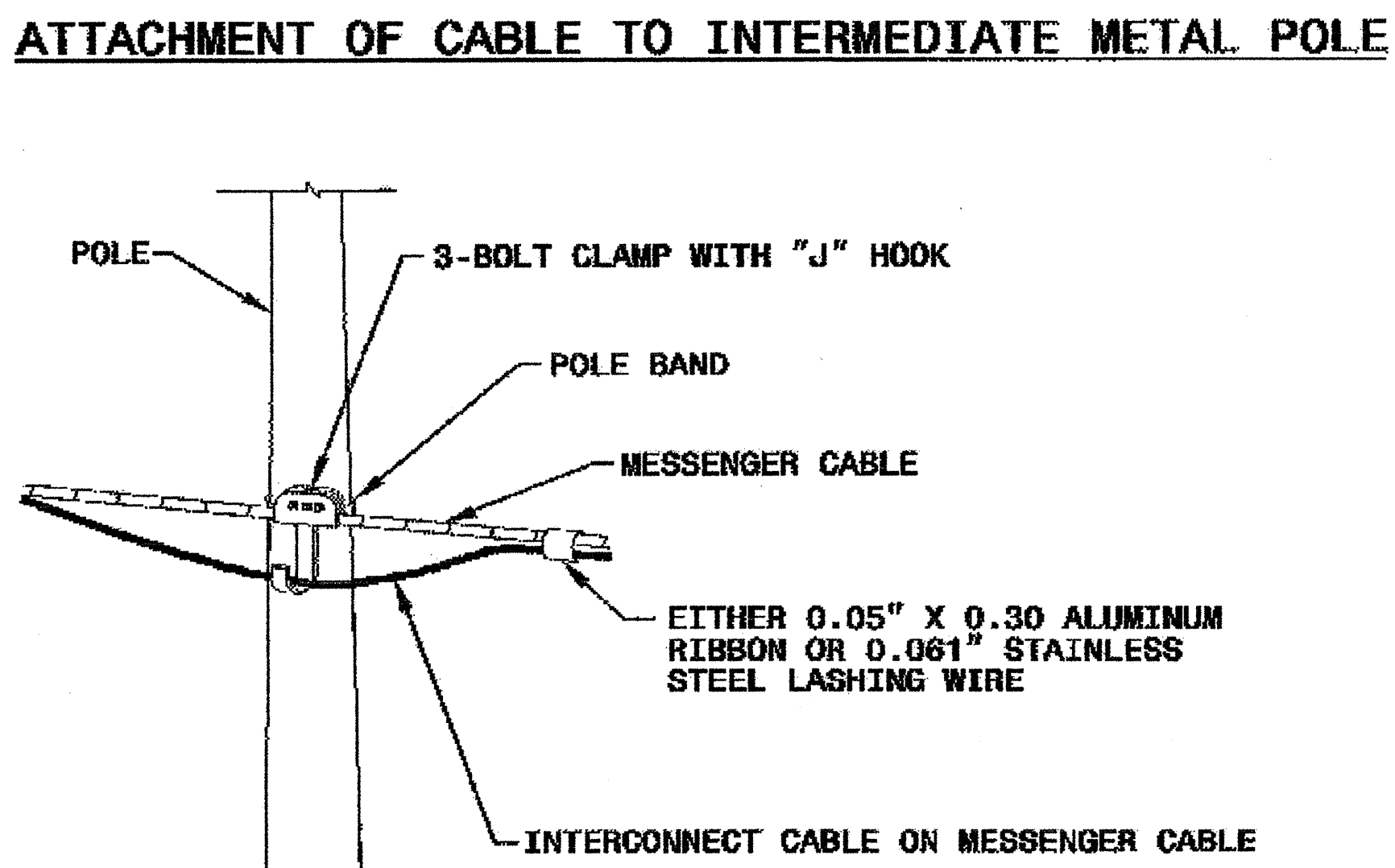
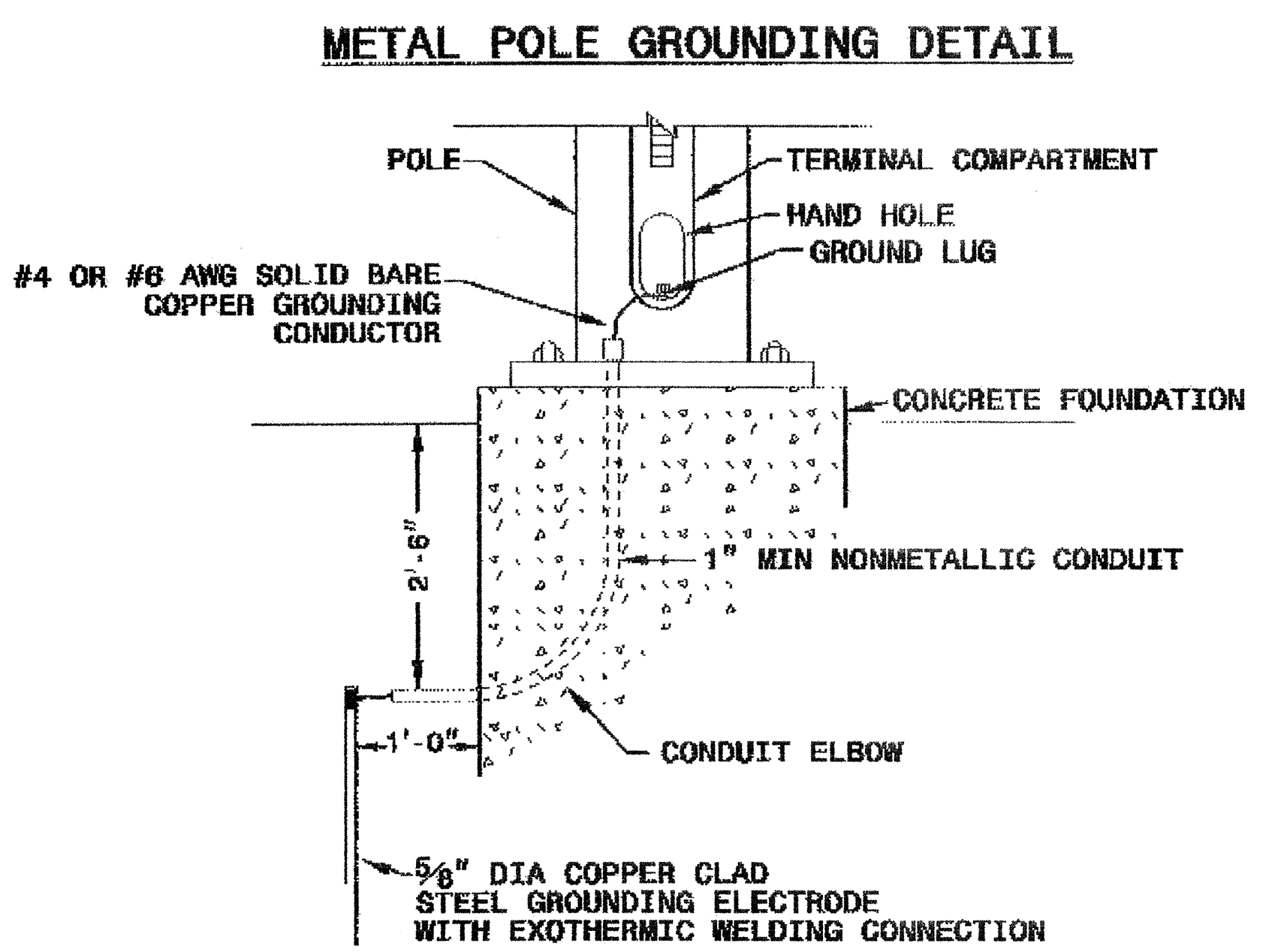
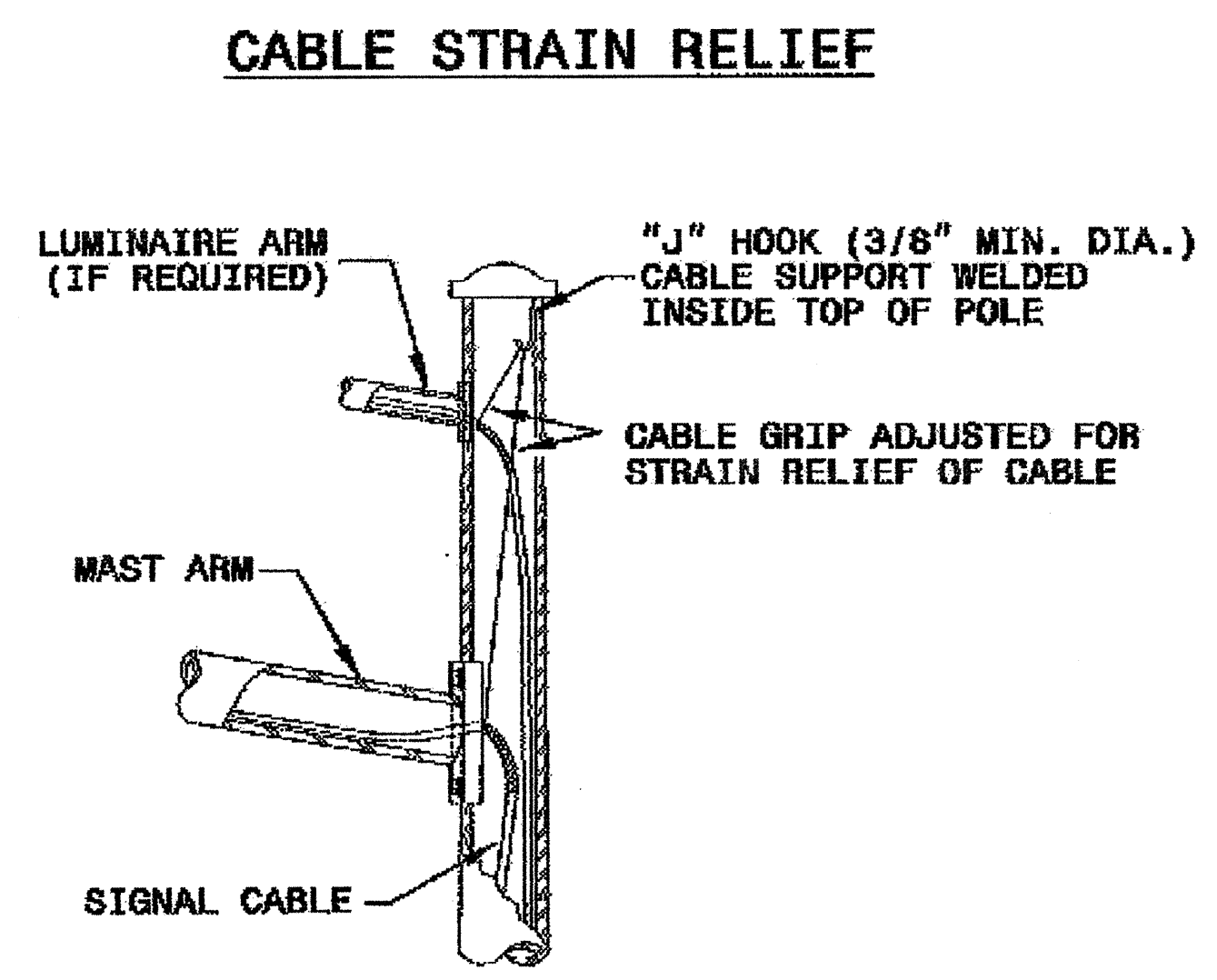
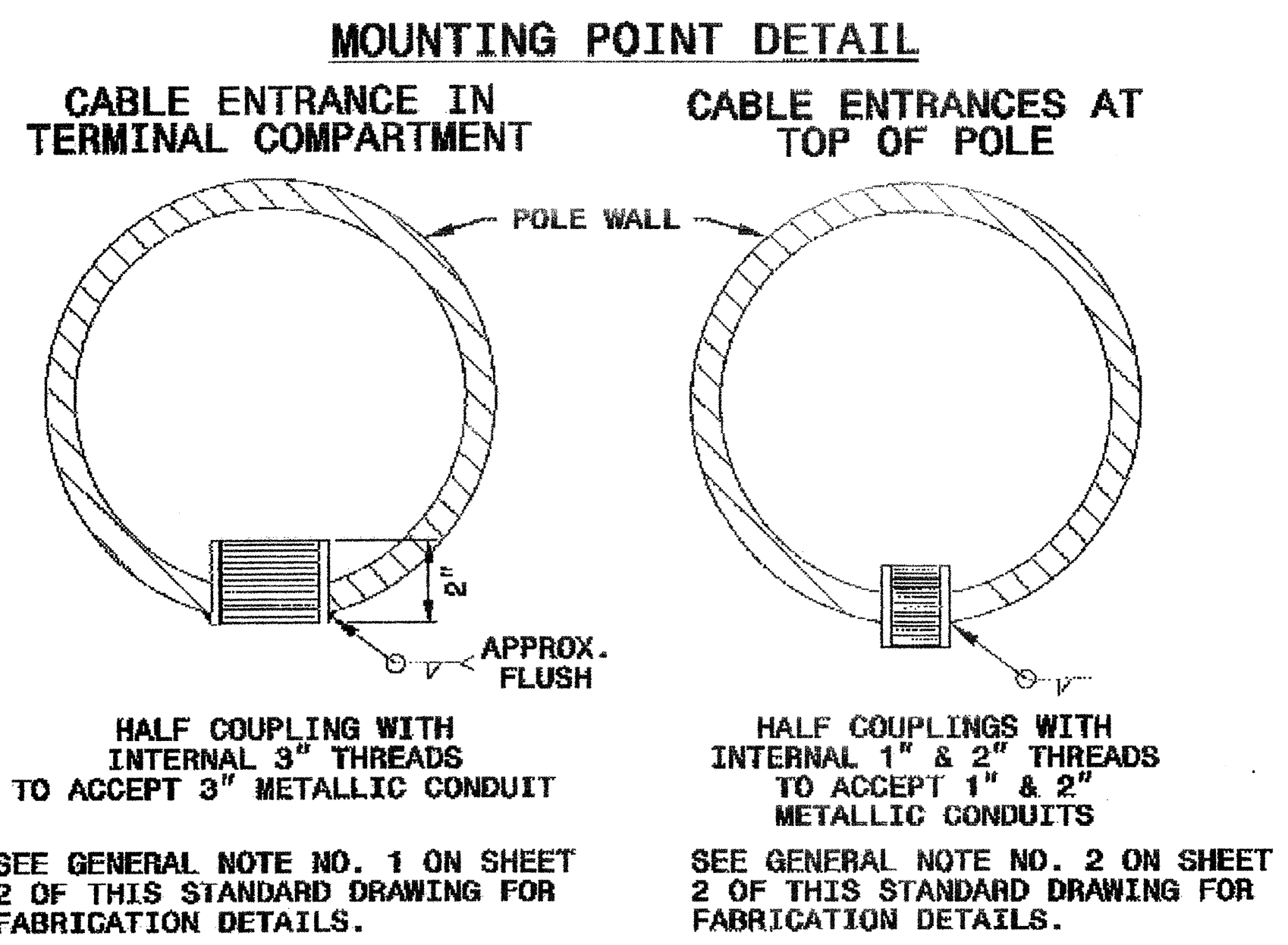


STATE OF NORTH CAROLINA
DEPT. OF TRANSPORTATION
DIVISION OF HIGHWAYS
RALEIGH, N.C.

9-03

ENGLISH STANDARD DRAWING FOR
METAL POLES
MISCELLANEOUS DETAILS

SHEET 3 OF 3
1740.01



STATE OF NORTH CAROLINA
DEPT. OF TRANSPORTATION
DIVISION OF HIGHWAYS
RALEIGH, N.C.

9-03

ENGLISH STANDARD DRAWING FOR
METAL POLES
MISCELLANEOUS DETAILS

SHEET 3 OF 3
1740.01

<p>Structural Engineer</p> <p>D. Sackey 9/19/03</p>	<p>Electrical Engineer</p> <p>Milton Dea 9/20/03</p>
---	--

Standard Drawings
Traffic Management and Signal Systems Unit
122 N. McDowell St., Raleigh, NC 27603

See Plate for Title

Original: 2002 Standards

10-SEP-2005 14:27
 H:\projects\1740-01\1740-01\1740-01.dwg
 1740-01.dwg
 1740-01.dwg
 1740-01.dwg