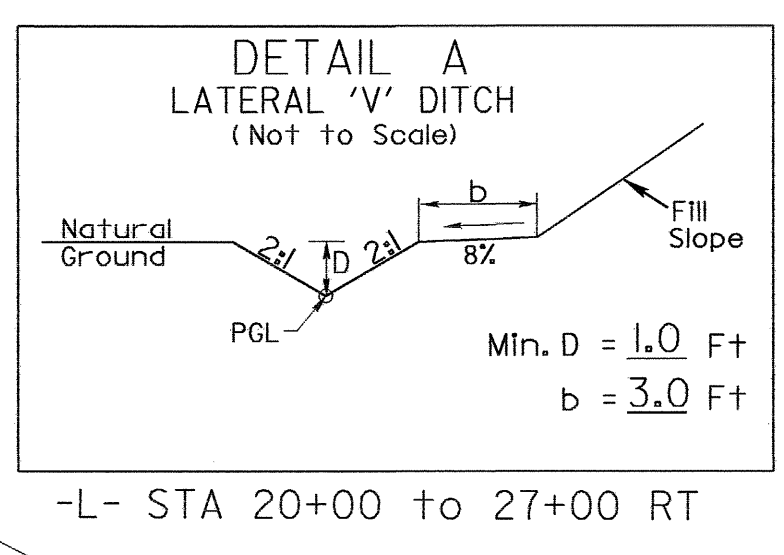
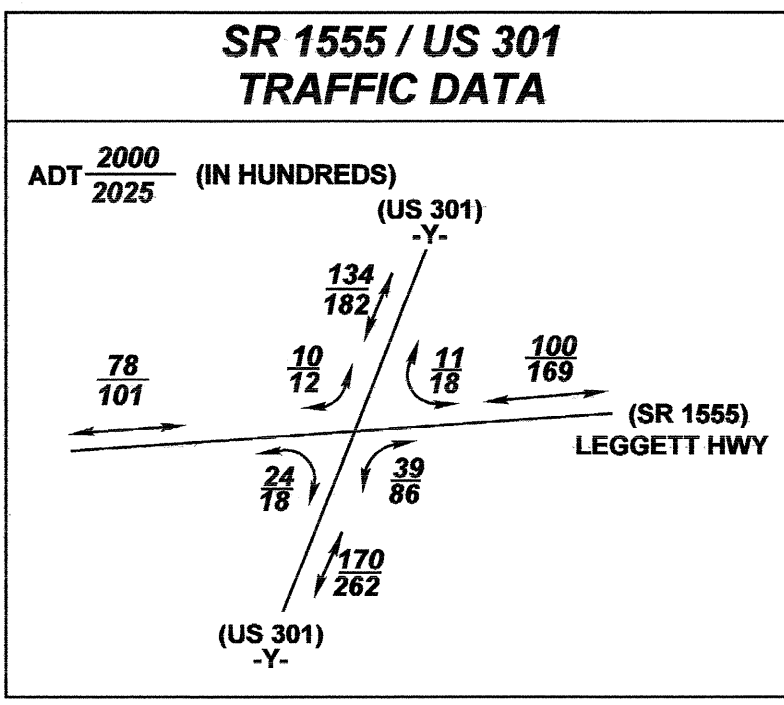
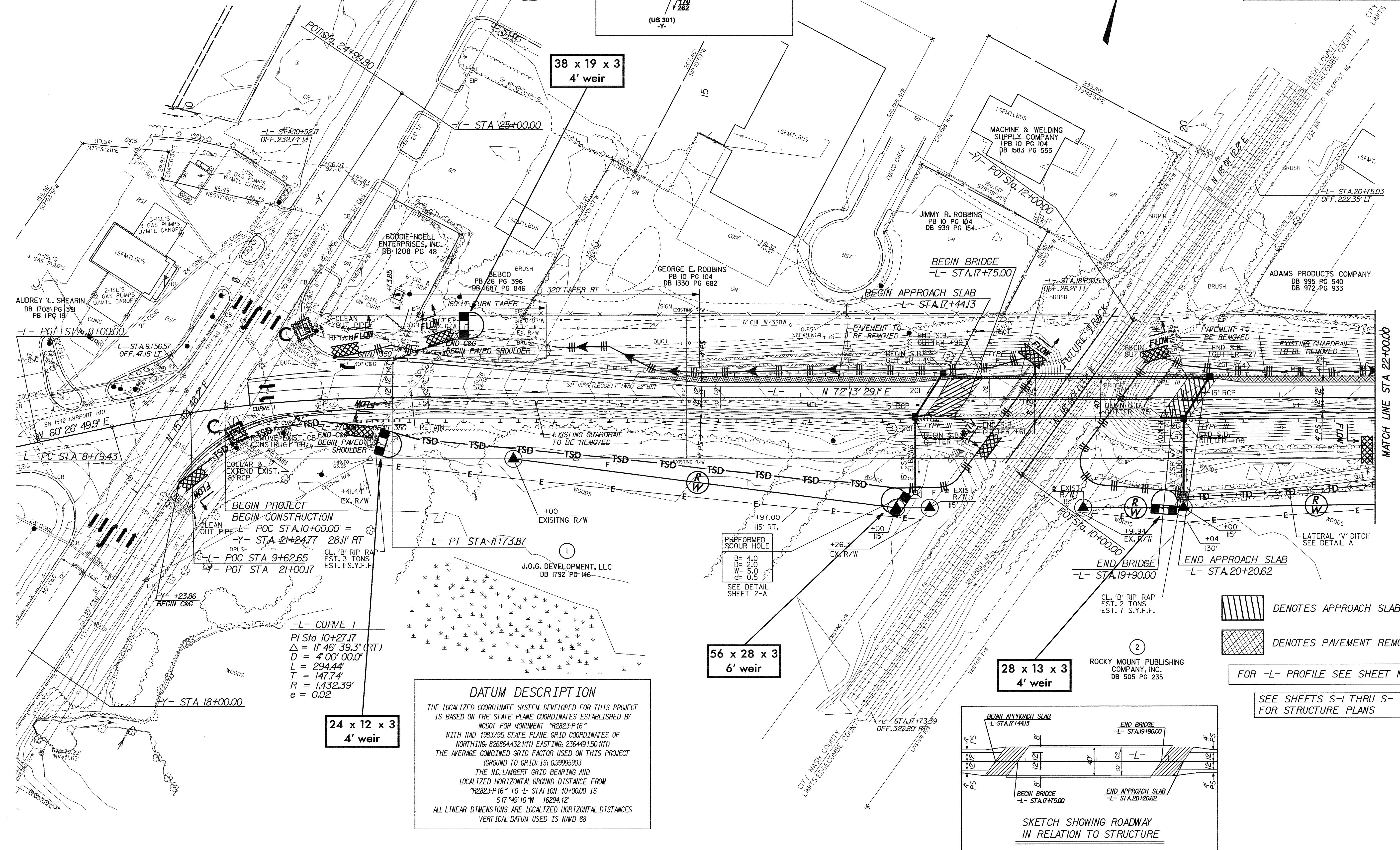


NOTE:
PLACE TEMPORARY ROCK SEDIMENT DAMS TYPE - B
AND TEMPORARY ROCK SILT CHECKS TYPE - A AT
DRAINAGE OUTLETS.

CLEARING AND GRUBBING
EROSION CONTROL FOR
CONSTRUCTION SHEET 4



PROJECT REFERENCE NO. B-3681	SHEET NO. EC-3/CONST.4
R/W SHEET NO.	HYDRAULICS ENGINEER
ROADWAY DESIGN ENGINEER	



BEGIN PROJECT
BEGIN CONSTRUCTION
L- POC STA.10+00.00 =
Y- STA.21+24.77 28.11' RT
L- POC STA 9+62.65
Y- POT STA 21+00.17

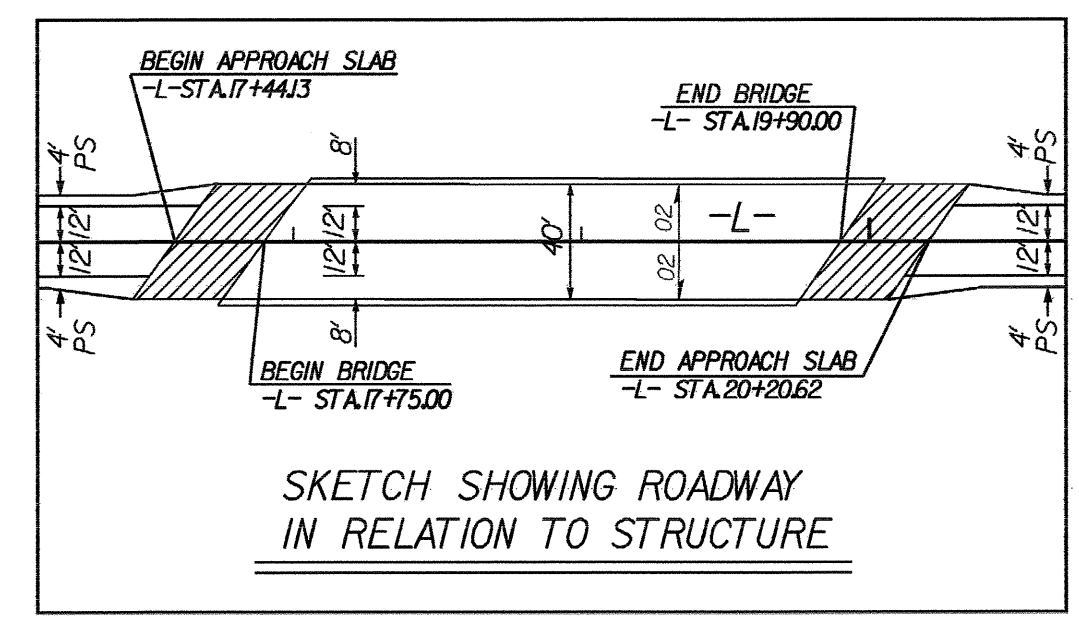
-L- CURVE 1
PI Sta 10+27.17
 $\Delta = 11' 46'' 39.3''$ (RT)
D = 4' 00'' 00.0''
L = 294.44'
T = 147.74'
R = 1,432.39'
e = 0.02

DATUM DESCRIPTION
THE LOCALIZED COORDINATE SYSTEM DEVELOPED FOR THIS PROJECT IS BASED ON THE STATE PLANE COORDINATES ESTABLISHED BY NCDOT FOR MONUMENT "R2823-P16" WITH NAD 1983/95 STATE PLANE GRID COORDINATES OF NORTHING: 826864.4321(11) EASTING: 236449.1501(11) THE AVERAGE COMBINED GRID FACTOR USED ON THIS PROJECT (GROUND TO GRID) IS: 0.99995903 THE N.C. LAMBERT GRID BEARING AND LOCALIZED HORIZONTAL GROUND DISTANCE FROM "R2823-P16" TO -L- STATION 10+00.00 IS S17°49'10"W 16294.12' ALL LINEAR DIMENSIONS ARE LOCALIZED HORIZONTAL DISTANCES VERTICAL DATUM USED IS NAVD 88

DENOTES APPROACH SLAB
 DENOTES PAVEMENT REMOVAL

FOR -L- PROFILE SEE SHEET NO.6

SEE SHEETS S-1 THRU S- FOR STRUCTURE PLANS



MATCH LINE STA 22+00.00