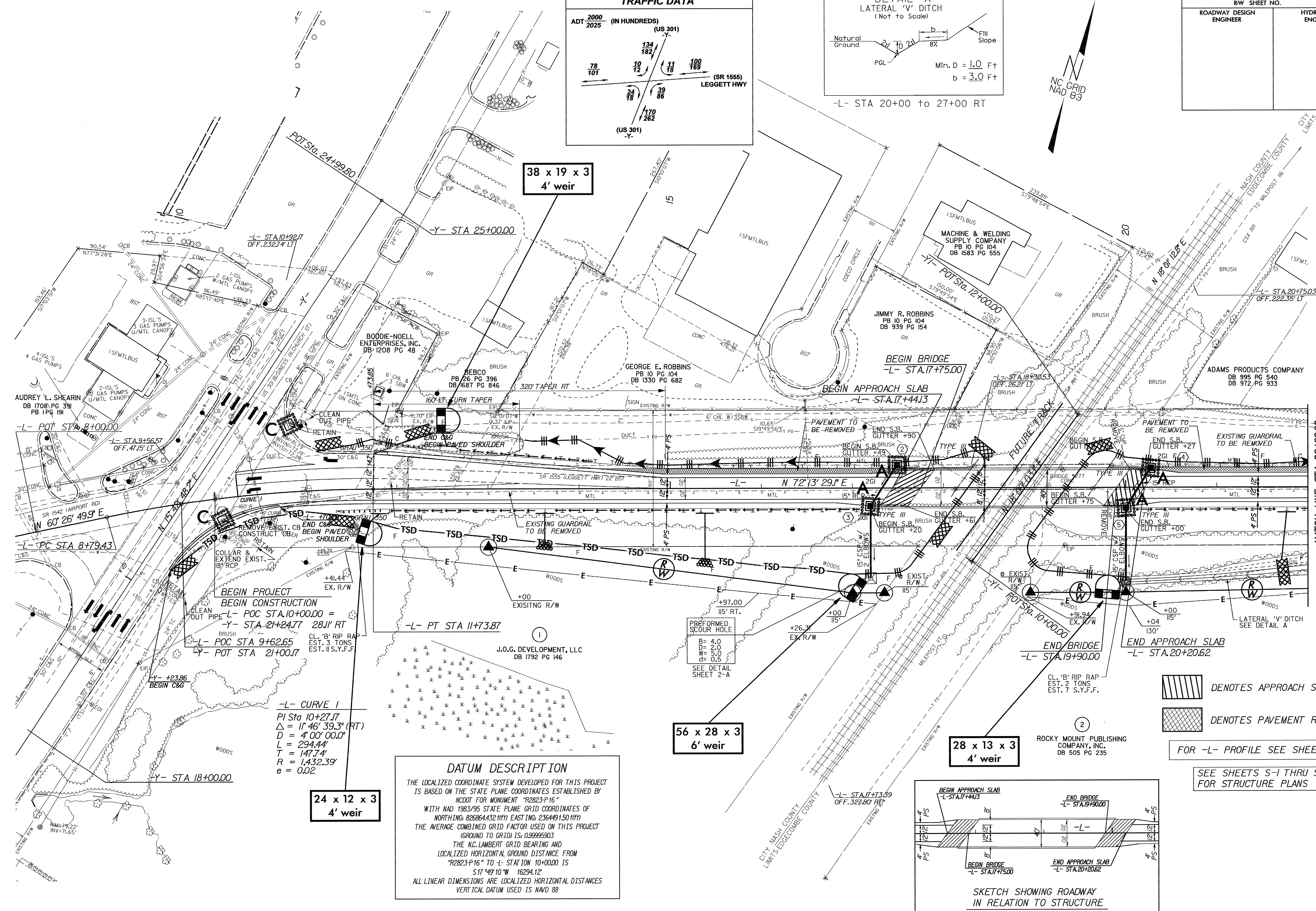
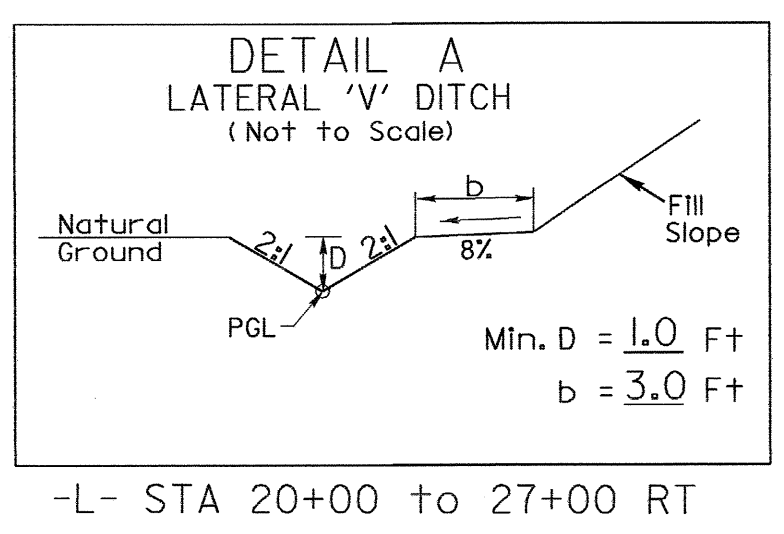
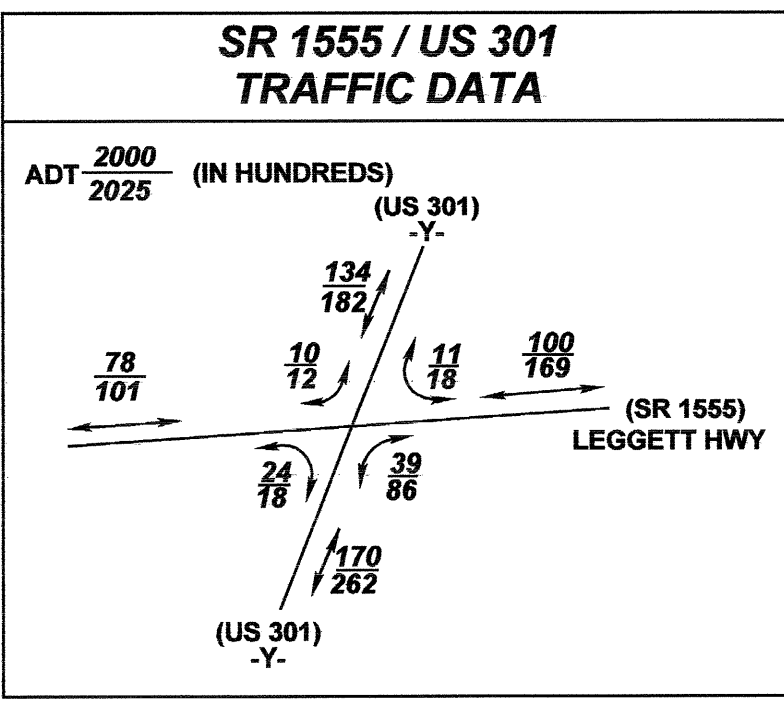


PROJECT REFERENCE NO.	SHEET NO.
B-3681	EC-5/CONST.4
R/W SHEET NO.	
ROADWAY DESIGN ENGINEER	HYDRAULICS ENGINEER



**DATUM DESCRIPTION**  
THE LOCALIZED COORDINATE SYSTEM DEVELOPED FOR THIS PROJECT IS BASED ON THE STATE PLANE COORDINATES ESTABLISHED BY NCDOT FOR MONUMENT "R2823-P16" WITH NAD 1983/95 STATE PLANE GRID COORDINATES OF NORTHING: 826864432.1111 EASTING: 236449.1501111 THE AVERAGE COMBINED GRID FACTOR USED ON THIS PROJECT (GROUND TO GRID) IS: 0.99995903 THE N.C. LAMBERT GRID BEARING AND LOCALIZED HORIZONTAL GROUND DISTANCE FROM "R2823-P16" TO -L- STATION 10+00.00 IS S17°49'10"W 16294.12' ALL LINEAR DIMENSIONS ARE LOCALIZED HORIZONTAL DISTANCES VERTICAL DATUM USED IS NAVD 88

**BEGIN PROJECT**  
BEGIN CONSTRUCTION  
-L- POC STA.10+00.00 =  
-Y- STA.21+24.77 28.11' RT  
-L- POC STA.9+62.65  
-Y- POT STA.21+00.17

-L- CURVE 1  
PI Sta 10+27.17  
Δ = 11° 46' 39.3" (RT)  
D = 4' 00' 00.0"  
L = 294.44'  
T = 147.74'  
R = 1,432.39'  
e = 0.02

DENOTES APPROACH SLAB  
 DENOTES PAVEMENT REMOVAL  
FOR -L- PROFILE SEE SHEET NO.6  
SEE SHEETS S-1 THRU S-7 FOR STRUCTURE PLANS

