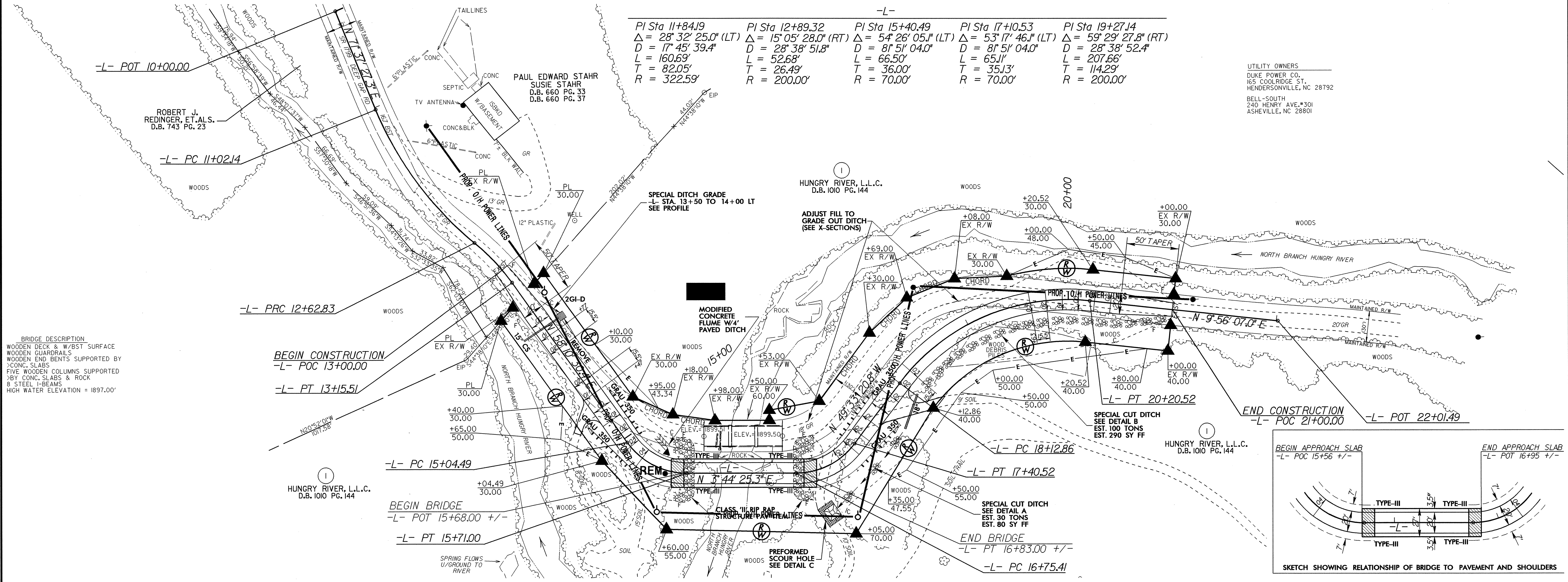


UTILITIES BY OTHERS

NOTE:
ALL PROPOSED UTILITY WORK
SHOWN ON THIS SHEET WILL
BE DONE BY OTHERS

8/17/99



PI Sta 11+84.19	PI Sta 12+89.32	PI Sta 15+40.49	PI Sta 17+10.53	PI Sta 19+27.14
$\Delta = 28^{\circ} 32' 25.0''$ (LT)	$\Delta = 15^{\circ} 05' 28.0''$ (RT)	$\Delta = 54^{\circ} 26' 05.1''$ (LT)	$\Delta = 53^{\circ} 17' 46.1''$ (LT)	$\Delta = 59^{\circ} 29' 27.8''$ (RT)
$D = 17^{\circ} 45' 39.4''$	$D = 28^{\circ} 38' 51.8''$	$D = 81^{\circ} 51' 04.0''$	$D = 81^{\circ} 51' 04.0''$	$D = 28^{\circ} 38' 52.4''$
$L = 160.69'$	$L = 52.68'$	$L = 66.50'$	$L = 65.11'$	$L = 207.66'$
$T = 82.05'$	$T = 26.49'$	$T = 36.00'$	$T = 35.13'$	$T = 114.29'$
$R = 322.59'$	$R = 200.00'$	$R = 70.00'$	$R = 70.00'$	$R = 200.00'$

UTILITY OWNERS
DUKE POWER CO.
165 COOLIDGE ST.
HENDERSONVILLE, NC 28792
BELL-SOUTH
240 HENRY AVE.#301
ASHEVILLE, NC 28801

BRIDGE DESCRIPTION
WOODEN DECK & W/BST SURFACE
WOODEN GUARDRAILS
WOODEN END BENTS SUPPORTED BY
CONC. SLABS
FIVE WOODEN COLUMNS SUPPORTED
BY CONC. SLABS & ROCK
8 STEEL I-BEAMS
HIGH WATER ELEVATION = 1897.00'

BEGIN CONSTRUCTION
-L- POC 13+00.00

-L- PT 13+15.51

-L- PC 15+04.49

BEGIN BRIDGE
-L- POT 15+68.00 +/-

-L- PT 15+71.00

-L- PC 18+12.86

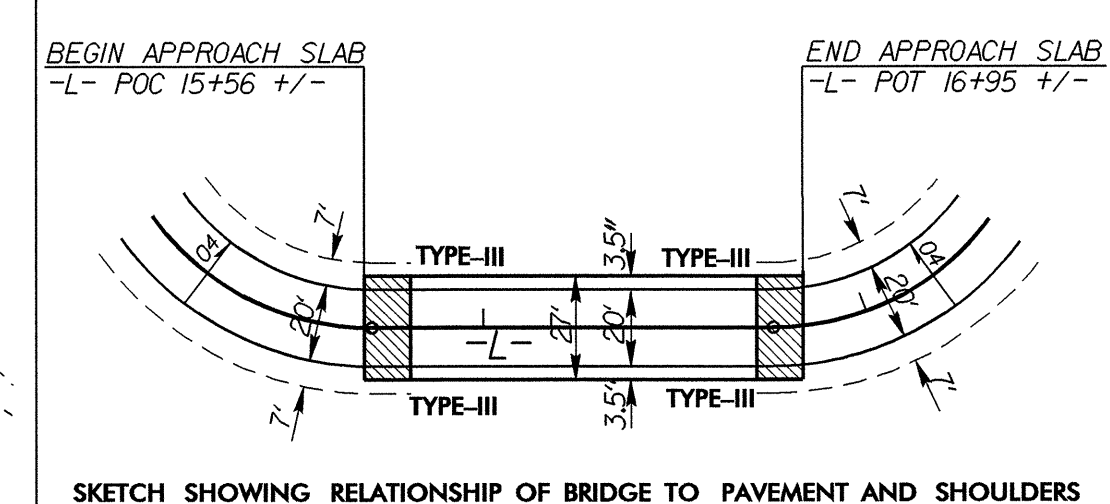
-L- PT 17+40.52

END BRIDGE
-L- PT 16+83.00 +/-

-L- PC 16+75.41

END CONSTRUCTION
-L- POC 21+00.00

-L- POT 22+01.49



SKETCH SHOWING RELATIONSHIP OF BRIDGE TO PAVEMENT AND SHOULDERS

21-JAN-2005 15:53
p:\h\p\c\j\ec\ts\B3666\B3666(04).ut.U01_psh.dgn