

PLAN

| TOP OF PILE ELEVATIONS |           |
|------------------------|-----------|
| PILE                   | ELEVATION |
| 1                      | 1895.561  |
| 2                      | 1895.891  |
| 3                      | 1896.221  |
| 4                      | 1896.551  |
| 5                      | 1896.881  |

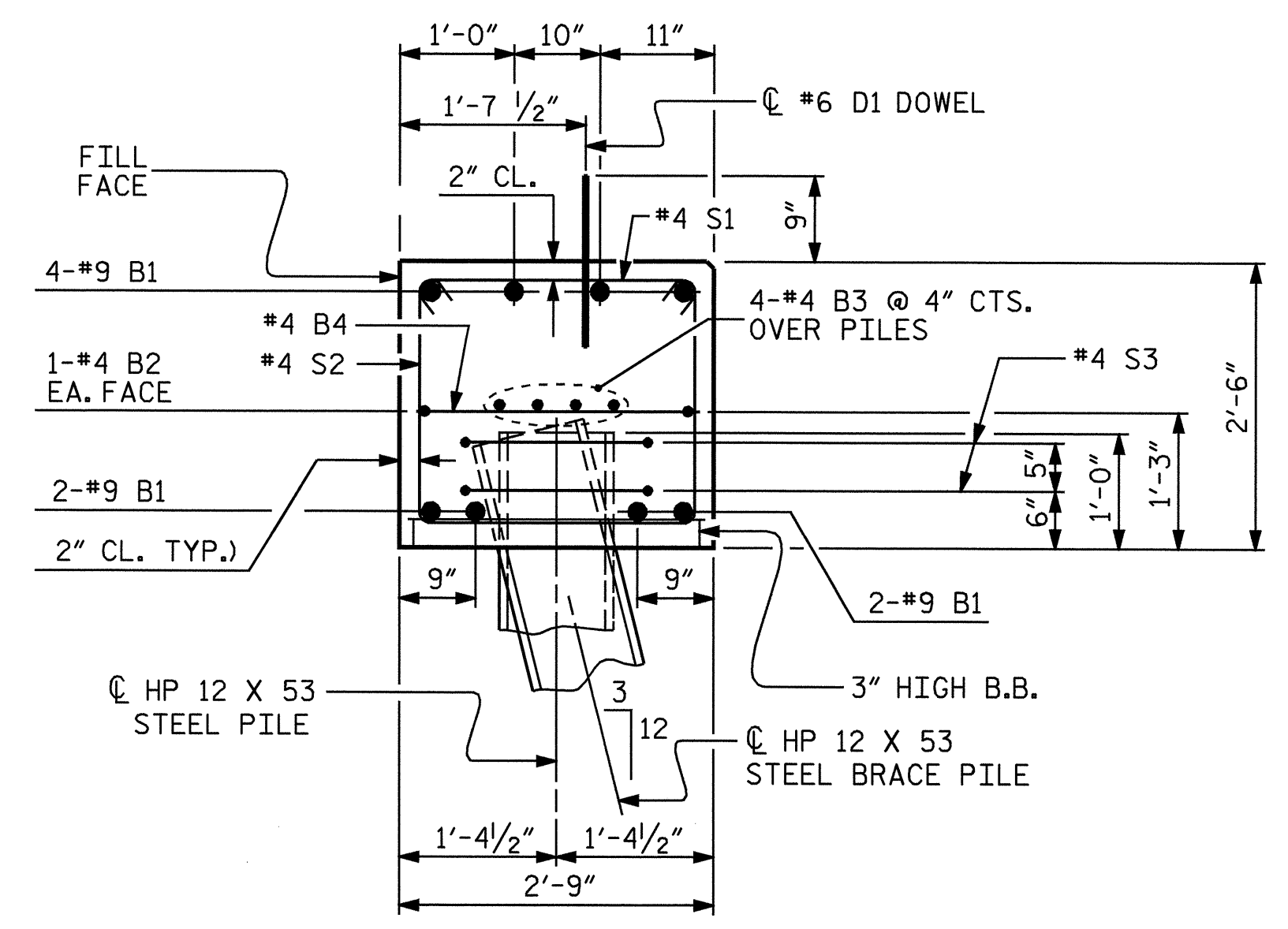
**NOTES:**

STIRRUPS IN CAP MAY BE SHIFTED AS NECESSARY TO CLEAR DOWELS.

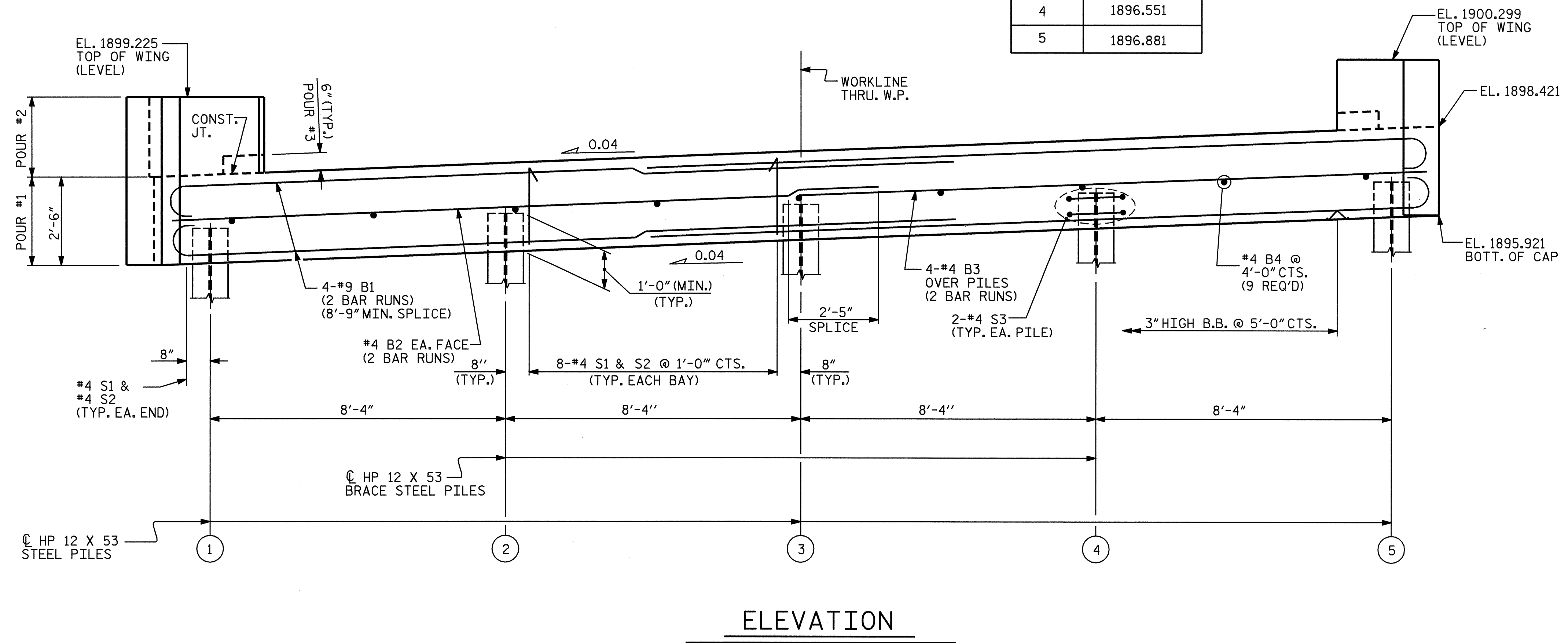
FOR PILE SPLICE DETAILS, SEE SHEET 3 OF 3.

THE CONTRACTOR SHALL PROVIDE FOR INSTALLATION OF THE 4" DIAMETER DRAIN PIPE THROUGH THE WING WALL AS REQUIRED FOR REINFORCED BRIDGE APPROACH FILLS. SEE THE ROADWAY PLANS. REINFORCING STEEL IN THE WING WALL MAY BE SHIFTED AS NECESSARY TO CLEAR THE DRAIN PIPE.

THE LATERAL GUIDES AT EACH END OF THE CAP SHALL NOT BE POURED UNTIL AFTER CORED SLAB UNITS ARE IN PLACE.



SECTION THRU CAP



ELEVATION

PROJECT NO. B-3666  
HENDERSON COUNTY  
 STATION: 16+25.50 -L-  
 SHEET 1 OF 3

STATE OF NORTH CAROLINA  
 DEPARTMENT OF TRANSPORTATION  
 RALEIGH

SUBSTRUCTURE  
 END BENT #1

| REVISIONS |     |       |     |     |       | SHEET NO.    |
|-----------|-----|-------|-----|-----|-------|--------------|
| NO.       | BY: | DATE: | NO. | BY: | DATE: | S-8          |
| 1         |     |       | 3   |     |       | TOTAL SHEETS |
| 2         |     |       | 4   |     |       | 21           |



DRAWN BY : QT NGUYEN/CRY DATE : 12-04  
 CHECKED BY : LL MURPHY DATE : 02/05

07-JUN-2005 09:28  
 R:\STRUCTURE\FINALP2\B3666E.sd.E1.01.dgn  
 dahodge