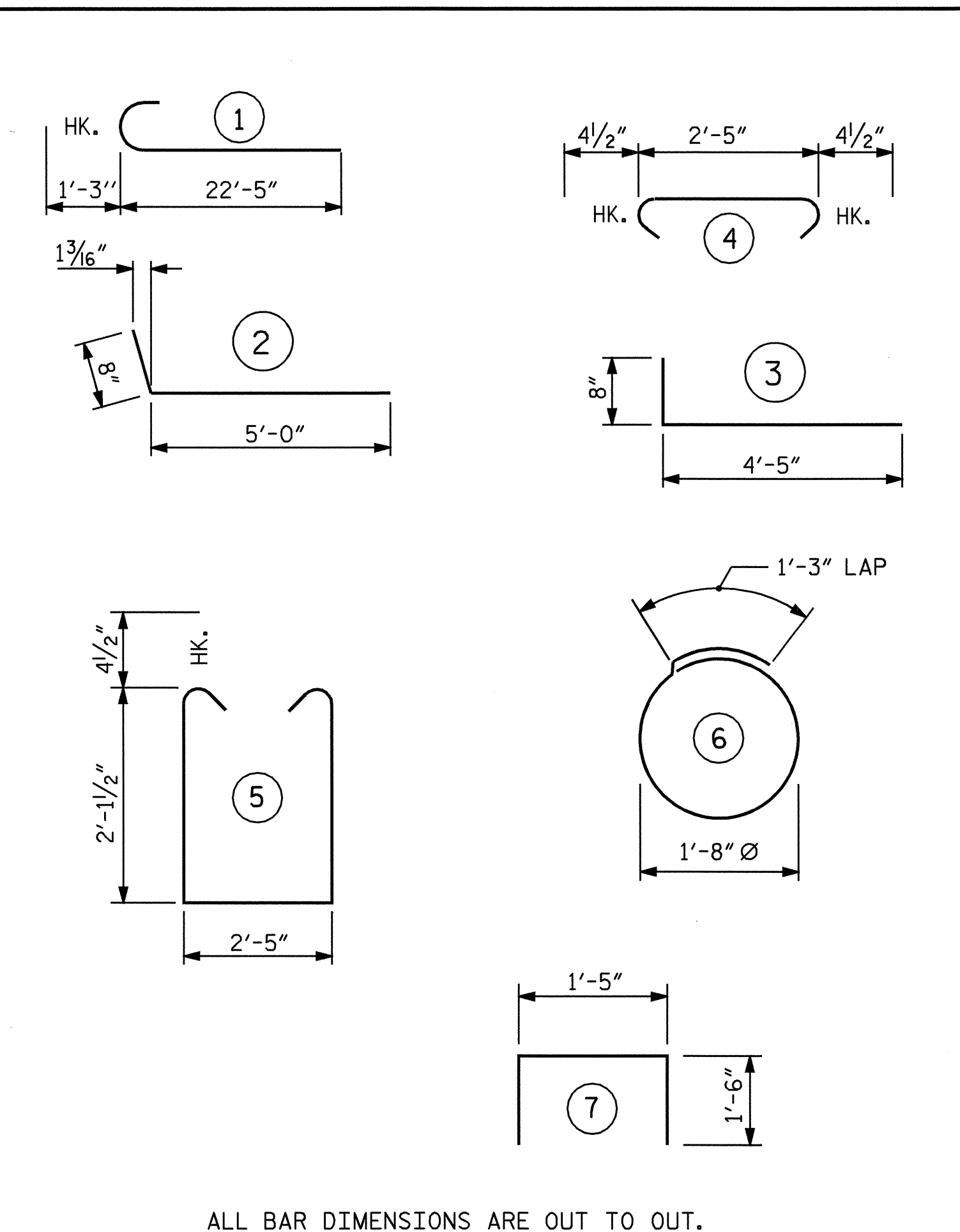


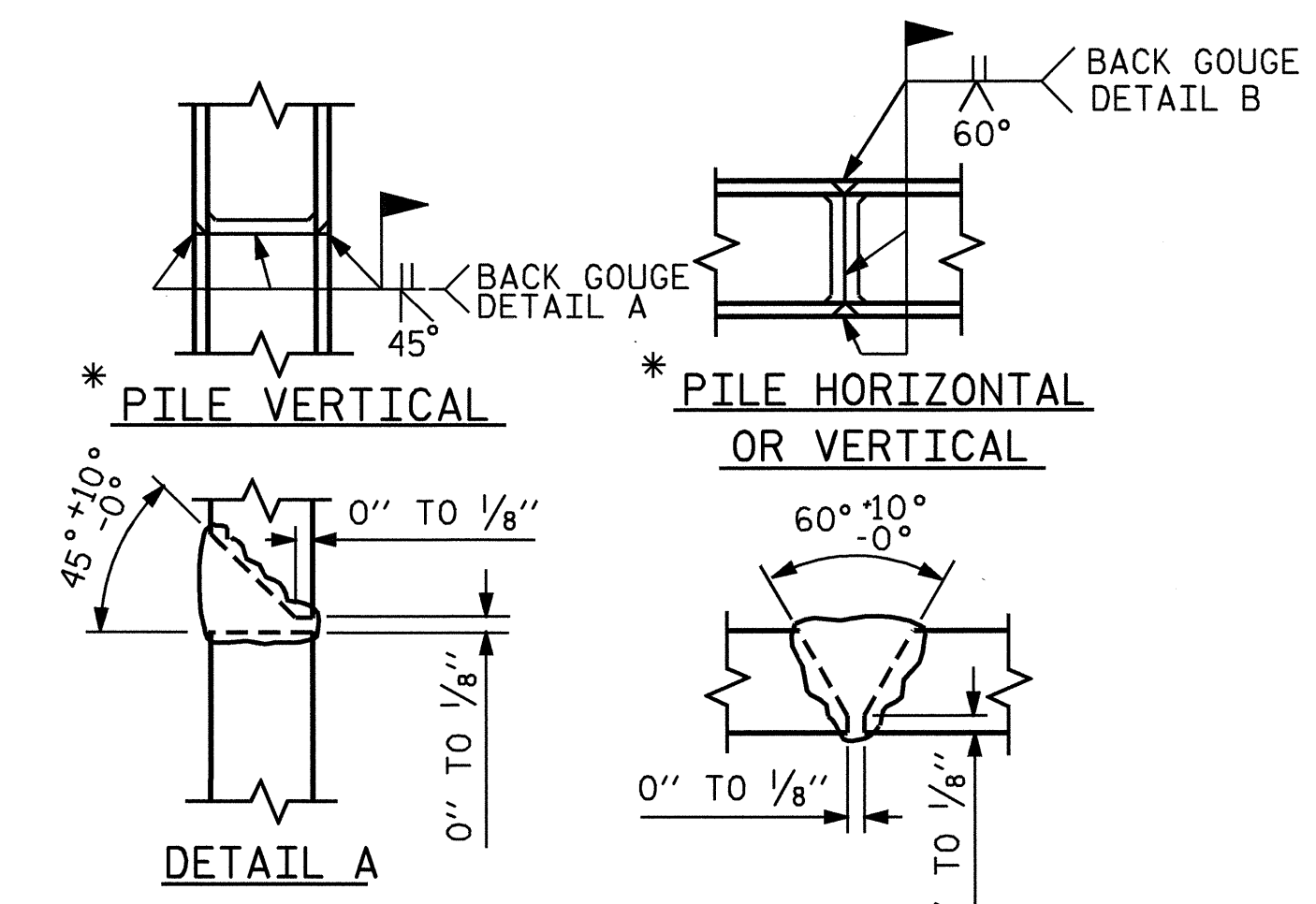
BAR TYPES



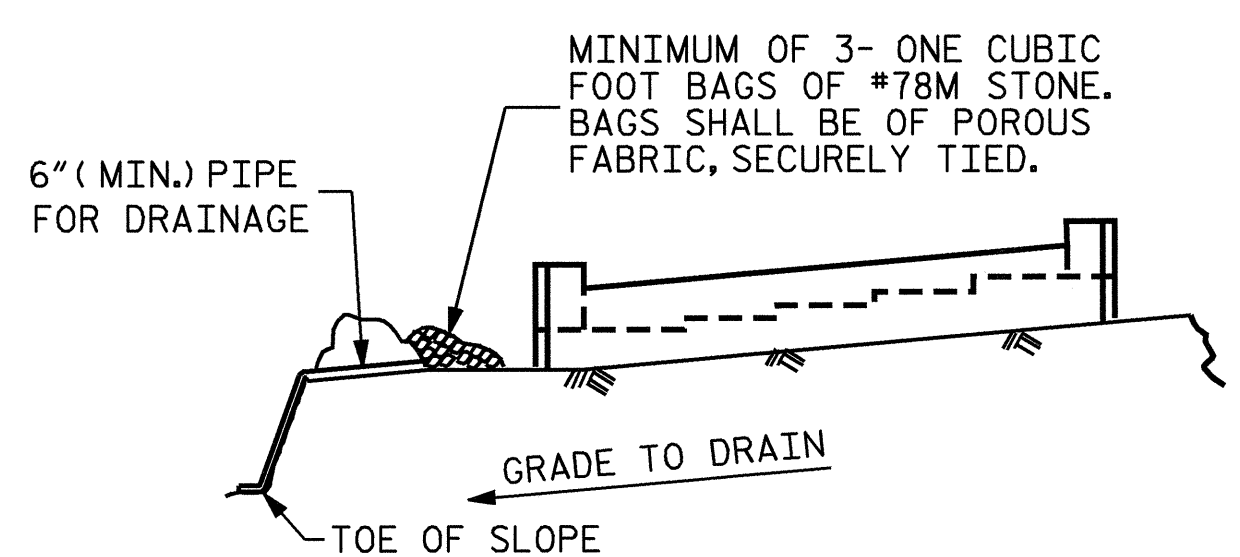
ALL BAR DIMENSIONS ARE OUT TO OUT.

BILL OF MATERIAL

END BENT #1					
BAR	NO.	SIZE	TYPE	LENGTH	WEIGHT
B1	16	#9	1	23'-8"	1287
B2	4	#4	STR	19'-3"	51
B3	8	#4	STR	19'-3"	103
B4	9	#4	STR	2'-5"	15
D1	20	#6	STR	1'-6"	45
H1	12	#4	2	5'-8"	45
H2	12	#4	3	5'-1"	41
H3	6	#4	STR	2'-8"	11
H4	6	#4	STR	2'-5"	10
S1	34	#4	4	3'-2"	72
S2	34	#4	5	7'-5"	168
S3	10	#4	6	6'-6"	43
S4	4	#4	7	4'-5"	12
V1	18	#4	STR	4'-5"	53
V2	16	#4	STR	4'-0"	43
REINFORCING STEEL				=	1999 LBS
CLASS A CONCRETE					
POUR #1: CAP & BOTTOM OF WINGS					
				10.1	C.Y.
POUR #2: TOP OF WINGS					
				1.1	C.Y.
POUR #3: LATERAL GUIDE					
				0.1	C.Y.
TOTAL CLASS A CONCRETE				11.3	C.Y.
HP 12 X 53 STEEL PILES					
NO. 5		LIN. FT.		50	
STEEL PILE POINTS				5 EA.	



PILE SPLICE DETAILS

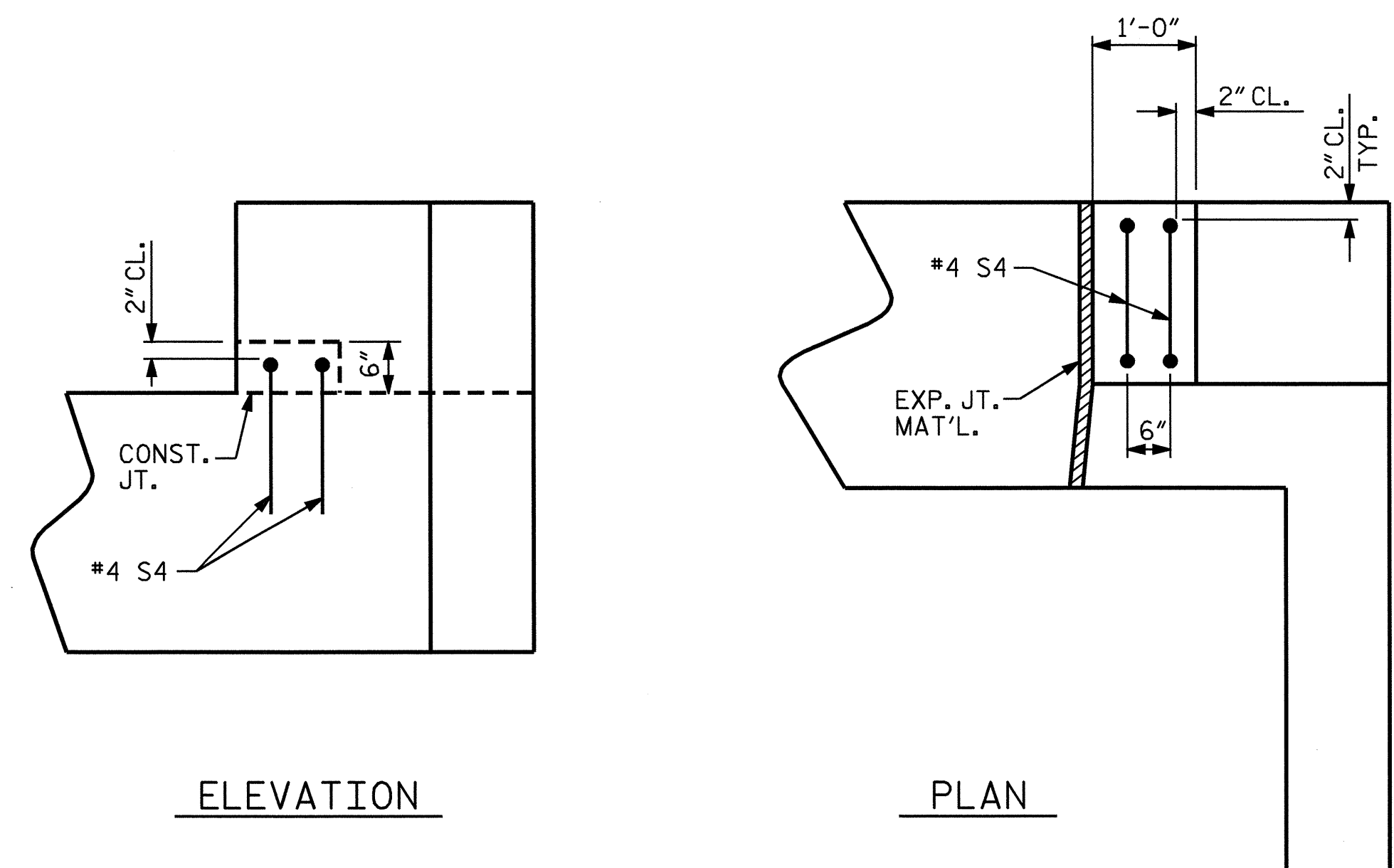


BAGGED STONE AND PIPE SHALL BE PLACED IMMEDIATELY AFTER COMPLETION OF END BENT EXCAVATION. PIPE MAY BE EITHER CONCRETE, CORRUGATED STEEL, CORRUGATED ALUMINUM ALLOY, OR CORRUGATED PLASTIC. PERFORATED PIPE WILL NOT BE ALLOWED.

BAGGED STONE SHALL REMAIN IN PLACE UNTIL THE ENGINEER DIRECTS THAT IT BE REMOVED. THE CONTRACTOR SHALL REMOVE AND DISPOSE OF SILT ACCUMULATIONS AT BAGGED STONE WHEN SO DIRECTED BY THE ENGINEER. BAGS SHALL BE REMOVED AND REPLACED WHENEVER THE ENGINEER DETERMINES THAT THEY HAVE DETERIORATED AND LOST THEIR EFFECTIVENESS.

NO SEPARATE PAYMENT WILL BE MADE FOR THIS WORK AND THE ENTIRE COST OF THIS WORK SHALL BE INCLUDED IN THE UNIT CONTRACT PRICE BID FOR THE SEVERAL PAY ITEMS.

TEMPORARY DRAINAGE AT END BENT



LATERAL GUIDE DETAILS
RIGHT LATERAL GUIDE SHOWN, LEFT LATERAL GUIDE SIMILAR

PROJECT NO. B-3666
HENDERSON COUNTY
STATION: 16+25.50 -L-

SHEET 3 OF 3

STATE OF NORTH CAROLINA
DEPARTMENT OF TRANSPORTATION
RALEIGH

SUBSTRUCTURE
END BENT #1



DRAWN BY : QT NGUYEN/CRY DATE : 12-04
CHECKED BY : LL MURPHY DATE : 02/05

REVISIONS						SHEET NO.	
NO.	BY:	DATE:	NO.	BY:	DATE:	S-10	
1			3			TOTAL SHEETS	
2			4			21	