

NOTES

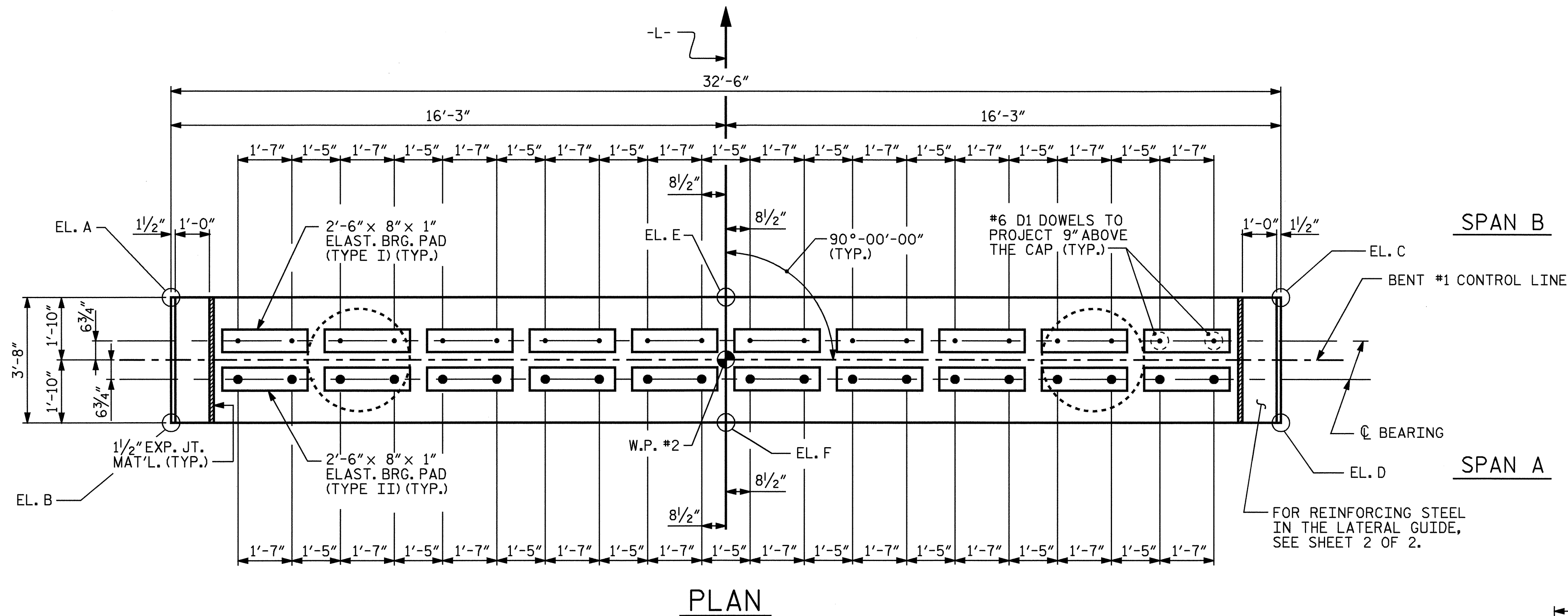
STIRRUPS IN CAP MAY BE SHIFTED AS NECESSARY TO CLEAR #6 D1 DOWELS.

HOOKS ON "V" BARS MAY BE TURNED AS NECESSARY FOR PLACING REINFORCING STEEL.

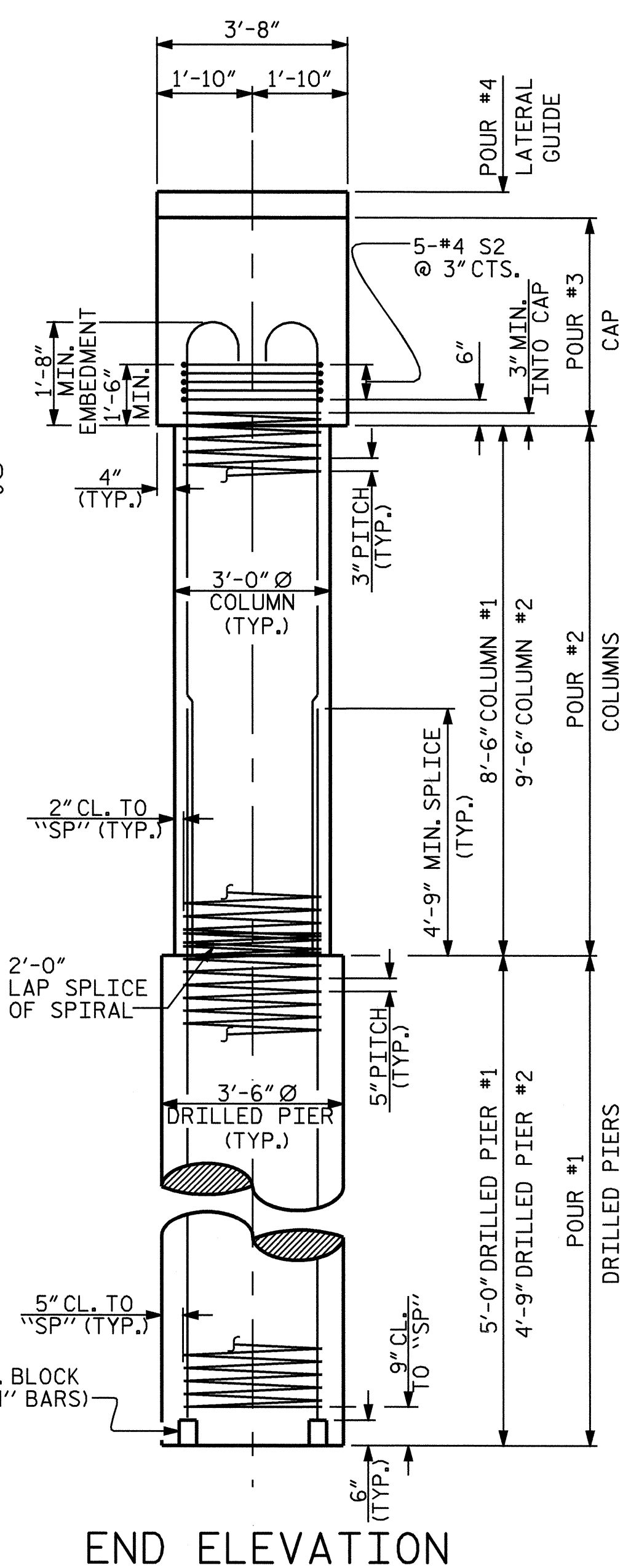
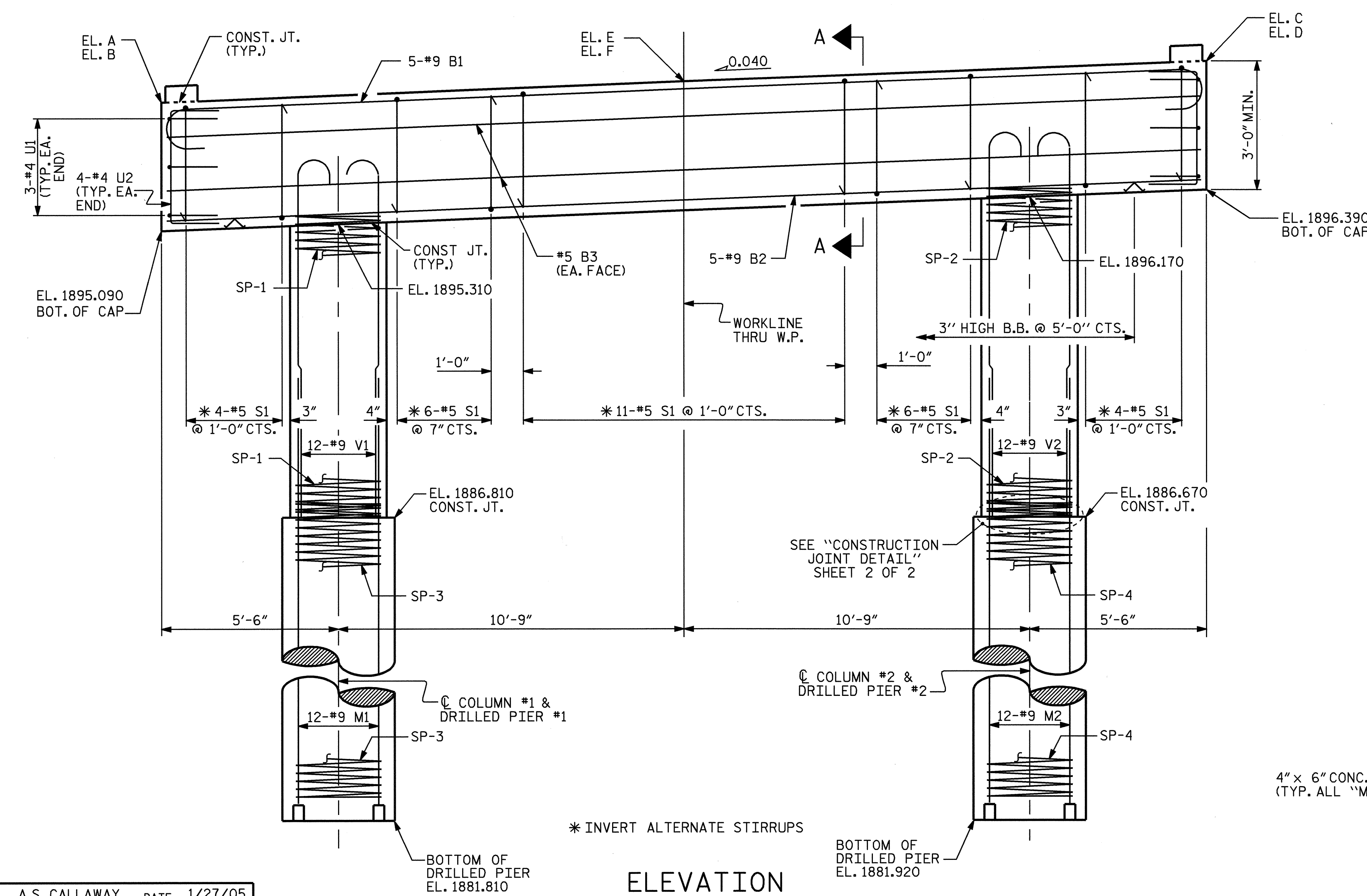
ALL STEEL IN THE DRILLED PIERS IS INCLUDED IN THE PAY ITEMS FOR "REINFORCING STEEL" AND "SPIRAL COLUMN REINFORCING STEEL".

THE CONTRACTOR'S ATTENTION IS CALLED TO THE FACT THAT THE LONGITUDINAL REINFORCEMENT FOR THE DRILLED PIERS IS DETAILED WITH 3 FEET OF EXTRA LENGTH.

THE LATERAL GUIDE AT EACH END OF THE CAP IS NOT TO BE POURED UNTIL AFTER THE CORED SLAB UNITS ARE IN PLACE.



TOP OF CAP ELEVATIONS	
EL. A	1898.234
EL. B	1898.090
EL. C	1899.534
EL. D	1899.390
EL. E	1898.884
EL. F	1898.740



ELEVATION

END ELEVATION

PROJECT NO. B-3666
HENDERSON COUNTY
 STATION: 16+25.50 -L-

SHEET 1 OF 2

STATE OF NORTH CAROLINA
 DEPARTMENT OF TRANSPORTATION
 RALEIGH

SUBSTRUCTURE
 BENT 1



REVISIONS				SHEET NO.	
NO.	BY:	DATE:	NO.	BY:	DATE:
1			3		
2			4		

TOTAL SHEETS: 21

DRAWN BY : A.S. CALLAWAY DATE : 1/27/05
 CHECKED BY : MG. CHEEK DATE : 03/05

07-JUN-2005 09:30
 R:\STRUCTURE\FINALP\B-3666.sd.B*.dgn
 dahodge