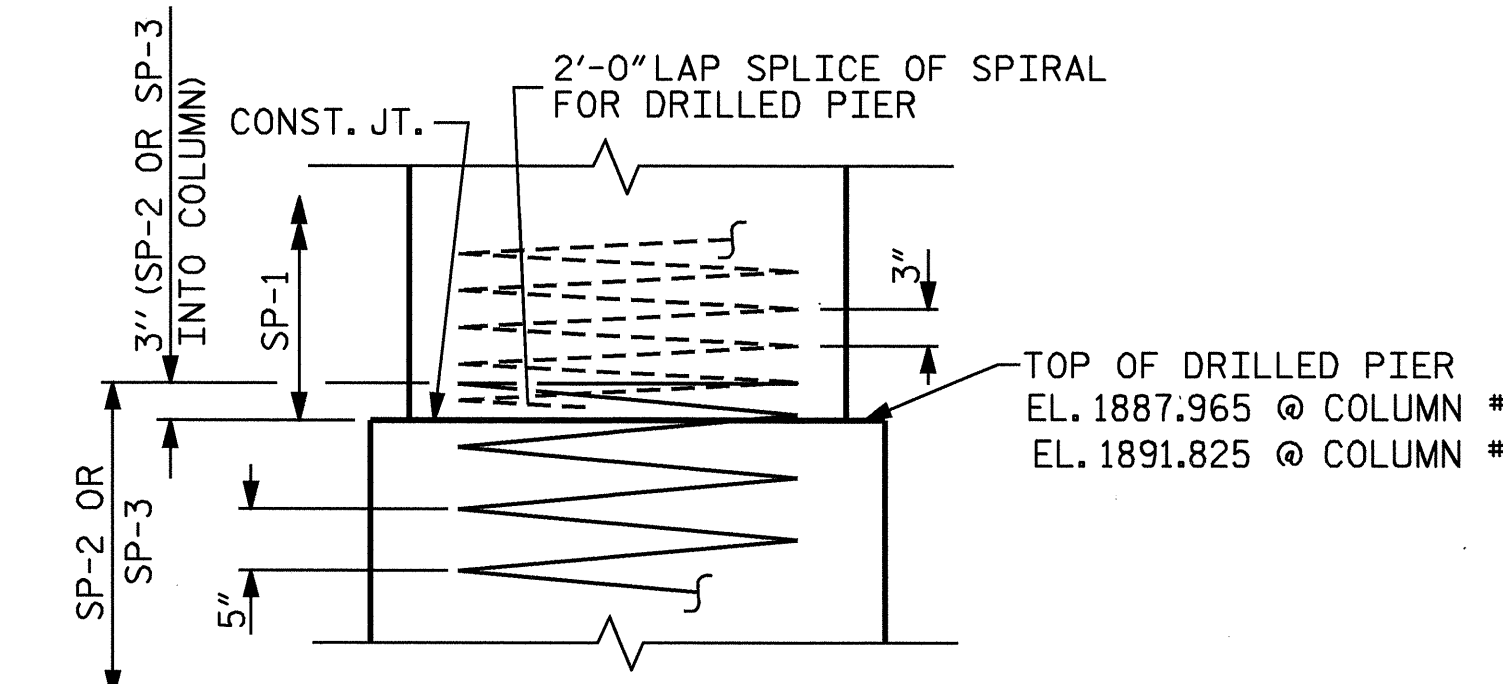
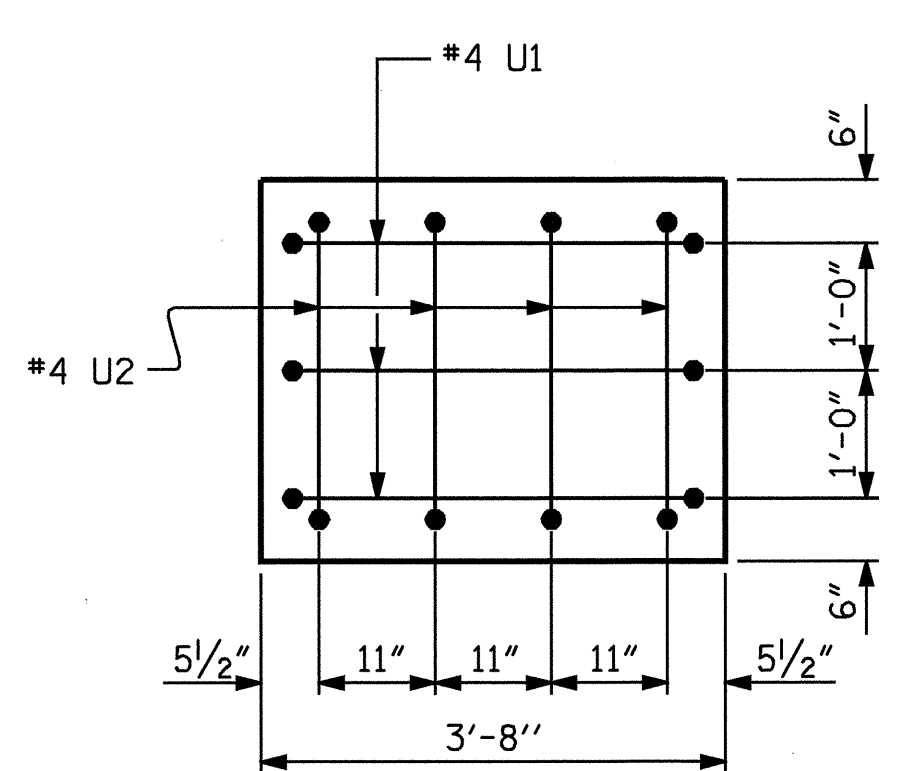


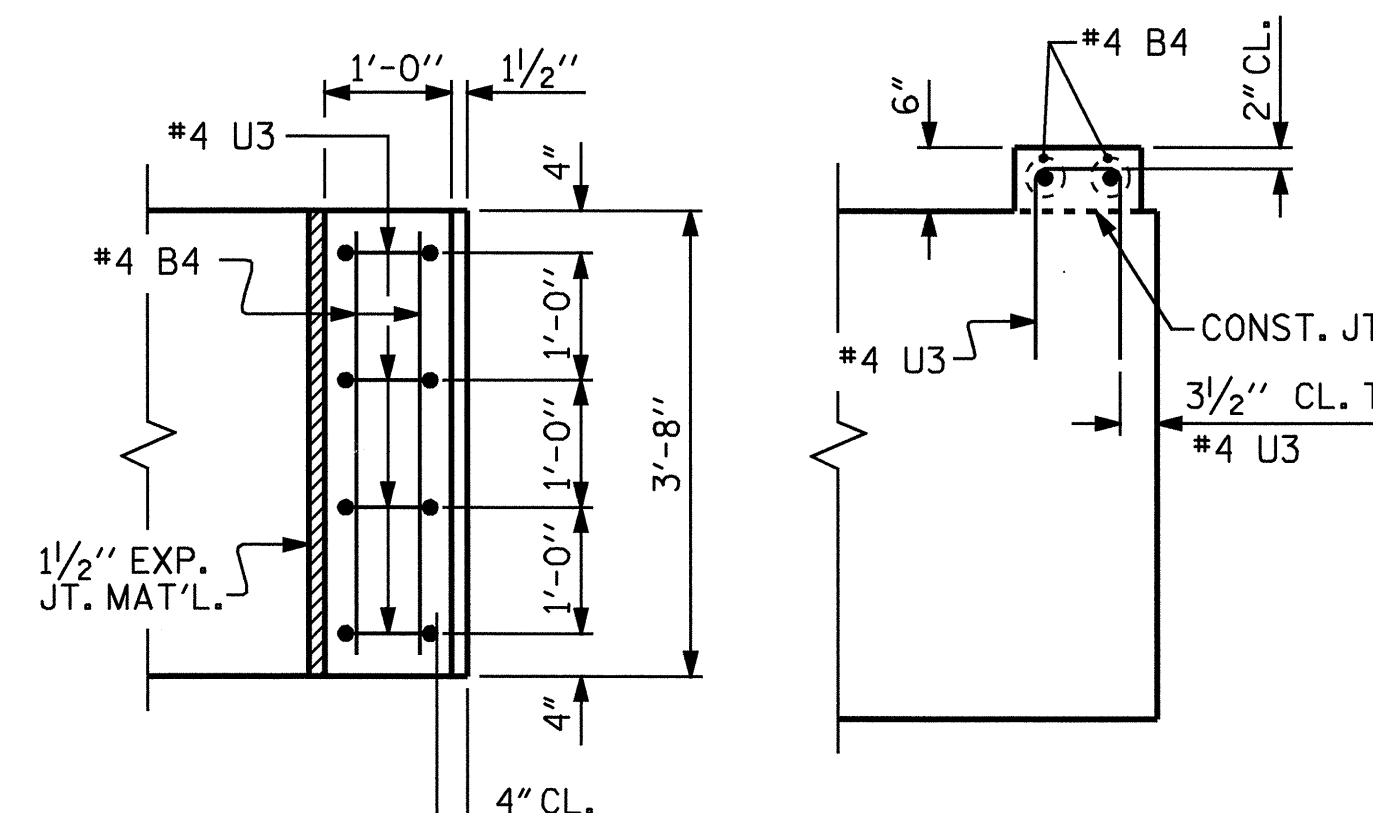
SECTION A-A



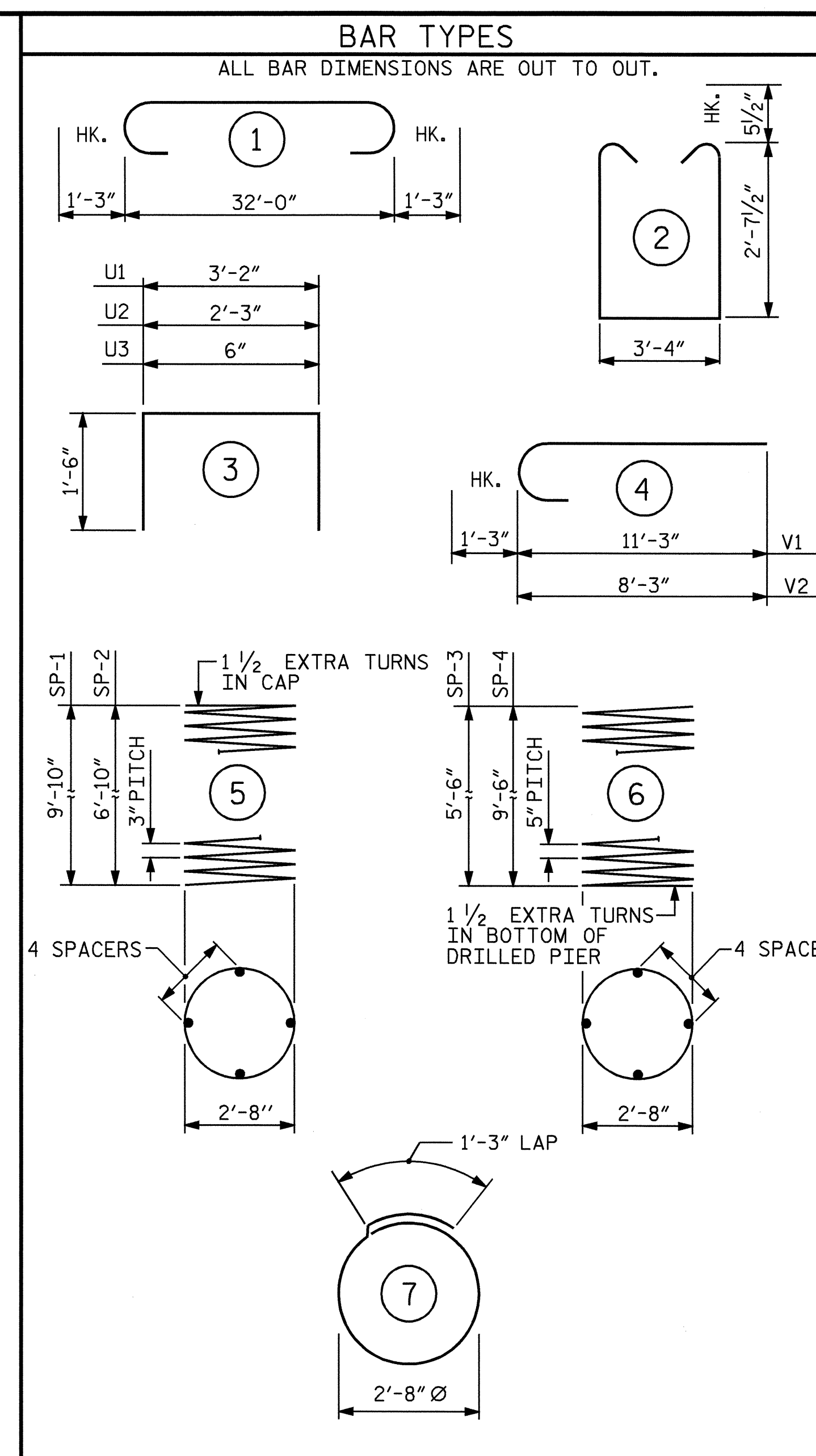
CONSTRUCTION JOINT DETAIL



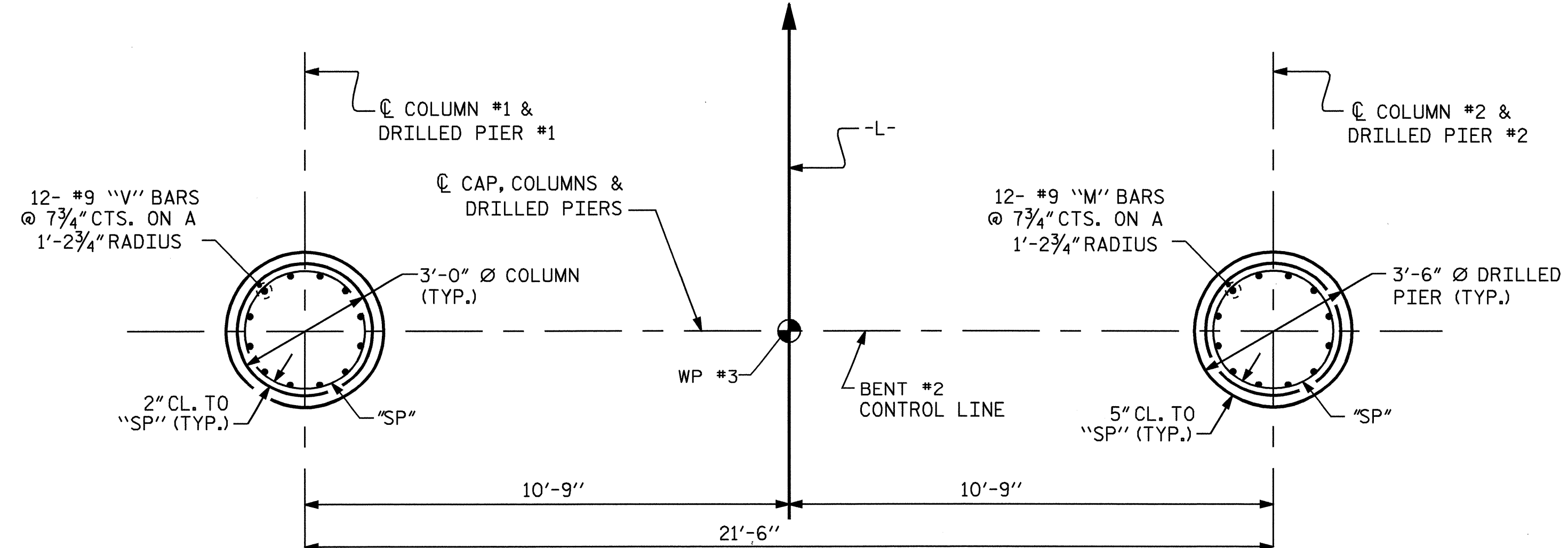
END OF CAP DETAIL  
(TYP. EACH END)



LATERAL GUIDE REINFORCING DETAIL  
(EACH END SIMILAR)



BILL OF MATERIAL						
BENT 2						
BAR	NO.	SIZE	TYPE	LENGTH	WEIGHT	
B1	5	#9	1	34'-6"	587	
B2	5	#9	STR	32'-2"	547	
B3	4	#5	STR	32'-2"	134	
B4	4	#4	STR	3'-4"	9	
D1	40	#6	STR	1'-6"	90	
M1	12	#9	STR	13'-3"	541	
M2	12	#9	STR	17'-3"	704	
S1	31	#5	2	9'-6"	307	
S2	10	#4	7	9'-8"	65	
U1	6	#4	3	6'-2"	25	
U2	8	#4	3	5'-3"	28	
U3	8	#4	3	3'-6"	19	
V1	12	#9	4	12'-6"	510	
V2	12	#9	4	9'-6"	388	
REINFORCING STEEL					3954 LBS.	
TOTAL SPIRAL COLUMN REINFORCING STEEL					720 LBS.	
CLASS A CONCRETE						
POUR #2 (COLUMNS)					4.2 C.Y.	
POUR #3 (CAP)					13.2 C.Y.	
POUR #4 (LATERAL GUIDES)					0.1 C.Y.	
TOTAL					17.5 C.Y.	
DRILLED PIER QUANTITIES						
DRILLED PIER CONCRETE						
POUR #1 (DRILLED PIERS)						5.7 C.Y.
3'-6" Ø DRILLED PIERS NOT IN SOIL						4.5 L.F.
3'-6" Ø DRILLED PIERS IN SOIL						11.5 L.F.
PERMANENT STEEL CASING FOR 3'-6" Ø DRILLED PIERS						9.79 L.F.
SPT TESTING						2 EA.
CROSSHOLE SONIC LOGGING						1 EA.
CSL TUBES						84.00 L.F.



PLAN OF DRILLED PIERS & COLUMNS  
(REINFORCING STEEL IS TYPICAL FOR EACH COLUMN & DRILLED PIER)

\* THE SP-1 SPIRAL REINFORCING STEEL SHALL BE W20 OR D-20 COLD DRAWN WIRE OR #4 PLAIN OR DEFORMED BAR.  
 \*\* THE SP-2 & SP-3 SPIRAL REINFORCING STEEL SHALL BE W31 OR D-31 COLD DRAWN WIRE OR #5 PLAIN OR DEFORMED BAR.

PROJECT NO. B-3666  
HENDERSON COUNTY  
 STATION: 16+25.50 -L-

SHEET 2 OF 2

STATE OF NORTH CAROLINA DEPARTMENT OF TRANSPORTATION RALEIGH					
SUBSTRUCTURE BENT 2					
REVISIONS					SHEET NO.
NO.	BY:	DATE:	NO.	BY:	DATE:
1			3		
2			4		
					TOTAL SHEETS 21



DRAWN BY: A.S. CALLAWAY DATE: 1/27/05  
 CHECKED BY: MG. CHEEK DATE: 03/05