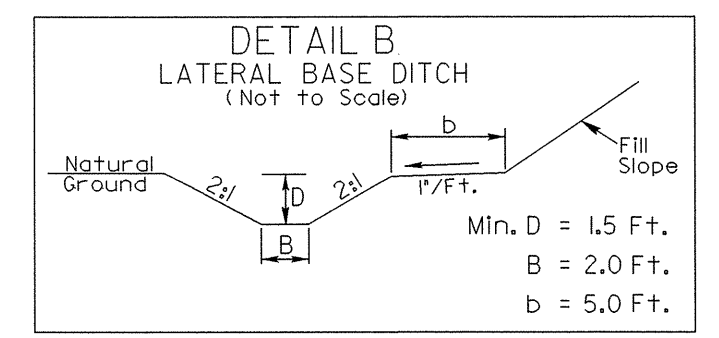
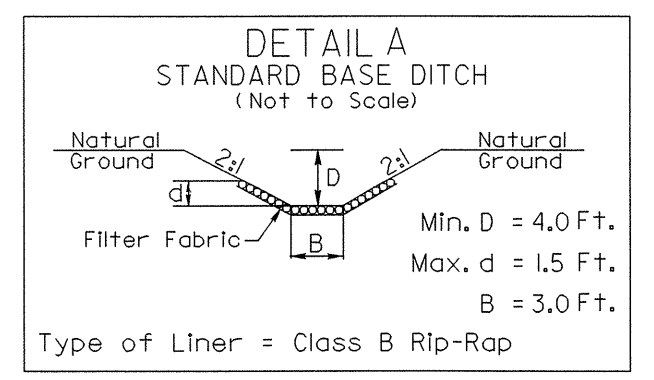


UTILITY CONSTRUCTION

DATUM DESCRIPTION
 THE LOCALIZED COORDINATE SYSTEM DEVELOPED FOR THIS PROJECT IS BASED ON THE STATE PLANE COORDINATES ESTABLISHED BY NCDOT FOR MONUMENT "B3834-1" WITH NAD 83 STATE PLANE GRID COORDINATES OF NORTHING: 7888267.36(1) EASTING: 1681692.599(1) THE AVERAGE COMBINED GRID FACTOR USED ON THIS PROJECT (GROUND TO GRID) IS: 0.999906610 THE N.C. LAMBERT GRID BEARING AND LOCALIZED HORIZONTAL GROUND DISTANCE FROM "B3834-1" TO 'L' STATION 10+75.00 IS 400.33' AT A BEARING OF S 4° 53' 27.39" E ALL LINEAR DIMENSIONS ARE LOCALIZED HORIZONTAL DISTANCES VERTICAL DATUM USED IS NVD 29



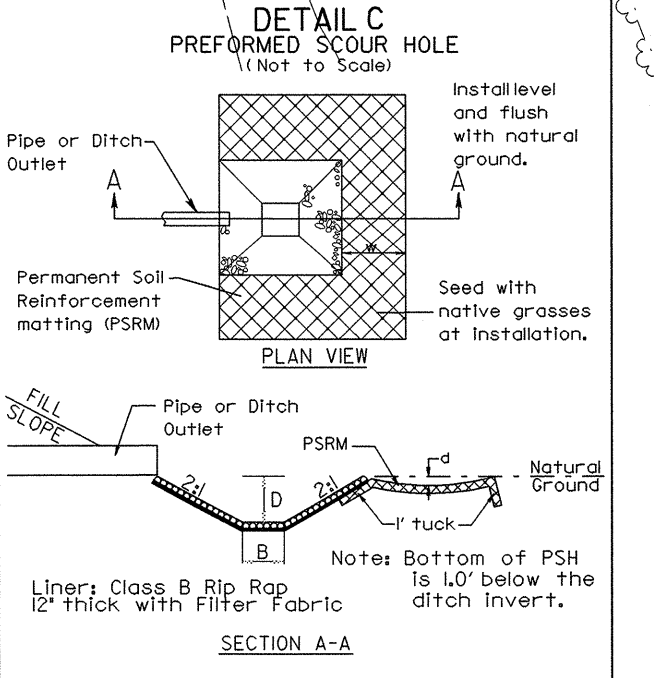
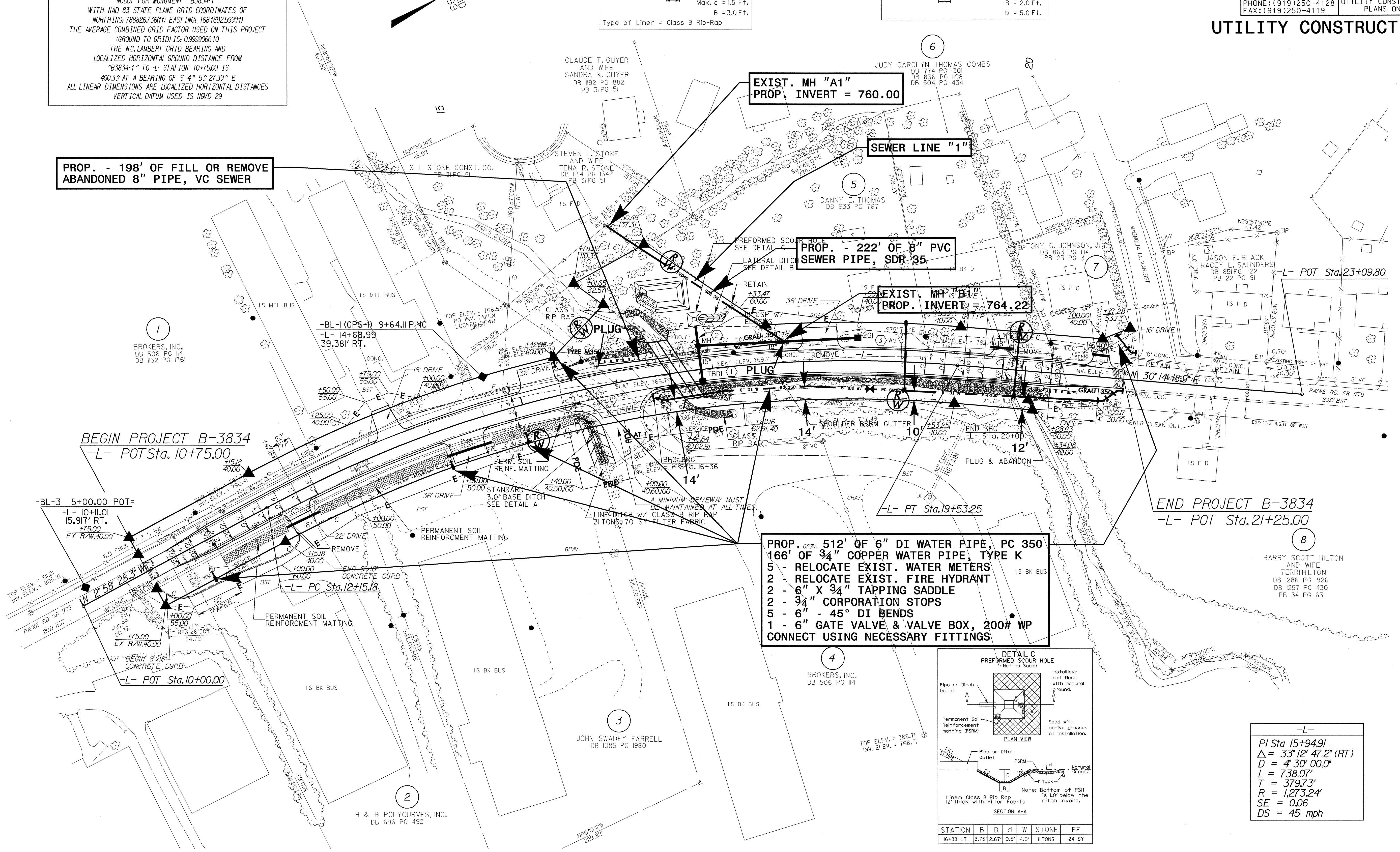
PROP. - 198' OF FILL OR REMOVE ABANDONED 8" PIPE, VC SEWER

EXIST. MH "A1"
PROP. INVERT = 760.00

PROP. - 222' OF 8" PVC SEWER PIPE, SDR 35

EXIST. MH "B1"
PROP. INVERT = 764.22

PROP. 512' OF 6" DI WATER PIPE, PC 350
166' OF 3/4" COPPER WATER PIPE, TYPE K
 5 - RELOCATE EXIST. WATER METERS
 2 - RELOCATE EXIST. FIRE HYDRANT
 2 - 6" X 3/4" TAPPING SADDLE
 2 - 3/4" CORPORATION STOPS
 5 - 6" - 45° DI BENDS
 1 - 6" GATE VALVE & VALVE BOX, 200# WP
 CONNECT USING NECESSARY FITTINGS



-L-
 PI Sta 15+94.91
 $\Delta = 33' 12' 47.2" (RT)$
 $D = 4' 30' 00.0"$
 $L = 738.07'$
 $T = 379.73'$
 $R = 1273.24'$
 $SE = 0.06$
 $DS = 45 \text{ mph}$

STATION	B	D	d	W	STONE	FF
16+88 LT	3.75'	2.67'	0.5'	4.0'	11 TONS	24 SY