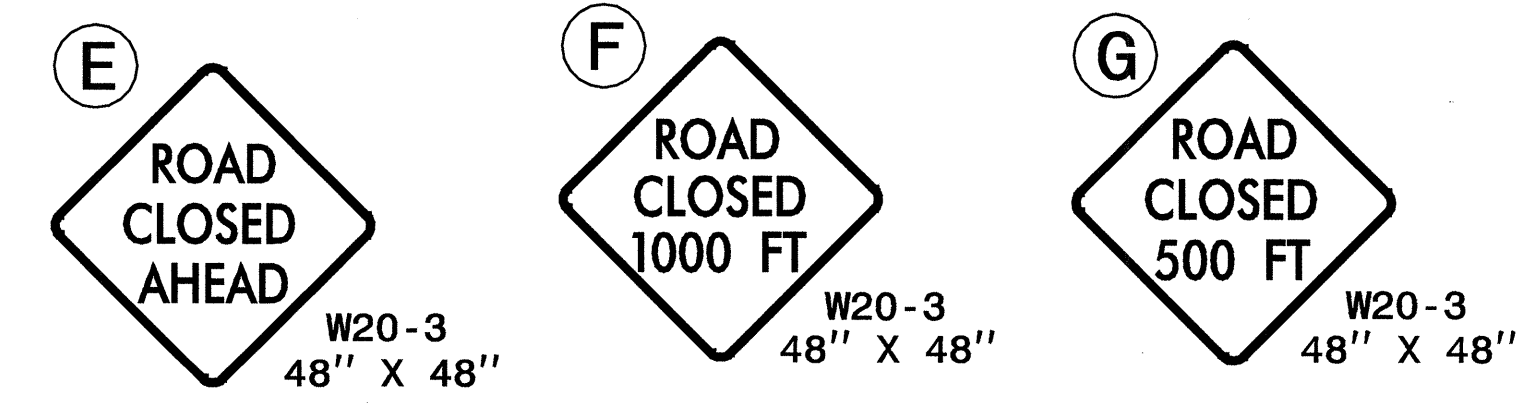
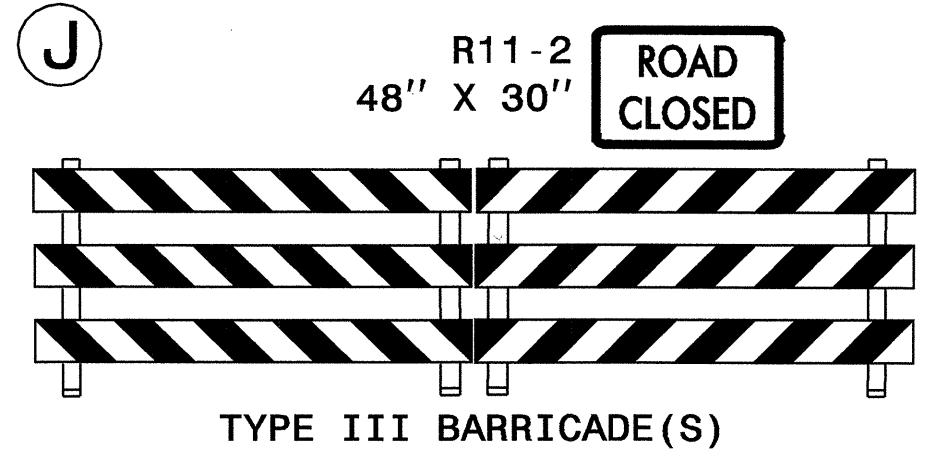
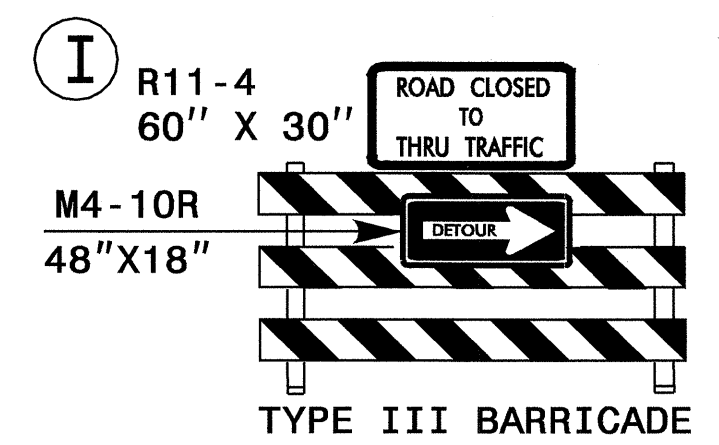
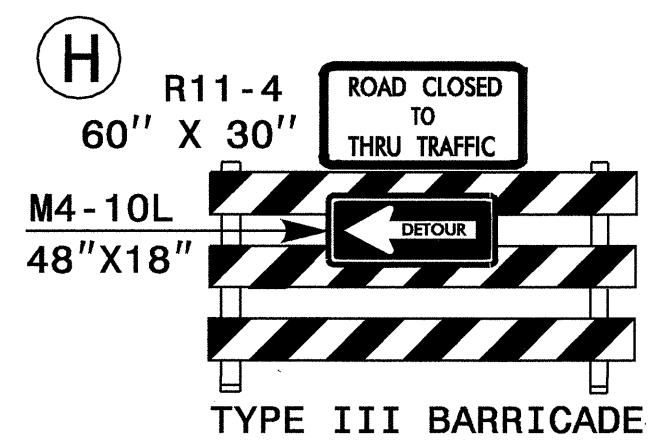


* NOTE: USE RDWY STD DWG 1101.03 SHEET 1 OF 9 TO INSTALL SIGNS 'E', 'F' & 'G' OR AS DIRECTED BY THE ENGINEER.



BRIDGE #156 Over Hasty Creek on SR 1779

● ● DETOUR



| APPROVED: <i>MMM</i> DATE: <i>4/14/05</i> | OFFSITE DETOUR MAP AND SIGNING | | | | | | | | | |
|---|---------------------------------------|--|-----------|--|--|--|--|--|--|--|
| | | | | | | | | | | |
| SCALE: NONE | DATE: 04-14-05 | <table border="1"> <tr> <th colspan="2">REVISIONS</th> </tr> <tr> <td> </td> <td> </td> </tr> <tr> <td> </td> <td> </td> </tr> <tr> <td> </td> <td> </td> </tr> </table> | REVISIONS | | | | | | | |
| REVISIONS | | | | | | | | | | |
| | | | | | | | | | | |
| | | | | | | | | | | |
| | | | | | | | | | | |
| DWG. BY: PS | DESIGN BY: JPG | | | | | | | | | |
| REVIEWED BY: MMM | | | | | | | | | | |

19-APR-2005 09:53
 \\nets-c01fs01\B38344\Top\B38344_TC_TCP3.dgn
 Dseymore AT 1E1C206427