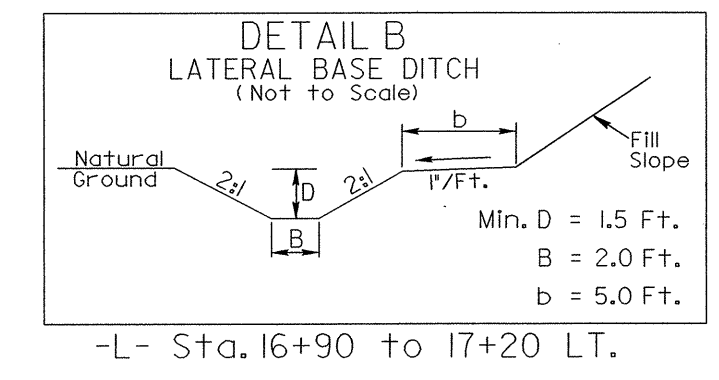
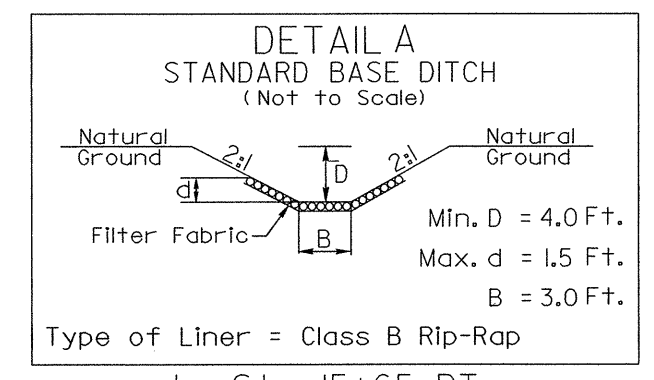
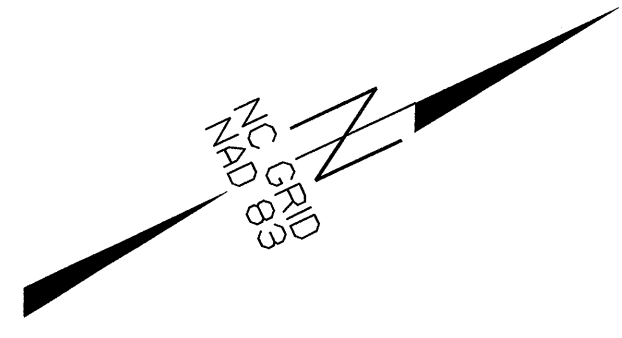
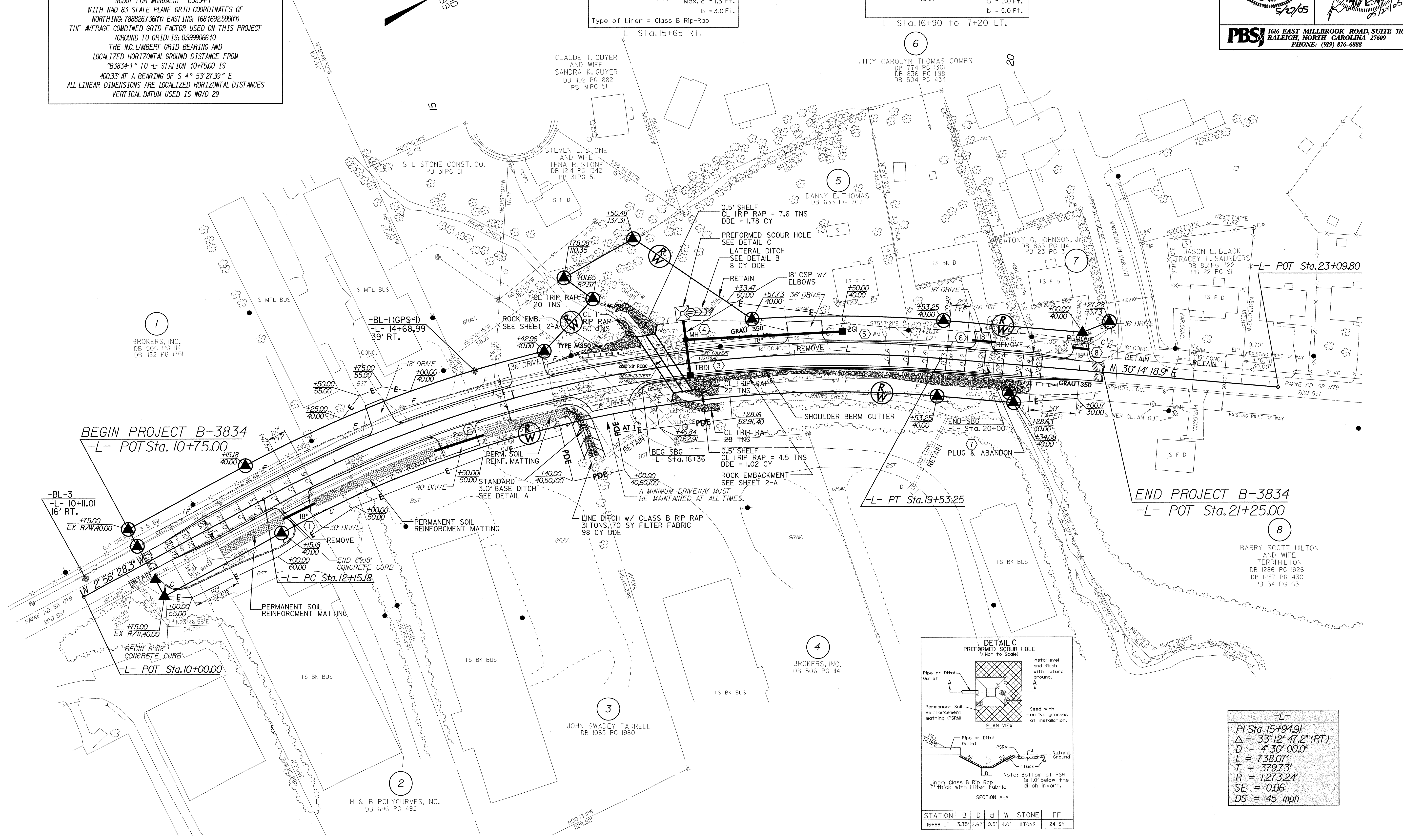
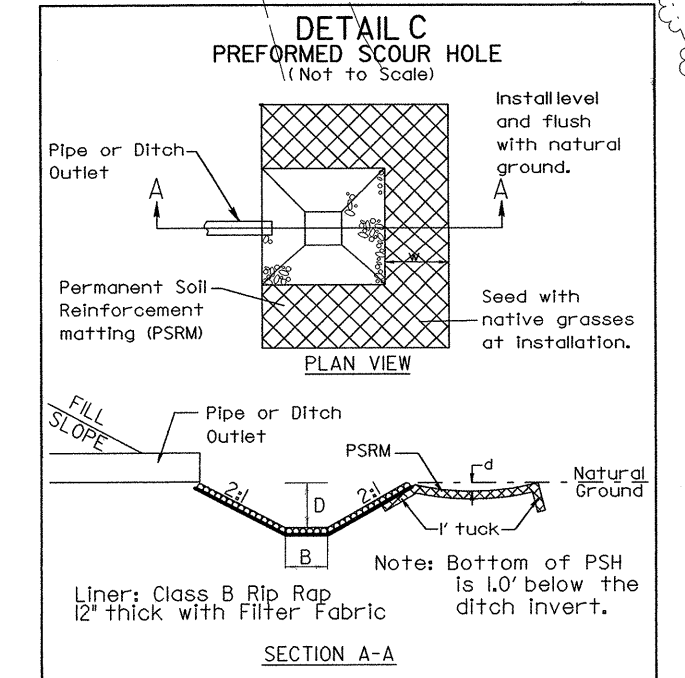


DATUM DESCRIPTION
 THE LOCALIZED COORDINATE SYSTEM DEVELOPED FOR THIS PROJECT IS BASED ON THE STATE PLANE COORDINATES ESTABLISHED BY NCDOT FOR MONUMENT "B3834-1" WITH NAD 83 STATE PLANE GRID COORDINATES OF NORTHING: 788826736(1) EASTING: 1681692599(1) THE AVERAGE COMBINED GRID FACTOR USED ON THIS PROJECT (GROUND TO GRID) IS: 0.999906610 THE N.C. LAMBERT GRID BEARING AND LOCALIZED HORIZONTAL GROUND DISTANCE FROM "B3834-1" TO L-STATION 10+75.00 IS 400.33' AT A BEARING OF S 4° 53' 27.39" E ALL LINEAR DIMENSIONS ARE LOCALIZED HORIZONTAL DISTANCES VERTICAL DATUM USED IS NGVD 29



STATION	B	D	d	W	STONE	FF
16+88 LT	3.75'	2.67'	0.5'	4.0'	11 TONS	24 SY

-L-
 PI Sta. 15+94.91
 $\Delta = 33^\circ 12' 47.2''$ (RT)
 D = 4' 30" 00.0"
 L = 738.07'
 T = 379.73'
 R = 1,273.24'
 SE = 0.06
 DS = 45 mph



DESIGN EXCEPTION REQUIRED FOR SHOULDER WIDTH

NOTE: SEE SHEET 5 FOR -L- PROFILE
 SEE SHEET C-1 THRU C-5 FOR CULVERT PLANS

24-MAY-2005 11:13
 8/17/99
 1616 EAST MILLBROOK ROAD, SUITE 310
 RALEIGH, NORTH CAROLINA 27609
 PHONE: (919) 876-6888
 1616 EAST MILLBROOK ROAD, SUITE 310
 RALEIGH, NORTH CAROLINA 27609
 PHONE: (919) 876-6888