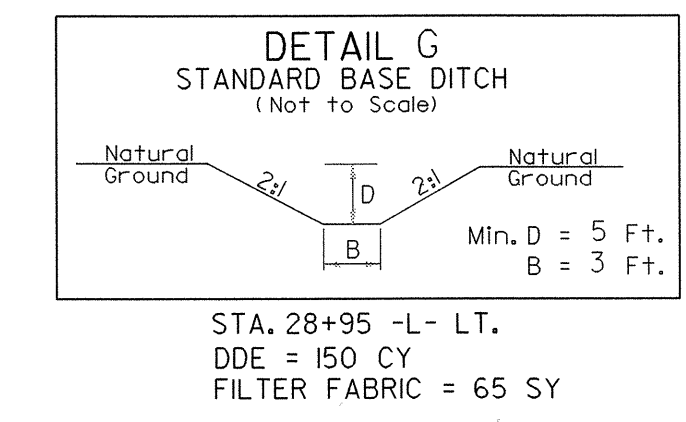
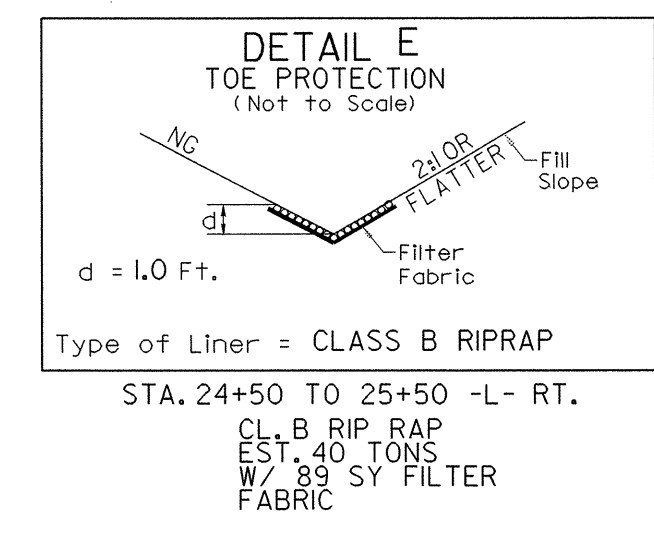
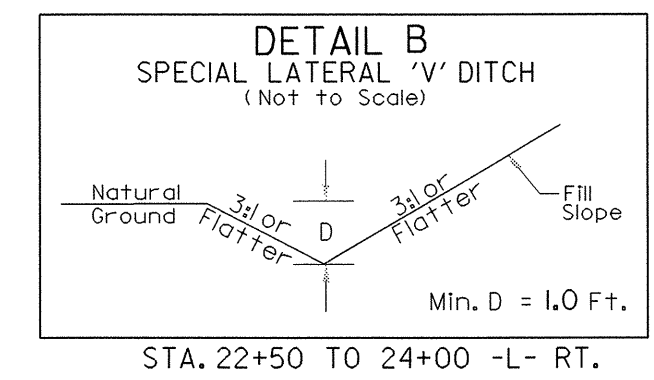
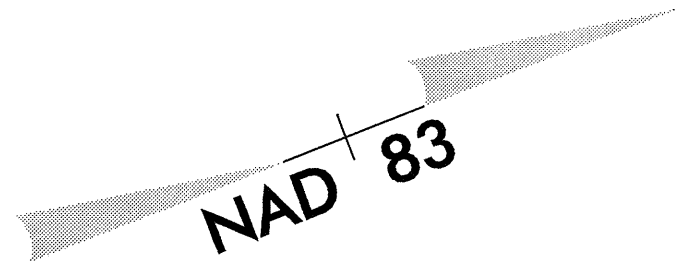


UTILITIES BY OTHERS

NOTE:
 ALL PROPOSED UTILITY WORK
 SHOWN ON THIS SHEET WILL
 BE DONE BY OTHERS

SEE SHEET 7 FOR -L- PROFILE
 SEE SHEET 8 FOR -DRI- PROFILE

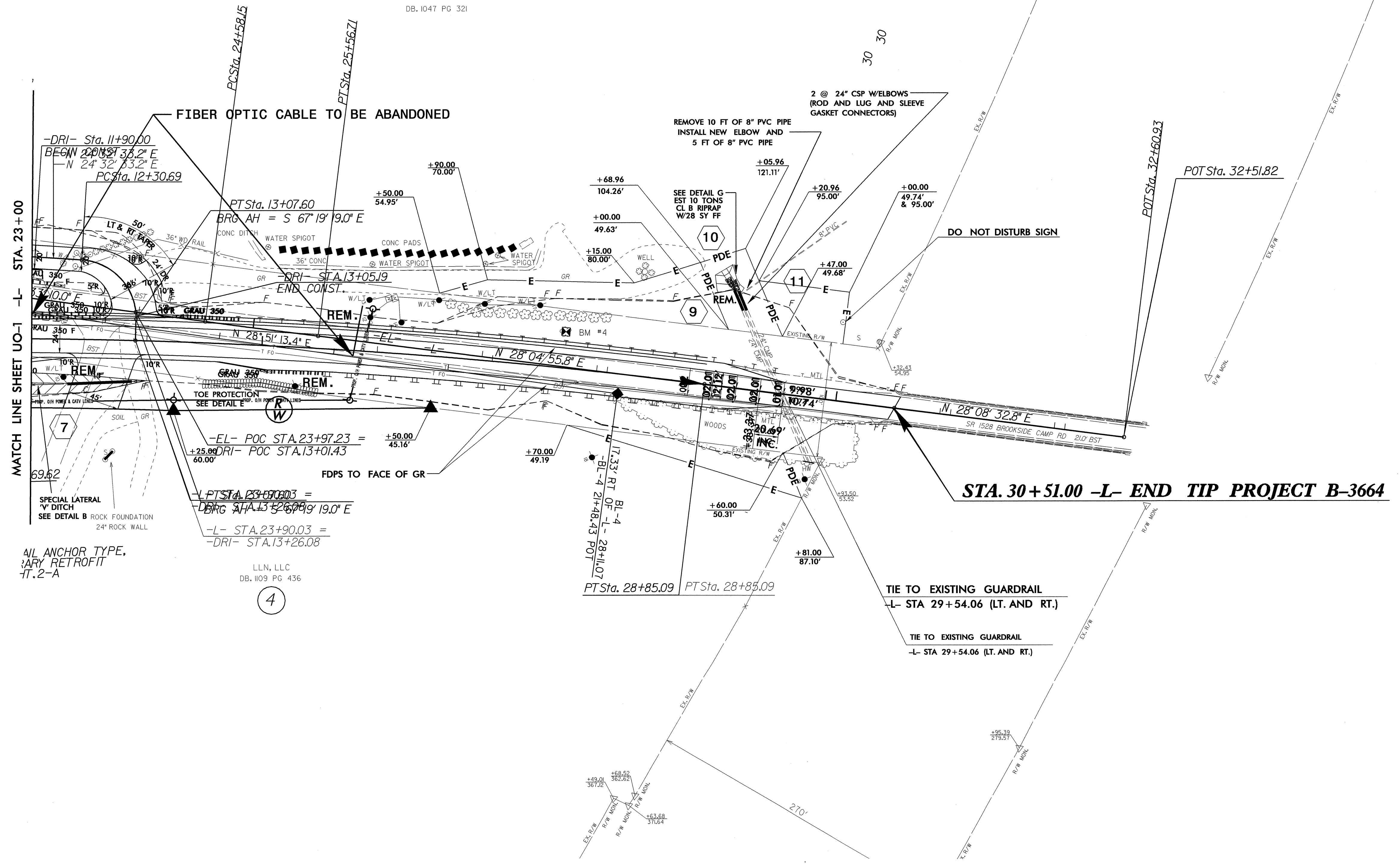


-DRI-
 PI Sta 12+79.09
 $\Delta = 88^{\circ} 08' 07.8''$ (RT)
 D = 114' 35" 29.6"
 L = 76.9'
 T = 48.40'
 R = 50.00'

-L-
 PI Sta 21+40.23
 $\Delta = 17^{\circ} 12' 04.8''$ (RT)
 D = 17' 08" 45.3"
 L = 150.10'
 T = 756.24'
 R = 5,000.00'
 SE = .02 FT/FT
 RUNOFF = 41.38'
 INCR. = 20.69' PER .01 SE

-DRI-
 PI Sta 11+7.50
 $\Delta = 8^{\circ} 23' 10.3''$ (LT)
 D = 114' 35" 29.6"
 L = 71.02'
 T = 43.00'
 R = 50.00'

-DRI-
 PI Sta 12+79.09
 $\Delta = 88^{\circ} 08' 07.8''$ (RT)
 D = 114' 35" 29.6"
 L = 76.9'
 T = 48.40'
 R = 50.00'



8/17/99
 08-MAR-2005 08:47
 R:\Utilities\Proj\Uo\Proj\B3664_UT_5_UO2_PSH.DGN
 PLT 15/12/2416