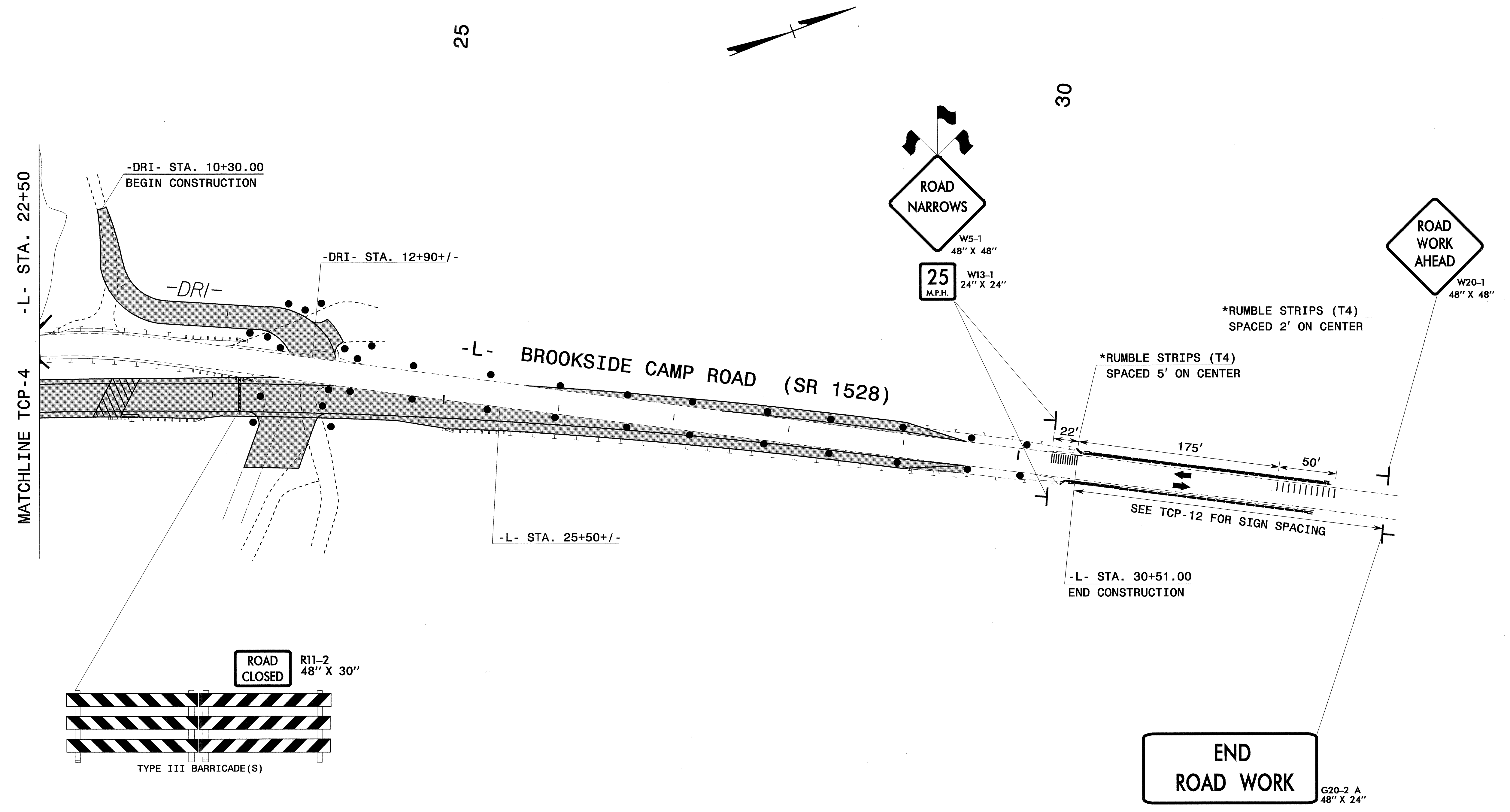


**NOTES**

- \* ALL RUMBLE STRIPS SHALL BE CENTERED IN THE LANE AND SHALL BE 2 FEET LESS THAN THE WIDTH OF THE TRAVEL LANE.
- \* RUMBLE STRIPS SHALL BE PLACED USING 4", 240 MIL WHITE



08-MAR-2005 11:07  
 \\efs-cc\fs01\B3664\Tcp\B3664\_TCP5.dgn  
 Hurrell AT 100224166

APPROVED: <i>Joseph Isham</i> DATE: 3/8/05	<b>PHASE I DETAIL 1</b>	
	SCALE: NONE	
	DATE: 3-8-05	
	DWG. BY: CLL	
	DESIGN BY: CLL	
REVIEWED BY: BLW	REVISIONS	