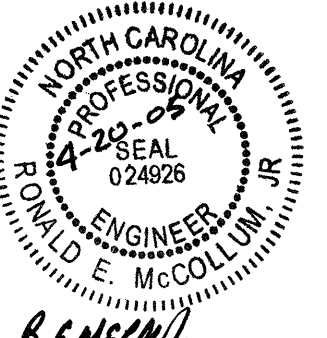
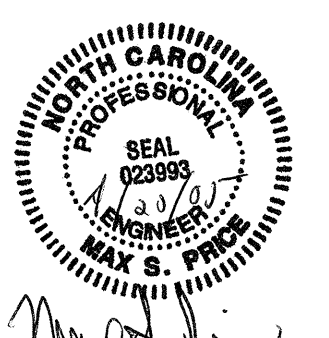
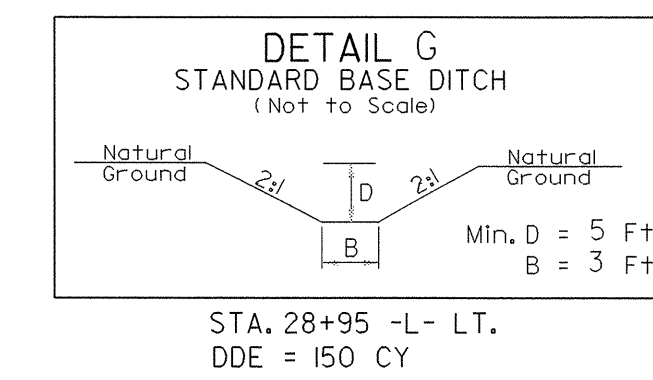
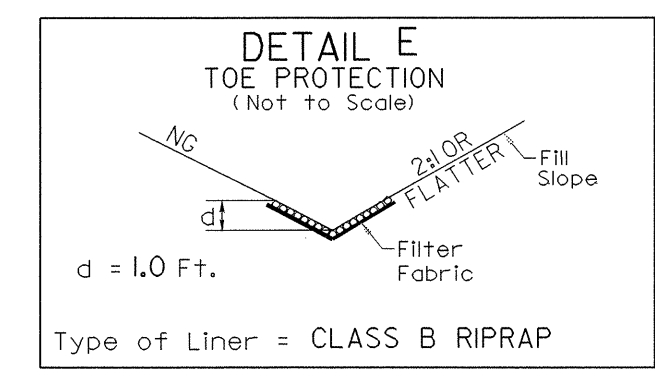
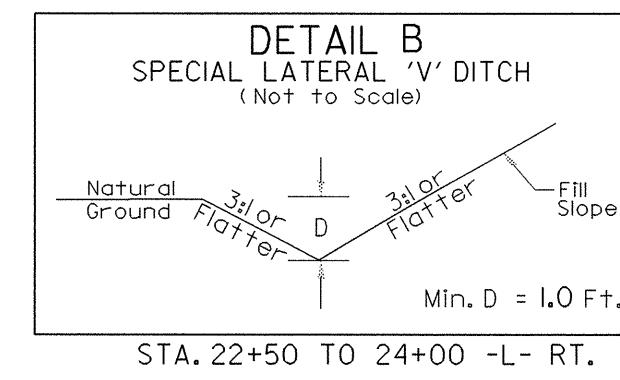
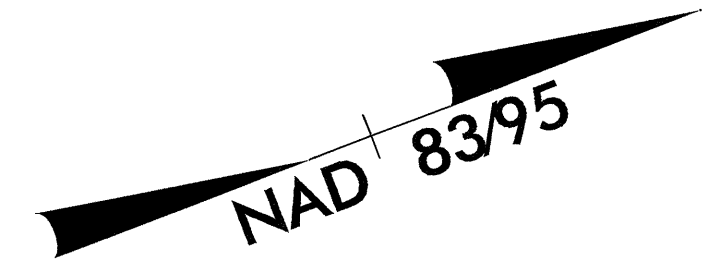


PROJECT REFERENCE NO. B-3664	SHEET NO. 5
RW SHEET NO.	
ROADWAY DESIGN ENGINEER	HYDRAULICS ENGINEER
	

SEE SHEET 7 FOR -L- & -DRI- PROFILE

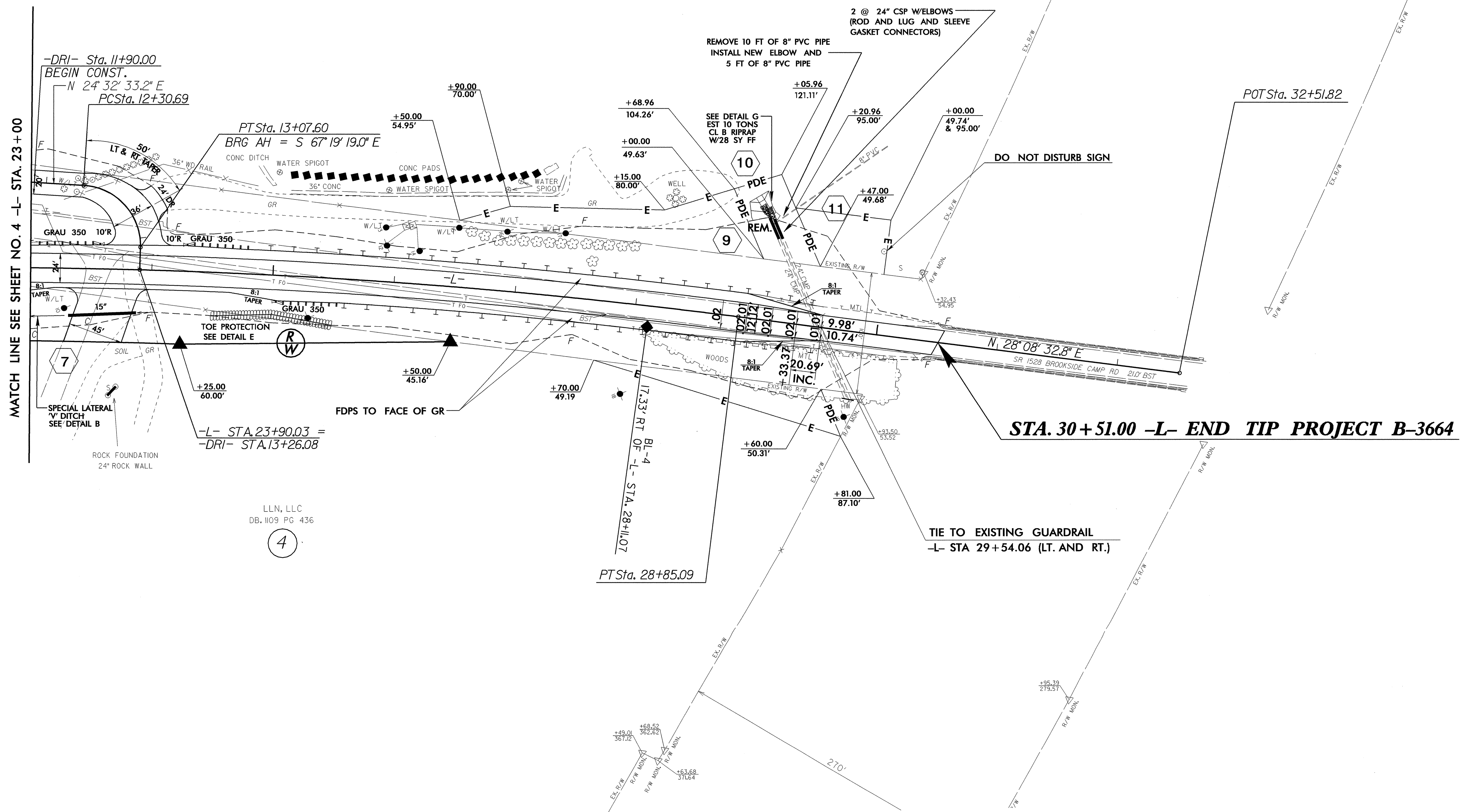


-DRI-
PI Sta 12+79.09
 $\Delta = 88^\circ 08' 07.8'' (RT)$
 $D = 114' 35.296''$
 $L = 76.91'$
 $T = 48.40'$
 $R = 50.00'$

-L-
PI Sta 21+40.23
 $\Delta = 17^\circ 12' 04.8'' (RT)$
 $D = 108' 45.3''$
 $L = 150.10'$
 $T = 756.24'$
 $R = 5,000.00'$
 $SE = .02 \text{ FT/FT}$
 $RUNOFF = 41.38'$
 $INCR. = 20.69' \text{ PER } .01 \text{ SE}$

5
McBUZ INVESTMENTS, LLC
DB. 1047 PG 321

4
LLN, LLC
DB. 1109 PG 436



MATCH LINE SEE SHEET NO. 4 -L- STA. 23+00

STA. 30+51.00 -L- END TIP PROJECT B-3664

REVISIONS

15-MAR-2005 07:43
C:\Users\pr6j\Documents\B3664_RDY_PSH05_031027.psh

8/17/99