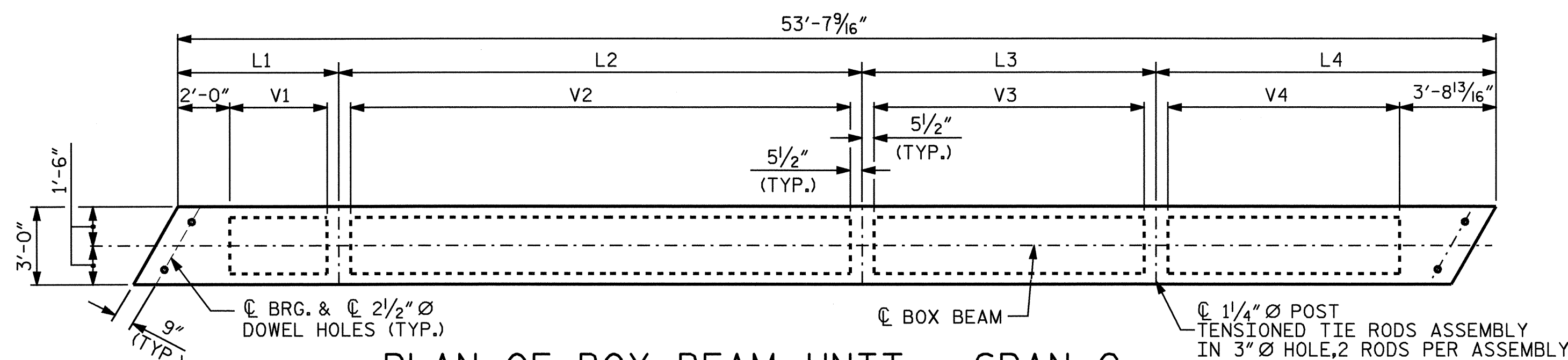


PLAN OF SPAN C



PLAN OF BOX BEAM UNIT - SPAN C

FOR REINFORCING STEEL, SEE PLAN OF BOX BEAM, SHEET 8 OF 10.
FOR DIMENSIONS, SEE PLAN CHARTS, SHEET 5 OF 10.

PROJECT NO. B-3664
HENDERSON COUNTY
STATION: 20+95.00 -L-

SHEET 4 OF 10

STATE OF NORTH CAROLINA
DEPARTMENT OF TRANSPORTATION
RALEIGH

SUPERSTRUCTURE
PLAN OF SPAN C



REVISIONS						SHEET NO.
NO.	BY:	DATE:	NO.	BY:	DATE:	5-7
1			3			TOTAL SHEETS
2			4			27

DRAWN BY: V. X. NGUYEN DATE: 3-24-05
CHECKED BY: D. HODGE DATE: 4-05