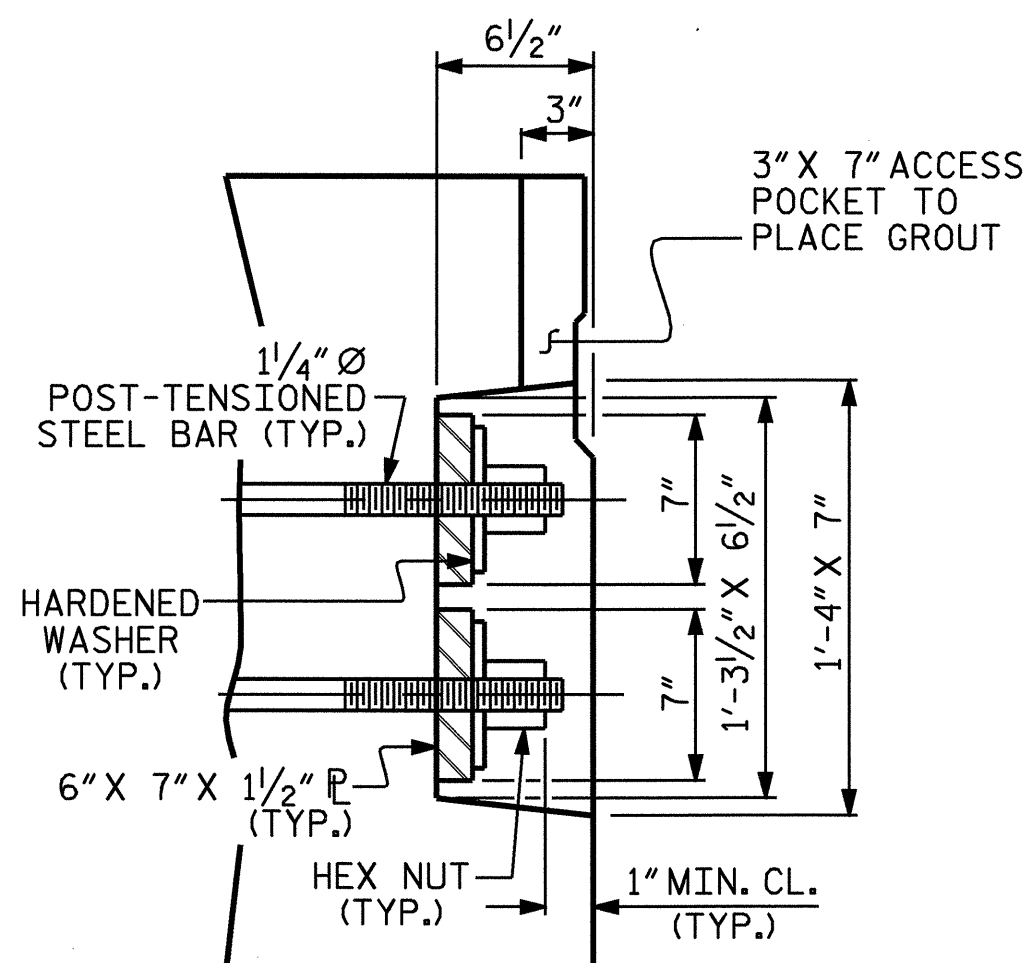
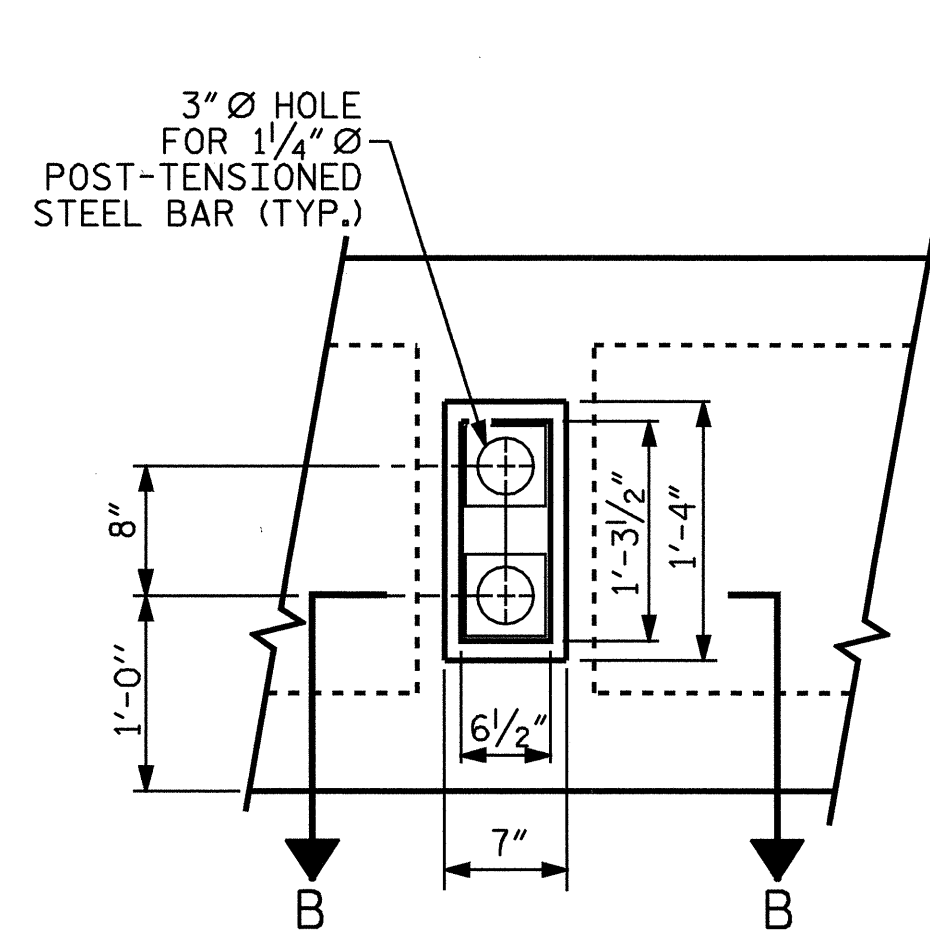


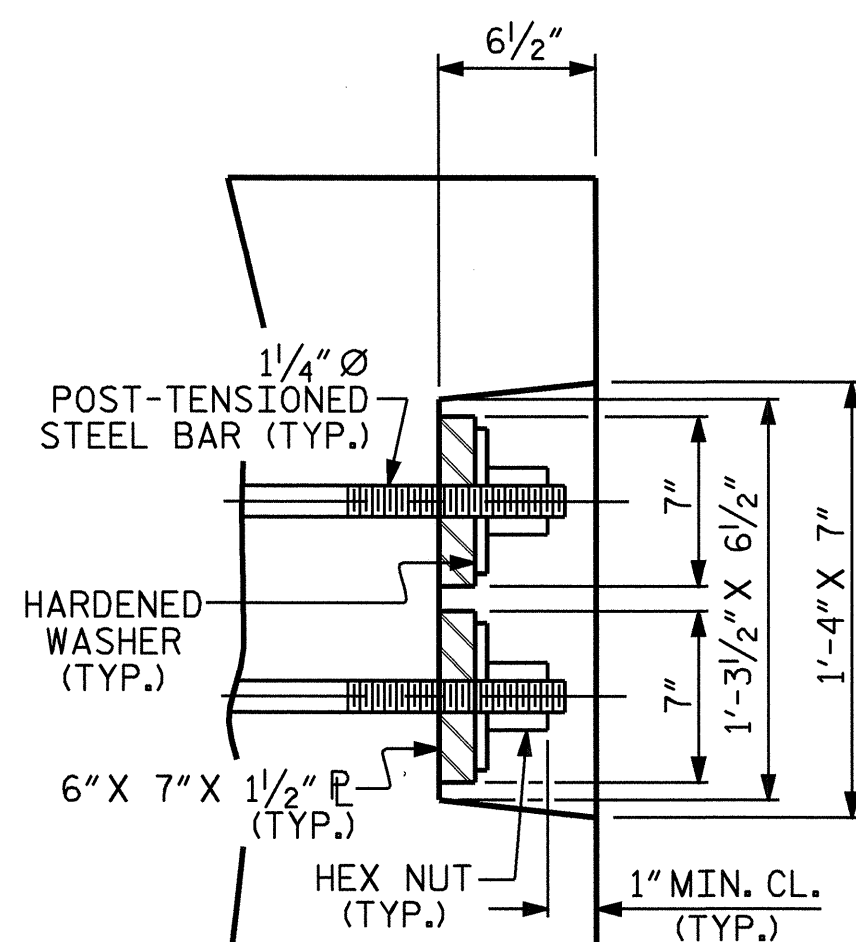
ELEVATION VIEW



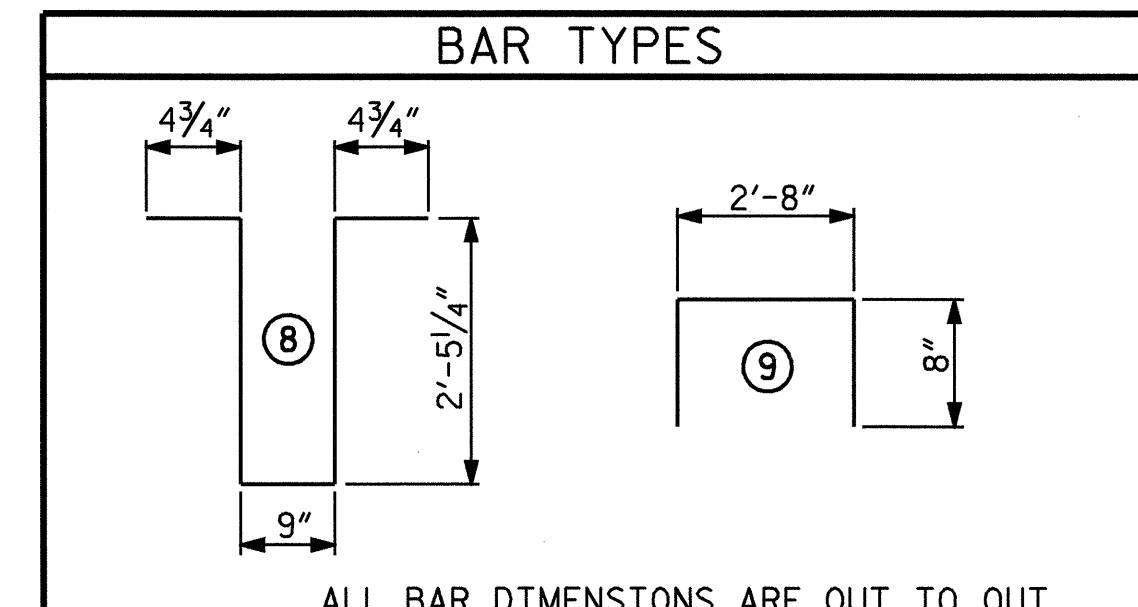
DETAIL "A"



ELEVATION VIEW

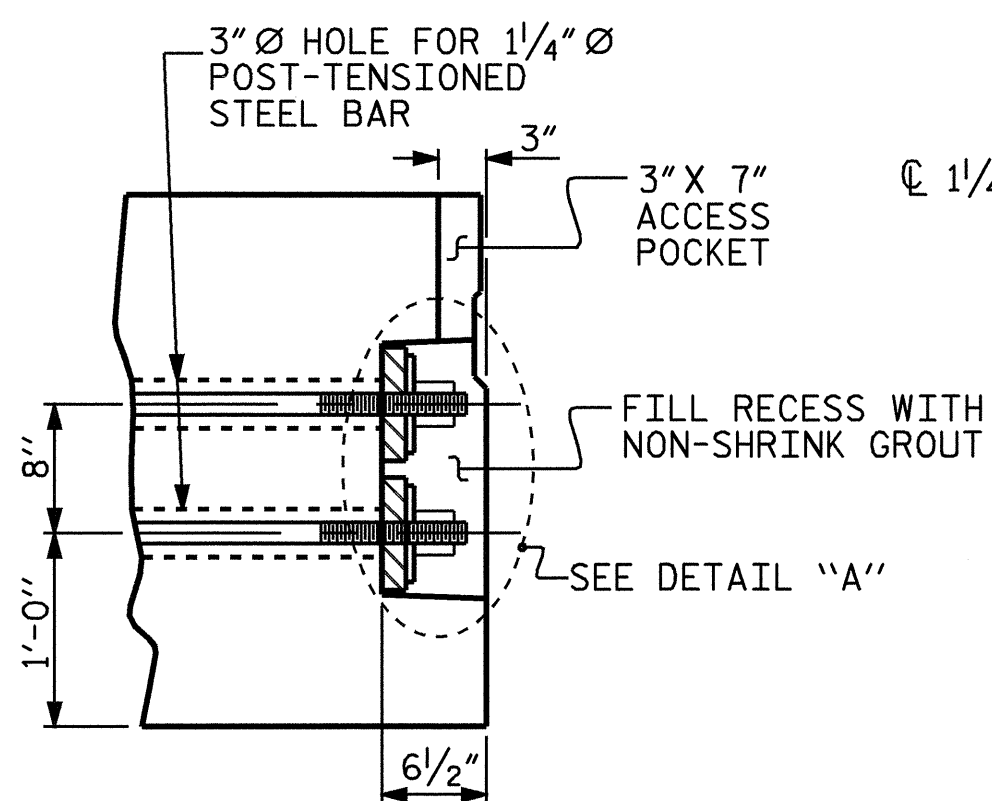


DETAIL "C"

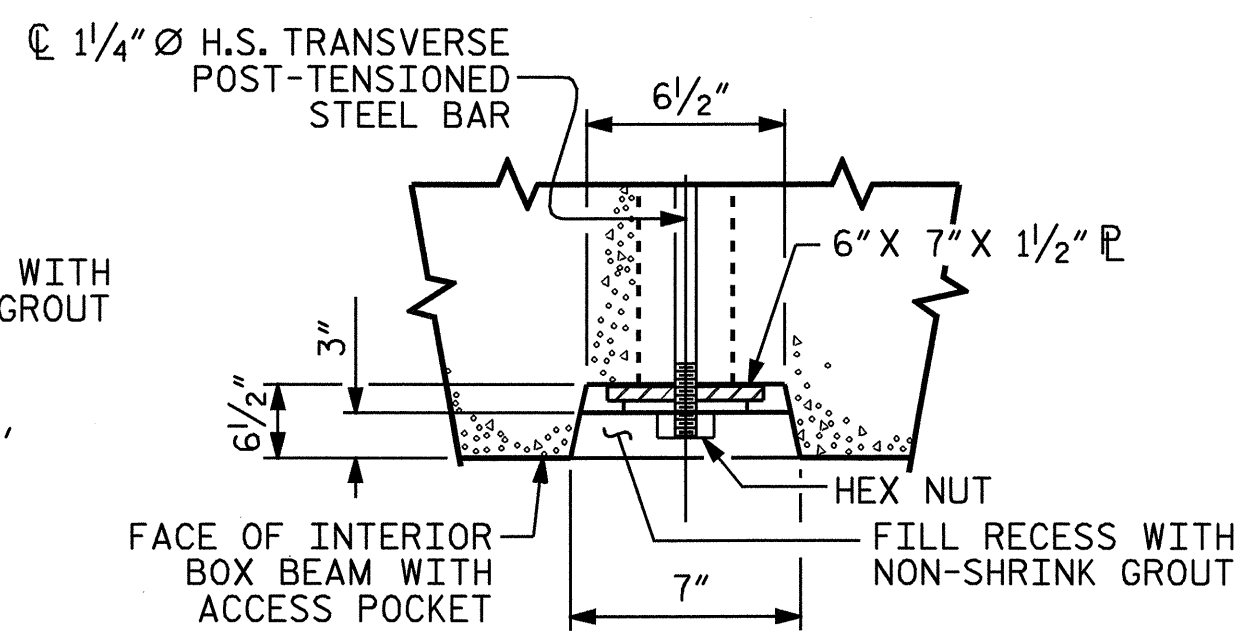


ALL BAR DIMENSIONS ARE OUT TO OUT

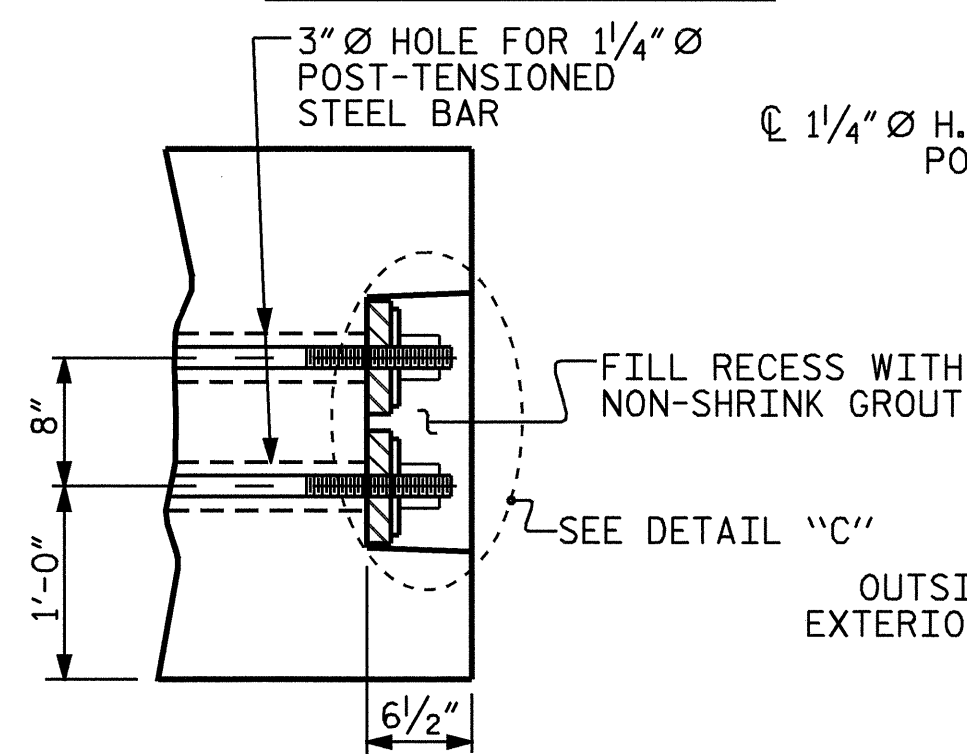
BILL OF MATERIAL FOR ONE DIAPHRAGM					
BAR	NUMBER	SIZE	TYPE	LENGTH	WEIGHT
D1	3	#4	8	6'-5"	13
D2	6	#4	9	4'-0"	16
D3	2	#4	STR	2'-8"	4
REINFORCING STEEL					33 LBS.



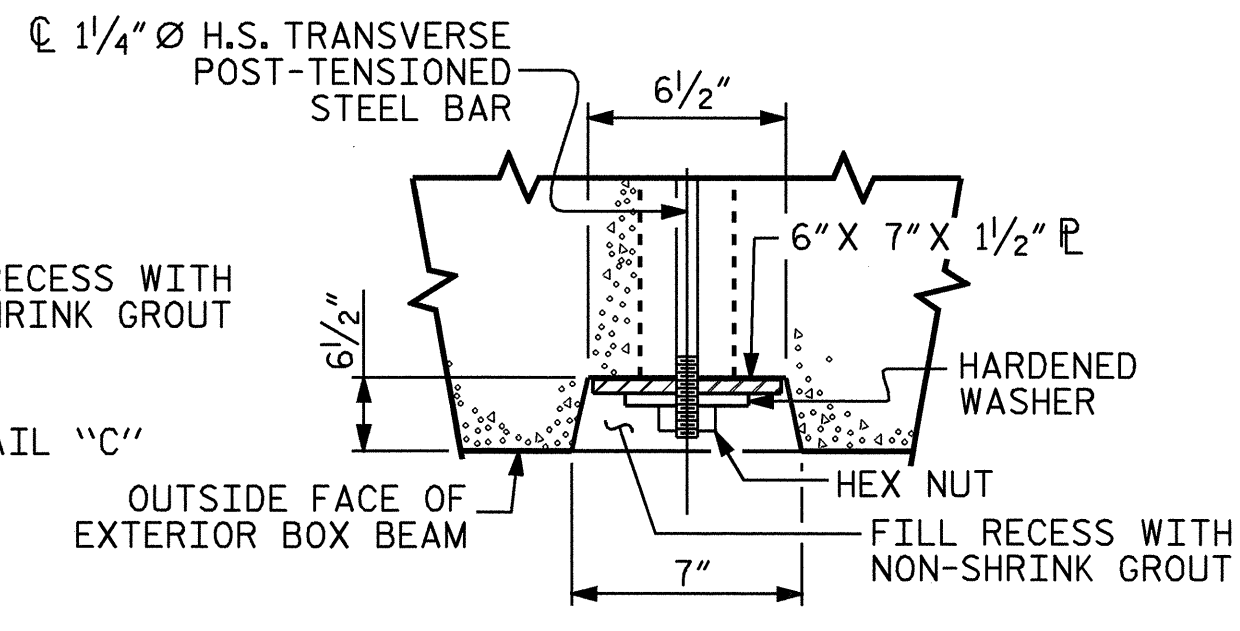
PART SECTION AT POCKET



SECTION C-C



PART SECTION AT RECESS



SECTION B-B

THE ANCHOR PLATE, HARDENED WASHER (BEVELED WASHER) AND THE HEX NUT SHALL BE GALVANIZED.

AFTER ALL BARS ARE FULLY TENSIONED, CUT H.S. TRANSVERSE POST-TENSIONED STEEL BARS SO THAT P.T. BARS ARE FULLY EMBEDDED IN NON-SHRINK GROUT.

ACCESS POCKET DETAIL

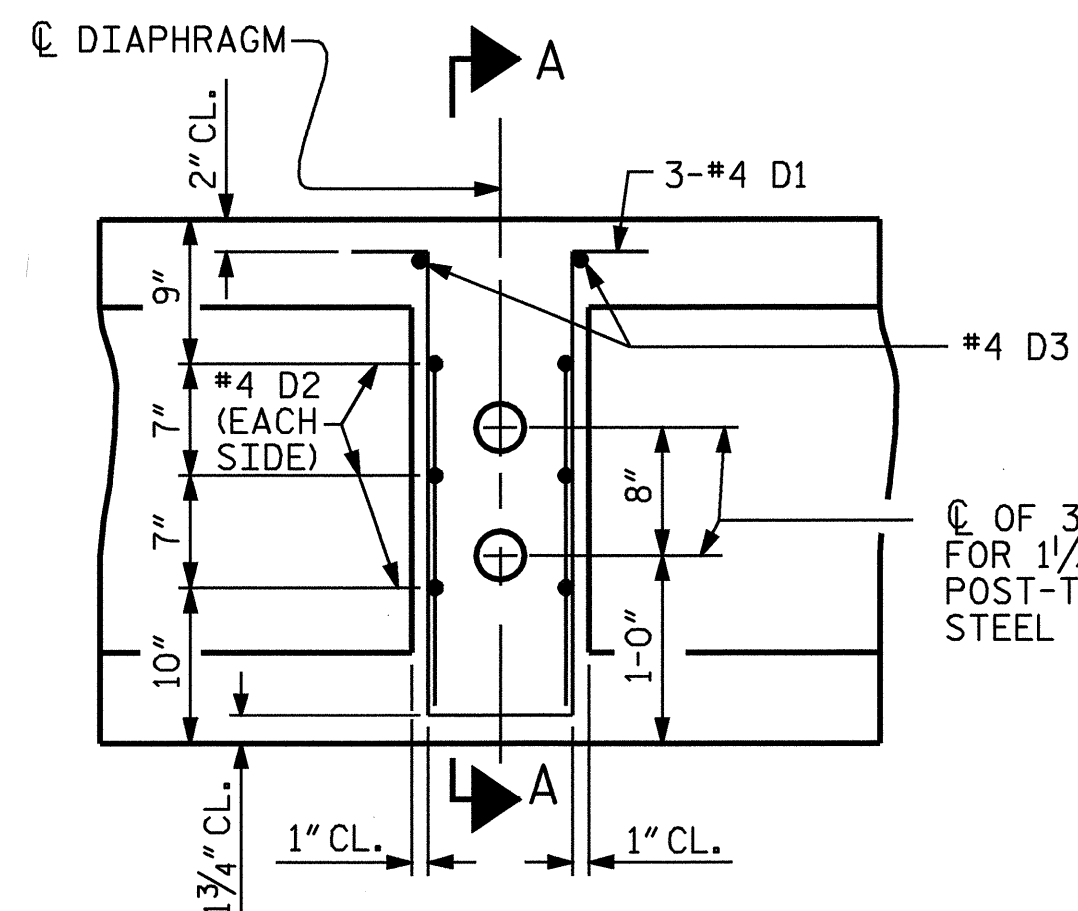
SHOWING DOUBLE GROUTED RECESS AT END OF POST-TENSIONED STEEL BAR OF INTERIOR 33" BOX BEAM WITH ACCESS POCKET

THE ANCHOR PLATE, HARDENED WASHER (BEVELED WASHER) AND THE HEX NUT SHALL BE GALVANIZED.

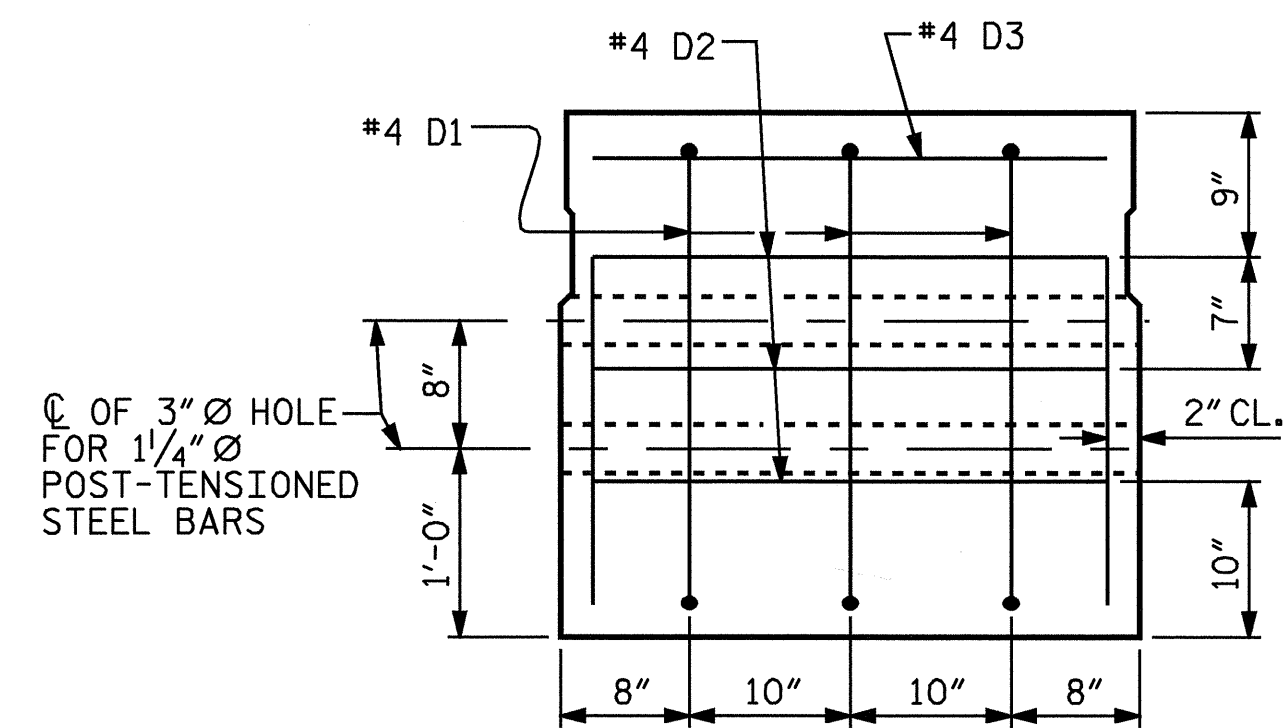
AFTER ALL BARS ARE FULLY TENSIONED, CUT H.S. TRANSVERSE POST-TENSIONED STEEL BARS SO THAT P.T. BARS ARE FULLY EMBEDDED IN NON-SHRINK GROUT.

DOUBLE GROUTED RECESS AT END OF POST-TENSIONED STEEL BAR OF EXTERIOR 33" BOX BEAM

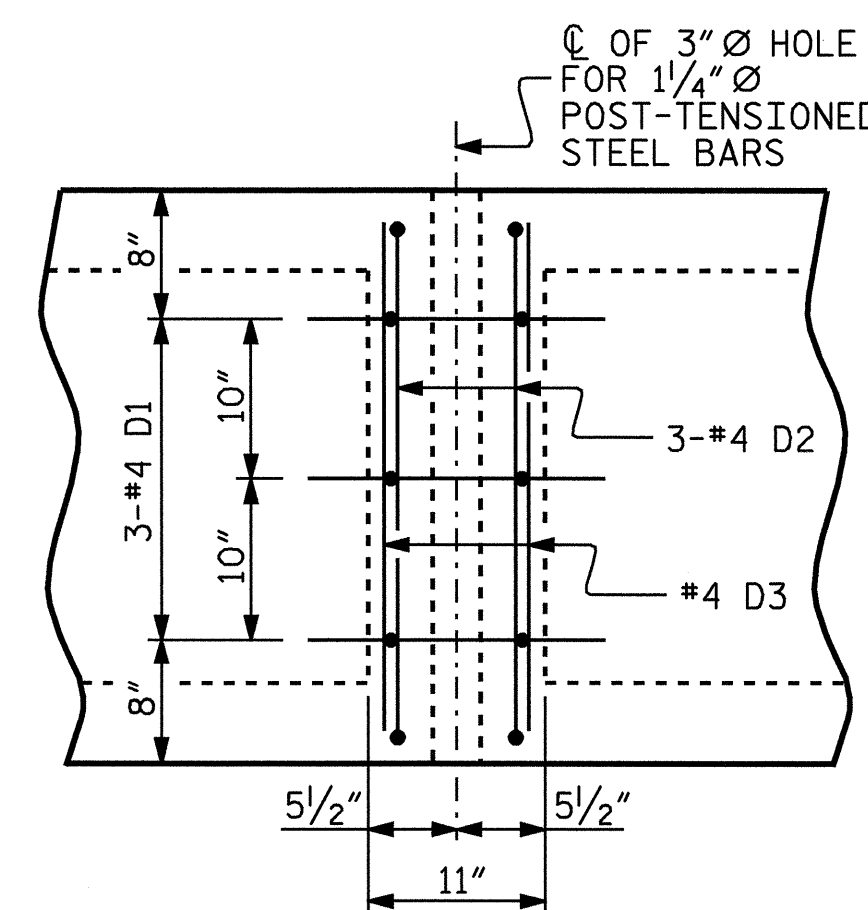
DIAPHRAGMS REQUIRED			
	NUMBER	REINFORCING STEEL PER DIAPH. (LBS.)	TOTAL REINFORCING STEEL FOR DIAPHRAGMS (LBS.)
SPAN A	51	33	1683
SPAN B	64	33	2112
SPAN C	38	33	1254
TOTAL			5049



ELEVATION



SECTION A-A



PLAN

DOUBLE DIAPHRAGM FOR 33" BOX BEAM

#4 "S" BARS NOT SHOWN. #4 "S" BARS MAY BE SHIFTED SLIGHTLY TO CLEAR 3" Ø HOLE.

PROJECT NO. B-3664
 HENDERSON COUNTY
 STATION: 20+95.00-L-

SHEET 9 OF 10

STATE OF NORTH CAROLINA
 DEPARTMENT OF TRANSPORTATION
 RALEIGH
 STANDARD
 3'-0" X 2'-9"
 PRESTRESSED CONCRETE
 BOX BEAM UNIT

MARCH 2005

REVISIONS				SHEET NO.
NO.	BY:	DATE:	NO.	DATE:
1			3	
2			4	

ASSEMBLED BY : V. X. NGUYEN	DATE : 3-15-05
CHECKED BY : D. HODGE	DATE : 5-05
DRAWN BY : TLA 3/05	ADDED
CHECKED BY :	

03-JUN-2005 08:50
 R:\STRUCT\B3664\vnnguyen\MICROS\B-3664\2.DGN
 vnnguyen



STD. NO. PCBB5