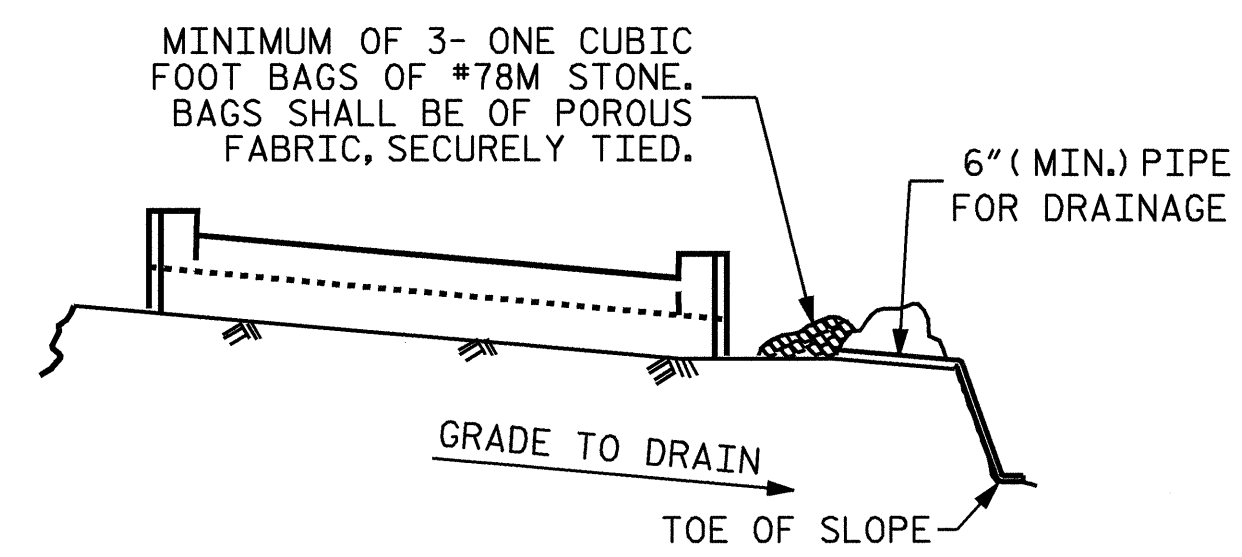


BILL OF MATERIAL

END BENT NO.1

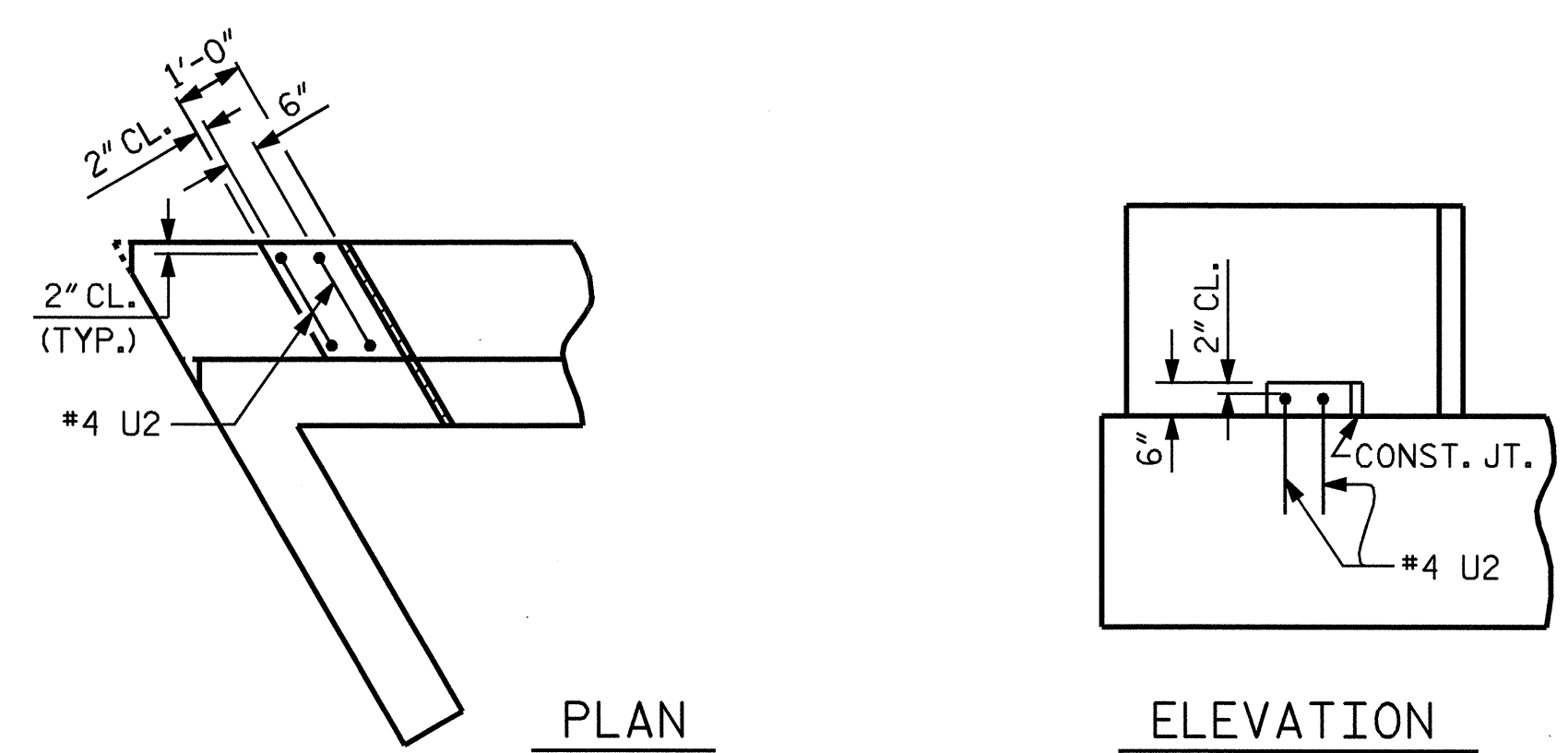
BAR	NO.	SIZE	TYPE	LENGTH	WEIGHT
B1	8	#9	1	54'-0"	1469
B2	2	#5	STR	51'-6"	107
B3	8	#4	STR	27'-0"	144
B4	13	#4	STR	2'-5"	21
D1	26	#8	STR	2'-3"	156
H1	7	#4	3	6'-8"	31
H2	7	#4	3	6'-5"	30
H3	7	#4	2	8'-4"	39
H4	7	#4	2	8'-9"	41
H5	8	#4	STR	2'-10"	15
K1	8	#4	STR	27'-0"	144
S1	46	#4	4	3'-2"	97
S2	46	#4	5	7'-5"	228
S3	24	#4	6	6'-6"	104
U1	45	#4	7	3'-8"	110
U2	4	#4	7	4'-7"	12
V1	90	#4	STR	4'-1"	245
V2	20	#4	STR	5'-4"	71
V3	24	#4	STR	5'-6"	88
REINFORCING STEEL				=	3152 LBS
CLASS A CONCRETE					
POUR #1: CAP & BOT. OF WINGS				14.4	C.Y.
POUR #2: BACKWALL & TOP OF WINGS				5.8	C.Y.
POUR #3: LATERAL GUIDE				0.1	C.Y.
TOTAL CLASS A CONCRETE				20.3	C.Y.
HP 12 X 53 STEEL PILES					
NO. 12				480	LIN. FT.
STEEL PILE POINTS					NO. 12



BAGGED STONE AND PIPE SHALL BE PLACED IMMEDIATELY AFTER COMPLETION OF END BENT EXCAVATION. PIPE MAY BE EITHER CONCRETE, CORRUGATED STEEL, CORRUGATED ALUMINUM ALLOY, OR CORRUGATED PLASTIC. PERFORATED PIPE WILL NOT BE ALLOWED.

BAGGED STONE SHALL REMAIN IN PLACE UNTIL THE ENGINEER DIRECTS THAT IT BE REMOVED. THE CONTRACTOR SHALL REMOVE AND DISPOSE OF SILT ACCUMULATIONS AT BAGGED STONE WHEN SO DIRECTED BY THE ENGINEER. BAGS SHALL BE REMOVED AND REPLACED WHENEVER THE ENGINEER DETERMINES THAT THEY HAVE DETERIORATED AND LOST THEIR EFFECTIVENESS.

NO SEPARATE PAYMENT WILL BE MADE FOR THIS WORK AND THE ENTIRE COST OF THIS WORK SHALL BE INCLUDED IN THE UNIT CONTRACT PRICE BID FOR THE SEVERAL PAY ITEMS.



PROJECT NO. B-3664
HENDERSON COUNTY
 STATION: 20+95.00 -L-
 SHEET 3 OF 3

STATE OF NORTH CAROLINA
 DEPARTMENT OF TRANSPORTATION
 RALEIGH

**SUBSTRUCTURE
 END BENT NO.1**

REVISIONS						SHEET NO.
NO.	BY:	DATE:	NO.	BY:	DATE:	S-16
1			3			TOTAL SHEETS
2			4			27



DRAWN BY: L.L. MURPHY DATE: 04-05
 CHECKED BY: D. HODGE DATE: 05-05