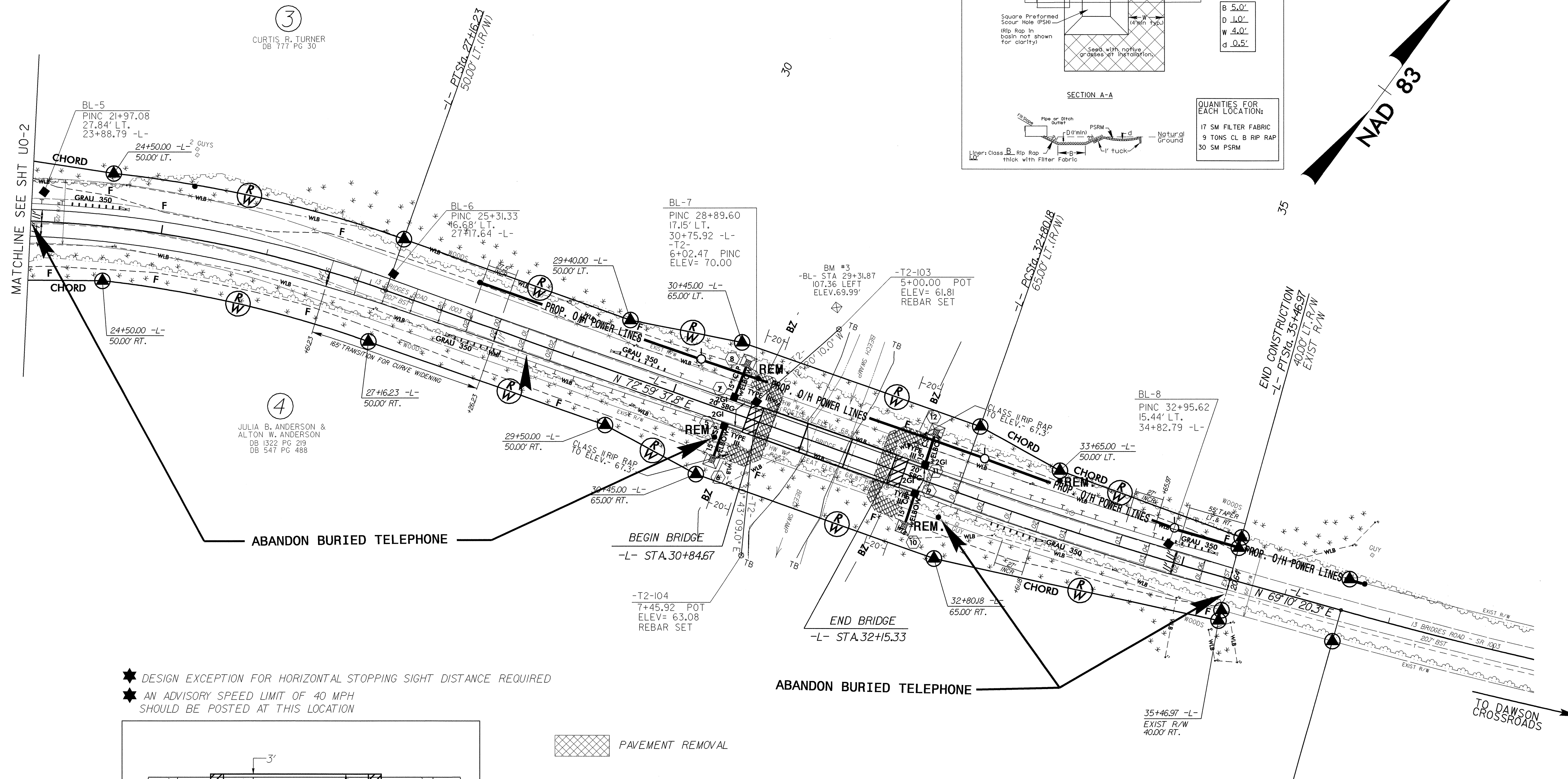
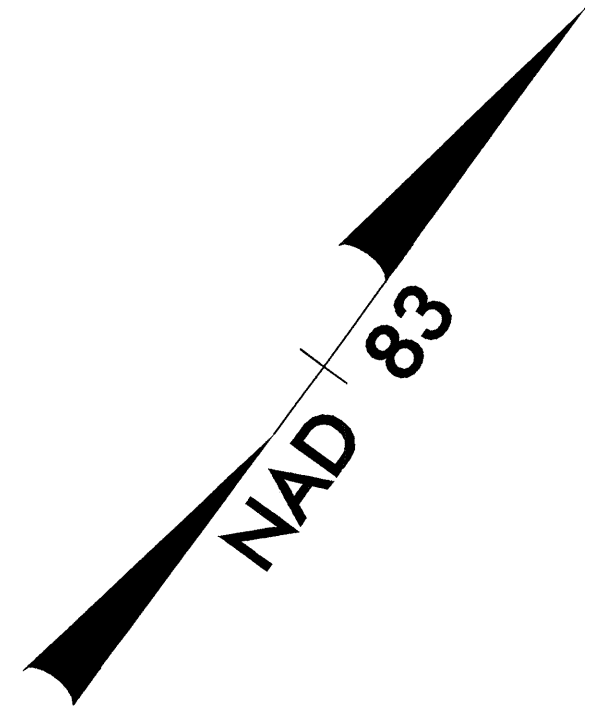
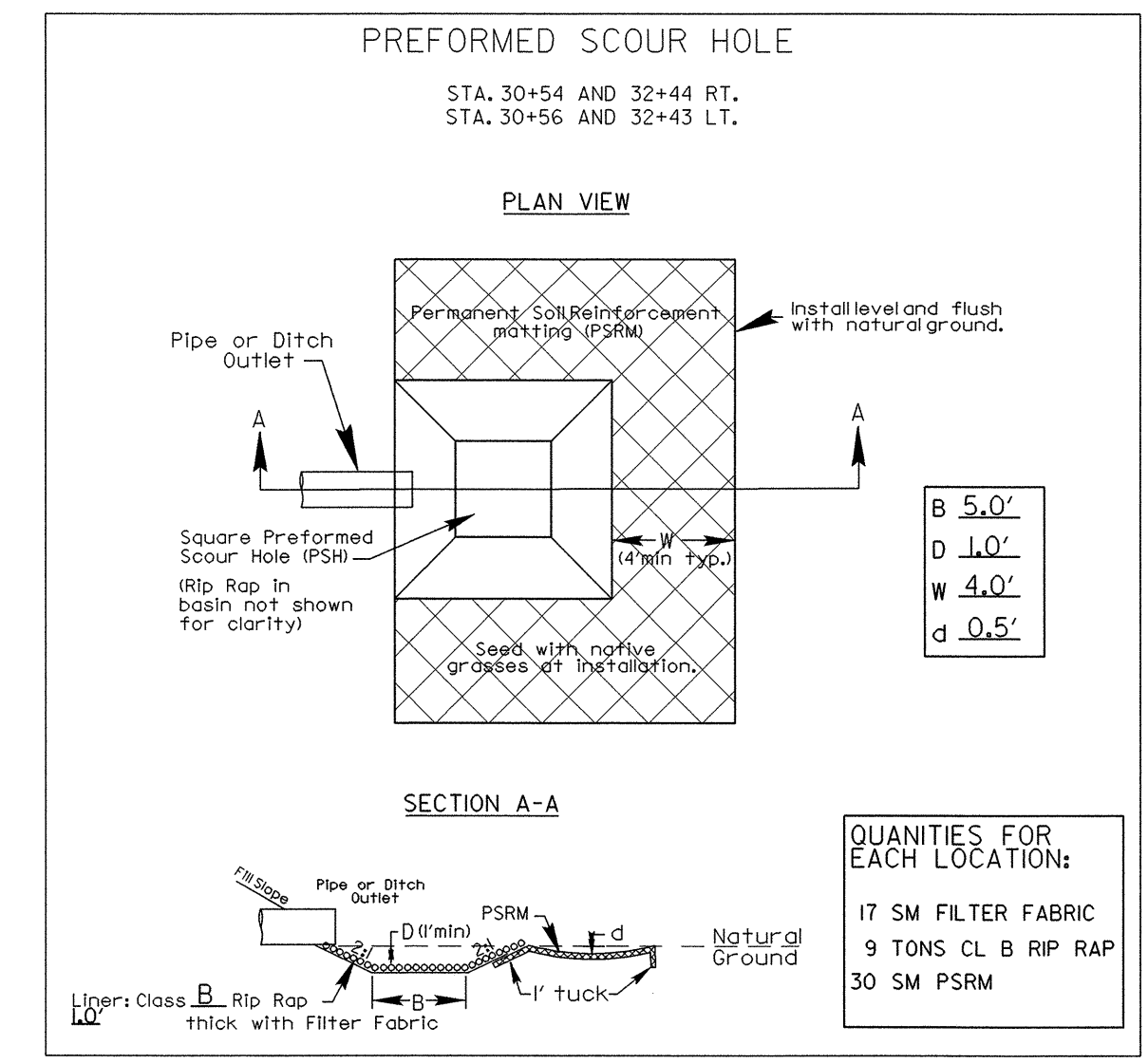


UTILITIES BY OTHERS

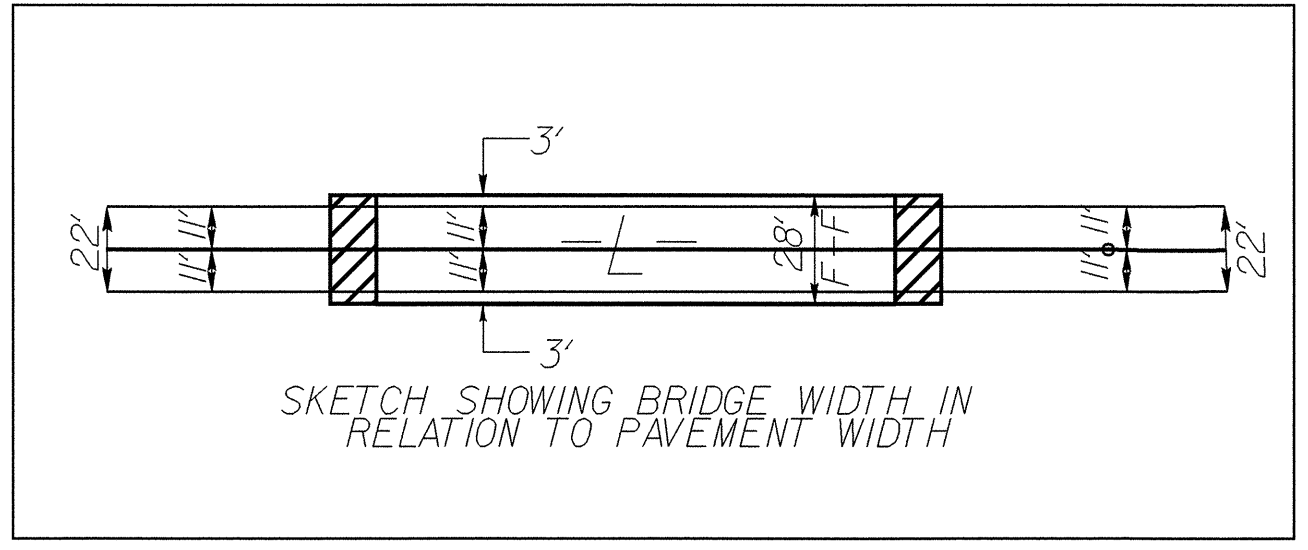
NOTE:
ALL PROPOSED UTILITY WORK SHOWN ON THIS SHEET WILL BE DONE BY OTHERS

-L- CURVES

PI Sta 23+04.04 Δ = 43° 25' 27.4" (RT) D = 5' 00' 00.0" L = 868.49' T = 456.30' * R = 1,145.92' SE = SEE PLANS CRV WIDENING = 3'	PI Sta 34+13.62 Δ = 3° 49' 17.5" (LT) D = 1' 25' 56.6" L = 266.79' T = 133.45' SE = SEE PLANS	PI Sta 38+39.13 Δ = 4° 42' 16.4" (LT) D = 1' 16' 23.7" L = 369.50' T = 184.85' R = 4,500.00' SE = EXIST
---	--	---



- ★ DESIGN EXCEPTION FOR HORIZONTAL STOPPING SIGHT DISTANCE REQUIRED
- ★ AN ADVISORY SPEED LIMIT OF 40 MPH SHOULD BE POSTED AT THIS LOCATION



NOTE: USE FABRIC FOR SOIL STABILIZATION IN LIEU OF UNDERCUT AT
-L- STA 21+60 TO 31+00 (RT), 21+60 TO 23+75 (LT), 26+50 TO 31+00 (LT),
32+10 TO 35+47 (RT) AND 32+10 TO 35+47 (LT)
FROM EXISTING TOE OF SLOPE TO PROPOSED TOE OF SLOPE

QUANTITY = 3671.71 SY

END TIP PROJECT B-3467
-L- PCSta. 36+54.28
EXIST R/W LT. & RT.

NOTE: TB = TOP OF BANK
BZ = BUFFER ZONE

SEE SHEET 6 FOR -L- PROFILE

8/17/99
18-OCT-2004 08:52
R:\Utilities\Proj\B3467_r.dwg ps5_u03.dgn
Author: AT Dis2151g