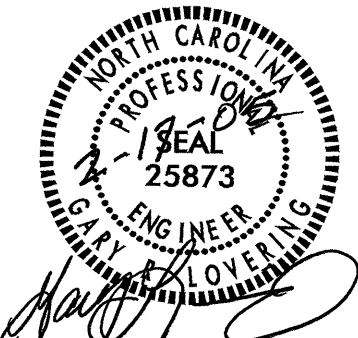
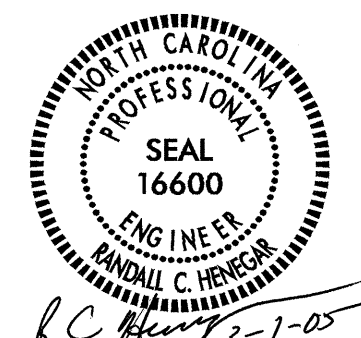
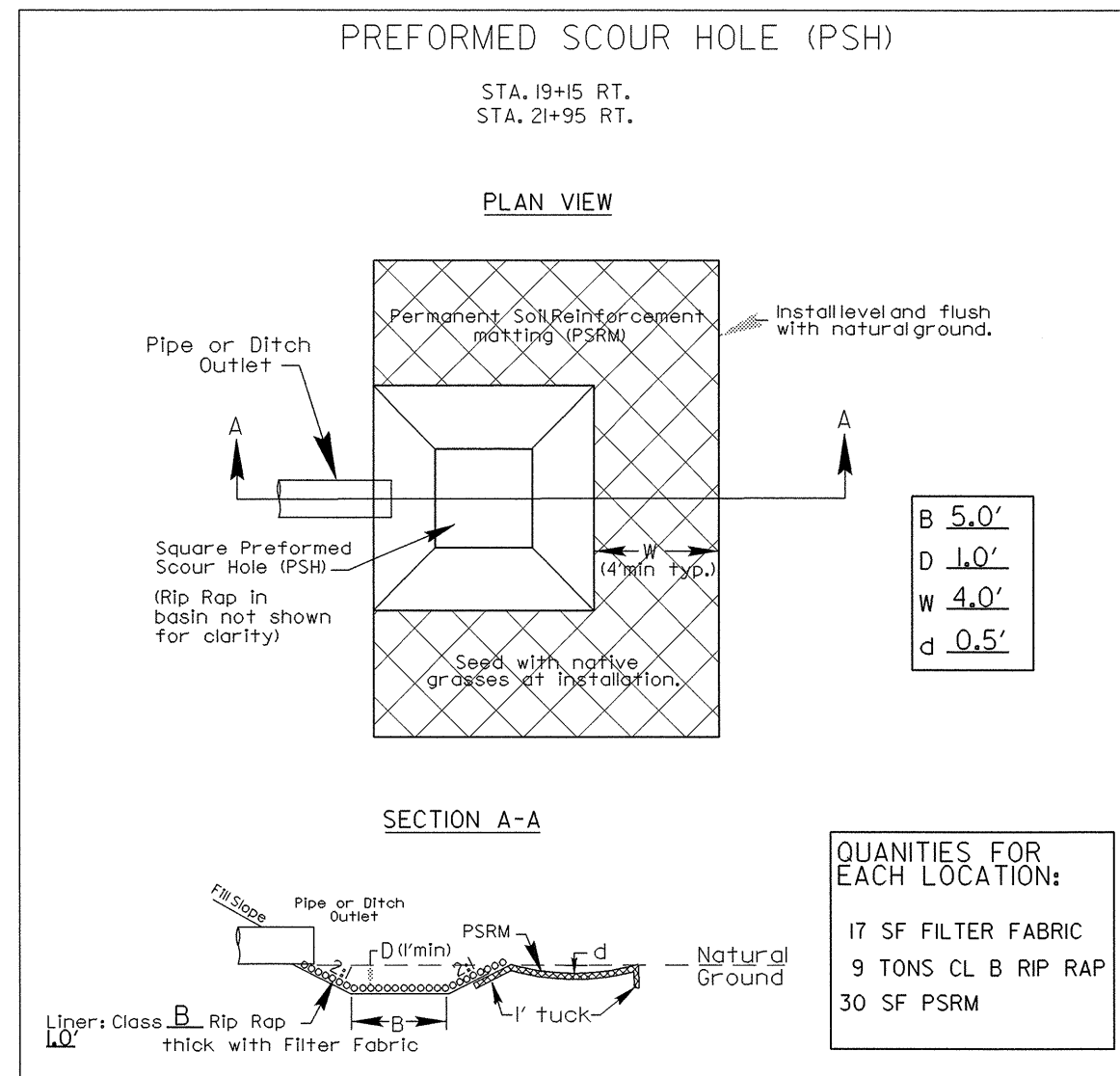
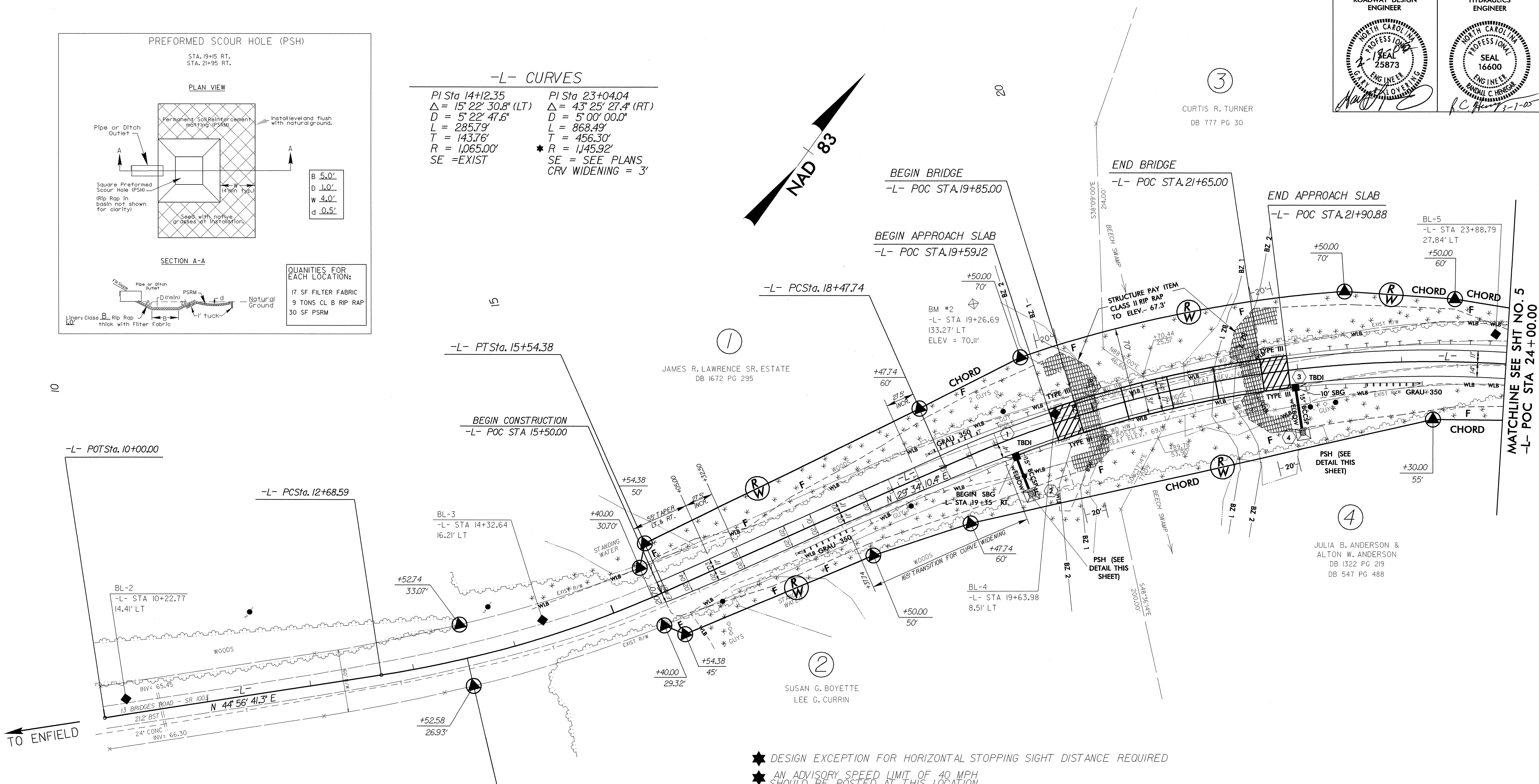


PROJECT REFERENCE NO. B-3467		SHEET NO. 4	
RW SHEET NO.			
ROADWAY DESIGN ENGINEER		HYDRAULICS ENGINEER	
			



-L- CURVES

PI Sta 14+12.35	PI Sta 23+04.04
$\Delta = 15^\circ 22' 30.8"$ (LT)	$\Delta = 43^\circ 25' 27.4"$ (RT)
D = 5' 22' 47.6"	D = 5' 00' 00.0"
L = 285.79'	L = 868.49'
T = 143.76'	T = 456.30'
R = 1,065.00'	* R = 1,45.92'
SE = EXIST	SE = SEE PLANS
	CRV WIDENING = 3'



BEGIN TIP PROJECT B-3467
-L- STA. 13+52.58

DATUM DESCRIPTION

THE LOCALIZED COORDINATE SYSTEM DEVELOPED FOR THIS PROJECT IS BASED ON THE STATE PLANE COORDINATES ESTABLISHED BY NCDOT FOR MONUMENT "B4134-1" WITH NAD 1983/95 STATE PLANE GRID COORDINATES OF NORTHING: 874849.5068(11) EASTING: 244655.15209(11) THE AVERAGE COMBINED GRID FACTOR USED ON THIS PROJECT (GROUND TO GRID) IS: 0.99999427

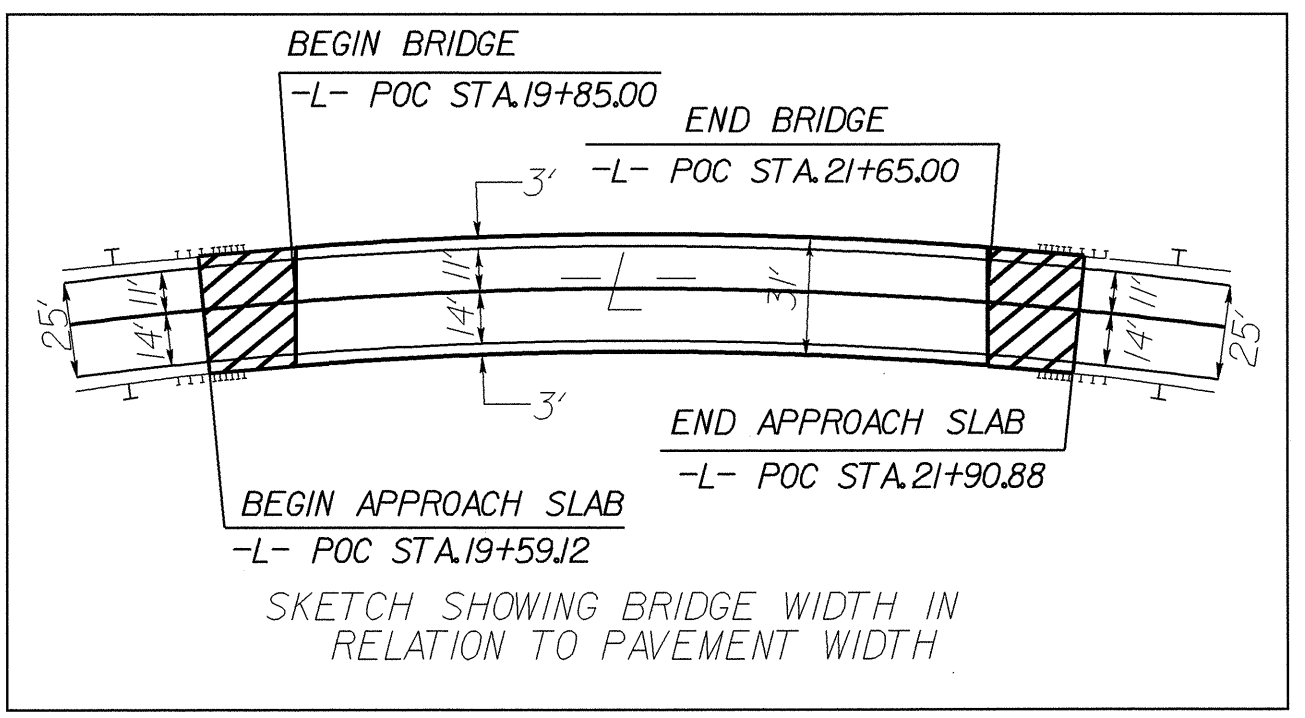
THE N.C. LAMBERT GRID BEARING AND LOCALIZED HORIZONTAL GROUND DISTANCE FROM "B4134-1" TO -L- STATION 10+00.00 IS S 87° 46' 39.28" W 222565.161 FT.

ALL LINEAR DIMENSIONS ARE LOCALIZED HORIZONTAL DISTANCES VERTICAL DATUM USED IS NAVD 88

NOTE: USE FABRIC FOR SOIL STABILIZATION IN LIEU OF UNDERCUT AT -L- STA 16+25 TO 20+00 (RT), -L- STA 17+25 TO 20+00 (LT) AND -L- STA 21+60 TO 23+75 (LT/RT) FROM EXISTING TOE OF SLOPE TO PROPOSED TOE OF SLOPE. SEE SHEET 3-B FOR SUMMARY TOTALS. QUANTITY = 2250.00 SY

EXTEND PAVEMENT TO SHOULDER BERM GUTTER.

ALL EXISTING PAVEMENT WITHIN CONSTRUCTION LIMITS SHALL BE REMOVED.



SEE SHEET 6 FOR -L- PROFILE
 SEE SHEETS S-1 TO S-33 FOR BRIDGE DESIGN

15-FEB-2005 13:13
 c:\pcoj\0246...-d...psrh4.dgn
 mvelo