

NOTES

THE COST OF THE BARRIER RAIL ON THE APPROACH SLAB SHALL BE INCLUDED IN THE LUMP SUM CONTRACT PRICE BID FOR BRIDGE APPROACH SLABS.

APPROACH SLAB SHALL NOT BE CONSTRUCTED PRIOR TO COMPLETION OF THE BRIDGE DECK.

FOR REINFORCED BRIDGE APPROACH FILL INCLUDING FABRIC, IMPERMEABLE GEOMEMBRANE, 4" Ø DRAINAGE PIPE, #78M STONE, AND SELECT MATERIAL, SEE ROADWAY PLANS.

TEMPORARY DRAINAGE AND TEMPORARY BERM AND SLOPE DRAINS WILL BE PAID FOR UNDER THE LUMP SUM PRICE FOR BRIDGE APPROACH SLAB.

AREA BETWEEN THE WINGWALL AND APPROACH SLAB SHALL BE GRADED TO DRAIN THE WATER AWAY FROM THE FILL FACE OF THE BRIDGE AND SHALL BE PAVED. SEE ROADWAY PLANS.

THE 6" COMP. A.B.C. SHALL EXTEND 10'-0" BEYOND THE END OF THE APPROACH SLAB AND 1'-0" OUTSIDE OF EACH EDGE OF SLAB.

THE CONTRACTOR MAY USE 4" TYPE B-25.0B ASPHALT CONCRETE BASE COURSE IN LIEU OF 6" COMP. A.B.C. IF THIS OPTION IS USED, THE BASE COURSE SHALL EXTEND 1'-0" BEYOND THE END OF THE APPROACH SLAB AND THE WIDTH SHALL BE THE SAME AS THAT OF THE APPROACH SLAB.

THE CONTRACTOR MAY USE 5" CLASS "A" CONCRETE BASE IN LIEU OF 6" COMP. A.B.C. IF THIS OPTION IS USED, THE CONCRETE BASE SHALL EXTEND 1'-0" BEYOND THE END OF THE APPROACH SLAB AND THE WIDTH SHALL BE THE SAME AS THAT OF THE APPROACH SLAB. THE CONCRETE SHALL BE FINISHED TO A SMOOTH SURFACE AND A LAYER OF 30 LB ROOFING FELT SHALL BE PLACED BETWEEN THE CONCRETE BASE AND THE APPROACH SLAB TO PREVENT BOND. THE APPROACH SLAB SHALL NOT BE CAST UNTIL THE CONCRETE BASE HAS REACHED AN AGE OF THREE CURING DAYS.

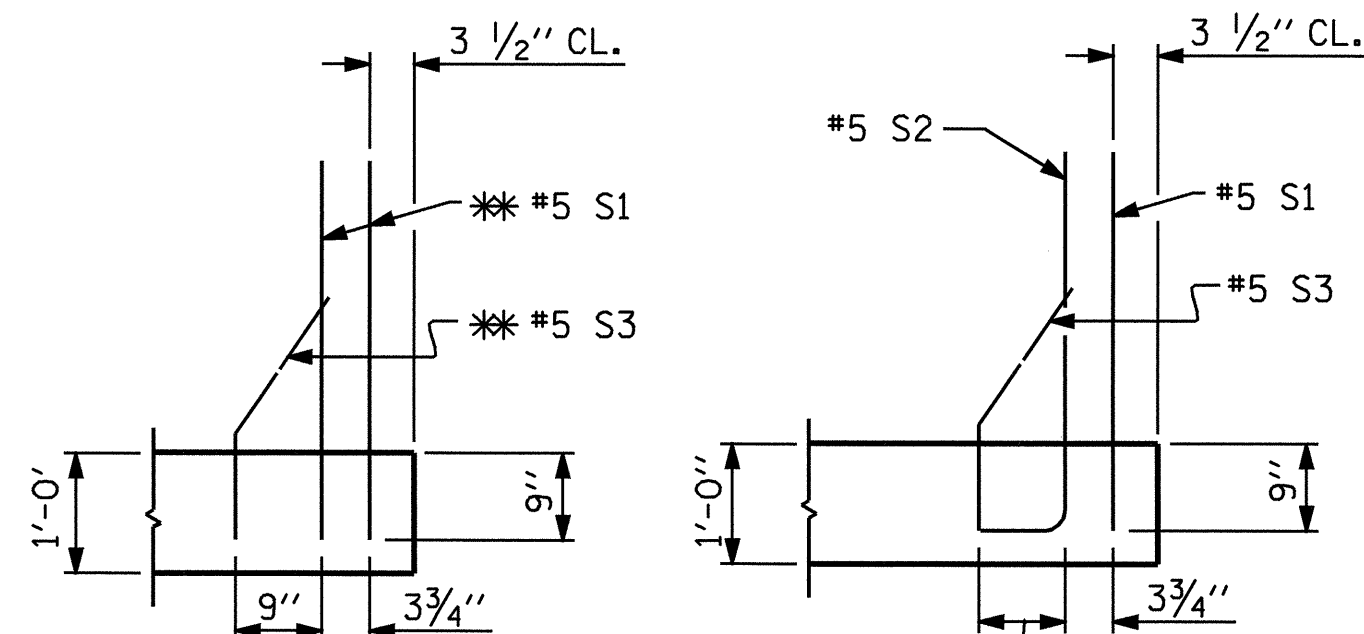
THE JOINT SHALL BE SAWSD PRIOR TO THE CASTING OF THE BARRIER RAIL.

WITH EVAZOTE JOINT SEAL

FOR EVAZOTE JOINT SEALS, SEE SPECIAL PROVISIONS.

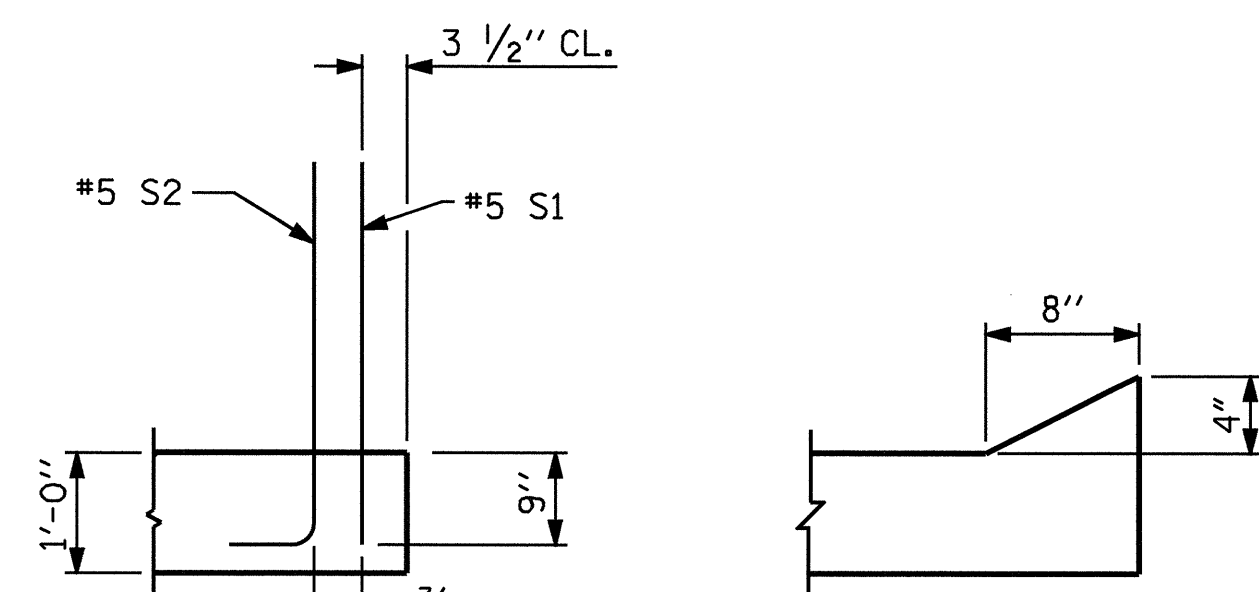
FOR ELASTOMERIC CONCRETE, SEE SPECIAL PROVISIONS.

THE NOMINAL UNCOMPRESSED SEAL WIDTH OF THE EVAZOTE JOINT SEAL SHALL BE 2 1/2".



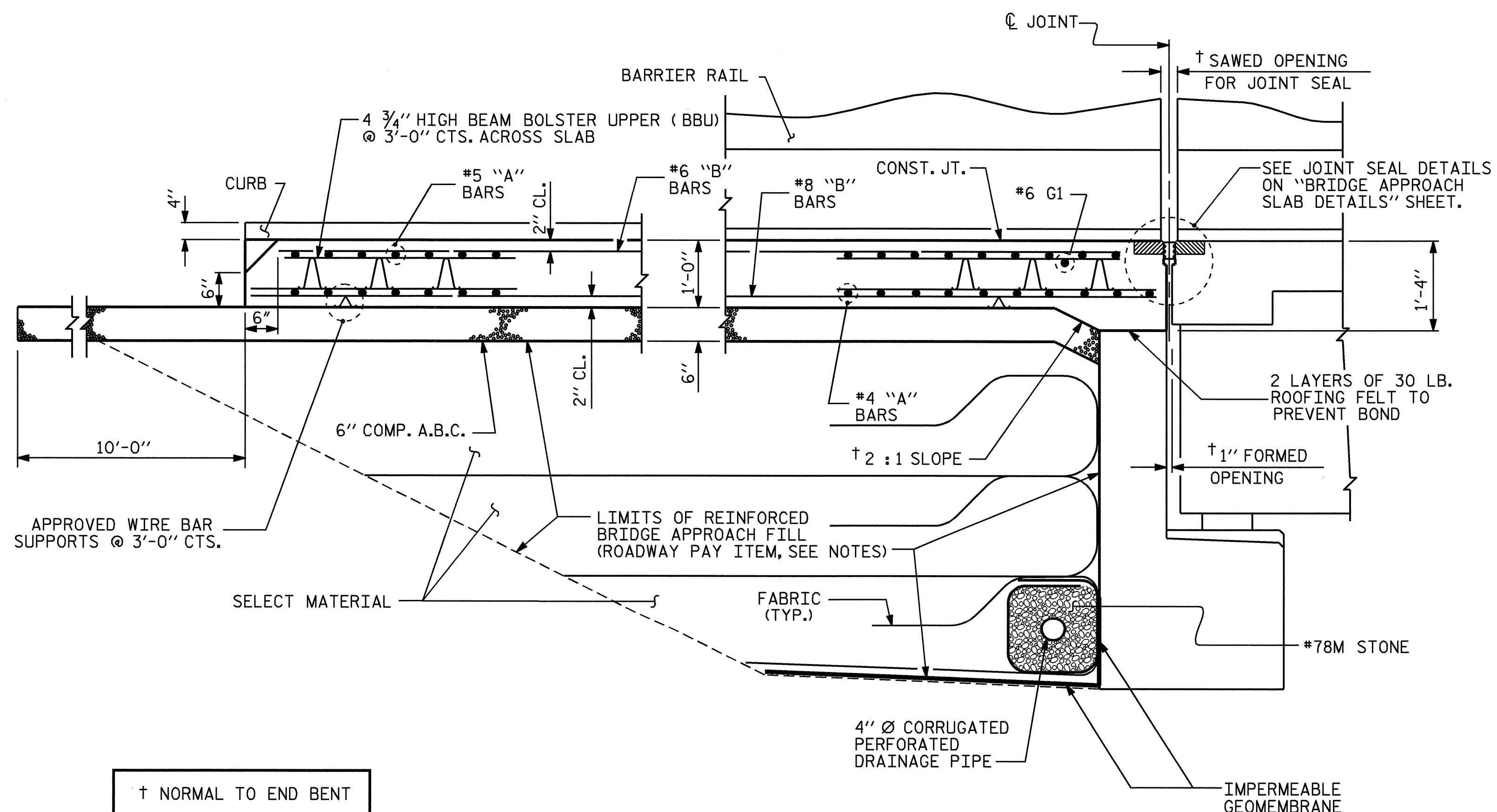
SECTION K-K
** ADHESIVELY ANCHORED

SECTION L-L



SECTION M-M

SECTION N-N



† NORMAL TO END BENT

SECTION THRU SLAB

ASSEMBLED BY : A.S. CALLAWAY DATE : 8/4/04
 CHECKED BY : N.Q. TRAN DATE : 9/28/04
 DRAWN BY : LES 8/01 REV. 5/7/03R RWW/JTE
 CHECKED BY : RDR 8/01

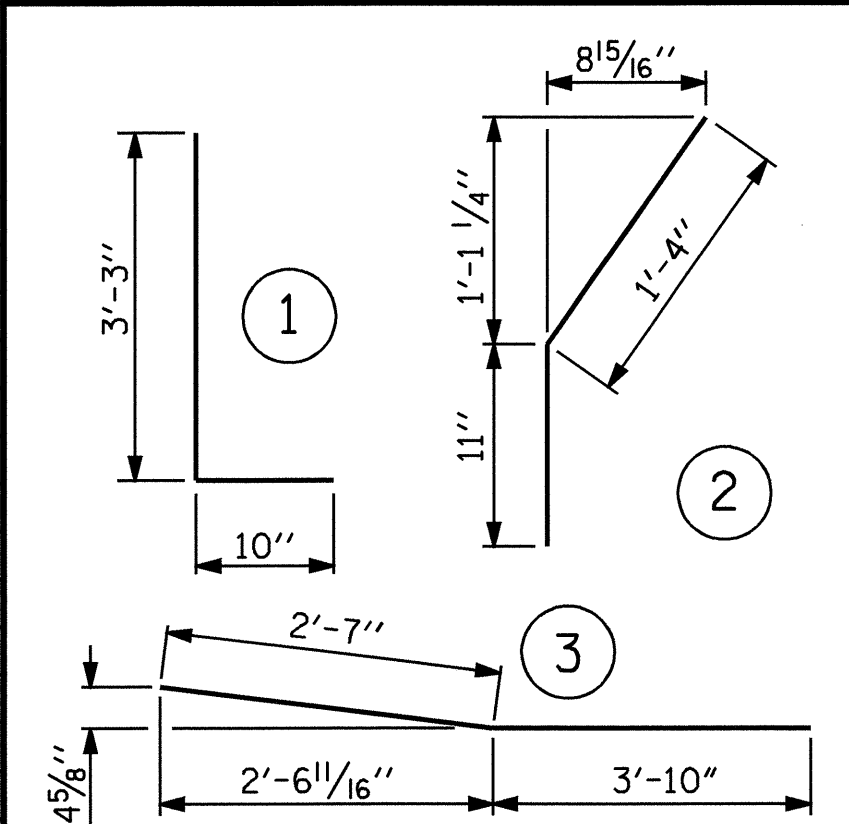
04-APR-2005 10:25
 S:\P66\SquadL\B3467.v8\str1\scallaway\B3467.ed.AS.01.dgn
 lsuttt

BILL OF MATERIAL
FOR ONE APPROACH SLAB (2 REQ'D)

BAR	NO.	SIZE	TYPE	LENGTH	WEIGHT	BAR	NO.	SIZE	TYPE	LENGTH	WEIGHT	BAR	NO.	SIZE	TYPE	LENGTH	WEIGHT
*A1	26	#5	STR	33'-6"	908	*B28	2	#6	STR	26'-11"	81	B72	1	#8	STR	11'-9"	31
*A2	6	#5	STR	33'-8"	211	*B29	2	#6	STR	27'-0"	81						
*A3	17	#5	STR	33'-11"	601	*B30	2	#6	STR	27'-1"	81	*B73	7	#5	STR	11'-9"	86
*A4	1	#5	STR	26'-8"	28	*B31	2	#6	STR	27'-2"	82	*B74	7	#5	STR	11'-7"	85
*A5	1	#5	STR	21'-2"	22	*B32	2	#6	STR	27'-3"	82	*B75	2	#5	3	6'-5"	13
*A6	1	#5	STR	15'-7"	16	*B33	2	#6	STR	27'-5"	82						
*A7	1	#5	STR	10'-0"	10	*B34	2	#6	STR	27'-6"	83	*G1	1	#6	STR	34'-0"	51
*A8	1	#5	STR	4'-6"	5	*B35	2	#6	STR	27'-7"	83						
						*B36	1	#6	STR	11'-9"	18	*S1	56	#5	STR	3'-3"	190
												*S2	40	#5	1	4'-1"	170
A10	98	#4	STR	17'-10"	1167	B37	1	#8	STR	11'-6"	31	*S3	20	#5	2	2'-3"	47
A11	1	#4	STR	29'-11"	20	B38	1	#8	STR	24'-9"	66						
A12	1	#4	STR	24'-5"	16	B39	2	#8	STR	24'-10"	133						
A13	1	#4	STR	18'-10"	13	B40	2	#8	STR	24'-11"	133						
A14	1	#4	STR	13'-4"	9	B41	2	#8	STR	25'-0"	134						
A15	1	#4	STR	7'-9"	5	B42	2	#8	STR	25'-2"	134						
						B43	2	#8	STR	25'-3"	135						
						B44	2	#8	STR	25'-4"	135						
*B1	1	#6	STR	11'-6"	17	B45	2	#8	STR	25'-5"	136						
*B2	1	#6	STR	24'-3"	36	B46	2	#8	STR	25'-6"	137						
*B3	2	#6	STR	24'-4"	73	B47	2	#8	STR	25'-7"	137						
*B4	2	#6	STR	24'-5"	73	B48	2	#8	STR	25'-9"	138						
*B5	2	#6	STR	24'-7"	74	B49	2	#8	STR	25'-10"	138						
*B6	2	#6	STR	24'-8"	74	B50	2	#8	STR	25'-11"	139						
*B7	2	#6	STR	24'-9"	74	B51	2	#8	STR	26'-0"	139						
*B8	2	#6	STR	24'-10"	75	B52	2	#8	STR	26'-1"	140						
*B9	2	#6	STR	24'-11"	75	B53	2	#8	STR	26'-3"	141						
*B10	2	#6	STR	25'-1"	75	B54	2	#8	STR	26'-4"	141						
*B11	2	#6	STR	25'-2"	76	B55	2	#8	STR	26'-5"	142						
*B12	2	#6	STR	25'-3"	76	B56	2	#8	STR	26'-6"	142						
*B13	2	#6	STR	25'-4"	76	B57	2	#8	STR	26'-7"	143						
*B14	2	#6	STR	25'-5"	76	B58	2	#8	STR	26'-9"	143						
*B15	2	#6	STR	25'-7"	77	B59	2	#8	STR	26'-10"	144						
*B16	2	#6	STR	25'-8"	77	B60	2	#8	STR	26'-11"	144						
*B17	2	#6	STR	25'-9"	77	B61	2	#8	STR	27'-0"	145						
*B18	2	#6	STR	25'-10"	78	B62	2	#8	STR	27'-2"	146						
*B19	2	#6	STR	26'-0"	78	B63	2	#8	STR	27'-3"	146						
*B20	2	#6	STR	26'-1"	78	B64	2	#8	STR	27'-4"	146						
*B21	2	#6	STR	26'-2"	79	B65	2	#8	STR	27'-5"	146						
*B22	2	#6	STR	26'-3"	79	B66	2	#8	STR	27'-6"	147						
*B23	2	#6	STR	26'-4"	79	B67	2	#8	STR	27'-7"	147						
*B24	2	#6	STR	26'-6"	80	B68	2	#8	STR	27'-8"	148						
*B25	2	#6	STR	26'-7"	80	B69	2	#8	STR	27'-10"	149						
*B26	2	#6	STR	26'-8"	80	B70	2	#8	STR	27'-11"	149						
*B27	2	#6	STR	26'-9"	80	B71	2	#8	STR	28'-0"	150						

REINFORCING STEEL 6025 LBS.
 *EPOXY COATED REINFORCING STEEL 5088 LBS.
 CLASS AA CONCRETE BREAKDOWN
 POUR 1 SLAB & CURBS 34.2 C. Y.
 POUR 2 RAIL 2.1 C. Y.
 CLASS AA CONCRETE 36.3 C. Y.

BAR TYPES



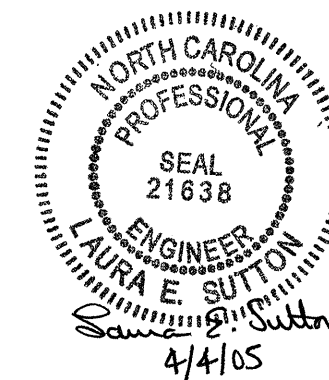
ALL BAR DIMENSIONS ARE OUT TO OUT

BAR	SIZE	LENGTH
A10	#4	1'-9"

PROJECT NO. B-3467
 HALIFAX COUNTY
 STATION: 20+75.00 -L-

SHEET 2 OF 4

STATE OF NORTH CAROLINA
 DEPARTMENT OF TRANSPORTATION
 RALEIGH
 STANDARD
 BRIDGE APPROACH SLAB
 FOR FLEXIBLE PAVEMENT
 WITH BARRIER RAIL



REVISIONS				SHEET NO.	
NO.	BY:	DATE:	NO.	BY:	DATE:
1			3		
2			4		

STR. #1 STD. NO. BAS5