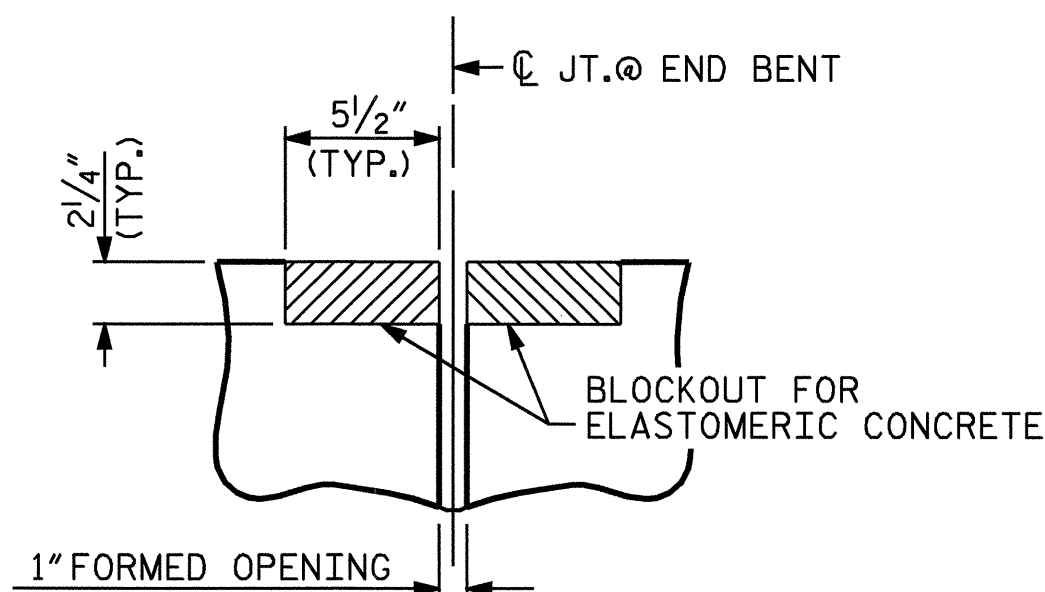


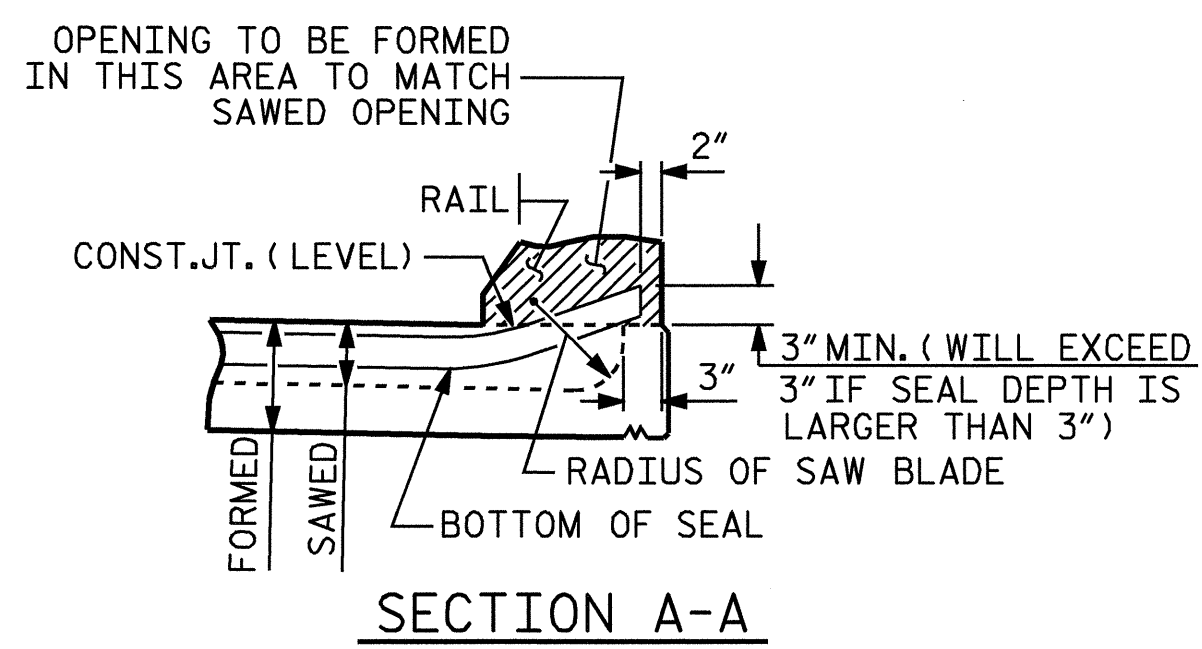
SECTION C-C
EVAZOTE JOINT SEAL
(FOR EVAZOTE JOINT SEAL, SEE SPECIAL PROVISIONS)



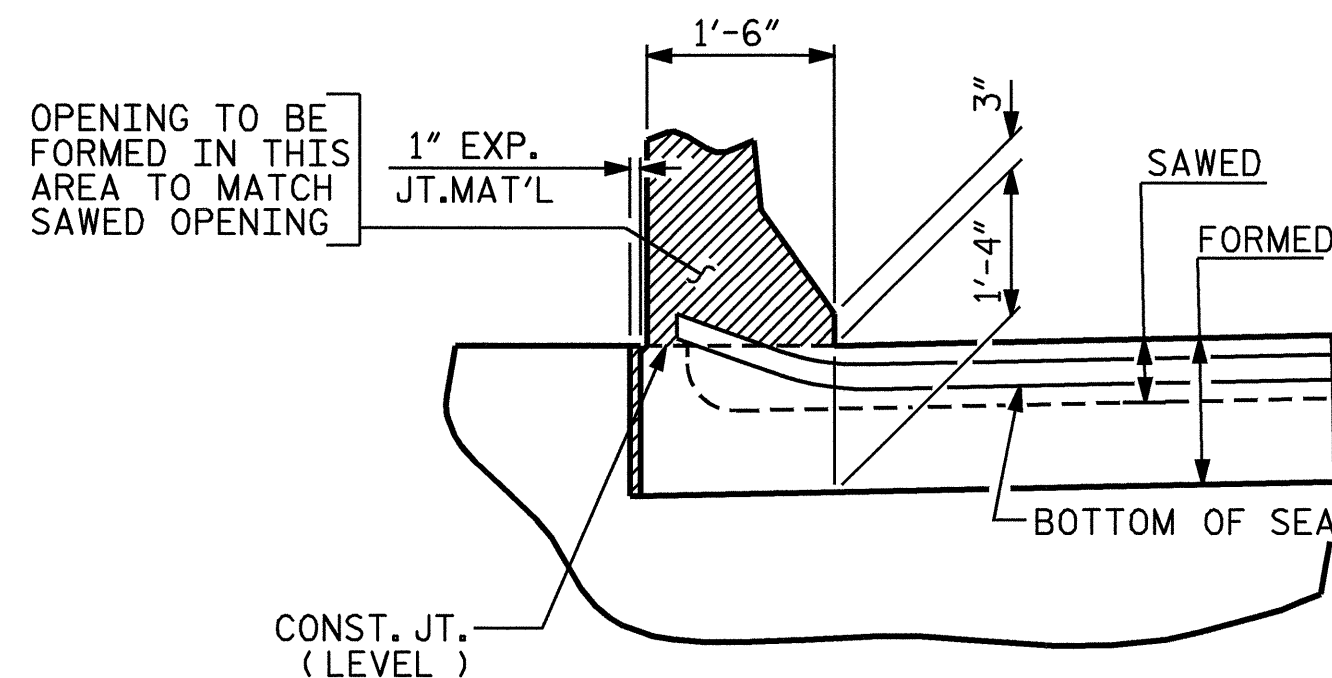
SECTION C-C
EVAZOTE JOINT SEAL
(PRE-SAWED ELASTOMERIC CONCRETE DIMENSIONS)

BILL OF MATERIAL	
END BENT NO.	ELASTOMERIC CONCRETE * (CU. FT.)
1	5.3
2	5.3
TOTAL	10.6

* BASED ON THE MINIMUM BLOCKOUT SHOWN.



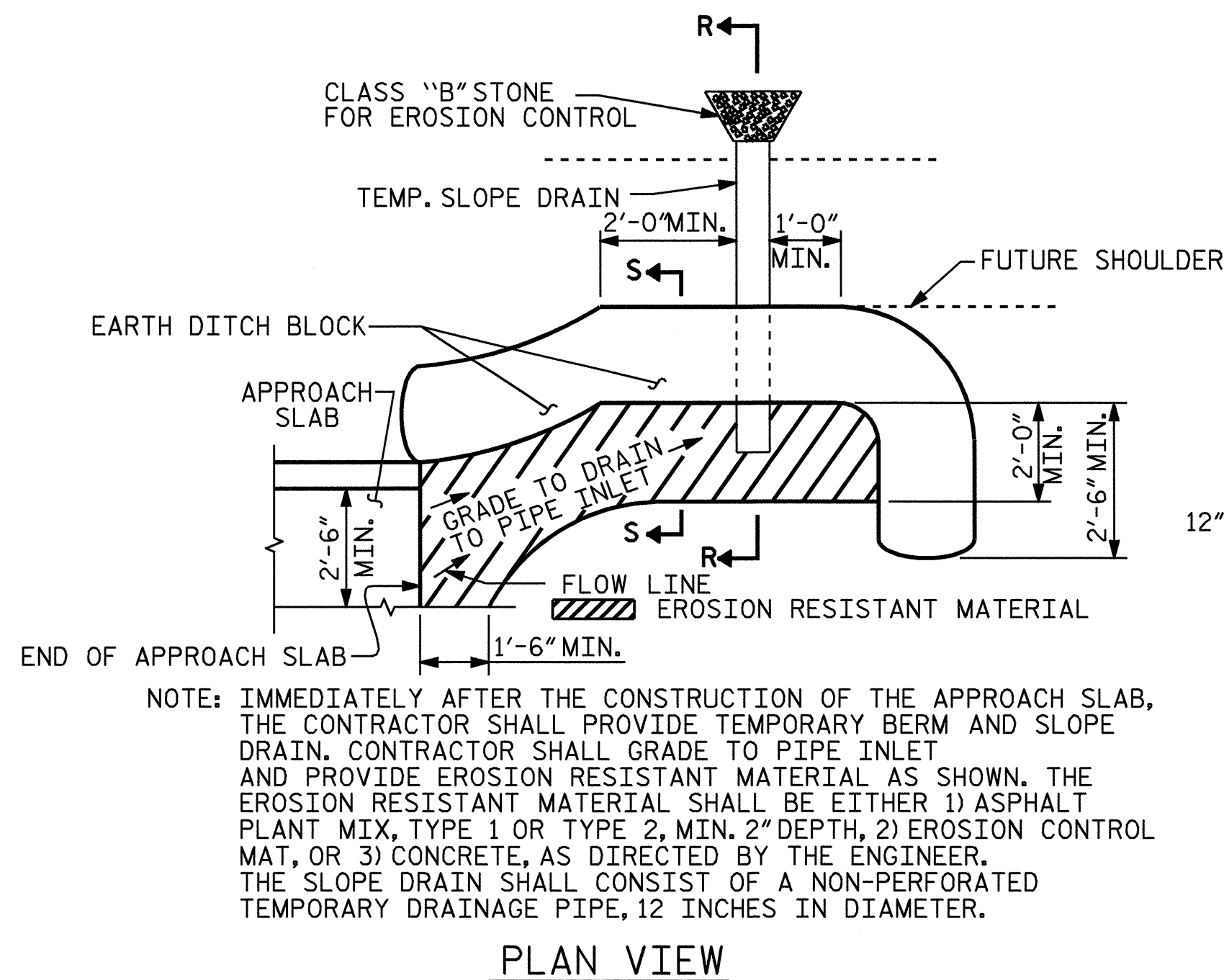
SECTION A-A



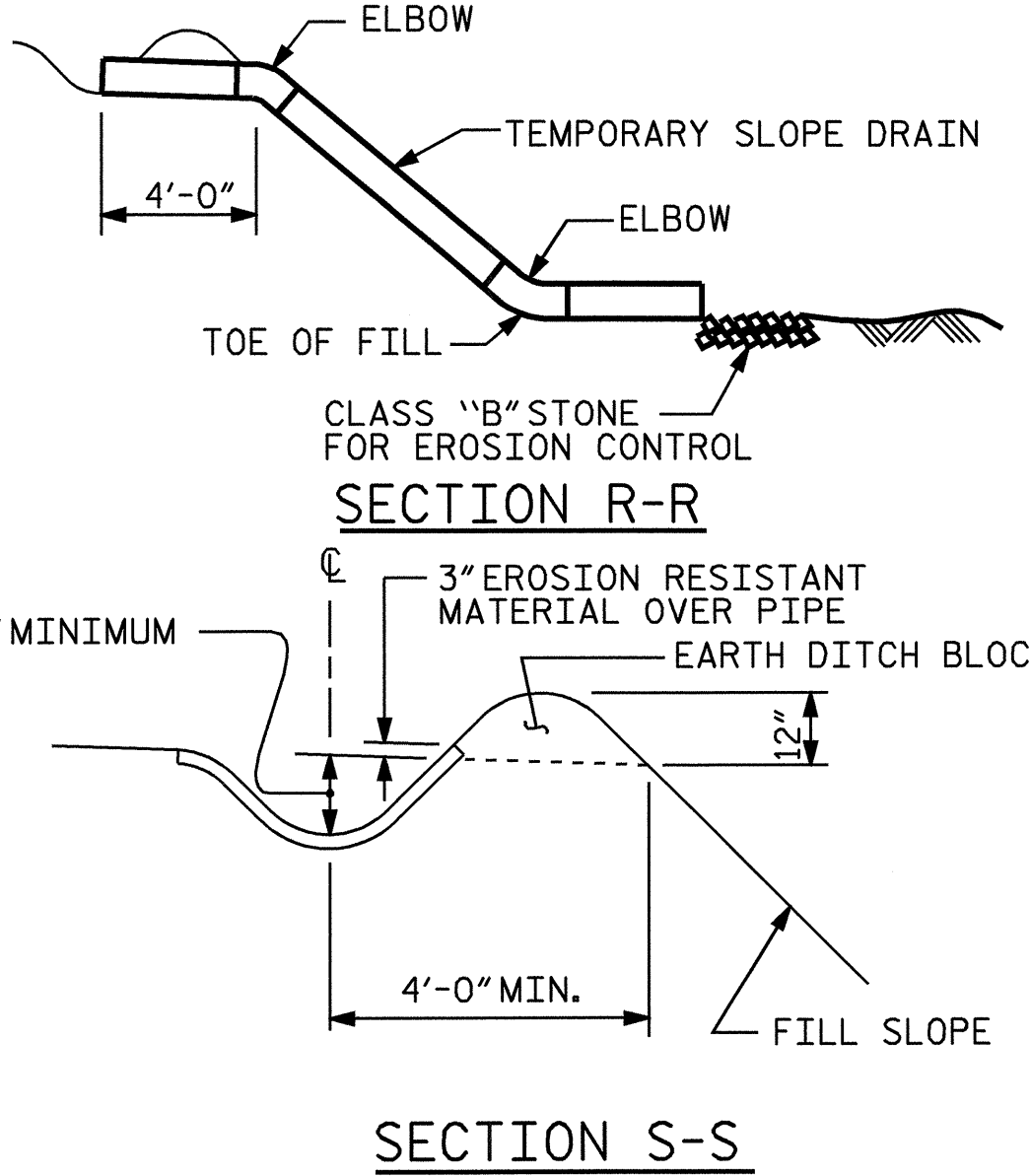
SECTION B-B

JOINT SEAL DETAILS @ END BENT

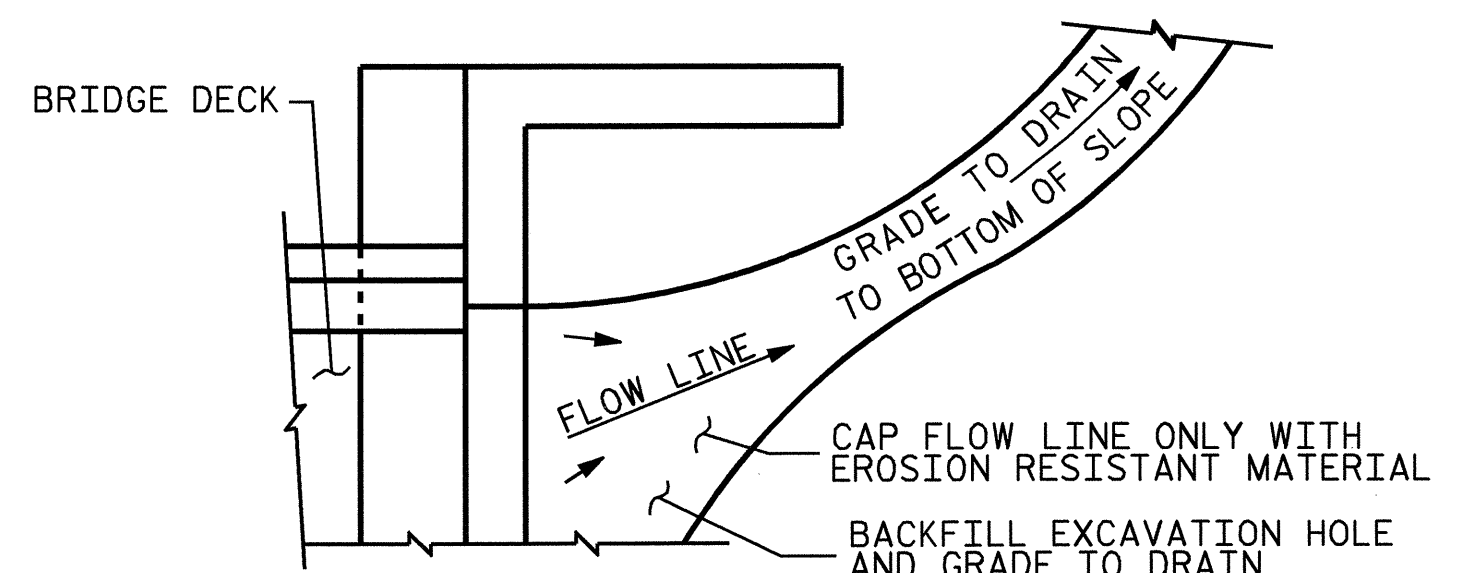
(FOR BARRIER RAIL)



NOTE: IMMEDIATELY AFTER THE CONSTRUCTION OF THE APPROACH SLAB, THE CONTRACTOR SHALL PROVIDE TEMPORARY BERM AND SLOPE DRAIN. CONTRACTOR SHALL GRADE TO PIPE INLET AND PROVIDE EROSION RESISTANT MATERIAL AS SHOWN. THE EROSION RESISTANT MATERIAL SHALL BE EITHER 1) ASPHALT PLANT MIX, TYPE 1 OR TYPE 2, MIN. 2" DEPTH, 2) EROSION CONTROL MAT, OR 3) CONCRETE, AS DIRECTED BY THE ENGINEER. THE SLOPE DRAIN SHALL CONSIST OF A NON-PERFORATED TEMPORARY DRAINAGE PIPE, 12 INCHES IN DIAMETER.



TEMPORARY BERM AND SLOPE DRAIN DETAILS



NOTE: IF THE APPROACH SLAB IS NOT CONSTRUCTED IMMEDIATELY AFTER THE BACKFILLING OF THE END BENT EXCAVATION, GRADE TO DRAIN TO THE BOTTOM OF THE SLOPE AND PROVIDE EROSION RESISTANT MATERIAL, SUCH AS FIBERGLASS ROVING OR AS DIRECTED BY THE ENGINEER TO PREVENT SOIL EROSION AND TO PROTECT THE AREA ADJACENT TO THE STRUCTURE. THE CONTRACTOR WILL BE REQUIRED TO REMOVE THESE MATERIALS PRIOR TO CONSTRUCTION OF THE APPROACH SLAB.

TEMPORARY DRAINAGE DETAIL

PROJECT NO. B-3467
HALIFAX COUNTY
STATION: 20+75.00 -L-

SHEET 4 OF 4

STATE OF NORTH CAROLINA
DEPARTMENT OF TRANSPORTATION
RALEIGH
STANDARD
BRIDGE APPROACH
SLAB DETAILS

REVISIONS						1988	
NO.	BY:	DATE:	NO.	BY:	DATE:	SHEET NO.	
1			3			S-32	
2			4			TOTAL SHEETS 60	



ASSEMBLED BY: A.S. CALLAWAY DATE: 8/4/04
CHECKED BY: N.Q. TRAN DATE: 9/28/04
DRAWN BY: FCJ 11/88
CHECKED BY: ARB 11/88
REV. 8/16/99 MAB/LES
REV. 10/17/00 RWW/LES
REV. 5/7/03 RWW/JTE