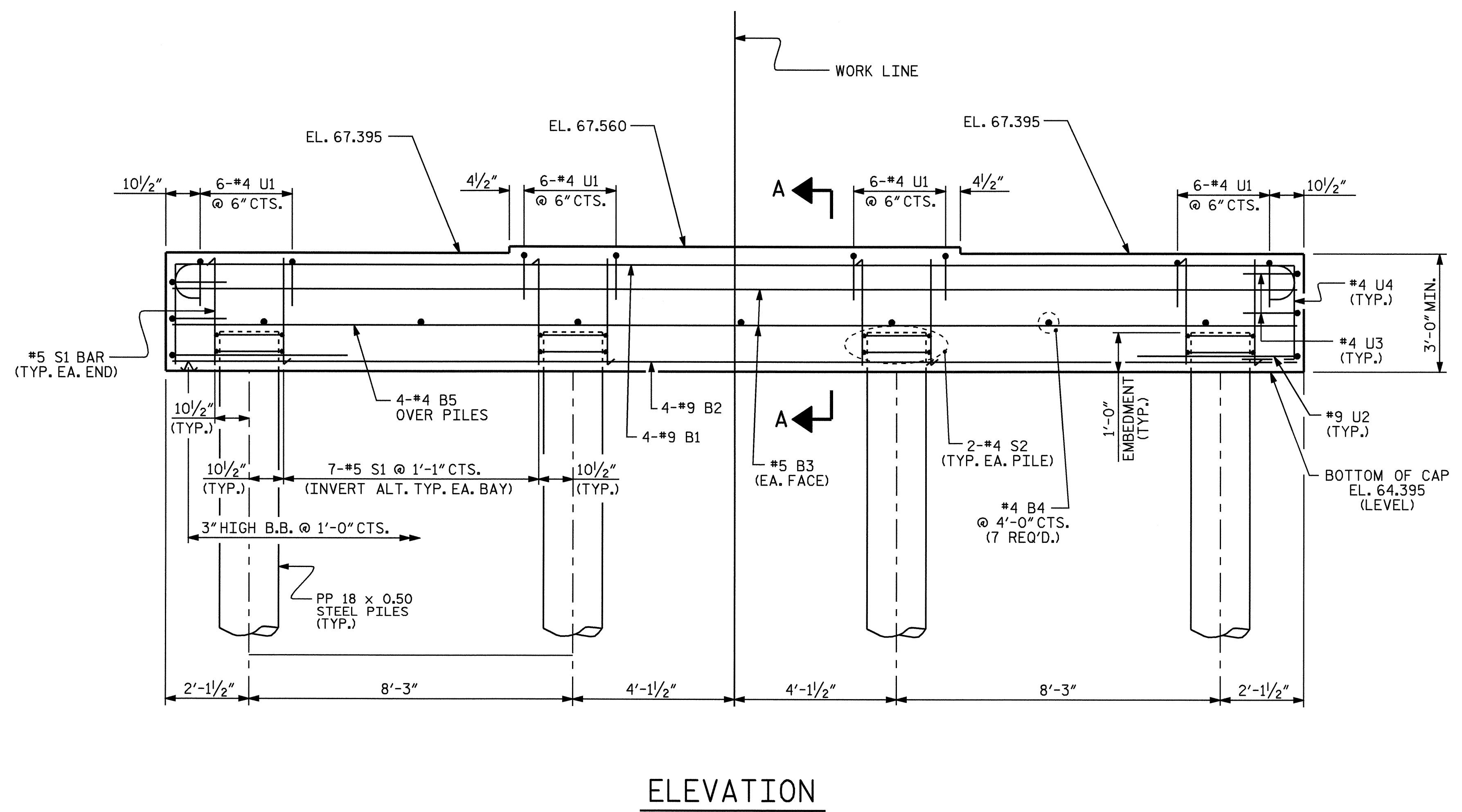
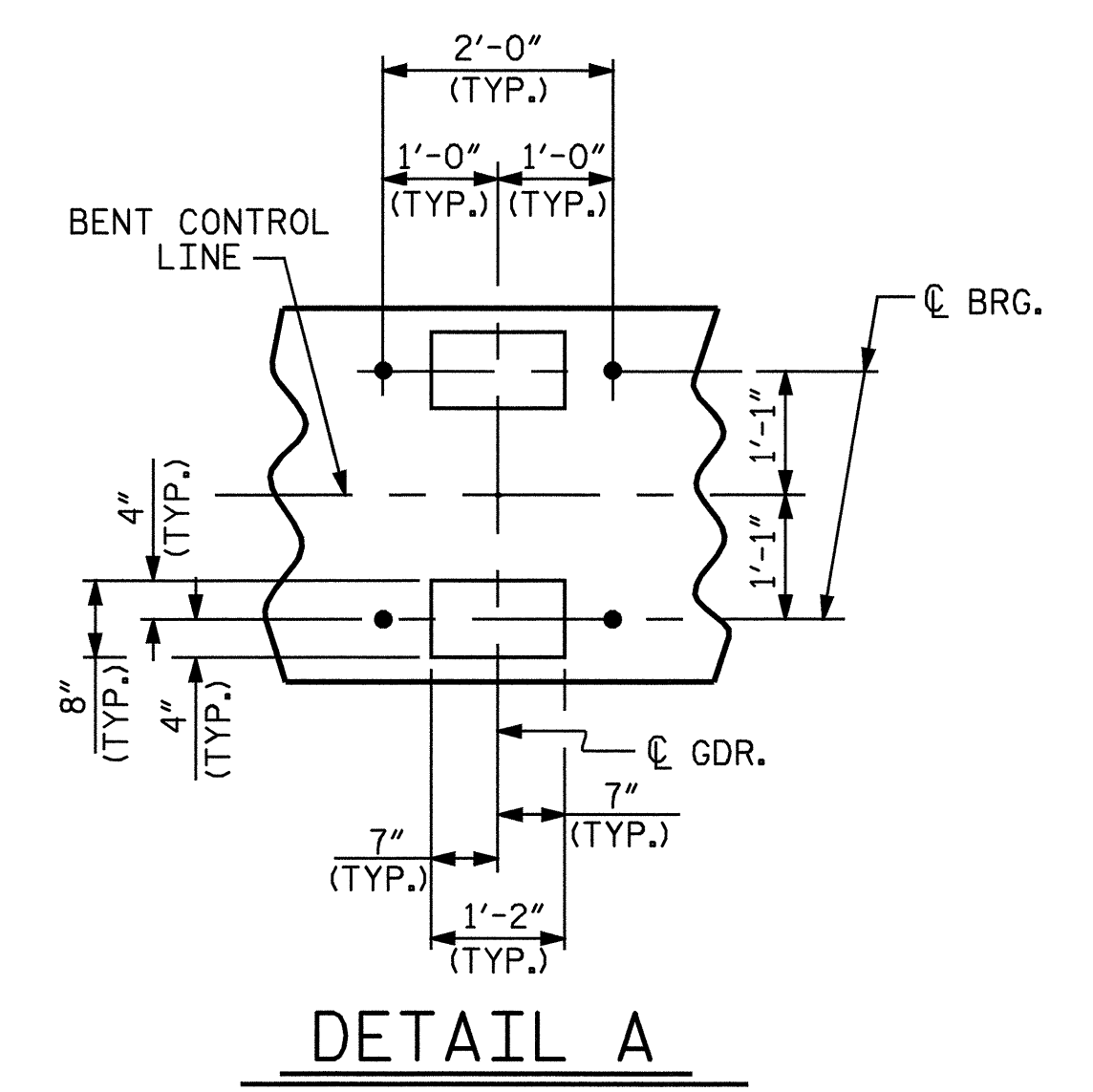


**NOTES**

STIRRUPS IN CAP MAY BE SHIFTED AS NECESSARY TO CLEAR ANCHOR BOLTS.

FOR REINFORCING STEEL IN PIPE PILES, SEE "18" STEEL PIPE PILE" SHEET.



PROJECT NO. B-3467  
HALIFAX COUNTY  
 STATION: 31+50.00 -L-  
 SHEET 1 OF 2

STATE OF NORTH CAROLINA DEPARTMENT OF TRANSPORTATION RALEIGH					
SUBSTRUCTURE BENT 1					
REVISIONS					SHEET NO.
NO.	BY:	DATE:	NO.	BY:	DATE:
1			3		
2			4		
					TOTAL SHEETS
					60



DRAWN BY: J.L. WALTON DATE: 10/20/03  
 CHECKED BY: J.J. VONES DATE: 3/24/04