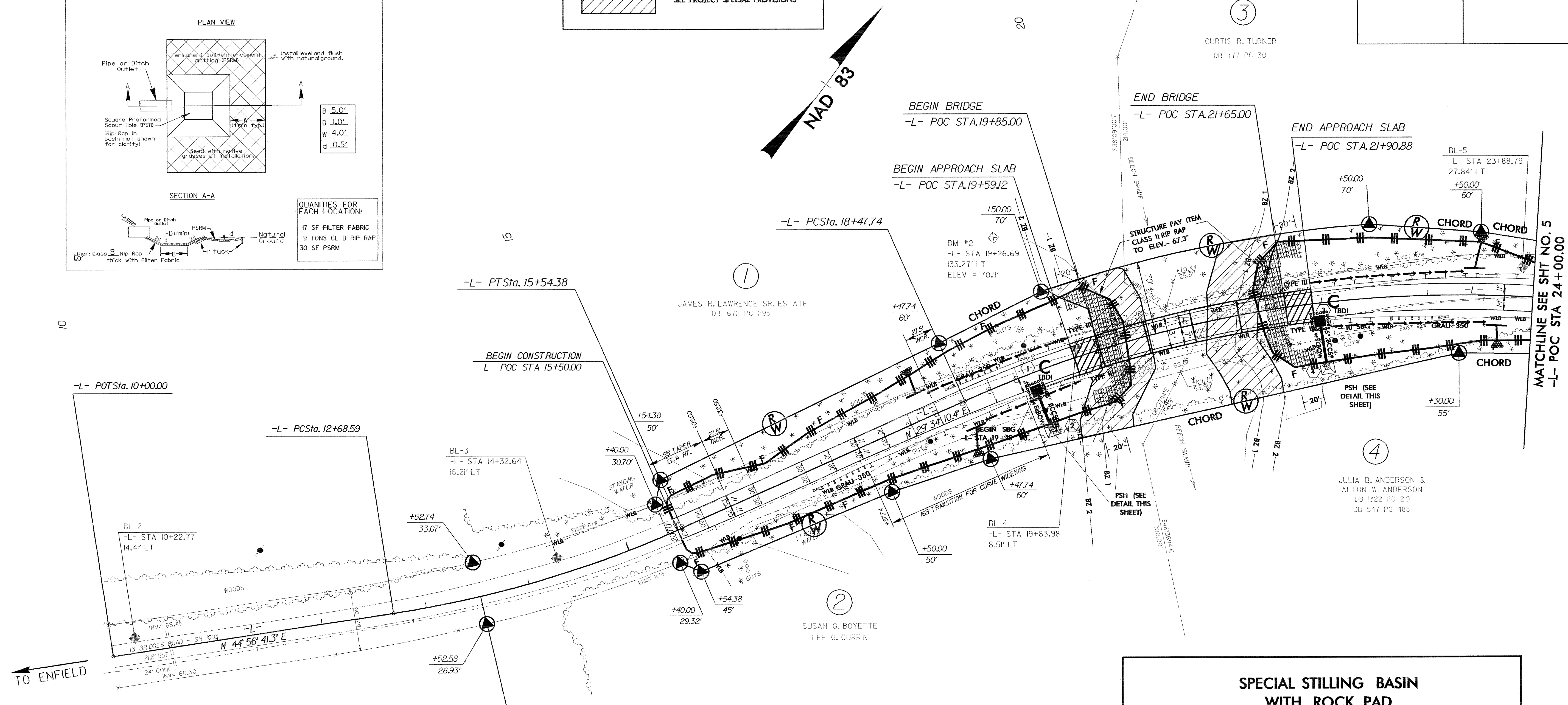
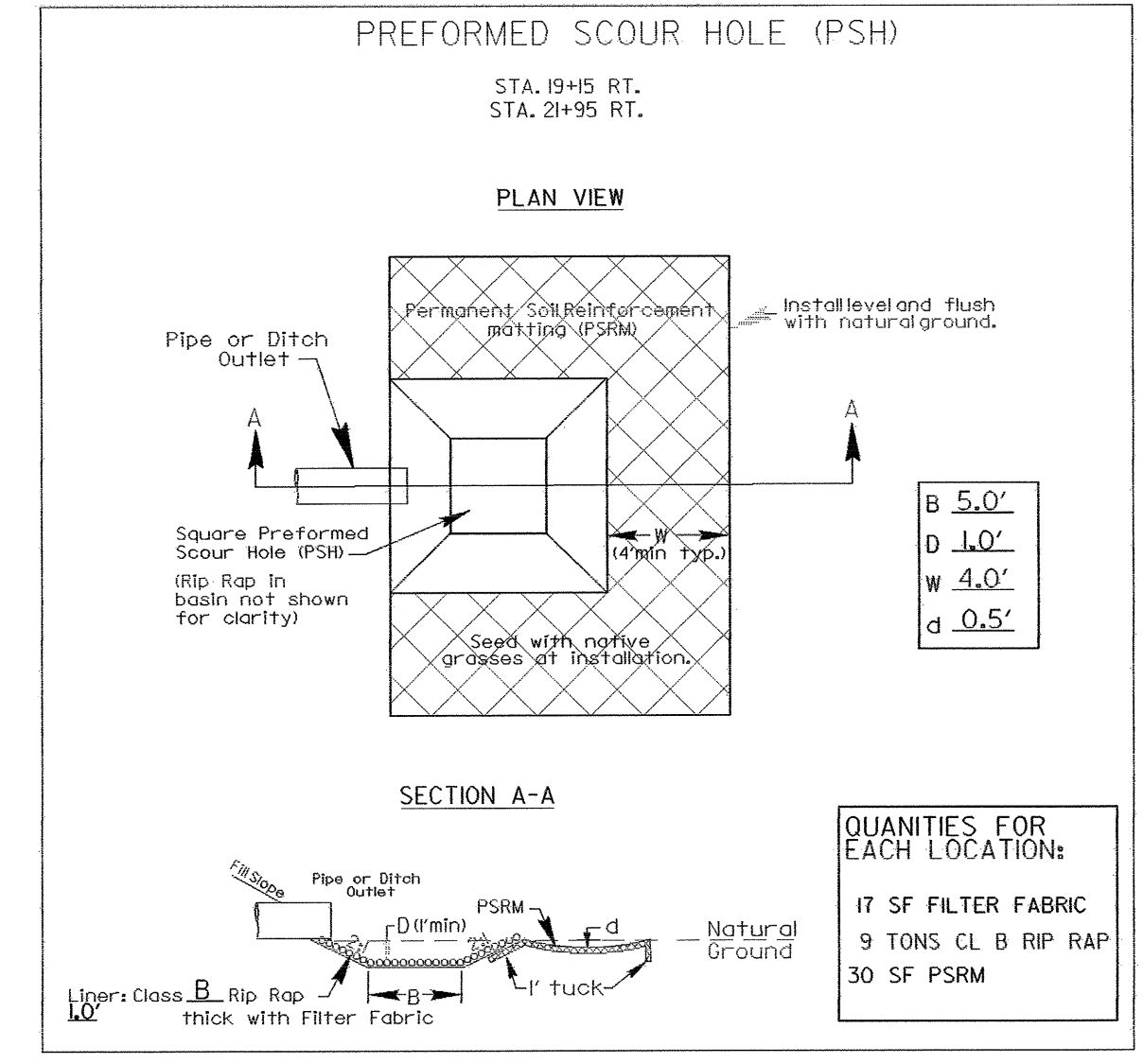


| | |
|---------------------------------|---------------------------|
| PROJECT REFERENCE NO. B-3467 | SHEET NO. EC-3/CONST.4 |
| R/W SHEET NO. | |
| ROADWAY DESIGN ENGINEER | HYDRAULICS ENGINEER |

NOTE: UTILIZE SPECIAL STILLING BASIN AS STILLING BASIN WHERE APPLICABLE

NOTE: PERIMETER EROSION CONTROL MEASURES SHALL BE INSTALLED DURING CLEARING AND GRUBBING PHASE.

NOTE: TEMPORARY SILT FENCE SHALL BE INSTALLED A MINIMUM OF 3 FEET FROM TOE OF FILL IN WETLAND AREAS



DATUM DESCRIPTION

THE LOCALIZED COORDINATE SYSTEM DEVELOPED FOR THIS PROJECT IS BASED ON THE STATE PLANE COORDINATES ESTABLISHED BY NCDOT FOR MONUMENT "B4134-1" WITH NAD 1983/95 STATE PLANE GRID COORDINATES OF NORTHING: 874849.5069(11) EASTING: 244655.15209(11) THE AVERAGE COMBINED GRID FACTOR USED ON THIS PROJECT (GROUND TO GRID) IS: 0.99999427

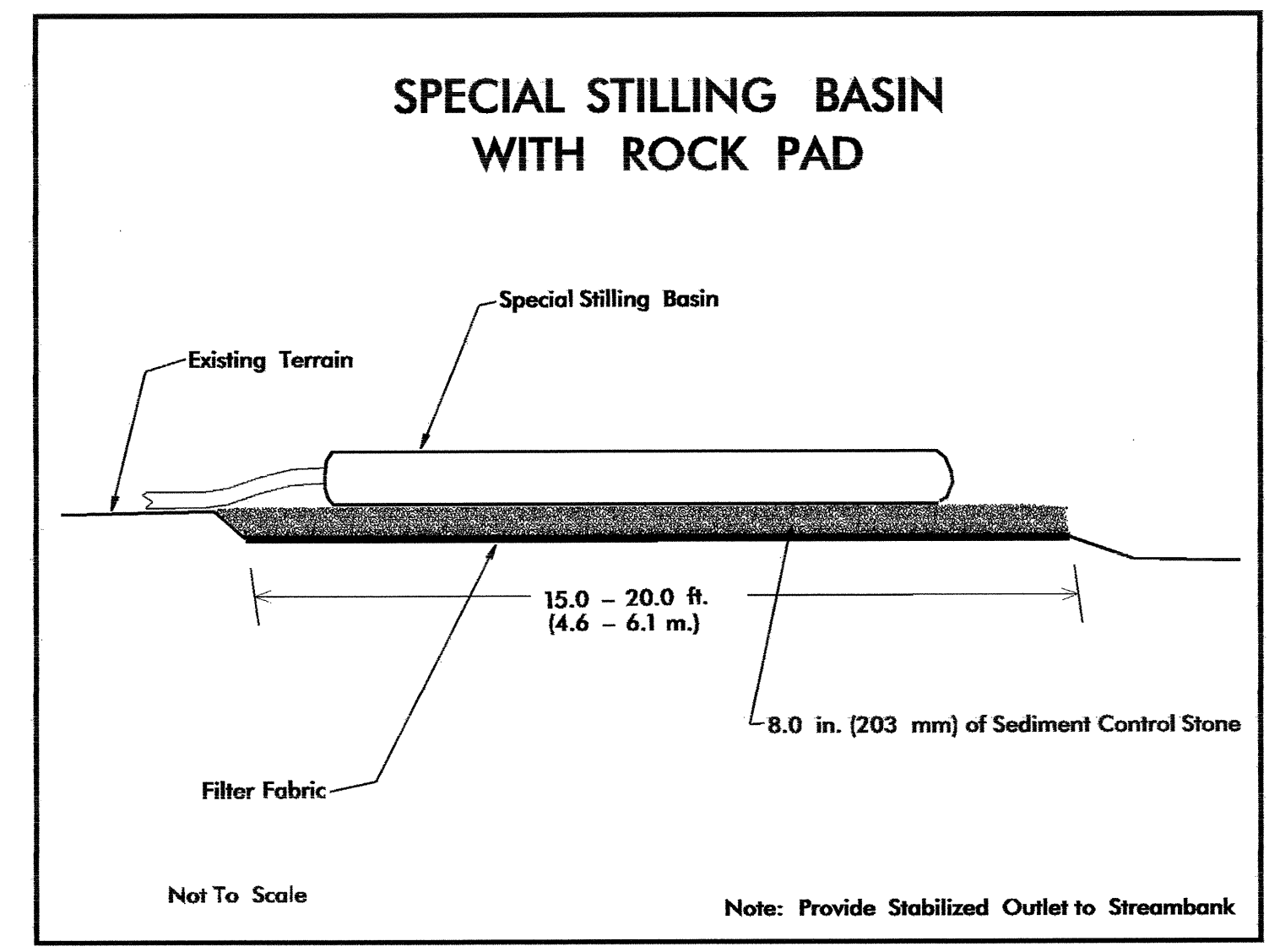
THE N.C. LAMBERT GRID BEARING AND LOCALIZED HORIZONTAL GROUND DISTANCE FROM "B4134-1" TO "L" STATION 10+00.00 IS S 87° 46' 39.28" W 222565.161 FT.

ALL LINEAR DIMENSIONS ARE LOCALIZED HORIZONTAL DISTANCES VERTICAL DATUM USED IS NAVD 88

BEGIN TIP PROJECT B-3467
-L- STA. 13 + 52.58

NOTE: USE FABRIC FOR SOIL STABILIZATION IN LIEU OF UNDERCUT AT -L- STA 16+25 TO 20+00 (RT), -L- STA 17+25 TO 20+00 (LT) AND -L- STA 21+60 TO 23+75 (LT/RT) FROM EXISTING TOE OF SLOPE TO PROPOSED TOE OF SLOPE. SEE SHEET 3-B FOR SUMMARY TOTALS. QUANTITY = 2250.00 SY

ALL EXISTING PAVEMENT WITHIN CONSTRUCTION LIMITS SHALL BE REMOVED.



MATCHLINE SEE SHT NO. 5
-L- POC STA 24+00.00