

SURVEY CONTROL SHEET B3839

BL	POINT	DESC.	NORTH	EAST	ELEVATION	L STATION	OFFSET
1	B3839-1		858245.0160	1663411.1520	909.00	OUTSIDE PROJECT LIMITS	
3	BL-3		858686.7033	1663557.5885	869.83	14+12.38	16.18 LT
4	BL-4		859189.3697	1663719.0935	833.82	19+40.15	18.20 LT
2	B3839-2		859623.5940	1663900.6300	848.13	24+09.19	15.53 LT
5	BL-5		860066.0031	1664139.3987	883.73	OUTSIDE PROJECT LIMITS	

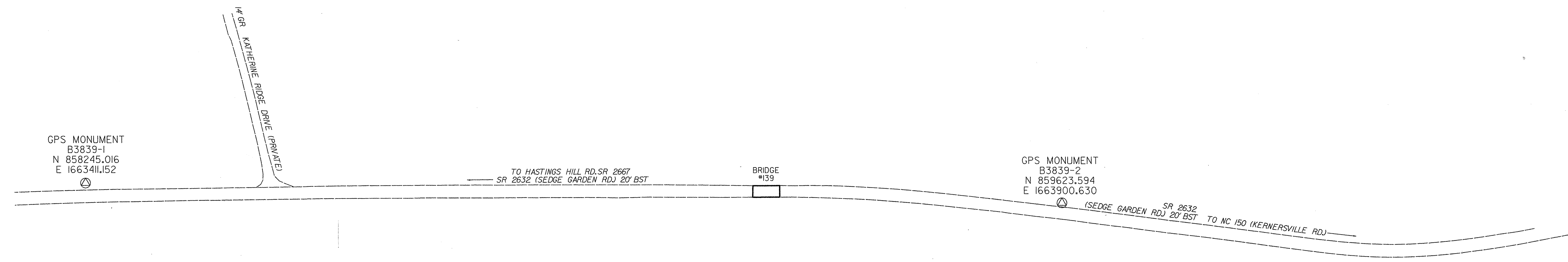
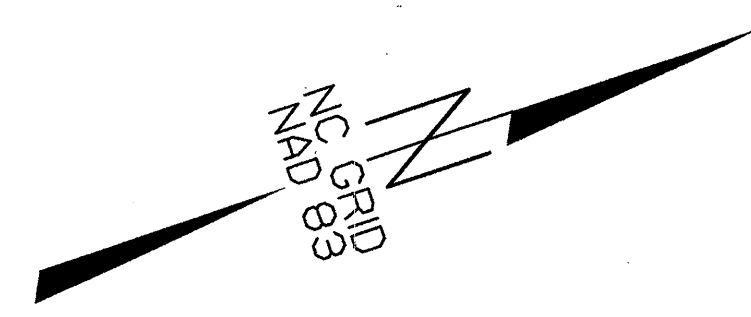
```

*****
BM1      ELEVATION = 909.85
RR SPIKE SET IN BASE OF 15"
DBL PINE
N 858312      E 1663422
L STATION 10+14 30 LEFT

*****
BM2      ELEVATION = 839.74
RR SPIKE SET IN BASE OF 18"
WHITE PINE
N 859513      E 1663832
L STATION 22+80 31 LEFT

*****
BM3      ELEVATION = 886.91
N 860060      E 1664141
L STATION 27+18
N 30' 26' 52.0" E DIST 189.17
*****

```



DATUM DESCRIPTION

THE LOCALIZED COORDINATE SYSTEM DEVELOPED FOR THIS PROJECT IS BASED ON THE STATE PLANE COORDINATES ESTABLISHED BY NCDOT FOR MONUMENT "B3839-1"

WITH NAD 83 STATE PLANE GRID COORDINATES OF
 NORTHING: 858245.016(ft) EASTING: 1663411.152(ft)
 THE AVERAGE COMBINED GRID FACTOR USED ON THIS PROJECT
 (GROUND TO GRID) IS: 0.99994447

THE N.C. LAMBERT GRID BEARING AND
 LOCALIZED HORIZONTAL GROUND DISTANCE FROM
 "B3839-1" TO -L- STATION 12+50.00 IS
 N 21° 34' 31.9" E 303.53 FT

ALL LINEAR DIMENSIONS ARE LOCALIZED HORIZONTAL DISTANCES
 VERTICAL DATUM USED IS NGVD 29

NOTES:

- THE CONTROL DATA FOR THIS PROJECT CAN BE FOUND ELECTRONICALLY BY SELECTING PROJECT CONTROL DATA AT:
[HTTP://WWW.DOH.DOT.STATE.NC.US/PRECONSTRUCT/HIGHWAY/LOCATION/PROJECT B3839_LS_CONTROL_031009.TXT](http://www.doh.dot.state.nc.us/preconstruct/highway/location/project/B3839_LS_CONTROL_031009.TXT)
- SITE CALIBRATION INFORMATION HAS NOT BEEN PROVIDED FOR THIS PROJECT. IF FURTHER INFORMATION IS NEEDED, PLEASE CONTACT THE LOCATION AND SURVEYS UNIT.
- Ⓢ INDICATES GEODETIC CONTROL MONUMENTS USED OR SET FOR HORIZONTAL PROJECT CONTROL BY THE NCDOT LOCATION AND SURVEYS UNIT.
- PROJECT CONTROL ESTABLISHED USING GLOBAL POSITIONING SYSTEM.

NOTE: DRAWING NOT TO SCALE

6/2/99

\\roadway\proj\B3839_1s_1c.dgn 01/31/2005 09:15:03 AM