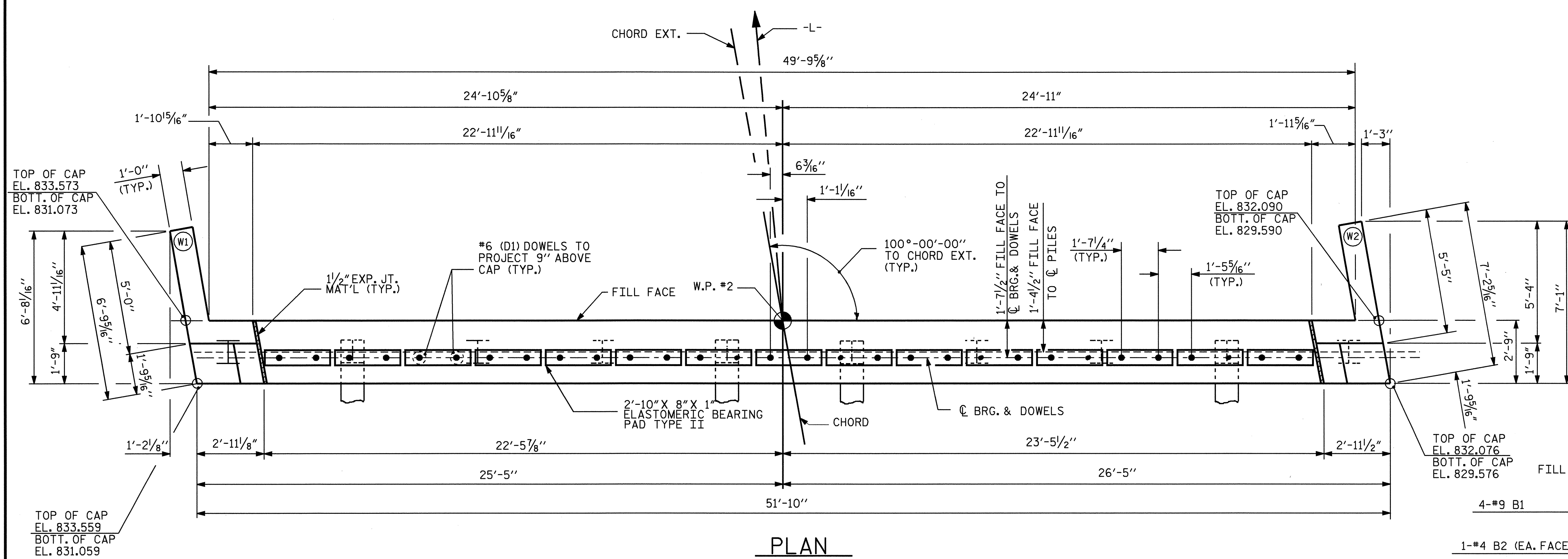
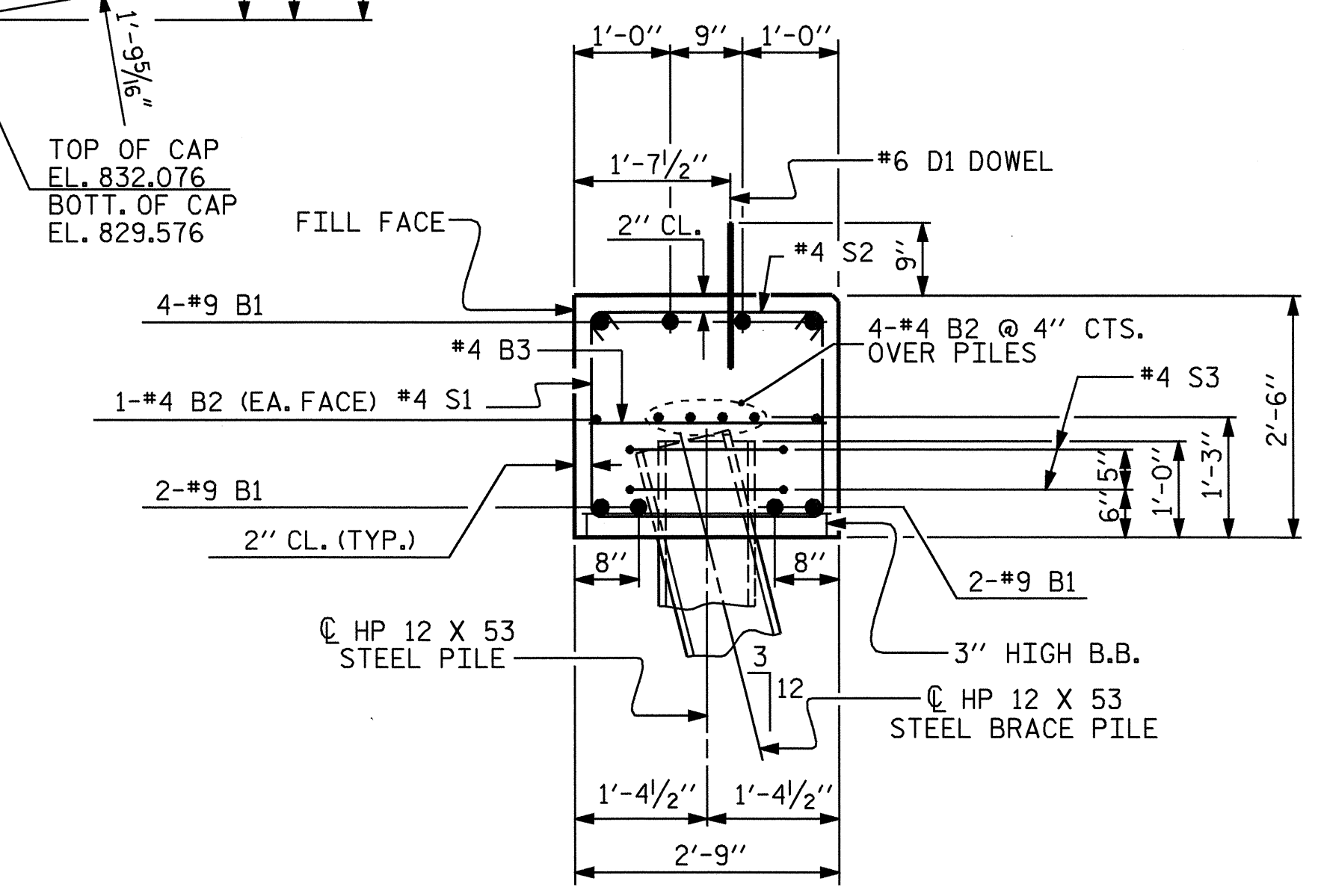


NOTES

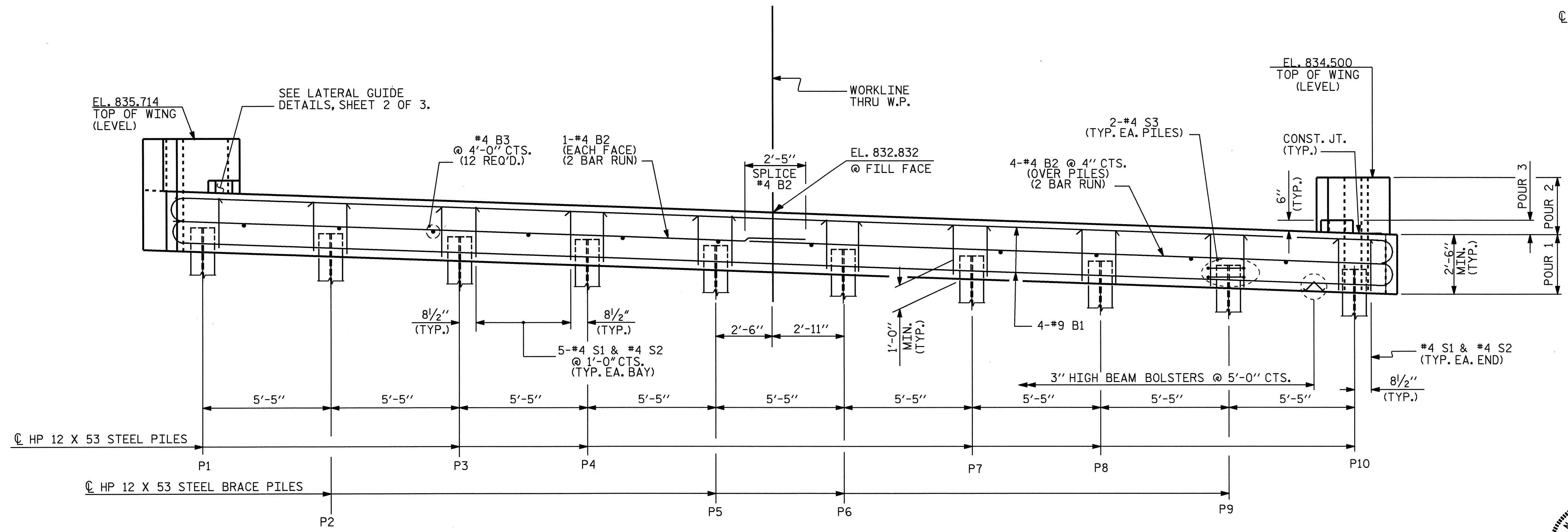
STIRRUPS IN CAP MAY BE SHIFTED AS NECESSARY TO CLEAR #6 DOWELS.
 THE LATERAL GUIDE AT EACH END OF THE CAP IS NOT TO BE POURED UNTIL AFTER THE CORED SLAB UNITS ARE IN PLACE.
 FOR PILE SPLICE DETAILS, SEE SHEET 3 OF 3.
 THE CONTRACTOR SHALL PROVIDE FOR INSTALLATION OF THE 4" DIAMETER DRAIN PIPE THROUGH THE WING WALL AS REQUIRED FOR REINFORCED BRIDGE APPROACH FILLS, SEE THE ROADWAY PLANS. REINFORCING STEEL IN THE WING WALL MAY BE SHIFTED AS NECESSARY TO CLEAR THE DRAIN PIPE.



PLAN



SECTION THRU CAP



ELEVATION

TOP OF PILE ELEVATION CHART

| P1 | P2 | P3 | P4 | P5 | P6 | P7 | P8 | P9 | P10 |
|---------|---------|---------|---------|---------|---------|---------|---------|---------|---------|
| 832.037 | 831.882 | 831.727 | 831.573 | 831.418 | 831.263 | 831.108 | 830.953 | 830.799 | 830.644 |

PROJECT NO. B-3839
 FORSYTH COUNTY
 STATION: 19+64.00 -L-

SHEET 1 OF 3

STATE OF NORTH CAROLINA
 DEPARTMENT OF TRANSPORTATION
 RALEIGH

**SUBSTRUCTURE
 END BENT No. 2**

| REVISIONS | | | | | | SHEET NO. | |
|-----------|-----|-------|-----|-----|-------|-----------------|--|
| NO. | BY: | DATE: | NO. | BY: | DATE: | S-10 | |
| 1 | | | 3 | | | TOTAL SHEETS 16 | |
| 2 | | | 4 | | | | |



DRAWN BY: M. POOLE DATE: 04/2004
 CHECKED BY: L.L. MURPHY DATE: 05/2005

03-JUN-2005 08:14
 R:\STRUCT\B3839\m\poole\microstation\B3839.sd.E2.01.dgn
 mpoole