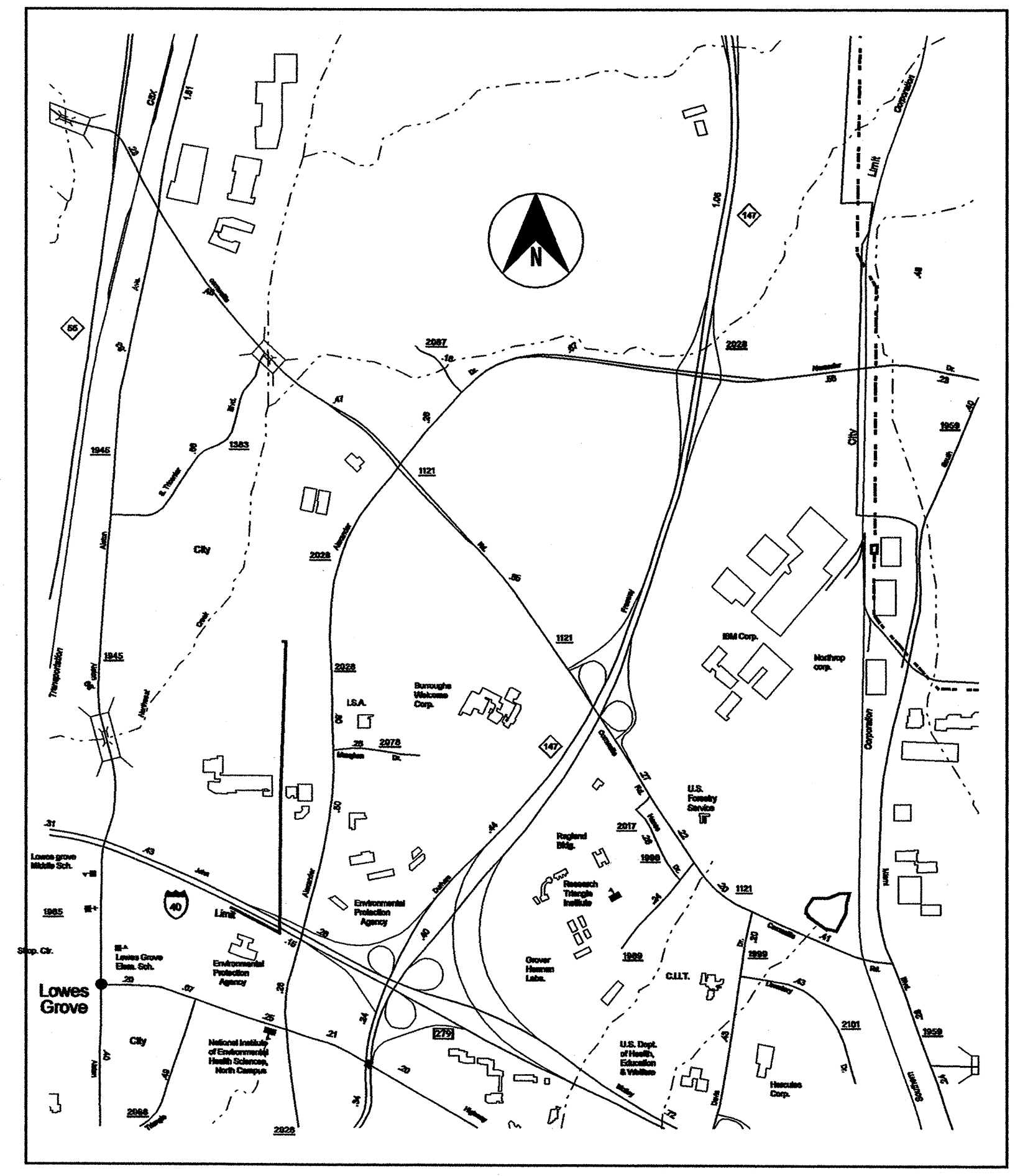
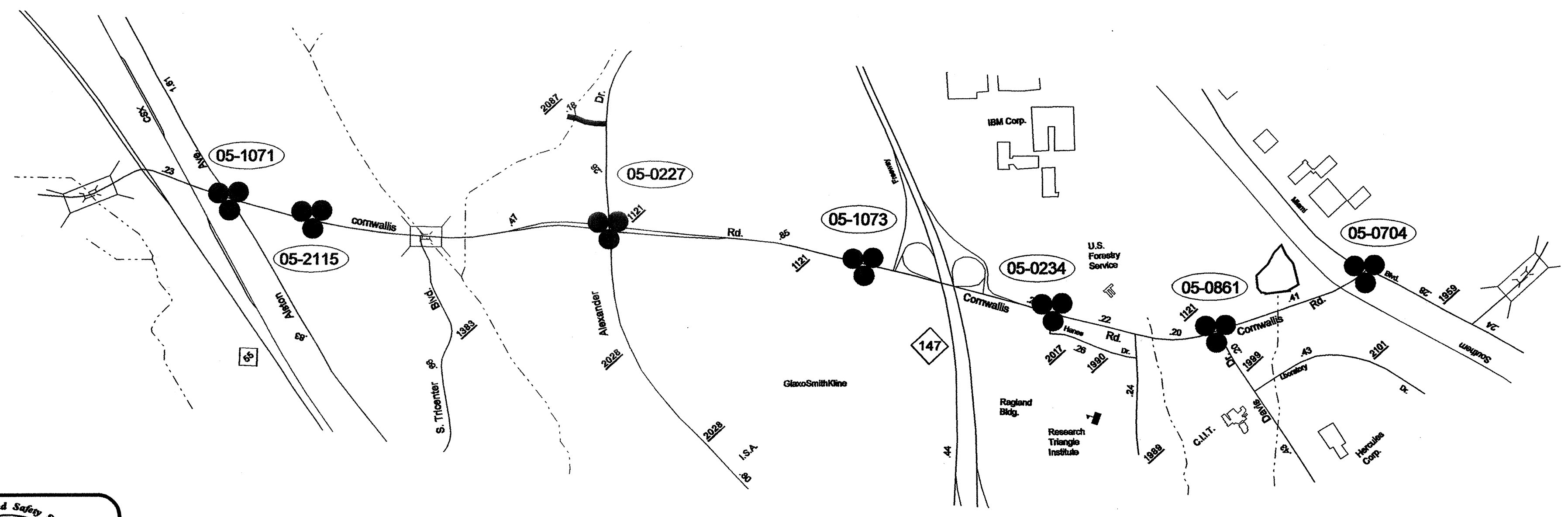
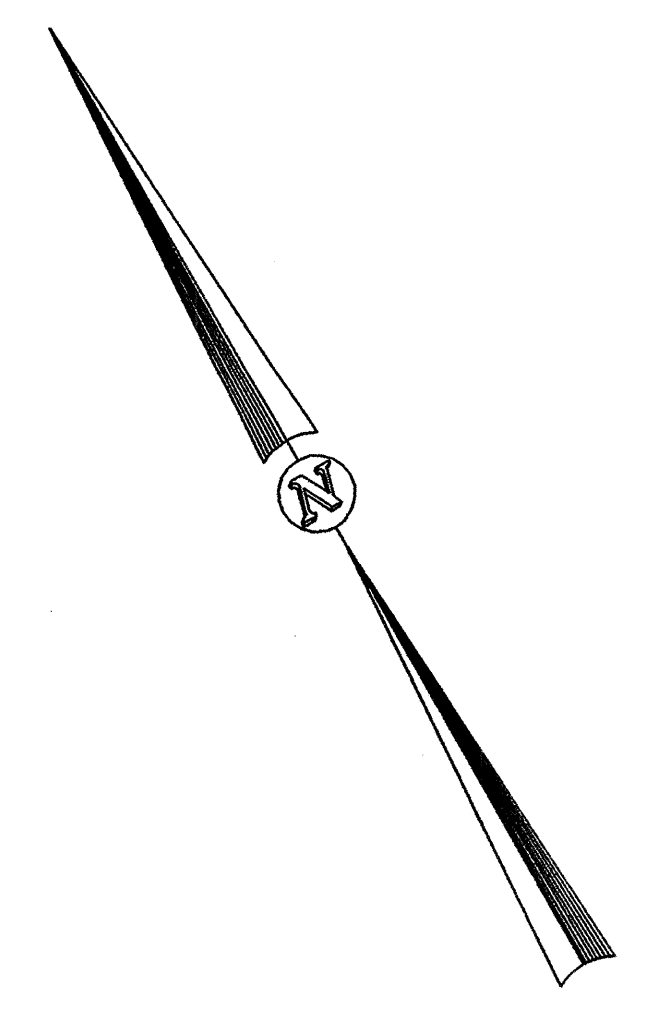


STATE	PROJECT NO.	SHEET NO.
N.C.	37652	1
F.A. PROJ. NO.		
PROJECT ID. NO.		

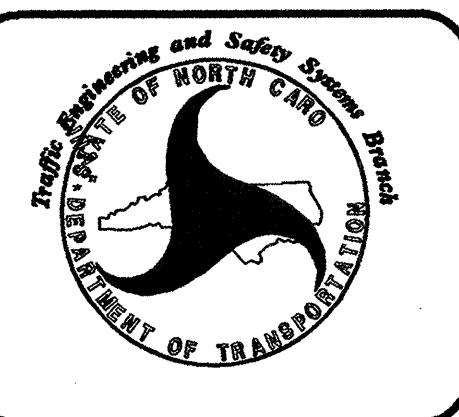
STATE OF NORTH CAROLINA
 DIVISION OF HIGHWAYS
DURHAM COUNTY

LOCATION: SR 1121 (Cornwallis Road) From SR 1945 (Alston Avenue) to SR 1959 (Miami Boulevard)

TYPE OF WORK: Traffic Signals and Roadway Widening



Vicinity Map



Refer to "Roadway Standard Drawings NCDOT" dated January 2002 and "Standard Specifications for Roads and Structures" dated January 2002.

PROJECT: 37652

INDEX OF PLANS		
SHEET NUMBER	SIGNAL INVENTORY NUMBER	LOCATION /DESCRIPTION
SIG. 1		<i>Title Sheet</i>
SIG. 2-3	05-1071	SR 1121 (Cornwallis Rd.) at SR 1945 (Alston Ave)
SIG. 4-5	05-2115	SR 1121 (Cornwallis Rd.) at SR 1954 (Northeast Creek Pkwy.)
SIG. 6-8	05-0227	SR 1121 (Cornwallis Rd.) at SR 2028 (Alexander Dr.)
SIG. 9-10	05-1073	SR 1121 (Cornwallis Rd.) at GlaxoSmithKline Entrance
SIG. 11-12	05-0234	SR 1121 (Cornwallis Rd.) at SR 2017 (West Institute Dr.) and IBM Entrance
SIG. 13-15	05-0861	SR 1121 (Cornwallis Rd.) at SR 1999 (Davis Dr.)
SIG. 16-17	05-0704	SR 1959 (Miami Blvd.) at SR 1121 (Cornwallis Rd.) and IBM Lab Entrance

LEGEND
 ##-#### SIGNAL INVENTORY NUMBER

NCDOT CONTACTS:
 TRAFFIC ENGINEERING AND SAFETY SYSTEMS BRANCH
 R. J. ZIEMBA, P.E. - S & G RAILROAD AND SPECIAL PROJECTS ENGINEER
 G. C. BROWN, P.E. - SIGNAL EQUIPMENT DESIGN ENGINEER