

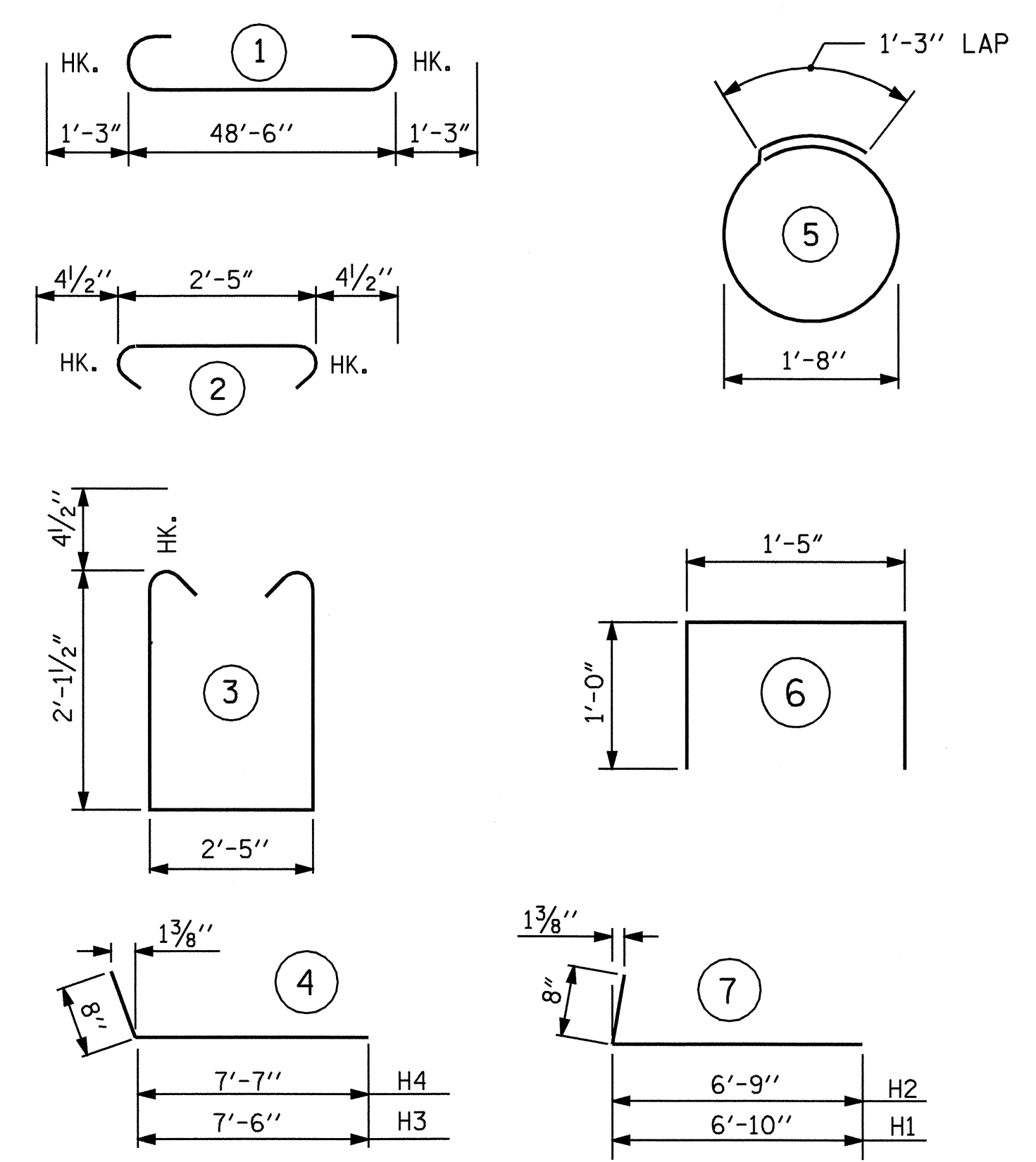
BAGGED STONE AND PIPE SHALL BE PLACED IMMEDIATELY AFTER COMPLETION OF END BENT EXCAVATION. PIPE MAY BE EITHER CONCRETE, CORRUGATED STEEL, CORRUGATED ALUMINUM ALLOY, OR CORRUGATED PLASTIC. PERFORATED PIPE WILL NOT BE ALLOWED.

BAGGED STONE SHALL REMAIN IN PLACE UNTIL THE ENGINEER DIRECTS THAT IT BE REMOVED. THE CONTRACTOR SHALL REMOVE AND DISPOSE OF SILT ACCUMULATIONS AT BAGGED STONE WHEN SO DIRECTED BY THE ENGINEER. BAGS SHALL BE REMOVED AND REPLACED WHENEVER THE ENGINEER DETERMINES THAT THEY HAVE DETERIORATED AND LOST THEIR EFFECTIVENESS.

NO SEPARATE PAYMENT WILL BE MADE FOR THIS WORK AND THE ENTIRE COST OF THIS WORK SHALL BE INCLUDED IN THE UNIT CONTRACT PRICE BID FOR THE SEVERAL PAY ITEMS.

TEMPORARY DRAINAGE AT END BENT

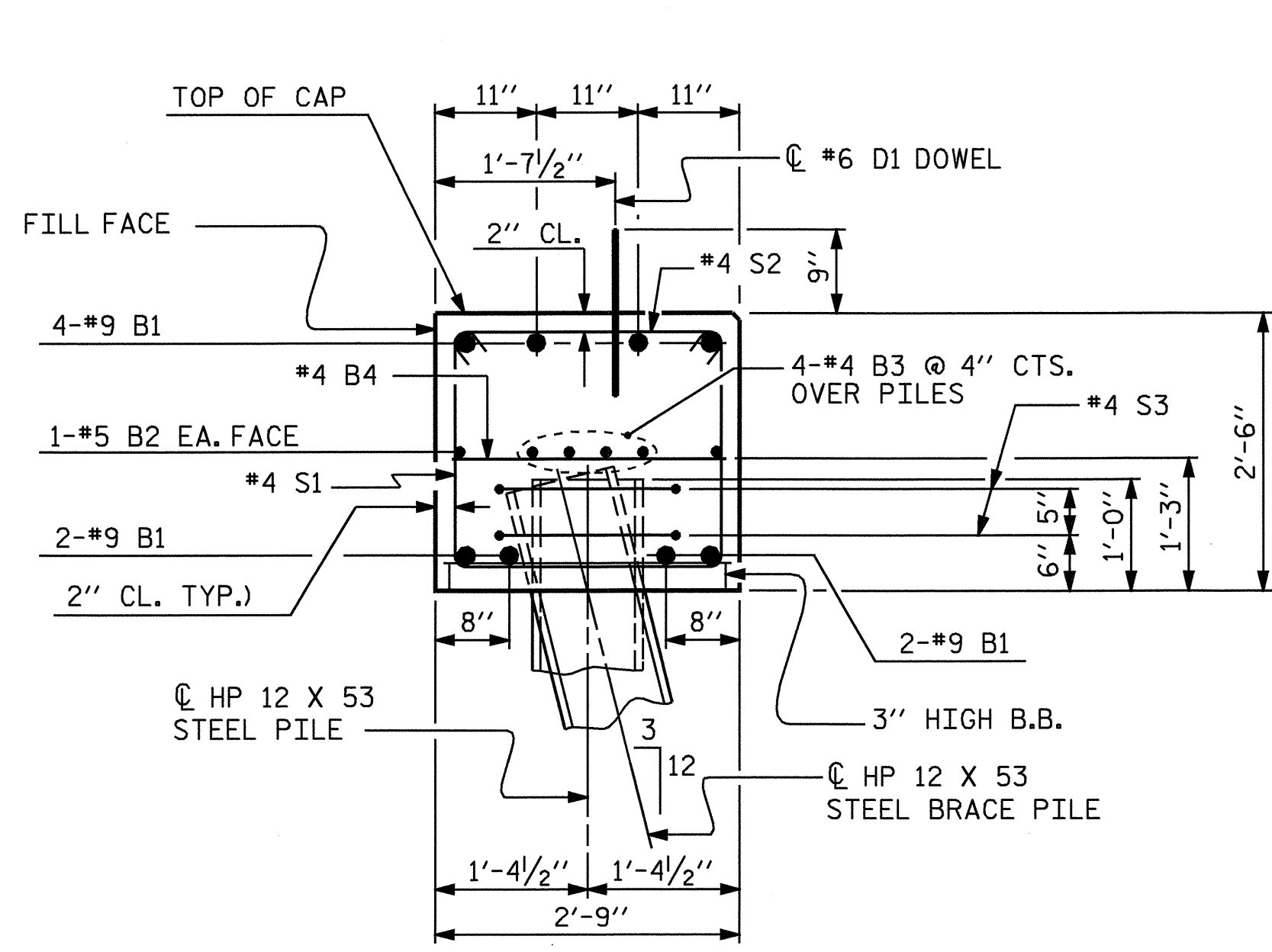
BAR TYPES



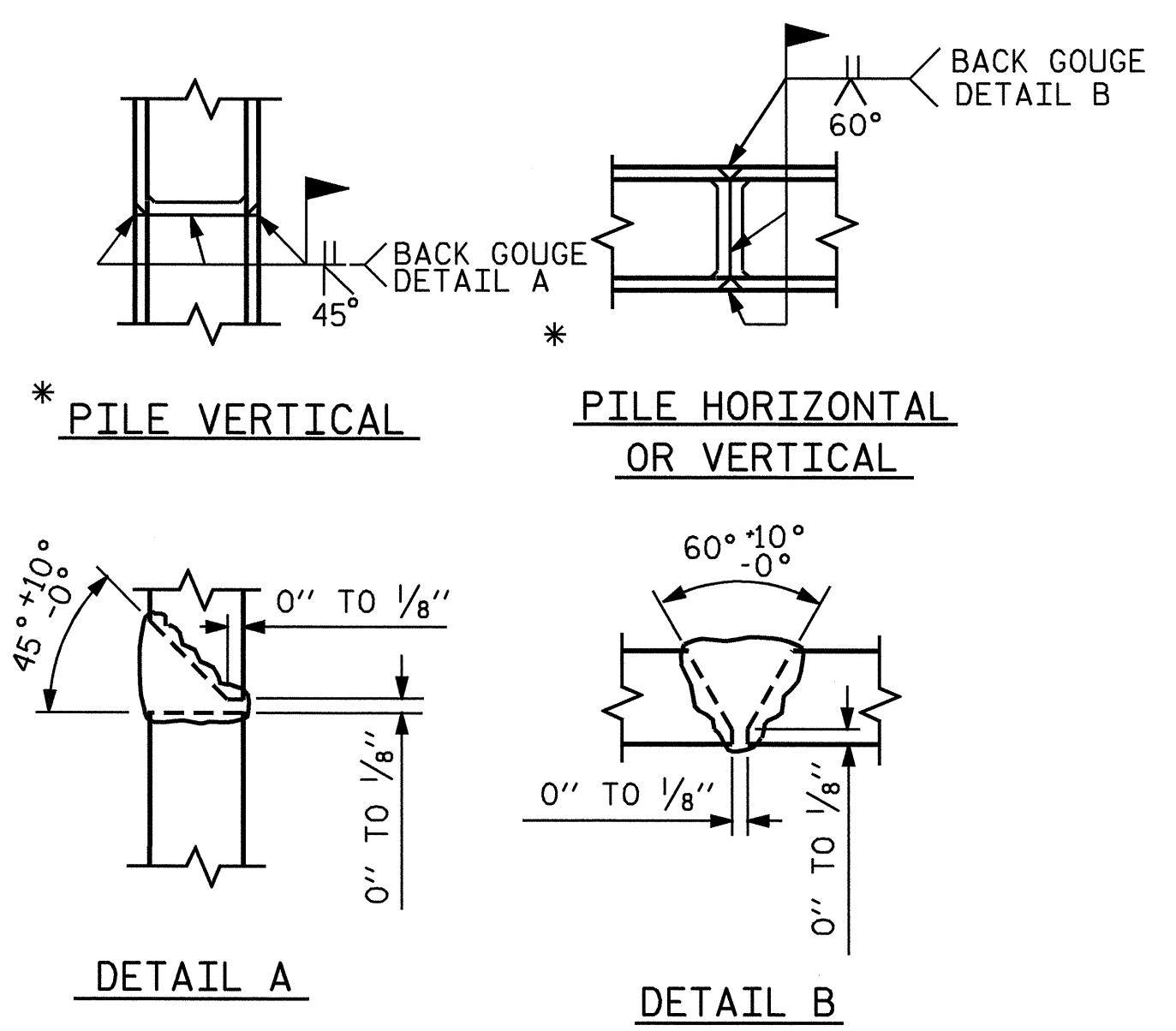
ALL BAR DIMENSIONS ARE OUT TO OUT.

BILL OF MATERIAL

END BENT 2					
BAR NO.	SIZE	TYPE	LENGTH	WEIGHT	
B1	8	9	1	51'-0"	1387
B2	2	5	STR	48'-6"	101
B3	8	4	STR	25'-6"	136
B4	12	4	STR	2'-5"	19
D1	28	6	STR	1'-6"	63
H1	5	4	7	7'-6"	25
H2	5	4	7	7'-5"	25
H3	6	4	4	8'-2"	33
H4	6	4	4	8'-3"	33
H5	10	4	STR	2'-7"	17
S1	44	4	3	7'-5"	218
S2	44	4	2	3'-2"	93
S3	16	4	5	6'-6"	69
S4	4	4	6	3'-5"	9
V1	20	4	STR	4'-2"	56
V2	22	4	STR	4'-5"	65
REINFORCING STEEL					2349 LBS
CLASS A CONCRETE BREAKDOWN :					
POUR #1 (CAP & LOWER WINGS)					13.6 C.Y.
POUR #2 (UPPER WINGS)					1.5 C.Y.
POUR #3 (LATERAL GUIDES)					0.1 C.Y.
TOTAL					15.2 C.Y.
HP 12 X 53 STEEL PILES					
NO. 8					280 LIN. FEET



SECTION THRU CAP



PILE SPLICE DETAILS

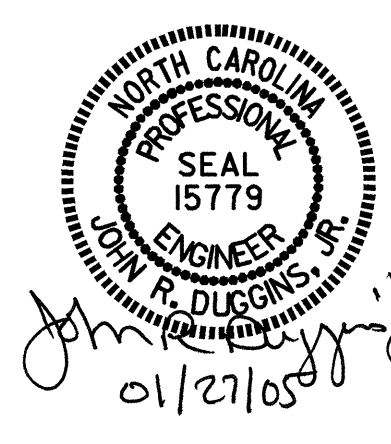
* POSITION OF PILE DURING WELDING.

PROJECT NO. B-3887
 PENDER COUNTY
 STATION: 15+64.50 -L-

SHEET 3 OF 3

STATE OF NORTH CAROLINA
 DEPARTMENT OF TRANSPORTATION
 RALEIGH

SUBSTRUCTURE
 END BENT 2



DRAWN BY: M. POOLE DATE: 3/2004
 CHECKED BY: J. LAMBERT DATE: 4/2004

REVISIONS						SHEET NO.
NO.	BY:	DATE:	NO.	BY:	DATE:	S-19
1			3			TOTAL SHEETS
2			4			23