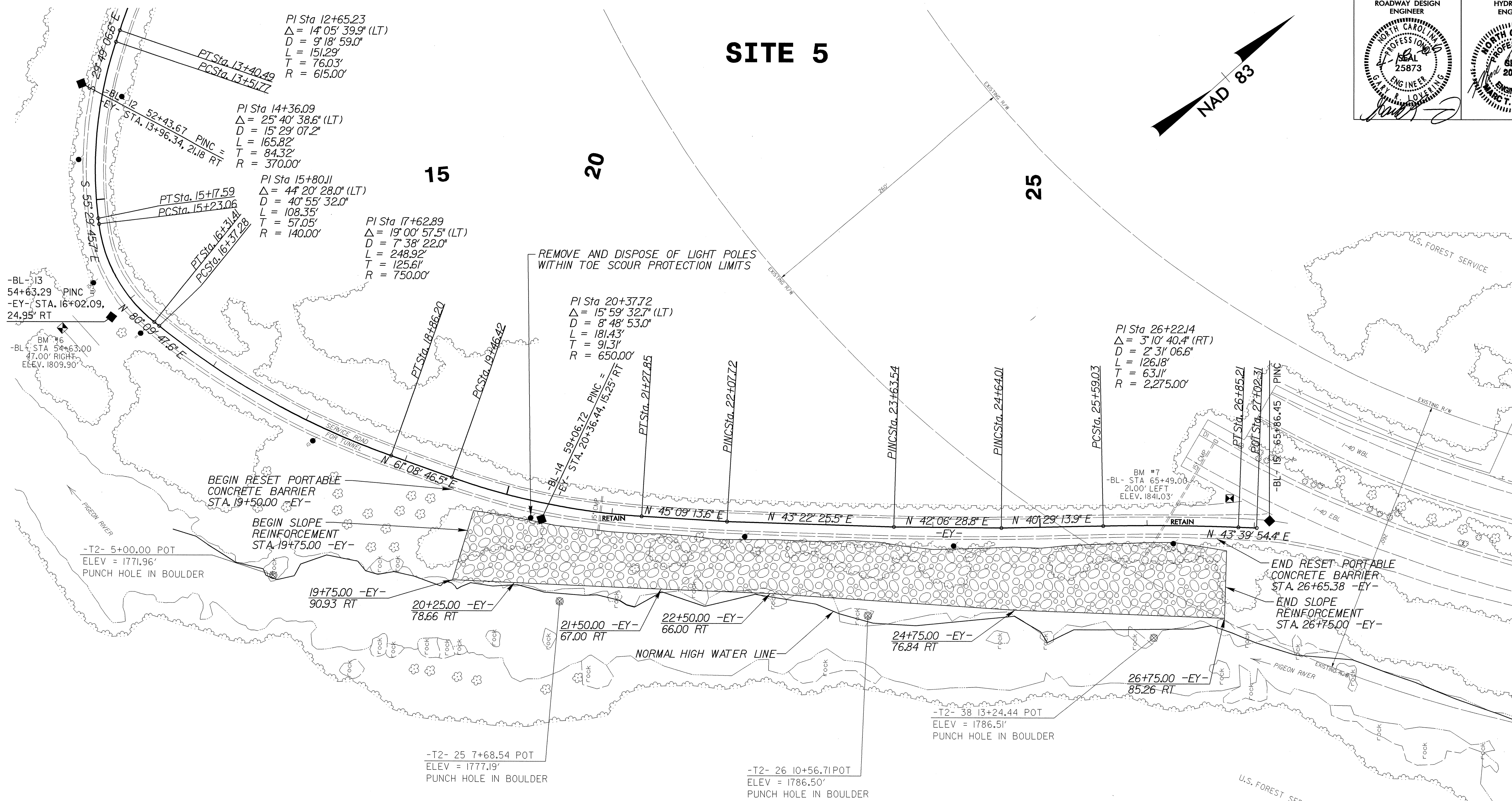
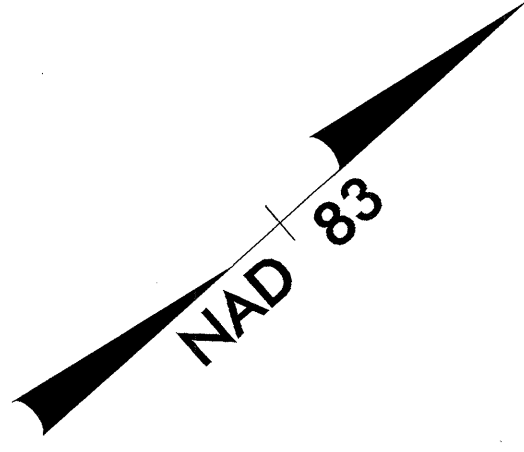


PROJECT REFERENCE NO. 1121044027		SHEET NO. 5	
RW SHEET NO.			
ROADWAY DESIGN ENGINEER		HYDRAULICS ENGINEER	

SITE 5

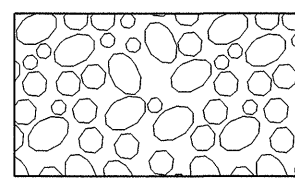


DATUM DESCRIPTION

THE LOCALIZED COORDINATE SYSTEM DEVELOPED FOR THIS PROJECT IS BASED ON NAD 83/95 STATE PLANE COORDINATES FOR NCCOT MONUMENT "140 GPS-102" WITH A NORTHING OF 754827.074 (FT), EASTING OF 797583.192 (FT). THE AVERAGE COMBINED FACTOR USED ON THIS PROJECT (GROUND TO GRID) IS 0.99983155.

THE NC LAMBERT GRID BEARING AND LOCALIZED GROUND DISTANCE FROM "140 GPS-102" TO -EY- STATION 5+00.00 IS S 71 07' 32.56" E 2049.45 (FT).

ALL LINEAR DISTANCES ARE LOCALIZED HORIZONTAL DISTANCES. THE VERTICAL DATUM IS BASED ON NCCOT MONUMENT "140 GPS-102" (ELEV 1744.16 FT.) (NAVD 1988).



PROPOSED TOE SCOUR PROTECTION

XSECS - SEE SHEETS X-26 THRU X-54
 SEE DETAIL SHEETS 2-D & 2-E FOR TOE SCOUR PROTECTION
 SEE SHEET 7 FOR TOE SCOUR ENVELOPE