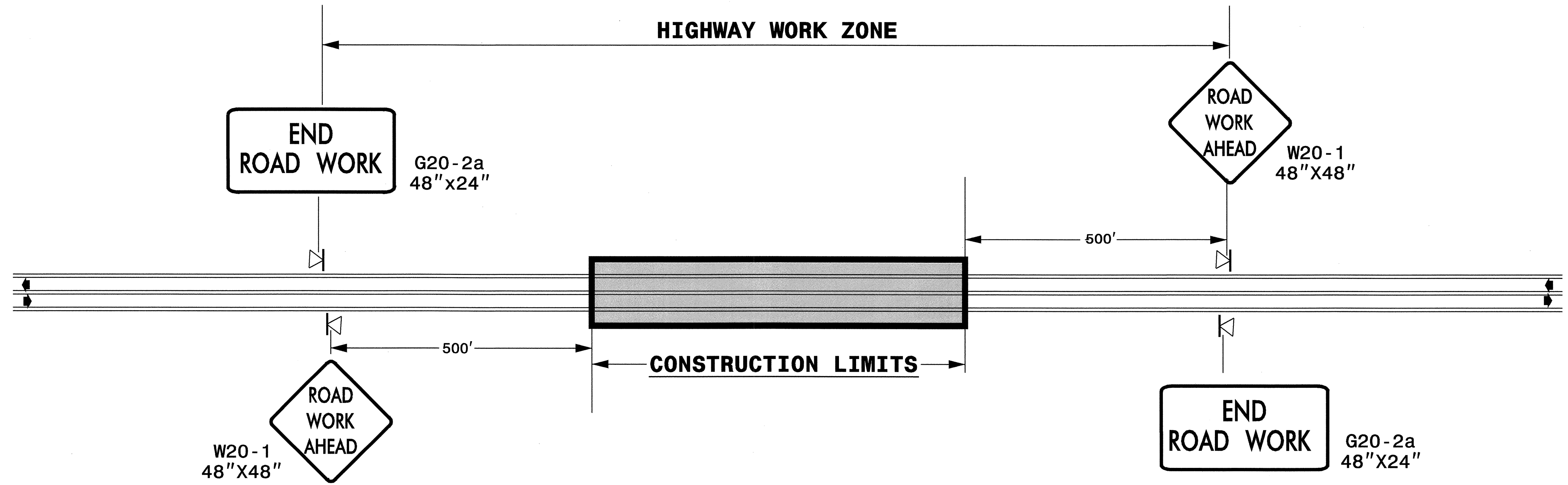


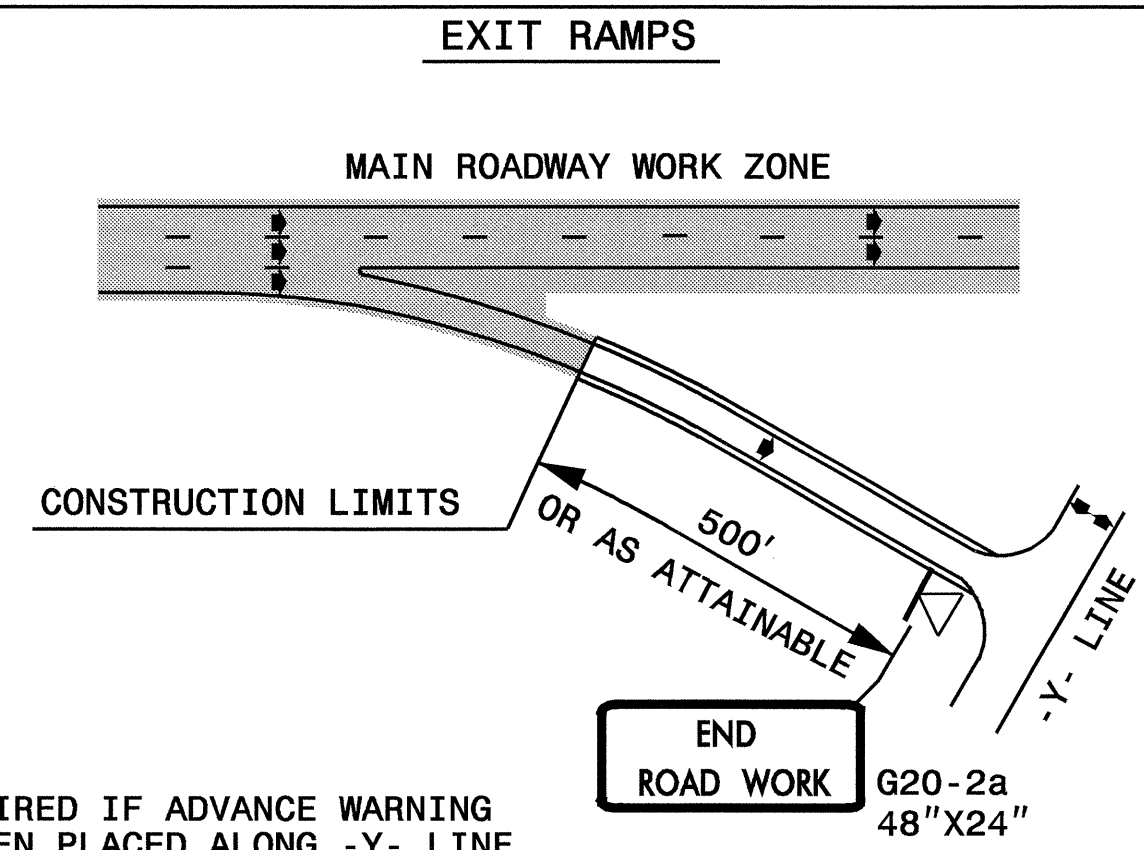
TWO-WAY UNDIVIDED ** (L-LINES)

PROJ. REFERENCE NO.	SHEET NO.
R-4414	TCP-4



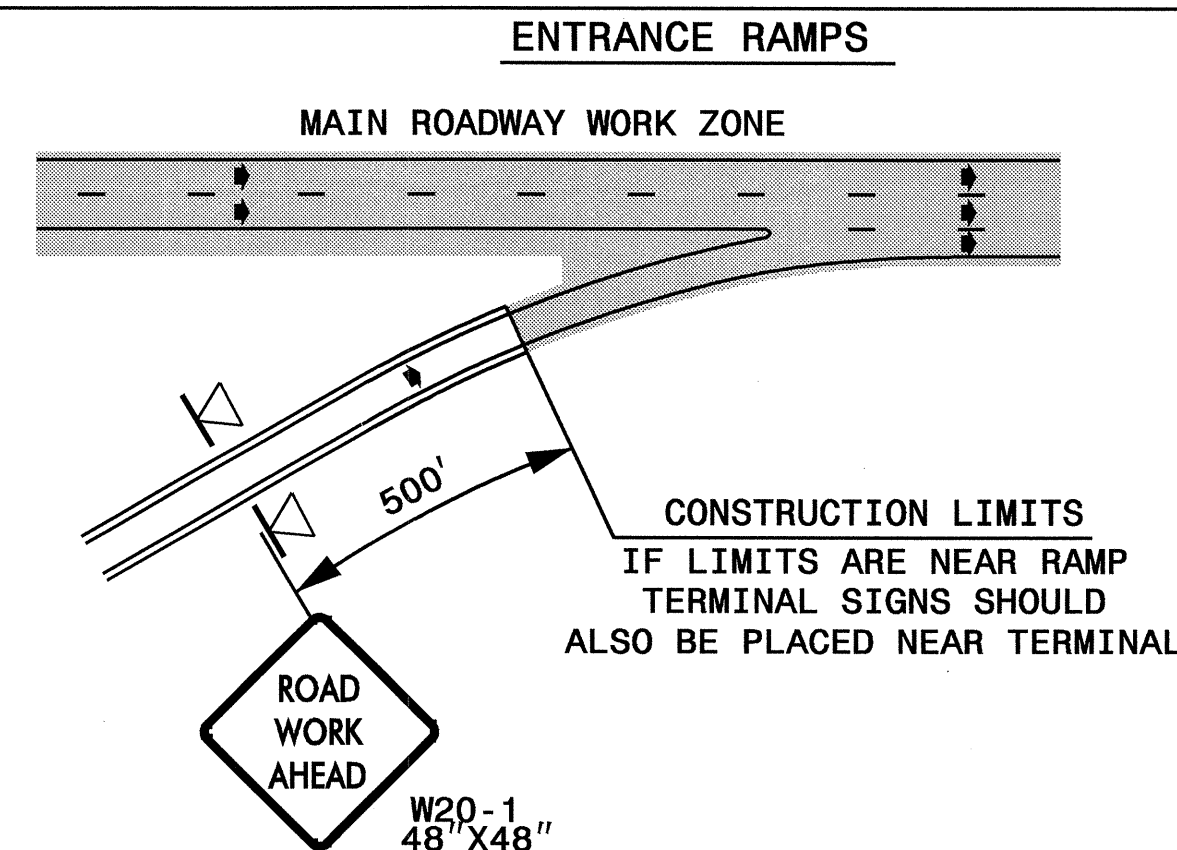
LEGEND	
△	PORTABLE SIGN
→	DIRECTION OF TRAFFIC FLOW

DETAIL B

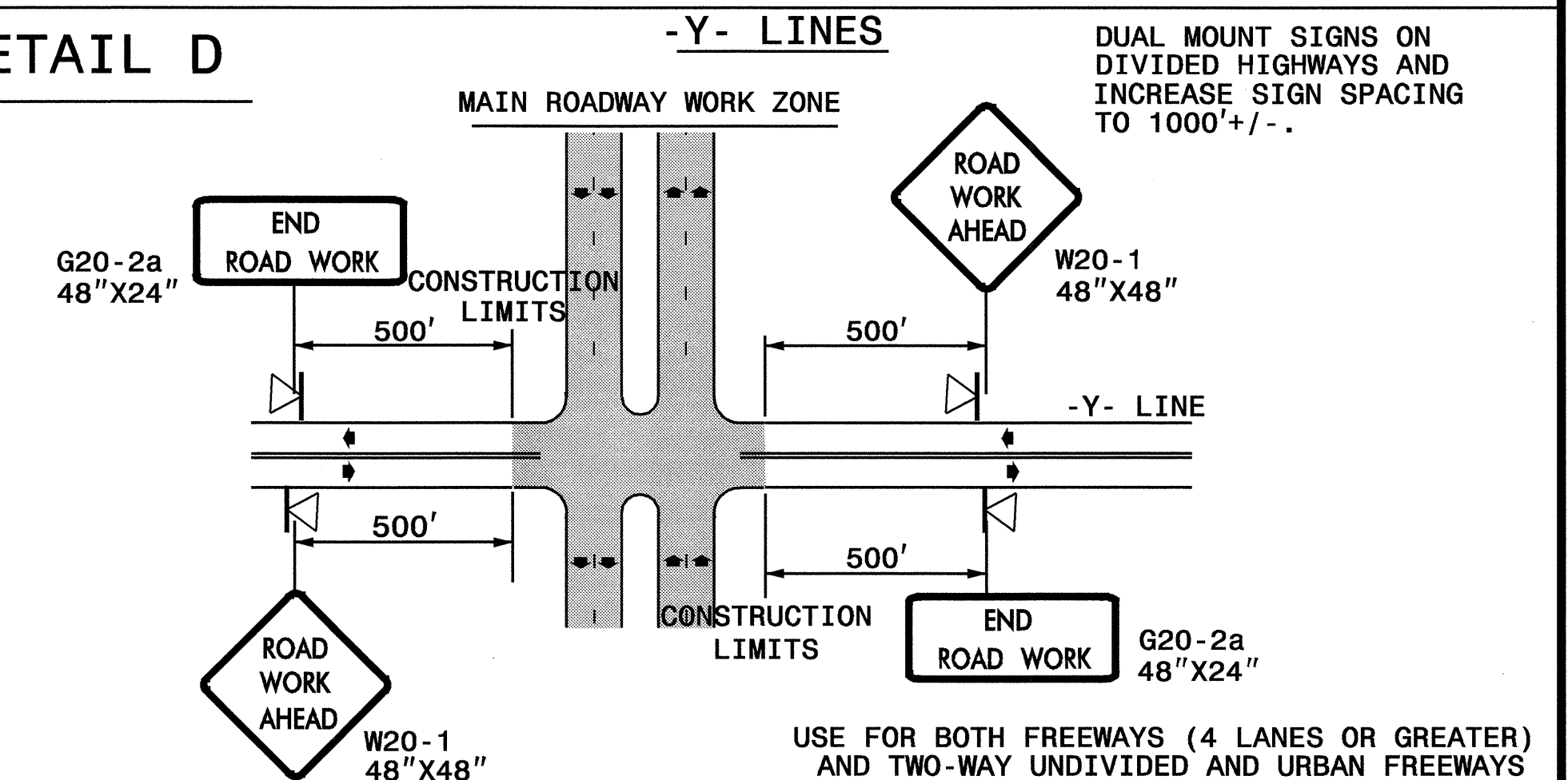


NOTE: SIGN NOT REQUIRED IF ADVANCE WARNING SIGNS HAVE BEEN PLACED ALONG -Y- LINE THAT RAMP INTERSECTS. IF CONSTRUCTION LIMITS ARE AT END OF RAMP, PLACE SIGN AT END OF RAMP.

DETAIL C



DETAIL D



GENERAL NOTES

- USE FLUORESCENT ORANGE SHEETING (TYPE VII OR HIGHER) ON ALL ADVANCED WORK ZONE SIGNS.
- DO NOT INSTALL ADVANCE WARNING SIGNS MORE THAN 3 DAYS PRIOR TO BEGINNING OF WORK.
- SIGNS SHOWN ARE REQUIRED FOR WORK ZONES THAT INVOLVE SHORT-TERM DAILY MAINTENANCE TYPE OPERATIONS. ALL SIGNS ARE PORTABLE MOUNTED.
- ALL SIGN SPACING DIMENSIONS ARE APPROXIMATE, FIELD ADJUST AS NECESSARY OR AS DIRECTED.

NOTES
-SEE SHEET TCP-3 FOR SIGN PLACEMENT ON TANGENT SECTION OF FREEWAY

16-MAR-2005 08:55 \\nets-ccfs01\vr-4414\tcp-4\top4.dgn sedlton AT TETC22403

APPROVED: <i>[Signature]</i> DATE: 3/17/05	ADVANCE WORK ZONE WARNING SIGNS	
	SCALE: NONE	
	DATE: 3/8/05	
	DWG. BY: SPC	
	DESIGN BY: SPC	
REVIEWED BY: JLP	REVISIONS	