

8/17/99

PROJECT REFERENCE NO.	SHEET NO.
B-3714	UC-2
DESIGNED BY: BWB	
DRAWN BY: BWB	
CHECKED BY: CDB	
APPROVED BY: CDB	
REVISD:	
NORTH CAROLINA DEPARTMENT OF TRANSPORTATION	
DESIGN SERVICES UNIT PHONE: (919)250-4128 FAX: (919)250-4119	
UTILITY CONSTRUCTION PLANS ONLY	

# UTILITY CONSTRUCTION

**PLANS PREPARED BY:**  
**RUMMEL KLEPPER & KAHL, LLP**  
*consulting engineers*  
 800 FARMWOOD PLACE SUITE 105  
 RALEIGH, NORTH CAROLINA 27609-3960  
**FOR**  
**STATE OF NORTH CAROLINA**  
**DIVISION OF HIGHWAYS**

PI Sta 10+46.91 $\Delta = 7^{\circ} 40' 09.0''$ (LT) $D = 2^{\circ} 30' 00.0''$ $L = 306.77'$ $T = 153.61'$ $R = 2,291.83'$ $Se = 0.04$ SEE PLANS	PI Sta 13+53.68 $\Delta = 7^{\circ} 40' 09.0''$ (RT) $D = 2^{\circ} 30' 00.0''$ $L = 306.77'$ $T = 153.61'$ $R = 2,291.83'$ $Se = 0.04$ SEE PLANS
--	--

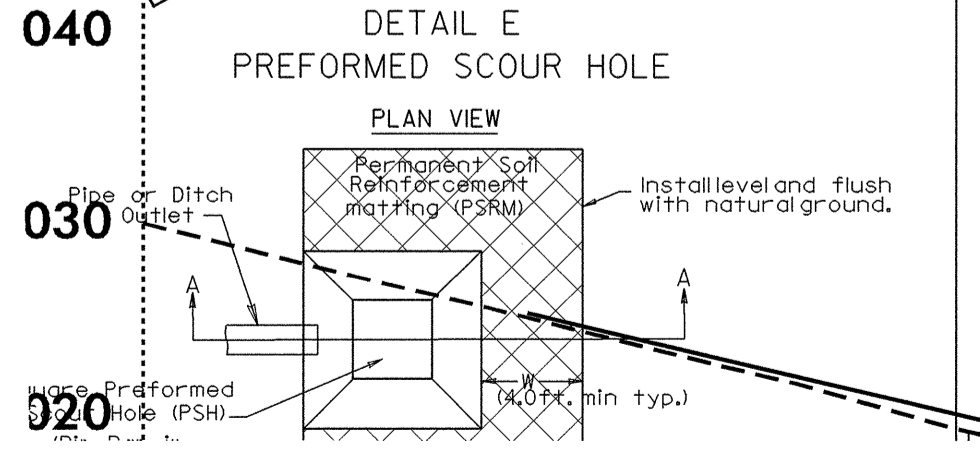
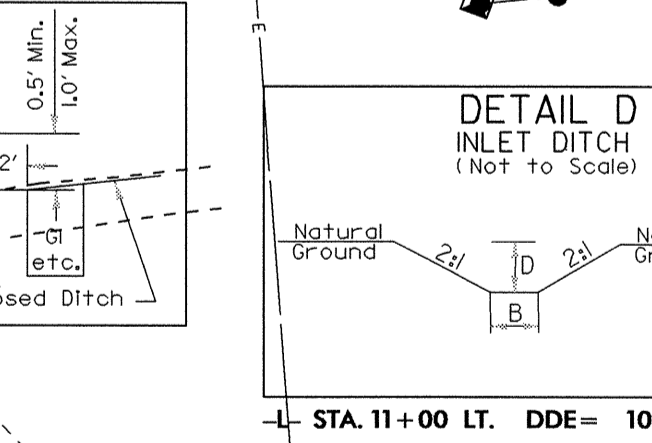
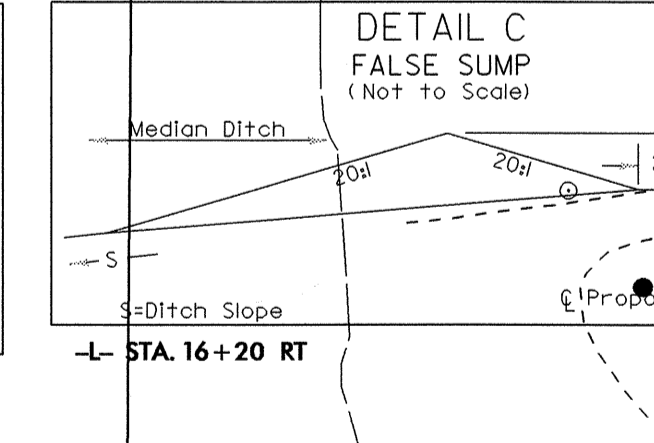
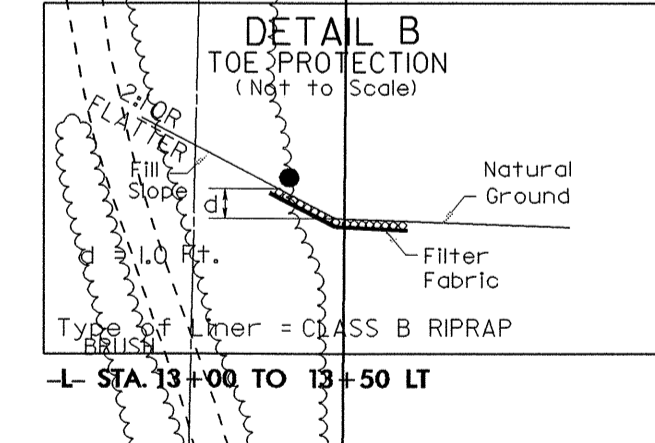
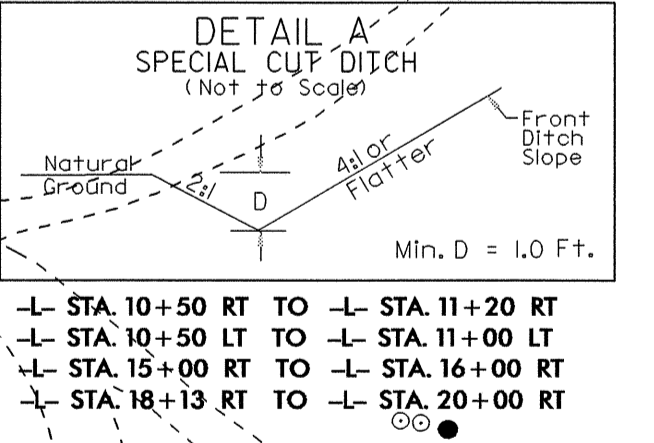
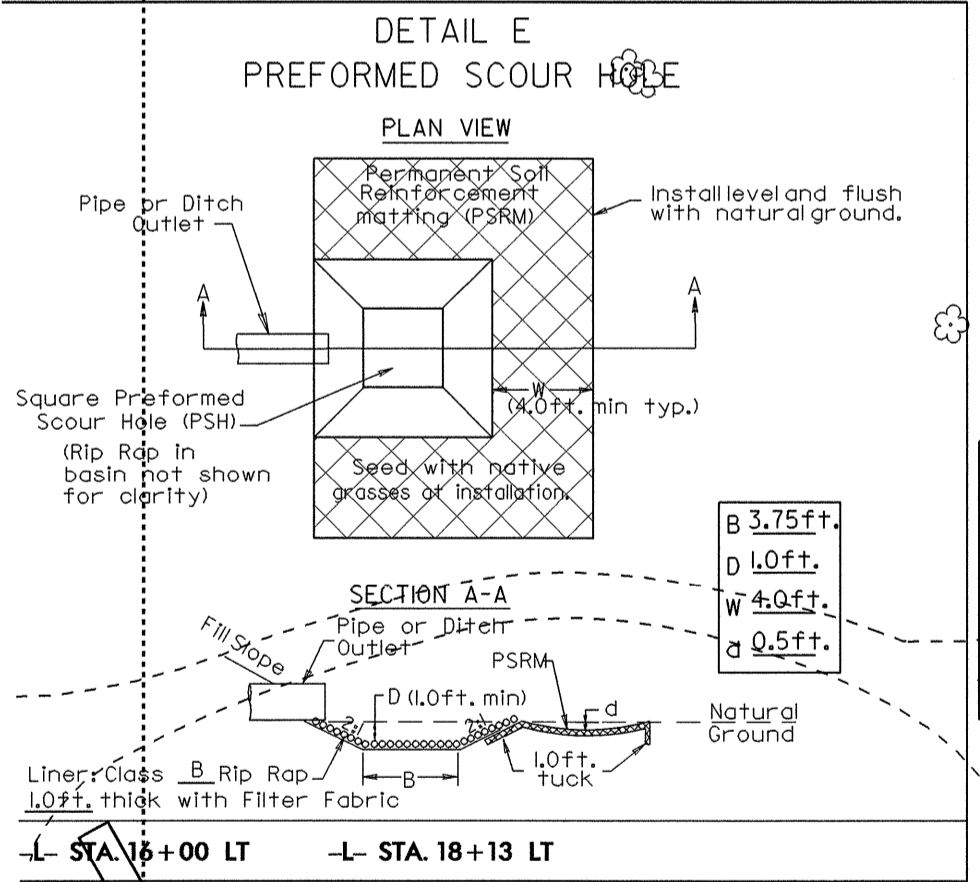
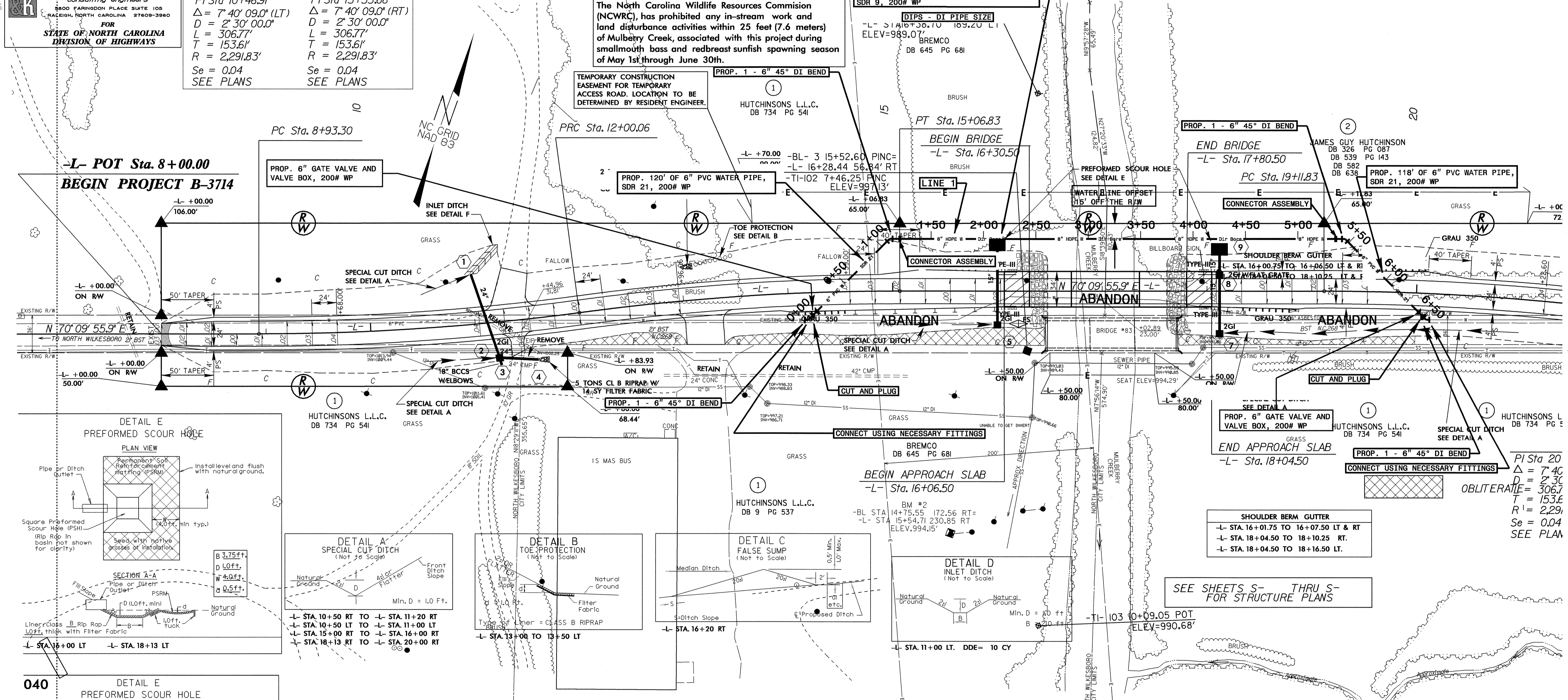
SEE PROFILE FOR LINE 1 ON SHEET UC-3

THE 6" PVC WATER LINE IS OWNED BY BLUE RIDGE WATER ASSOCIATION  
 THE 12" DI SEWER LINE IS OWNED BY TOWN OF NORTH WILKESBORO

### Environmental Commitments

The North Carolina Wildlife Resources Commission (NCWRC), has prohibited any in-stream work and land disturbance activities within 25 feet (7.6 meters) of Mulberry Creek, associated with this project during smallmouth bass and redbreast sunfish spawning season of May 1st through June 30th.

TEMPORARY CONSTRUCTION EASEMENT FOR TEMPORARY ACCESS ROAD. LOCATION TO BE DETERMINED BY RESIDENT ENGINEER.



**BEG SP. CUT DITCH RT.**  
 -L- STA 10+50.00  
 EL. 1012.410

**END SP. CUT DITCH RT.**  
 -L- STA 11+20.00  
 EL. 1008.80

PI = 13+35.00  
 EL = 1000.94'  
 K = 100  
 VC = 430'  
 DS = 50 mph

1 STA -L- 11+00 LT D.A. 16.00 AC C= 0.30 Q10= 7.050 CFS OPEN RIM = NA FT INV IN= 1006.00 FT INV OUT= 1005.30	3 STA -L- 11+20 RT D.A. 0.80 AC C= 0.40 Q10= 0.444 CFS OPEN RIM = 1008.80 FT INV IN= 1005.30 INV OUT= 1005.30	3A STA -L- 11+20 RT D.A. 5.320 AC C= 0.40 Q10= 11.055 CFS OPEN RIM = NA FT INV IN= 1007.00 FT INV OUT= 1005.30	4 STA -L- 16+00 RT D.A. 0.490 AC C= 0.80 Q10= 2.46 CFS 2GI RIM = 997.08 FT INV OUT= 994.33
--	---	--	---

01-DEC-2004 07:13 U:\Projects\B3714\UC-2.dgn  
 01-DEC-2004 07:13 U:\Projects\B3714\UC-2.dgn  
 01-DEC-2004 07:13 U:\Projects\B3714\UC-2.dgn