

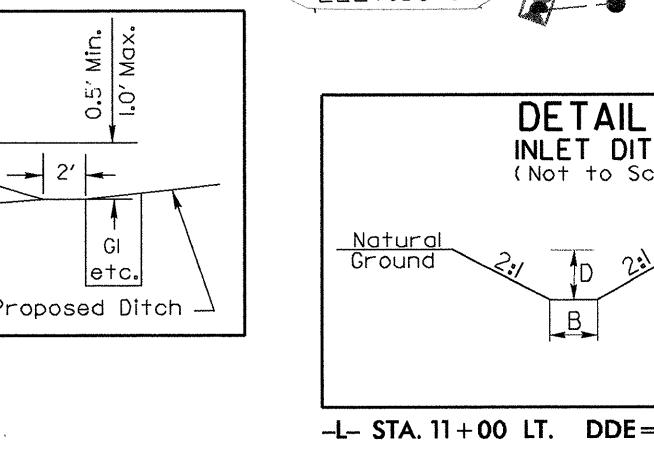
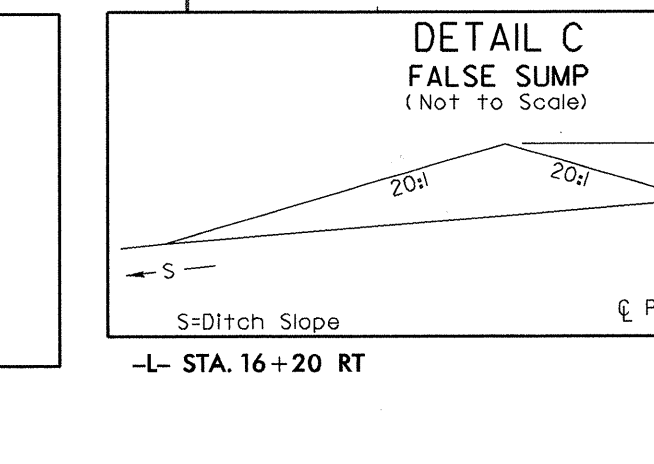
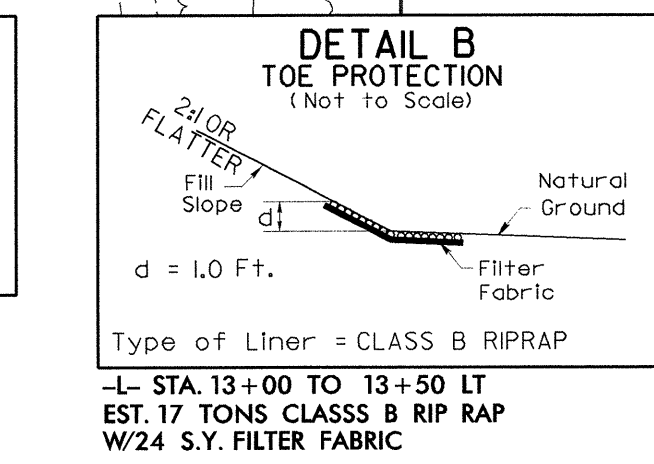
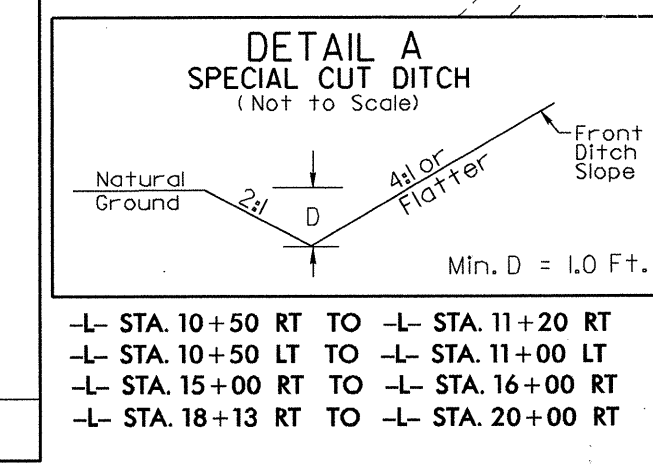
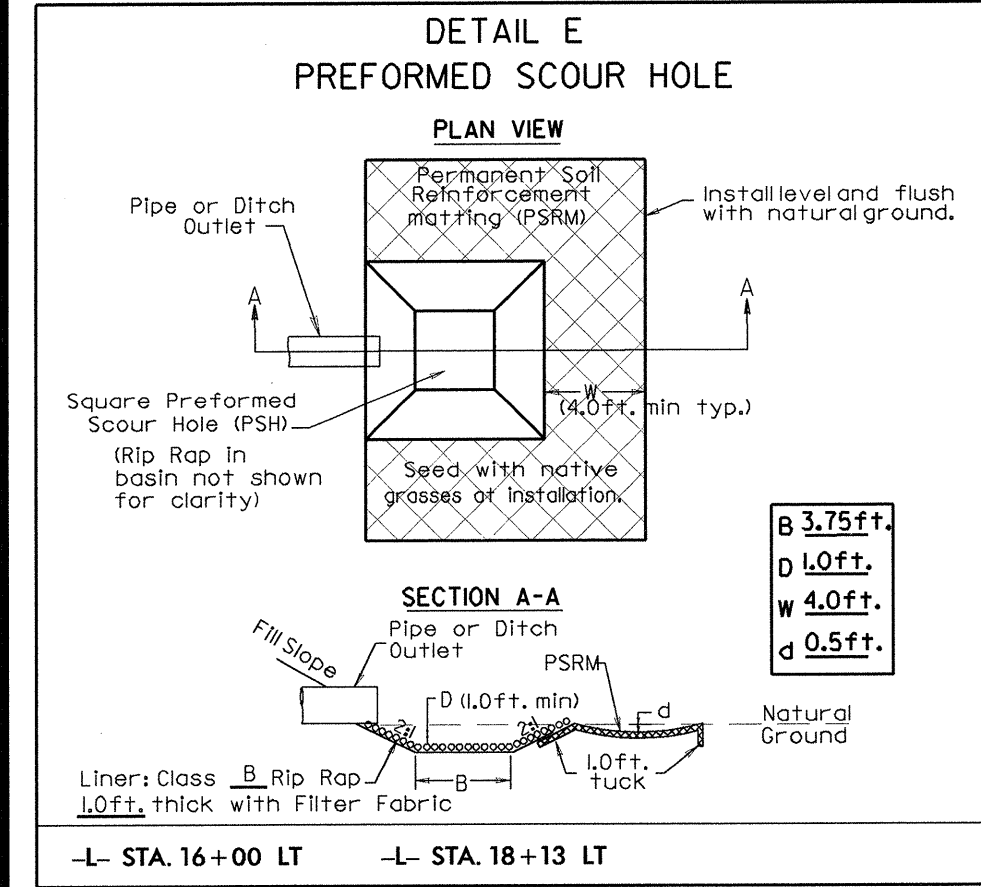
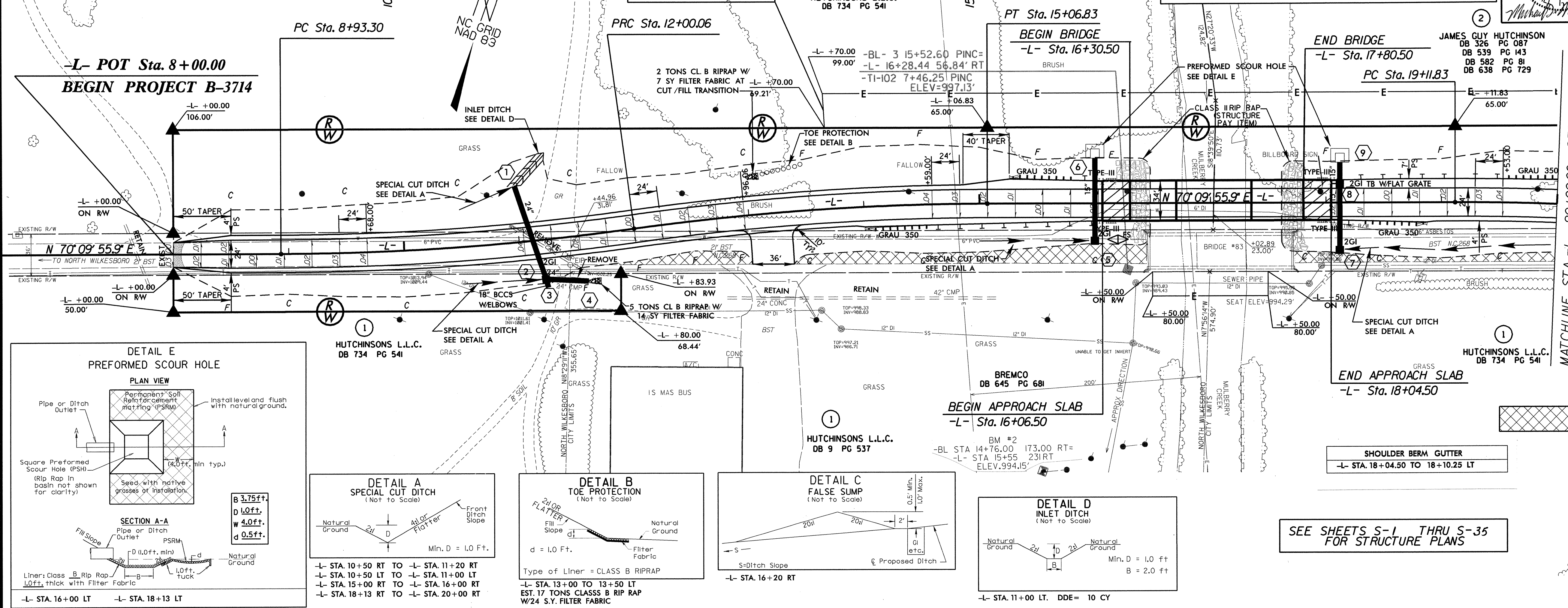
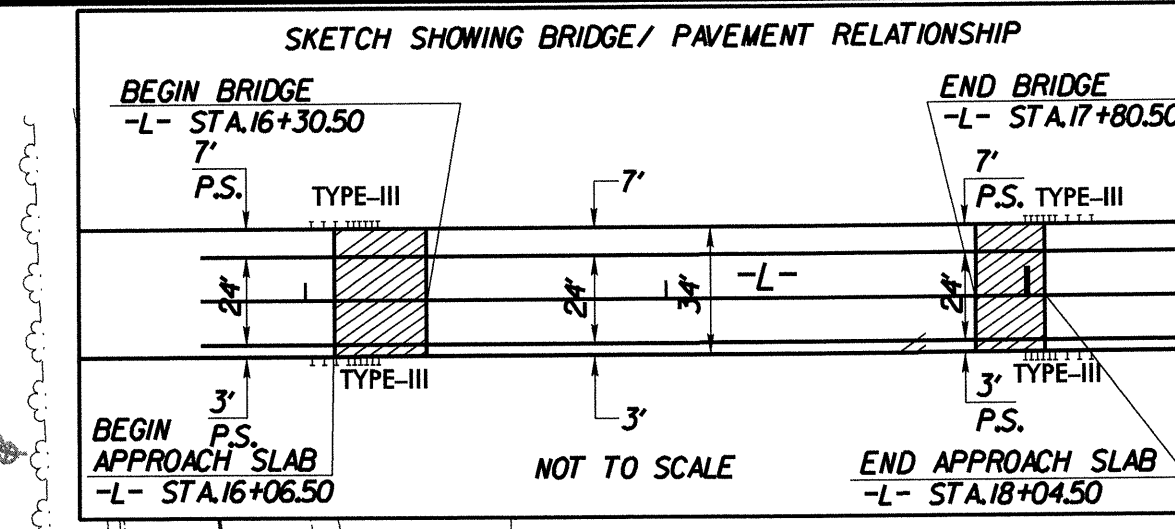
PLANS PREPARED BY:
RUMMEL KLEPPER & KAHL, LLP
consulting engineers
 8600 FARMWOOD PLACE SUITE 105
 RALEIGH, NORTH CAROLINA 27609-3950
 FOR
STATE OF NORTH CAROLINA
 DIVISION OF HIGHWAYS

PI Sta 10+46.91 PI Sta 13+53.68
 $\Delta = 7^{\circ} 40' 09.0''$ (LT) $\Delta = 7^{\circ} 40' 09.0''$ (RT)
 $D = 2^{\circ} 30' 00.0''$ $D = 2^{\circ} 30' 00.0''$
 $L = 306.77'$ $L = 306.77'$
 $T = 153.61'$ $T = 153.61'$
 $R = 2,291.83'$ $R = 2,291.83'$
 $Se = 0.04$ $Se = 0.04$
 SEE PLANS SEE PLANS

Environmental Commitments

The North Carolina Wildlife Resources Commission (NCWRC), has prohibited any in-stream work and land disturbance activities within 25 feet (7.6 meters) of Mulberry Creek, associated with this project during smallmouth bass and redbreast sunfish spawning season of May 1st through June 30th.

PROJECT REFERENCE NO. B-3714	SHEET NO. 4
ROADWAY DESIGN ENGINEER RW SHEET NO.	HYDRAULICS ENGINEER

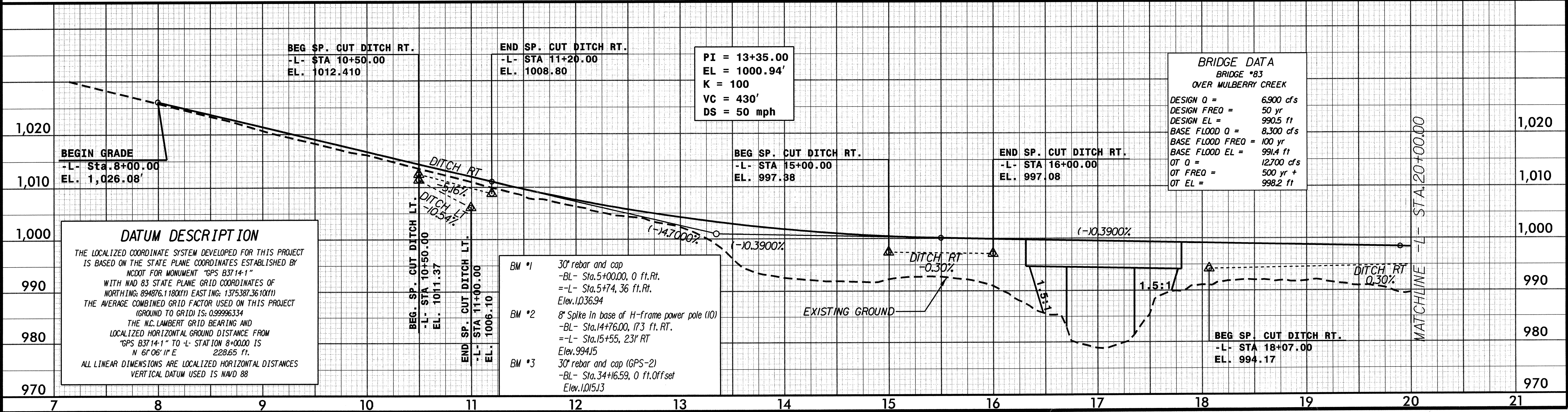


SEE SHEETS S-1 THRU S-35 FOR STRUCTURE PLANS

MATCHLINE STA.-L- 20+00.00 SEE SHEET 5

REMOVE & OBLITERATE

SHOULDER BERM GUTTER
 -L- STA. 18+04.50 TO 18+10.25 LT



REVISIONS

5/17/02

12/1/2004
 R:\Roadway\Proj\B3714-RDY_PSH_04.dgn