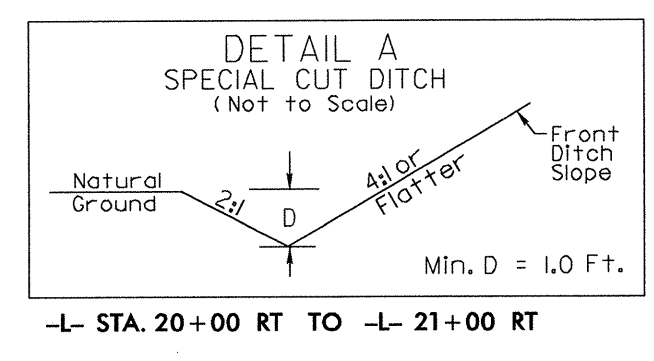
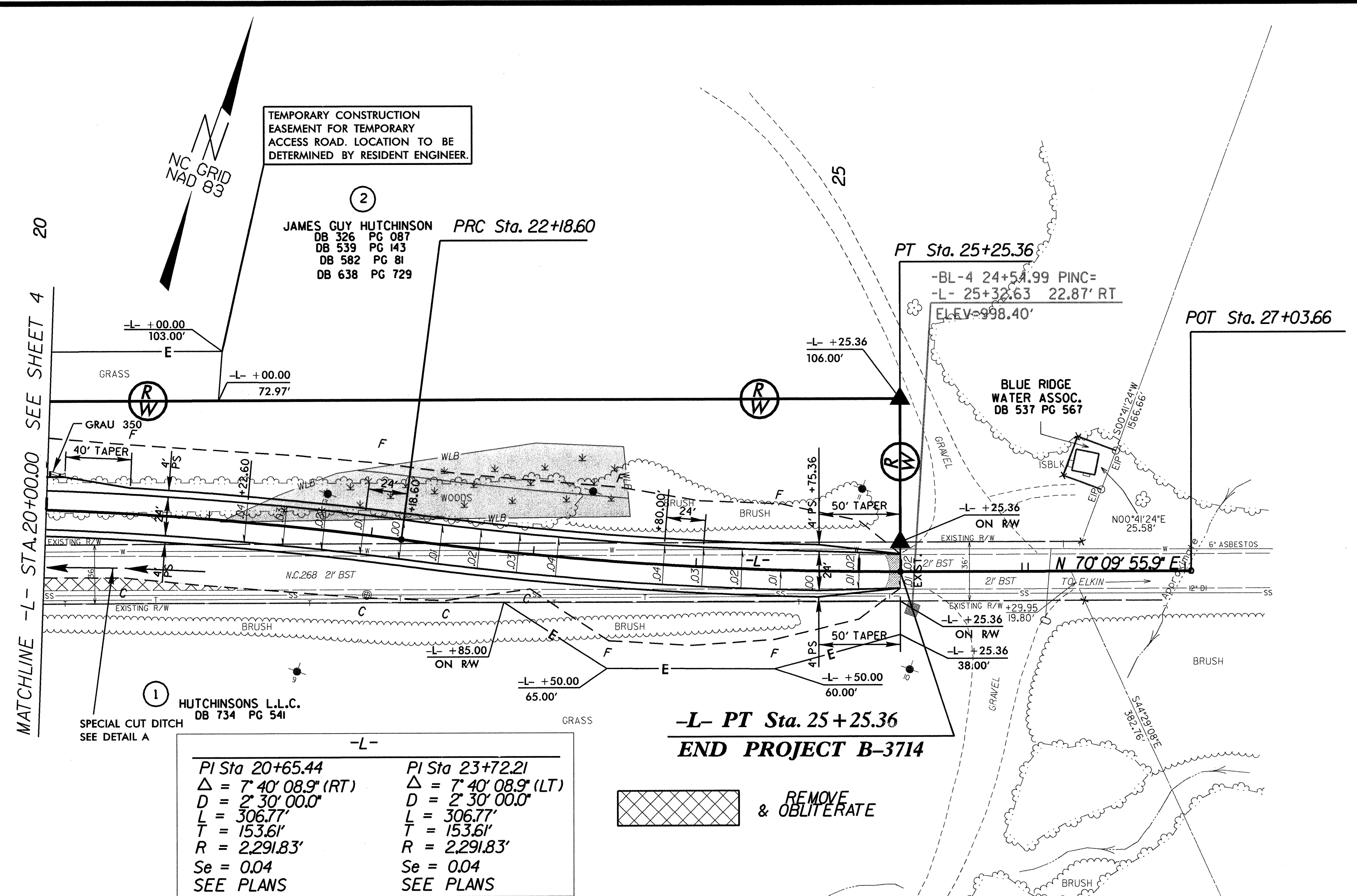
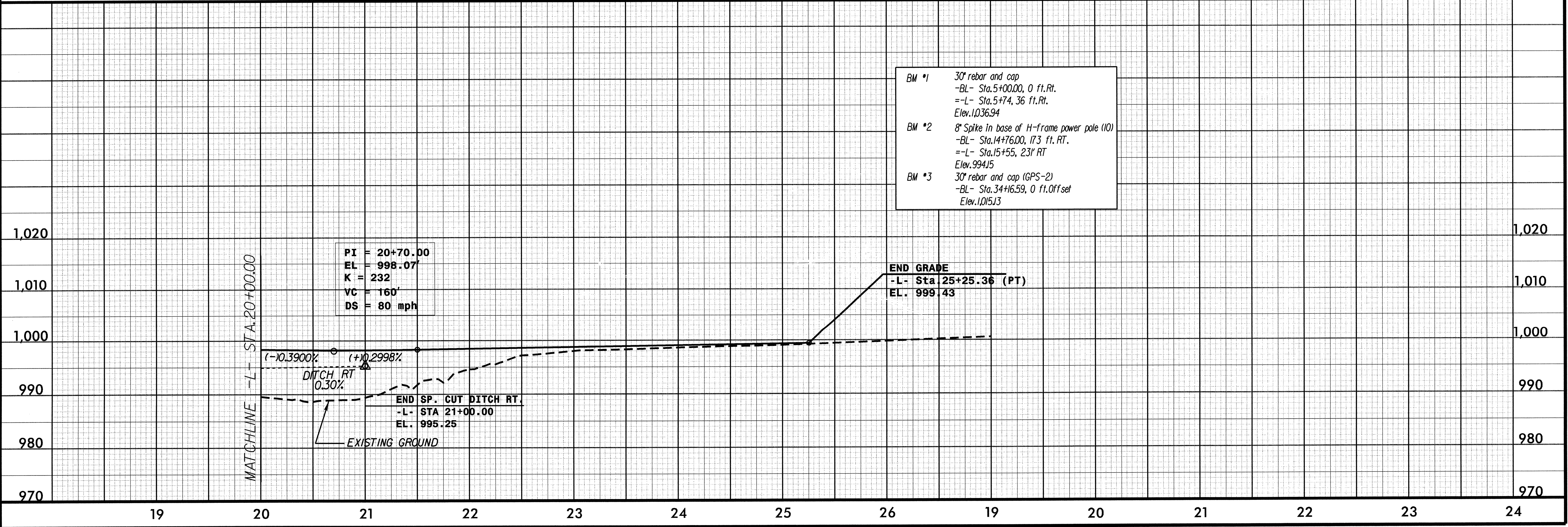


PLANS PREPARED BY:
RUMMEL KLEPPER & KAHL, LLP
consulting engineers
 5800 FARMINGTON PLACE SUITE 105
 RALEIGH, NORTH CAROLINA 27609-3960
 FOR
STATE OF NORTH CAROLINA
DIVISION OF HIGHWAYS



-L-	
PI Sta 20+65.44	PI Sta 23+72.21
$\Delta = 7' 40' 08.9''$ (RT)	$\Delta = 7' 40' 08.9''$ (LT)
$D = 2' 30' 00.0''$	$D = 2' 30' 00.0''$
$L = 306.77'$	$L = 306.77'$
$T = 153.61'$	$T = 153.61'$
$R = 2,291.83'$	$R = 2,291.83'$
$Se = 0.04$	$Se = 0.04$
SEE PLANS	SEE PLANS

- BM #1 30" rebar and cap
 -BL- Sta. 5+00.00, 0 ft. Rt.
 =-L- Sta. 5+74, 36 ft. Rt.
 Elev. 1,036.94
- BM #2 8" Spike in base of H-frame power pole (10)
 -BL- Sta. 14+76.00, 173 ft. Rt.
 =-L- Sta. 15+55, 231' RT
 Elev. 994.15
- BM #3 30" rebar and cap (GPS-2)
 -BL- Sta. 34+16.59, 0 ft. Offset
 Elev. 1,015.13



REVISIONS

12/17/2004
 C:\Roadway\proj\163714_rdy_psh_05.dgn